

W-Series Combines

Experience the future



Experience the future of combines

Whatever the crop, whatever the conditions, John Deere has a combine to match. Our new line-up offers you all the quality and reliability you expect from John Deere – plus the advanced technologies and premium comfort you need to optimise your harvesting performance.

Harvesting half the world's grain and still growing

100 years of experience in harvesting technology. Building twice as many combines than the closest competition – worldwide. And harvesting half the world's grain. That's how we define leadership in the harvesting business!

Choosing John Deere means teaming up with the most experienced and reliable partner in the industry. At John Deere we take great pride in our legacy of one century of harvesting competence. A history that is reinforced by building more than twice as many combines as our closest competitors – around the globe.

What we are most proud of is our commitment to innovation and our relentless pursuit of meeting your needs. The result? With the introduction of our new range of combines we deliver to you the ultimate in small grain harvesting technology. Experience the future!



"I will never put my name on a product that doesn't have in it the best that is in me." – John Deere

Milestones

- 1911** John Deere starts building binders in East Moline (USA).
- 1916** Lanz acquires the Wery Implement Company in Zweibrücken (Germany).
- 1929** John Deere starts production of the 12A combine.
- 1951** John Deere introduces the industry's first Quality Book – a set of rigorous guidelines that take design and build quality to a new level.
- 1992** John Deere's legendary CTS is the first hybrid combine in the world. Other manufacturers follow ... but only after our patents expire.
- 2000** John Deere introduces STS technology.
- 2004** The first i-Series combines add brains to brawn.
- 2007** The new T-Series takes productivity to the next level.
- 2011** John Deere unveils the new combine lineup, featuring the new W, T and the all-new S-Series.



Content

A hundred years of quality and Innovation.....	2 – 3
The new W-Series	4 – 5
Deluxe cab	6 – 9
600R and Premium Flow headers	10 – 11
600C Corn header and special headers	12 – 13
Feederhouse	14 – 15
W-Series threshing module	16 – 17
Separation and grain handling	18 – 19
Residue management	20 – 21
PowerTech PSX engine and HillMaster.....	22 – 23
Transmissions and tyres	24 – 25
JDLink telematics.....	26 – 27
Guidance, documentation and displays	28 – 29
Cutaway and specifications	30 – 31

Think global, act local: With seven manufacturing plants worldwide, John Deere produces machines that adapt our global experience to suit local requirements perfectly.

The W Series. “Power through the harvest with ease.”

Do you need a reliable and easy to maintain combine that features high power and fuel efficiency with high capacity in a wide range of crops and conditions? The highly efficient W-Series has proven walker technology that’s gentle on material and easy on fuel. Plus a spacious new cab that keeps operators fresh and focused all day long.

With powerful i-Solutions and our unique “diesel only” solution for Stage III B compliance, the new W-Series combines will help you harvest faster and more efficiently than ever before. And because they’re from John Deere, the quality of the combine is every bit as good as the quality of the straw and grain you harvest.





JOHN DEERE

Room with a view



The spacious new Deluxe Cab keeps operators alert, relaxed and productive – no matter how long the job takes or how tough the going gets.

Visibility is excellent too. With tinted safety glass around the cab, you'll get a clear view to the front and sides of your machine. The integrated video functionality in the GreenStar 3 display allows a perfect view to the rear of the combine, in the grain tank or on the unloading auger – providing excellent, customizable views, when having a camera installed.

Slimline cornerposts

See more of the fields outside. The new design provides an almost uninterrupted view to your harvesting operation.

Tilt-and-telescope steering column

Adjusts to fit your operators in seconds.

Comfortable air suspension seat

4-way adjustable air suspension, including lumbar adjustment for just the right amount of back support. Keeps you relaxed and focused all day long.

Roomy instructor seat

Dedicated training seat flips up and converts to a field office with space for a laptop.





The air suspension seat offers outstanding comfort all day long. All the controls are logical, ergonomic and easy to understand. The 'soft touch' switches make it easier than ever to fine-tune combine performance.



Best view to your yield
With the huge and perfectly positioned window to the grain tank, your ability to check the harvest result can't be better.



A/C comfort
The new air conditioning helps operators keep cool even when things get hot. Controls are easy to use and reach.



Sunshades
Together with the tinted safety glass we fit throughout, these generous sunshades prevent dazzle, fatigue and errors.



Visibility at unknown levels
provides the operator best comfort and full glance to keep the harvest under control. The ultimate visibility comes from the new shape and design of cab corner posts and increased glass area.

Your benefit

If you've ever used a John Deere tractor, sprayer or combine before, you'll be ready to go in moments. W-Series combines are using the same logical layout, same controls ... and the same great ergonomics. And the quality of our cab and controls are all what you have come to expect from John Deere.

Take command

With a CommandTouch armrest, a GreenStar 3 CommandCenter armrest display and digital corner post display, the W-Series provides effortless control over all operations.

Master control lever

The master control lever fits your hand perfectly to give you remarkably smooth hydrostatic speed control. It also controls feederhouse raise/lower, reel raise/lower, reel fore/aft, return-to cut mode, emergency stop, and optional active stubble height and float pressure functions. In addition, the new AutoTrac activation button keeps you harvesting in a straight line.

Header resume switches

Button 1: return to preselected header height for long stubble crops.

Button 2: maintain a preset stubble height in standing cereals, for example, using ground contact of the mechanical sensors.

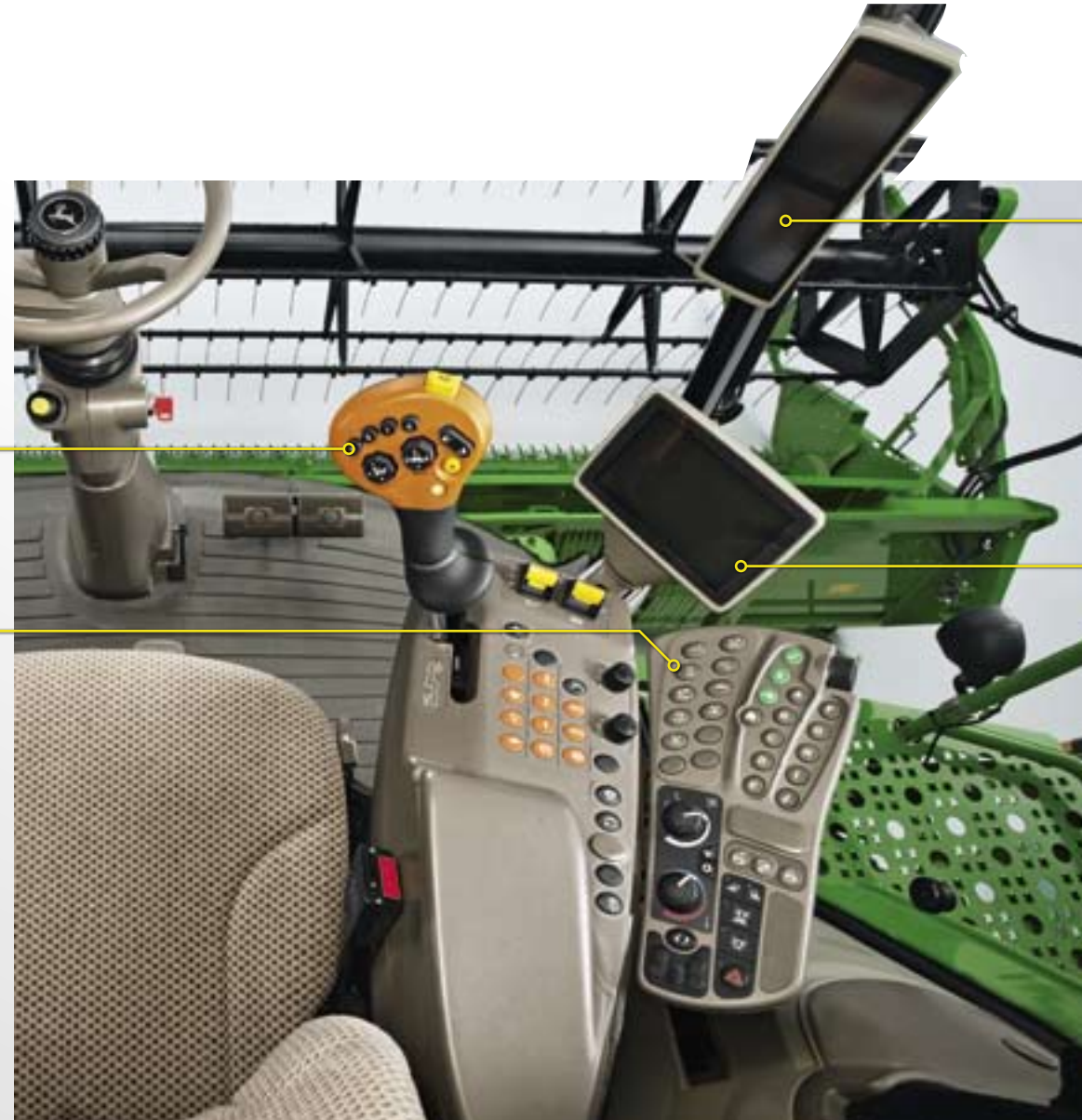
Button 3: maintain a preset header ground pressure for perfect contour following in laid crops.

Button 4: activates AutoTrac for easy to operate straight line harvest.

CommandArm console

The CommandArm console makes it easy and convenient to maximise productivity. Controls are intuitive to understand and fast to locate. All commonly used functions have hot keys located here facilitating intuitive, easy machine adjustment.

- Hot keys for common harvesting adjustments, transmission and HillMaster controls
- Air conditioning controls
- Display control panel
- Light controls



Digital corner post display

The clearly arranged corner post displays are easy to read and give you complete information on your combine's performance.

This crystal clear display provides a quick overview of all primary machine information such as forward speed, engine rpm, losses and warnings. All this information is displayed permanently, avoiding confusion or the need to navigate multiple menus. One addition is the new power meter which shows the percent of available power used. This information is required to continually maximise the performance of your machine.

**GreenStar 3 CommandCenter display**

The GreenStar 3 CommandCenter display puts vital machine and crop information within easy reach, making it simple to make quick adjustments to critical controls. Moreover, it supports AMS features such as AutoTrac. From one panel, you get quick access to:

- Combine setup
- Remote shoe adjust
- ACA (automatic combine adjust)
- HarvestMonitor
- HarvestSmart (automatic feedrate control)
- AutoTrac
- AutoTrac RowSense
- Warning alarms
- Calibration "wizards"
- On-board diagnostics
- Set-point adjust
- Video triggers

**GreenStar 3 CommandCenter Touch display**

Like the GreenStar 3 CommandCenter the advanced touch screen version provides video functionality. With an added video camera, the screen is automatically triggered to display the reversing camera for example. The video function also lets you monitor sensitive areas like unloading without the need for additional monitors.

**GreenStar 3 2630 display**

The GreenStar 2630 display provides state-of-the-art performance and unparalleled ease of use. This all-new monitor features a 26 cm color touch screen. It can run all i-solutions you need to make your operation more productive – e.g. documentation features. Further highlights include a USB port for data transfer and video functionality.

Maximise your harvest potential with a 600R Series Platform

John Deere 600R Series Platforms deliver lower, faster cutting that you can easily adjust to suit your conditions.

Available in widths from 4.30 to 10.7 metres, these platforms use stainless steel feed plates to help keep crop sliding smoothly into the 4-way adjustable auger. To ensure a clean cut with less shatter loss, we fit a counterbalanced, epicyclic knife drive that practically eliminates vibration.

Set up in seconds

All 600R Platforms offer single-point attachment of electrical and hydraulic lines and latch pin engagement. No daily maintenance is required.

Maximum visibility: The small diameter reel tube, open ends and open spider frames give operators the best possible view of the knife and crop dividers.

No rust, ever: Stainless steel feed plates in front of the auger ensure smooth, even feeding to the intake auger, year after year, season after season.

No obstacles: Retractable fingers all along the auger help to smooth feeding and boost capacity. Breakaway grooves and retainers are standard, so there's no danger of a broken 'finger' entering the combine.

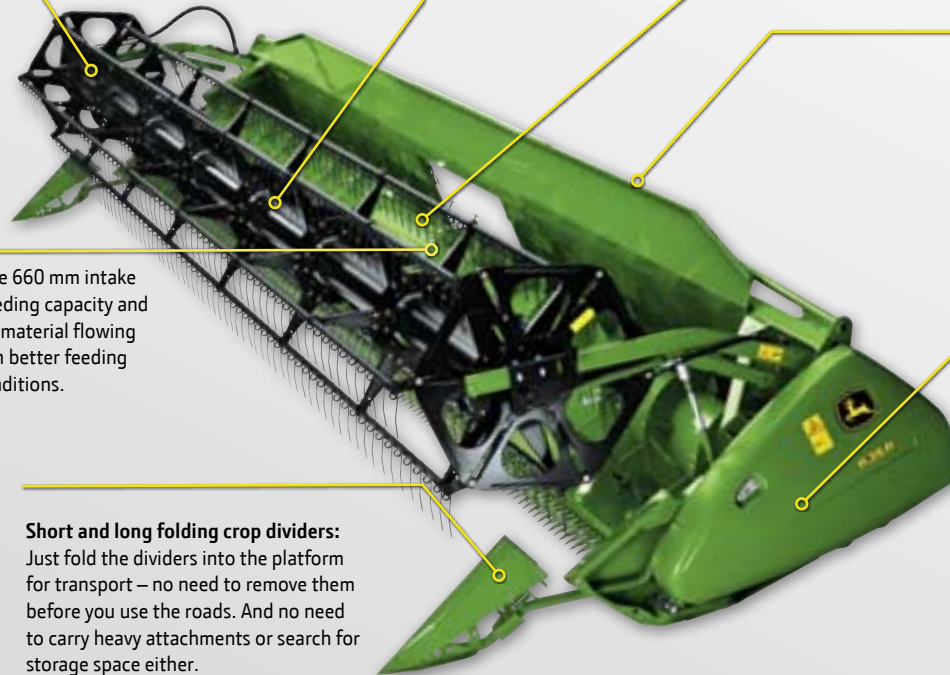
Optional top beam deflector sheet: Available on 622R through 635R models, this new option reduces grain loss and crop accumulation in the feederhouse.

Smooth intake: The massive 660 mm intake auger provides plenty of feeding capacity and is 4-way adjustable to keep material flowing smoothly. That means much better feeding performance in difficult conditions.

Short and long folding crop dividers: Just fold the dividers into the platform for transport – no need to remove them before you use the roads. And no need to carry heavy attachments or search for storage space either.

Cuts out vibration: The positive, epicyclic gear case knife drive provides in-line knife motion for almost vibration-free operation. The counterbalanced drive provides smoother cutting with less shatter loss.

Non-clog knife guards fully enclose the knives for cleaner cutting. The higher knife speed, double cut knife system and longer knife stroke all enhance cutting capacity. Knife sections are self-cleaning, and are bolted on for easy replacement in the field.





Premium Flow headers

Maximise your combine's harvesting ability – without having to convert the header between crops. Material is actively transported from the cutterbar to the feed auger in a constant flow. This boosts your combine's output significantly – even in laid crops.



RapsProfi II

Rape seed can be challenging to harvest: the stems are interwoven, and the pods burst when they hit the cutterbar. This extension cuts losses by up to 30 kg per hectare, so it pays for itself in no time. Fits easily, no tools required.



Sunflower attachment

Sunflowers have fragile stems and the heads often fall to the ground before they enter the machine. This easy to fit solution uses sheet metal covers on the reel to prevent spiking of the heads.



Header trailers

Transport your headers safely with these sturdy 'vario' trailers that allow quick and simple rape extension attachment. Features include solid centre frames and support wheels and heavy duty axles and tyres.

600C corn heads: High speed harvesting.

Higher yields and hybrids with tougher stalks are a real challenge at harvest. That's why we build our 600C corn heads for reliability and strength.

All components are robust enough to harvest even the toughest, thickest crop effortlessly.

The high-performance gathering chains, auger and trough make sure every kernel makes it inside the combine. The bottom line? Fewer tossed ears, less ear shelling and less free grain in the trough.

Not available in UK



Gentle geometry

The special design of the stalk rolls ensure optimal material transport. Stalks are drawn through more gently and then chopped finely and consistently by the StalkMaster chopper.



Ease of service

A gas strut gently lifts the row unit for easy access to critical service points



Road-ready in seconds

This convenient folding mechanism doesn't waste a second between jobs. Choose either a 6 row or 8 row folding version.



Special headers

For special crops and special weather conditions John Deere has a header or attachment to match.



600F

Superb performance in low crops:

- HydraFlex hydraulic float system
- Premium contour following
- Exceptional cutterbar flexibility at all pressures

Not available in UK

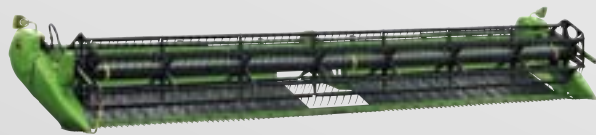


615P

Ideal for windrow harvesting in wetter climates:

- FieldGlide air suspension system
- Dual-belt design for low losses
- High throughput in windrows

Not available in UK



600D

Ideal for wheat, barley and oats at medium yields:

- Work fast even in low crops
- Minimum cutting height 3.5 cm
- Windrowing capacity for wet crop or pick-up harvesting

Not available in UK



900D

The affordable solution for wheat and barley in medium straw yielding conditions:

- Proven performance at a budget price
- Optimised crop flow for faster harvesting
- Excellent ROI

Not available in UK

Your benefits at a glance

- Tremendous material handling
- Decreased cob loss
- Improved residue processing
- Better overall harvesting performance

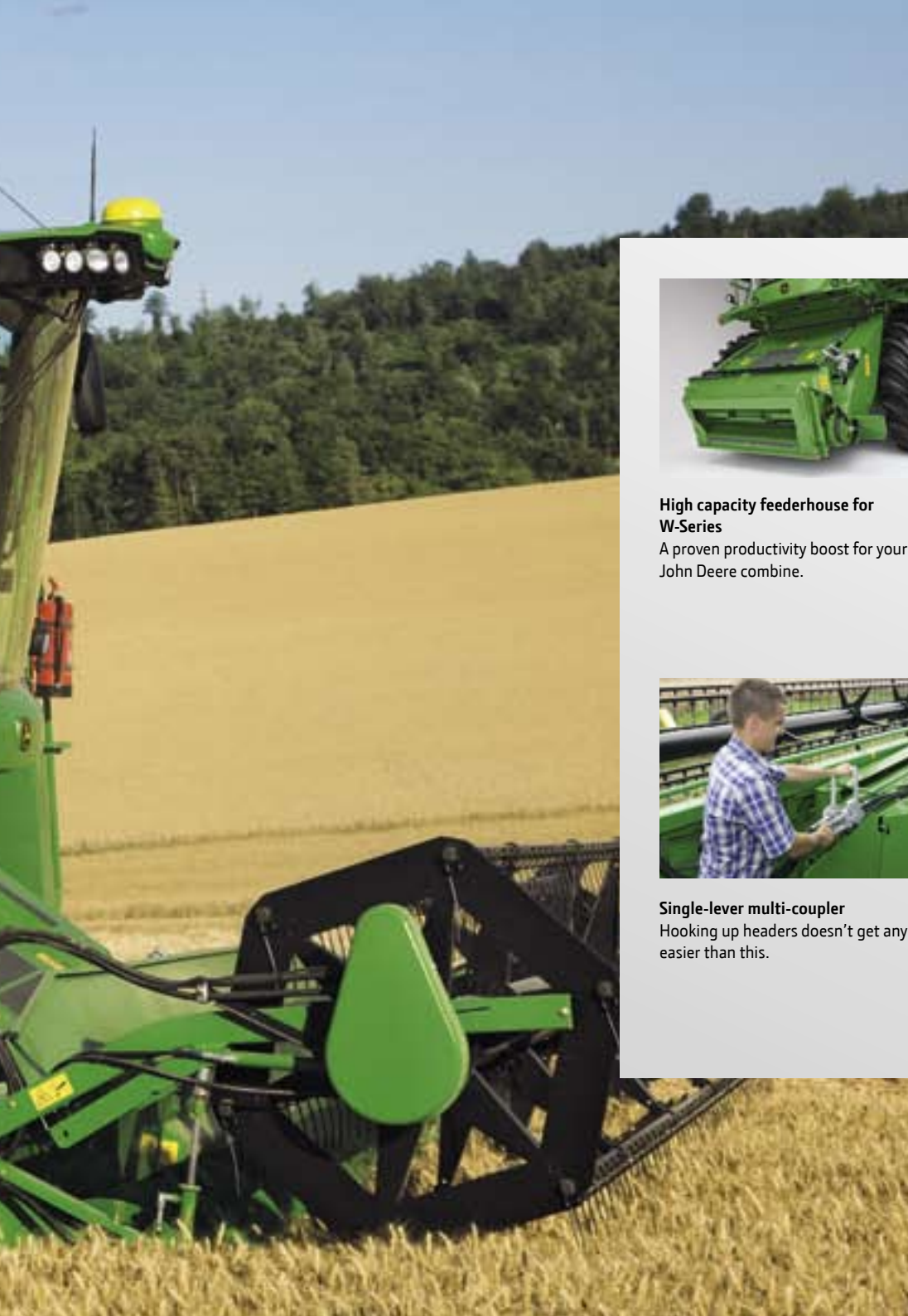
Feed me!

However tough or green your crop may be, this heavy duty feederhouse converts it into an even mat that feeds the separator perfectly.

To keep crop flowing smoothly, we fit a rugged conveyor that rotates on a large, floating front drum, a robust feederhouse drive with a high-torque slip clutch and a powerful reverser that removes even the toughest plugs effortlessly.

Thanks to our unique 'straight through' design, the feeding, threshing and separating components are all the same width. That way, the crop mat doesn't have to change shape or direction.





High capacity feederhouse for W-Series
A proven productivity boost for your John Deere combine.



Heavy duty Feederhouse Drive
The durable high-torque slip clutch ensures peak performance and a long lifecycle.



Visibly better
The long feederhouse design gives operators a full view of the header and its height-of-cut without having to lean forward. They can also see the stubble height behind the header.



Feederhouse reverser
The 80 hp reverser makes light work of stubborn plugs.



Single-lever multi-coupler
Hooking up headers doesn't get any easier than this.



Easy adjustments
The front plate can be adjusted fore and aft to compensate for different tyre sizes, crops and conditions. This ensures optimal transition from the header at all times.

Your benefits at a glance

- Tough components stand up to green, high-yield crops
- Design supports smooth crop flow into separator
- Long feederhouse for a shallow angle of cut and a thin, uniform crop mat

Outstanding performance in all crops and conditions

John Deere has long years of experience with walker combines. The proven W-Series has been harvesting reliably and cost efficiently all over the world for years. With its mature walker technology it combines high productivity with gentle threshing and excellent straw quality in a wide range of conditions.

The tangential tine threshing concept uses a large 660 mm cylinder, followed by a large diameter beater. The long, 11-stage walkers are easy on grain, straw and fuel and the unique PowerSeparator drum is extremely effective at picking trapped grains out of the straw mat afterwards.

The whole system is designed for simple, reliable operation and quality results. Yet thanks to the large powered separation area, the W-Series keeps pace with many competitors that use more complicated active separation systems.

- 1.50 m² powered separation area on a 5-walker W-Series.
- 1.80 m² powered separation area on a 6-walker W-Series.



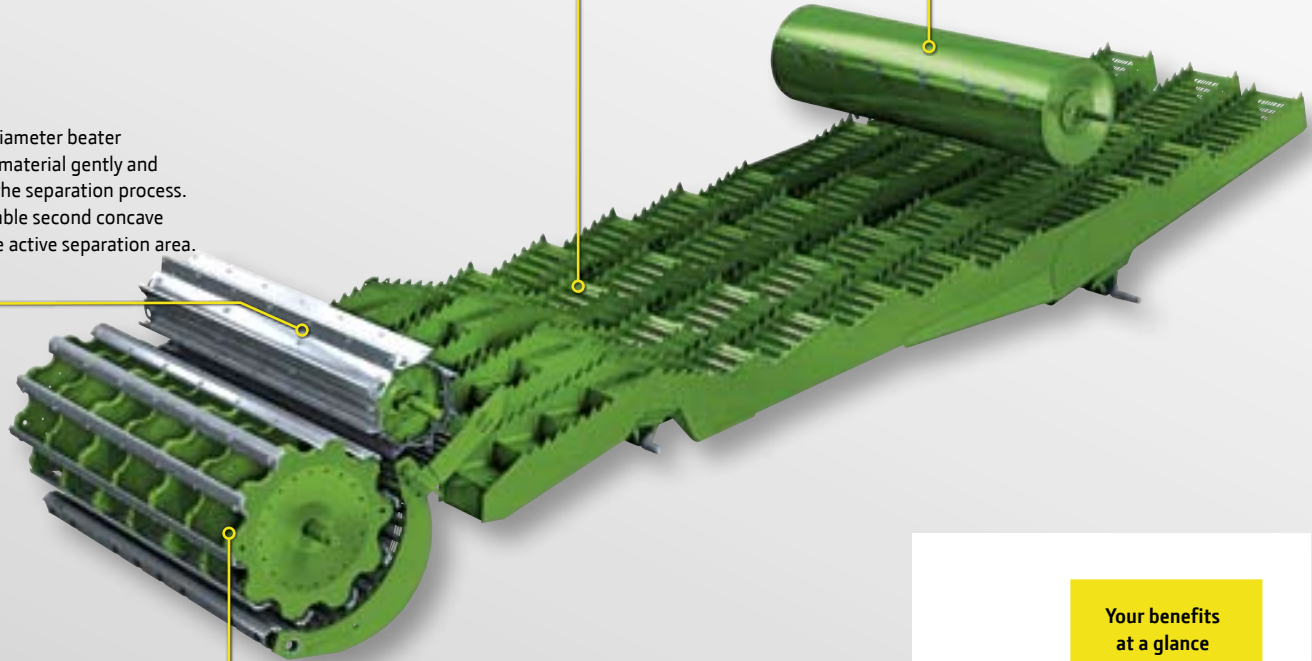


Gently does it!

With its versatile, fuel-efficient walker technology and gentle crop handling, the W-Series is ideal for owners and contractors alike.

Beater

The large diameter beater transports material gently and continues the separation process. The adjustable second concave extends the active separation area.



Walkers

Long, 11-stage walkers ensure excellent separation in difficult crops, gentle handling for higher straw quality and lower fuel consumption. The grid design permits active grain capturing.

PowerSeparator

The PowerSeparator uses pull and release technology to free trapped grain from the dense straw mat. The benefits are impressive, especially in damp conditions or dense crop.

Threshing

Setting the large inertia drum and long concave separation area for a wide range of crops and conditions is really easy. The difference in speeds between the straw mat and the threshing drum ensures thorough initial separation.

Your benefits at a glance

- Known for reliability
- Energy efficient 4-stage separation concept
- Walker technology for gentle crop handling and premium straw quality

John Deere Quadra-Flo – the ultimate cleaning system

Our Quadra-Flo cleaning system ensures top quality grain and can handle the heaviest volumes of material.

Set and forget

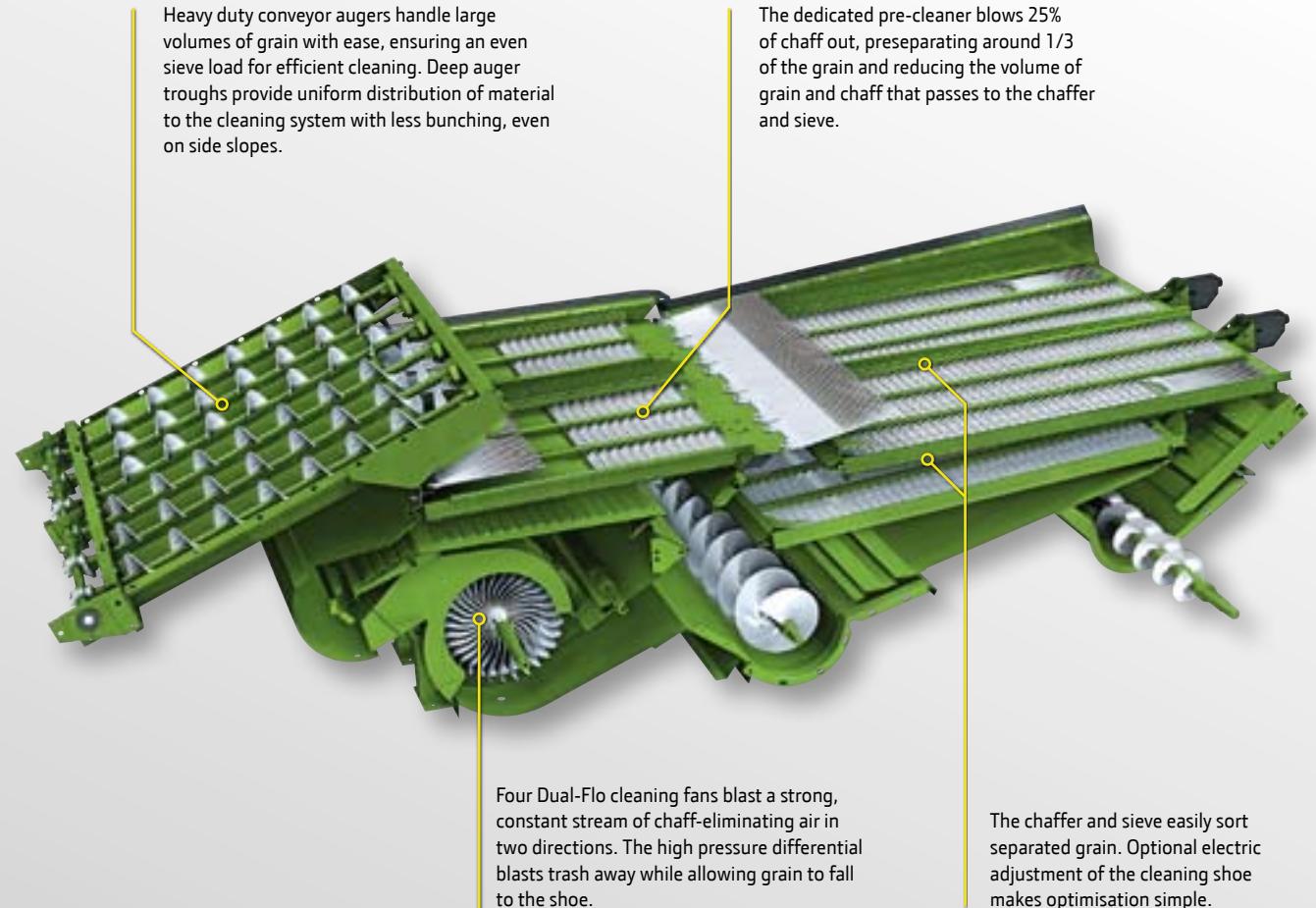
Ideal for high yielding crops, Quadra-Flo provides a clean grain tank sample with minimal adjustments in all conditions. It's so efficient, you can set the shoe in the morning and only minimal adjustments have to be done throughout the day.



Grain sampling solution puts John Deere's excellent grain quality close at hand.



The integrated video functionality in the GreenStar 3 Display allows a perfect view to the rear of the combine, in the grain tank or on the unloading auger – providing excellent, customizable views, when having a camera installed.



The grain handling is outstanding



High speed unloading on-the-go: The electronic engine management system makes sure your harvesting capacity is never compromised.

Unloading is probably the most stressful part of the entire harvesting process but with a W-Series, you'll unload faster and more comfortably than ever before. The 11,000 litre grain tank is the perfect match for your machine's high productivity and capacity. The electrically operated covers open wide for maximum capacity and the high, fountain-style loading auger has a U-joint that makes manoeuvres and storage much easier to handle.

Smooth start-up

The electro-hydraulically actuated unloading drive ensures smoother starts and no belt slippage. The one-touch switch allows you to swing the auger smoothly and precisely to any position you require.

Your benefits at a glance

- Enormous grain handling capacity helps improve harvest efficiency
- Intuitive unloading auger control at your fingertips ensures perfect grain filling
- When unloading grain, you'll get a horsepower boost on-the-go

Uniform spread today earns money tomorrow

Fine chopping, extra-uniform spreading

If you're looking to chop and spread your residue, our residue management system is the answer. Featuring fine cut chopping quality and even distribution behind the combine – even across the widest bouts. That makes this machine perfect for no-till and minimum-till fields.

An optional dual speed chopper drive allows you to quickly change between two speed ranges for operation in different crops.



The residue management system allows you to spread the chaff to the sides and is stepless adjustable in width to fulfill the need to spread the width of our widest headers.



To keep an even spread pattern in cross winds and in hilly conditions; there are optional electrically adjustable vanes on the chopper. This allows the operator to direct the spread to the left or right of the machine.



Chaff out for bedding

The chaff spreader allows you to spread chaff to the sides of the combine while simultaneously windrowing the straw. Perfect for farmers who bale straw and use it for bedding purposes.

Excellent straw no matter how you use it

Whether you bale your straw for bedding or use it as feed, it doesn't get any better than this. You'll get the longest straw for the highest straw yields. With our new W-Series combine, you'll see straw quality never seen before.

John Deere residue management systems give you the features you need to tailor the combine to your required farming results.

Your benefits at a glance

- Great chopping performance for fast straw rotting
- Even residue distribution
- Electric vane tailboard available for sidewind compensation

PowerTech PSX: Power for your harvest.

The new W-Series is powered by the finest engine we've ever built: a 6-cylinder John Deere PowerTech PSX with turbocharger. The W660 model has a 9 l engine that delivers 273 kW (365 hp/371 PS)*.

Horsepower you can depend on

The secret to this impressive power lies in the turbochargers and the high pressure common rail system. The high capacity cooling system and air-to-air after cooling also improve engine performance. This is a tough workhorse that won't let you down!

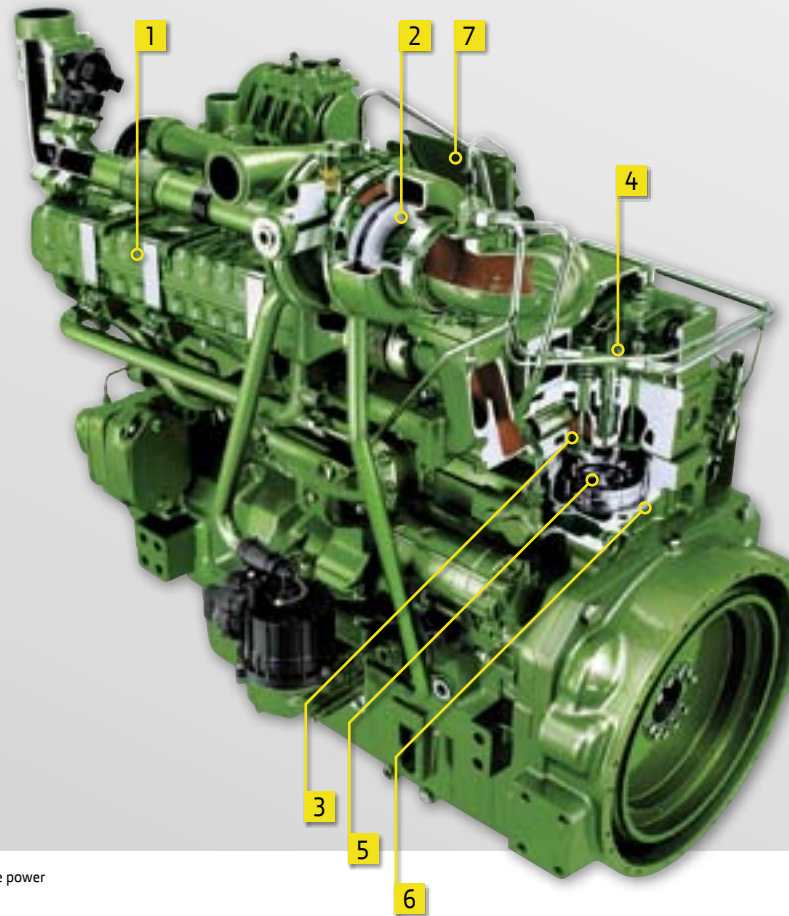
Stage III B made simple

The new PowerTech PSX is so advanced, it meets emission Stage III B regulations all by itself. It does not require any Urea (AdBlue). All you need is diesel.

Your benefits at a glance

- No need for Urea (AdBlue), only diesel is required
- John Deere Extra Power when the going gets tough
- Power boost during unloading for full harvesting performance
- Simple efficient drivelines

*Max engine power



1 EGR cools and mixes measured amounts of cooled exhaust gas with incoming fresh air to lower peak combustion temperatures, thereby reducing NOx.

2 The series turbochargers deliver more boost pressure which increases the performance.

3 4-valve cylinder head provides excellent airflow resulting in greater low-speed torque and better transient response time.

4 HPCR fuel systems provide variable CommonRail pressure, multiple injections and higher injection pressure with 2000 bar.

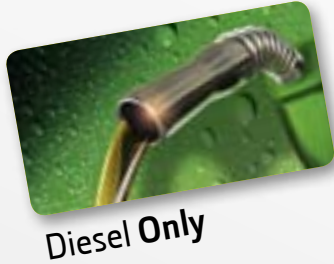
5 Low-friction, single-piece steel piston improves fuel economy, reduces emissions and increases durability.

6 Directed top liner cooling contributes to improved oil control and increased durability.

7 John Deere electronic engine controls: faster engine control unit (ECU) manages both engine and exhaust filter.

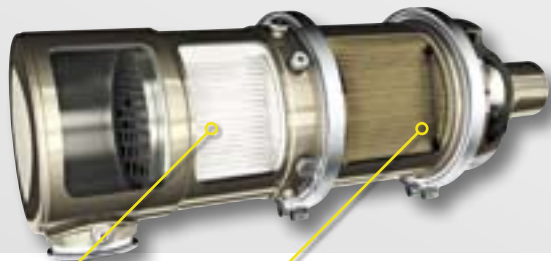
GreenSimplicity

No need for Urea (AdBlue). The new PowerTech PSX is so advanced it meets current and future emissions regulations all by itself. All you need is diesel.



With the aid of DOC + DPF filtering techniques, even the smallest particles can be removed. Here's how it works:

- The DOC reacts with exhaust gases to reduce carbon monoxide, hydrocarbons and some particulate matter.
- The DPF traps and holds the remaining particulate matter.
- The DPF oxidizes the trapped particulate matter, using heat from the exhaust filter. This continuous cleaning process takes place under normal operating conditions.



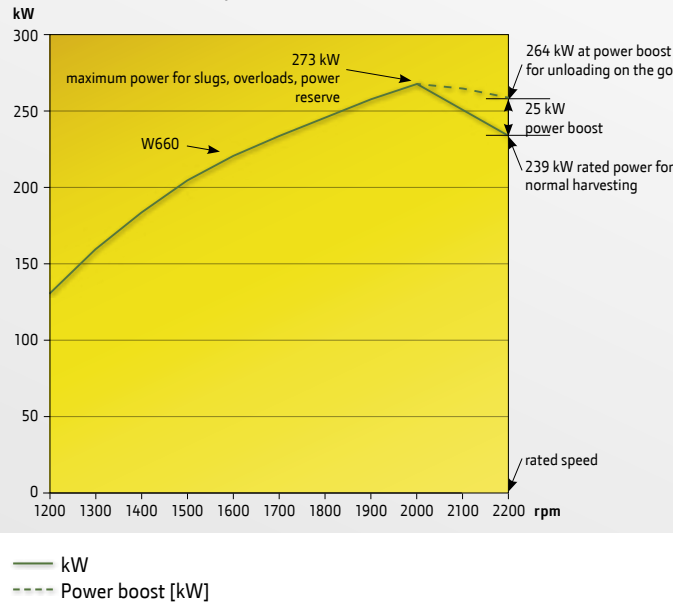
Diesel oxidation catalyst (DOC)

Diesel particulate filter (DPF)

John Deere Extra Power

Engine power increases as the engine speed is pulled down by the crop harvesting load. This famous John Deere Extra Power makes it much easier to harvest on-the-limit when the going gets tough without fear of stalling. Plus an additional horsepower boost is available above rated power during grain tank unloading for continuous harvesting performance. A John Deere exclusive!

PowerTech PSX (9 l) power curve



HillMaster: Harvest at your best level

HillMaster together with the SlopeMaster system ensures flat-land performance on slopes of up to 22%. SlopeMaster balances out slopes of up to 7%; HillMaster compensates for a further 15% by oscillating the entire combine body automatically as you drive.

Since the grain tank stays level, you can fill it right up and save on unloading stops. The improved side-to-side weight distribution gives you more traction and stability. And the level cab helps operators stay fresh and focused all day long.



Your benefit at a glance

Hilly terrain is hard on operators – and when grain slides to one side of the cleaning area, it can cause performance loss too. HillMaster solves both problems at a stroke.

The right transmission for your business

The new PushButtonShiftTransmission allows high operator comfort. By the simple push of a button the operator can change gears. Comfort and safety are improved by the integrated handbrake. As soon as the operator pulls the hydro handle in neutral the handbrake is engaged automatically.



3-Speed manual transmission

The 3-speed manual transmission with its proven and highly reliable design allows the highest cost efficiency and, as all our ground drive transmissions, will serve you year after year at minimal maintenance effort.

Push Button Shift Transmission

Shifting made easy

Our all-new three speed Push Button Shift Transmission makes shifting easy. Simply bring your machine to a standstill, select the gear you need by pressing one of three buttons on the arm rest and let the combine do the rest.

Comfort and control

To make operation easier, our all-new Push Button Shift Transmission applies the hand brake automatically. As soon as you pull the hydro level to the neutral position the park brake is applied for more comfort and control helping you through those long working days.

High flotation tyres

High flotation tyres reduce soil compaction by increasing your combine’s footprint without increasing its width. That way, you always get the best results within the transport width you require.

These advanced tyres use the “Low flotation” technology. Thanks to their outstanding load index, you can run them at very low air pressures. This in turn increases your footprint and traction – distributing the load evenly, reducing ground compaction.

These high performance tyres offer reduced ground pressure that reduces total input costs and helps you get difficult harvesting jobs finished sooner.

High flotation tyres reduce the risk of soil damage and loss of structure due to compaction and help avoid the frequency of primary tillage required.

We offer a range of tyres to meet your needs. Below are two examples of our new tyre offerings. Ask your dealer today for more details.

Narrow transport width at high flotation for 6-walker combines

	650/75 R32	800/65 R32	680/85 R32
Axle load	21,420 kg	21,420 kg	21,420 kg
Inflation	4 bar	3 bar	2.5 bar
Contact area	3475 cm ²	4248 cm ²	4375 cm ²
Machine width (6 w)	3.5 m	3.8 m	3.5 m

The new Continental 680/85 R32 provides a 3% bigger footprint than an 800/65 R32, yet keeps your combine’s width below 3.5 m even for 6 Walker combines, just like a 650/75 R32.

Narrow transport width at high flotation for 5-walker combines

	800/65 R32	IF800/70 R32 OPTITRAC H+	IF800/75 R32 OPTITRAC H+
Axle load	21,420 kg	21,420 kg	21,420 kg
Inflation	3.0 bar	1.5 bar	1.3 bar
Contact area	4248 cm ²	7516 cm ²	8238 cm ²
Machine width (5 w)	3.5 m	3.5 m	3.5 m

Maximum width 3.8 m

The 800/70 R32 and 800/75 R32 are the same width as an 800/65 R32, but higher in the carcass (70 resp. 75% of the width) and therefore deliver even higher flotation and less soil compaction.



Profit from JDLink telematics

Our advanced, web-based telematics solutions give fleet managers real-time answers to the challenges that matter most.

- Machine location – which fields are my machines in and where exactly?
- Location tracking – where and in which fields have my machines been running and what did they harvest so far?
- Geofencing – how can I protect machines against misuse or theft?
- Maintenance planning – when's the next maintenance due and what's the best way to manage it?
- Fuel consumption – how much fuel are my operators using for different operations?
- Machine hours – how long was my machine running at customer A?
- Harvest performance – how can I monitor and optimise the productivity of my harvesting fleet?
- Operator training – do my operators need more instruction?



Which pack suits you better?



Choose:	Ultimate	Harvest Module
Machine location	X	X
Location tracking	X	X
Geofencing	X	X
Maintenance planning	X	X
Fuel consumption	X	X
Machine hours	X	X
Operator Training	X	X
Harvest Performance	-	X
Combine settings	-	X



JDLink Ultimate

This advanced solution is for real fleet managers. But it's not only a professional management tool; you can also make sure that your machines are protected from theft & misuse and the diagnostic capabilities keep your machines harvesting.

JDLink Harvest Module

This premium package allows fleet managers to increase efficiency and productivity of their machines. By combining machine and crop data, JDLink Harvest Module gives you access to machine settings, yield, throughput and much more besides on the fly. You can compare different machines and get detailed productivity reports. Moreover JDLink Harvest Module supports alerts to your mobile device so you know if machines are standing in the field waiting for grain trailers or fuel, real time. It is the first real time management system designed for customers not just at the desk but for managers who are on the move during harvest monitoring their total operation.

ServiceAdvisor Remote

But there is another feature common to the full range of JDLink packages and that's Service Advisor Remote. With your agreement your dealer is able to remotely access your machines from his dealership location. So if you have a failure he can access trouble codes and details about your machine. He can even make software updates and diagnostics all from his dealership ensuring that when he does arrive he is well informed on the likely failure. And if you grant him JDLink access, he'll know the machines location too. No longer lost time trying to give him directions or having the technician arrive at the yard instead of the field where you need him. All that helping to keep your machines running more and letting you make well informed decisions in real time.

Special offer:

Like to test-drive JDLink Ultimate for 12 months, absolutely free? Ask your dealer for details today.

Let AutoTrac do the steering for you



With our satellite-based hands-free AutoTrac system, every pass matches the full cutting width of your platform. This reduces overlap by as much as 90% – even at night and even after long hours at the wheel. Since the combine does the steering, your operators are less stressed and can focus on optimising their output.

AutoTrac RowSense for corn

AutoTrac RowSense gives you the same productivity in corn too. Special sensors on the header provide real-time data on the position of the row (RowSense). When the data flow gets interrupted, AutoTrac fills in the gaps automatically by providing GPS data instead. Together, these two systems ensure maximum uptime – and unparalleled harvesting accuracy.



Your benefits at a glance

- Up to 90% less overlap
- Same accuracy day or night
- Less fatigue, more productivity

The new GreenStar 2630 ISOBUS display

From documentation and performance monitoring to guidance and ISOBUS control, the GreenStar 2630 sets new standards for convenience, comfort and efficiency.

State-of-the-art support

The 26 cm full-colour TouchScreen display lets you control all your i-Solutions from a single intuitive interface. Features include:

- Documentation
- Guidance
- Performance monitoring
- USB port for data transfer
- Video enabled
- Brilliant 26 cm touchscreen
- ISOBUS capability
- User access levels
- Standby mode for road transport or night-time use



Performance Monitor

The Performance Monitor feature provides key productivity data such as vehicle speeds, area counters and fuel efficiency.



Video

The video function enables operators to monitor sensitive areas to further increase productivity.



HarvestDoc

As you harvest, HarvestDoc compiles yield and moisture data automatically and displays them in real-time on your GreenStar 2630. That means your operators always have the latest information – and can optimise their settings accordingly.



Meet the machine

1 NEW Deluxe Cab

- More space and comfort
- Easy to use harvesting controls
- Ultimate visibility

See pages 6 – 9

2 NEW header line-up

- Full range for all crops and conditions
- Widths up to 10.7 metres
- Best-in-industry reliability

See pages 10 – 13

3 Long and strong feederhouse

- High lift capacity
- Best reliability
- Fast response times

See page 14

4 Advanced walker design

- Excellent all-purpose separation for a broad range of crops
- Easily handles heavy volume and high moisture crops
- Low specific power requirements provides low fuel consumption

See page 16

5 QuadroFlo cleaning system

- Top quality grain even at high volumes
- “Set and forget” system needs few adjustments

See page 18

6 High capacity grain tank

- Up to 11,000 L capacity
- Electrically operated covers

See page 19

7 High speed unloading

- Electro-hydraulic unloading drive for smoother starts and no belt slippage.
- Electronic engine management system for peak harvesting capacity.

See page 19

8 Stage III B efficiency

- Single-fluid “diesel only” solution
- No compromises on power

See page 22

9 NEW transmission options

- PBST – Push Button Shift Transmission
- 3-speed transmission

See page 24

10 Residue management

- Even distribution of chopped straw
- Best cut quality
- Smooth spreading

See page 20 – 21



	W 540	W 550	W 650	W 660
Feederhouse				
Conveyor chains	3 chains	3 chains	4 chains	4 chains
Header reverser power (hp)	80	80	80	80
Threshing Cylinder				
Cylinder diameter (mm)	660	660	660	660
Cylinder width (mm)	1400	1400	1670	1670
No. of rasp bars	10	10	10	10
Cylinder speed range, standard (rpm)	450 – 980	450 – 980	450 – 980	450 – 980
Cylinder dual range drive, option (rpm)	220 – 480 & 450 – 980	220 – 480 & 450 – 980	220 – 480 & 450 – 980	220 – 480 & 450 – 980
Cylinder Concave				
Concave size (mm)	750 x 1400	750 x 1400	750 x 1670	750 x 1670
Secondary Cylinder and Concave				
Beater diameter (mm)	400	400	400	400
Secondary cylinder speed	single speed rel. cyl.	single speed rel. cyl.	single speed rel. cyl.	single speed rel. cyl.
Secondary concave	adjustable	adjustable	adjustable	adjustable
Total Active Separation Area				
Cylinder concave area (m ²)	1.05	1.05	1.25	1.25
Secondary concave area (m ²)	0.45	0.45	0.55	0.55
Total active separation area (m ²)	1.50	1.50	1.80	1.80
Straw Walkers				
Number of walkers	5	5	6	6
Walker length (m)	4.6	4.6	4.6	4.6
Number of walker steps	11	11	11	11
Walker area (m ²)	6.4	6.4	7.7	7.7
PowerSeparator				
Drum diameter (mm)	410	410	410	410
No. of, type, pattern of fingers	15 retractable, in-line	15 retractable, in-line	18 retractable, in-line	18 retractable, in-line
Cleaning system Dual-Flo; adjustable Pre-Cleaner				
Fan speed range (rpm)	700 – 1525	700 – 1525	700 – 1525	700 – 1525
Grain Tank				
Volume (L)	8000 base; 10000 opt. for LL only	8000 base; 10000 opt. for LL only	9000 base; 11000 opt. for LL only	9000 base; 11000 opt.
Unloading auger swing range (deg.)	105	105	105	105
Unloading rate (l/sec)	88	88	88	88
Standard Straw Chopper				
Number of knives	56 rotating, 54 stationary	56 rotating, 54 stationary	68 rotating, 66 stationary	68 rotating, 66 stationary
Engine				
John Deere PowerTech Plus. 6- cylinder, turbocharged, air-to-air after-cooled, diesel				
Engine type	6068HZ480C	6068HZ482	6090HZ003C	6090HZ011Low
Displacement (l)	6.8	6.8	9	9
Rated speed	2400	2400	2200	2200
Rated power – 100 (harvesting power) (kW/hp/PS)	187/251/254	216/290/294	234/314/318	256/343/348
Rated power (kW/hp/PS) "ECE R120"	175/235/238	202/271/275	219/294/298	239/320/325
Maximum power (kW/hp/PS)	191/256/260	224/300/305	250/335/340	273/365/371
Maximum power boost for unloading (kW/hp/PS)	22/30/30	22/30/30	25/34/34	25/34/34
Fuel tank capacity (L)	800	800	800	800
Ground drive				
Manual 3-Speed Transmisson	3 speeds with mechanical shift and brake			
PushButtonShift Transmisson	3 speeds with electric shift and brake			
Transport width				
With 650/75 R32 (m)	3.3	3.3	3.5	3.5
With 680/85 R32 (m)	3.3	3.3	3.5	3.5
With 800/75 R32 (m)	3.5	3.5	3.8	3.8

Experience the future of support

Outstanding dealer support is the key to distinctive uptime and productivity. And because your John Deere dealer understands your business needs as well as your machines, he can provide the all-round service you need to work profitably.

To keep our dealers up to speed on new developments and technologies, we train them frequently and in depth. That way, they can help you 'see what's coming' and plan for the future in good time. This expertise, together with the finest parts delivery service in the industry, is what makes John Deere dealers so valuable.



JohnDeere.com



This literature has been compiled for worldwide circulation. While general information, pictures and descriptions are provided, some illustrations and text may include finance, credit, insurance, product options and accessories not available in all regions. Please contact your local dealer for details. John Deere reserves the right to change specification and design of products described in this literature without notice.