

# VO-40-MHI

## Insulated Articulated Overcenter Aerial Lift

---

**WORKING HEIGHT:** 44 ft. 10 in. (13.6 m)

**HORIZONTAL REACH OVERCENTER:** 31 ft. (9.4 m)

**HORIZONTAL REACH NON-OVERCENTER:** 29 ft. 11 in. (9.1 m)

**MAXIMUM PLATFORM CAPACITY:** 400 lbs. (183 kg)



The **VERSALIFT** product line has grown to encompass models for every market. Whether it be a 29' man lift or a 180' material handler, there is a **VERSALIFT** to get the job done.

### For more information

Versalift  
254.399.2100  
[www.VERSALIFT.com](http://www.VERSALIFT.com)

# VO-40-MHI

## Insulated Articulated Overcenter Aerial Lift



### GENERAL SPECIFICATIONS (BASED ON 40" FRAME)

Horizontal Reach Over Center	31 ft. (9.4 m)
Horizontal Reach Non-Overcenter	29 ft. 11 in. (9.1 m)
Standard Platform Capacity	350 lbs. (160 kg)
Maximum Platform Capacity	400 lbs. (183 kg)
Maximum Jib Capacity	1,100 lbs. (500 kg)
Lower Boom Lift Eye Capacity	1,500 lbs. (680 kg)

### WITH STANDARD PLATFORM

Height to Bottom of Platform	39 ft. 10 in. (12.1 m)
Working Height	44 ft. 10 in. (13.6 m)
Stowed Travel Height	10 ft. 3 in. (3.1 m)
Weight of Lift w/o Outriggers or Subframe	3,500 lbs. (1590 kg)

### HYDRAULIC SYSTEM

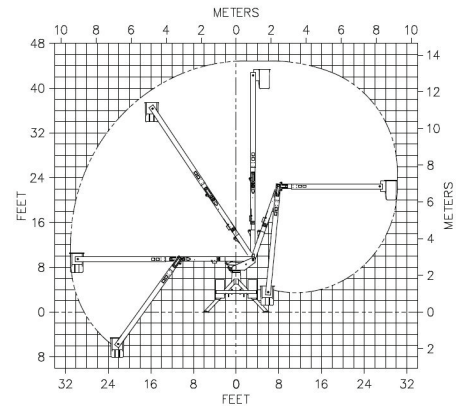
Operating Pressure	2500 PSI (175 kg/cm2)
Flow Rate	6 GPM (23 lpm)
Filtration	10 micron return 100 mesh suction
System Type	Open center
Power Source	PTO pump

### BOOM ACTION

Upper Boom Articulation	240°
Lower Boom Articulation	110° horizontal to 20° past vertical

### INSULATION GAP

Upper Boom	9 ft. 8 in. (2.9 m)
Lower Boom	12 in. (0.3 m)
Ambient Temperature Range for Structural Integrity	-40°F (-40°C) to 125°F (52°C)



#### NOTE:

1. Specifications may vary without prior notice
2. Required GVWR can vary significantly with chassis, lift mounting, location, service body, accessories and desired payload.

#### OPTIONS:

- 400 lb. Platform Capacity
- 24 x 30 Platform
- Hydraulic Jib Pole Extension
- Two-Speed Manual Throttle Control
- Backup Pump
- Category B Dielectric Rating
- Tool Port Pressure & Flow Control
- Second Set of Tool Power Outlets
- TruGuard™