

# T-SERIES COMBINES

HARVEST IN RECORD TIME

---

## NEW

---

TANGENTIAL  
PLUS SEPARATOR

---



**JOHN DEERE**

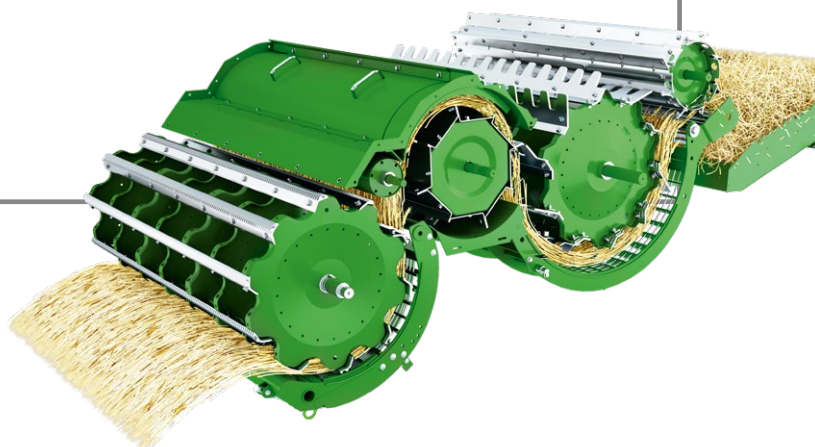
NOTHING RUNS LIKE A DEERE





## 10% MORE PERFORMANCE

Thanks to the new Tangential Plus rear rotor separator concave, once again, we deliver more performance.





# HARVEST IN RECORD TIME

## THE T-SERIES

The T-Series not only increases your productivity and efficiency but also gives you better quality grain and straw. Next season be sure to get the best out of your crop, even in the toughest of conditions – by making it a T-Series season.

The T-Series satisfies the need for more performance thanks to its large active separation area. No need to go for a rotor or hybrid combine concept and make a compromise on straw quality and fuel consumption. The T-Series can do it all!

## CONTENTS

Development .....	2	Residue management .....	26
Evolution .....	4	Transmission and road travel .....	28
Customer Focus .....	6	Traction .....	30
Overview .....	10	Engine and drivetrain .....	36
Headers .....	12	Cab and Controls .....	38
Feederhouse .....	14	ConnectedCombine .....	42
Threshing system .....	16	Automation and Telematics .....	44
Cleaning shoe .....	20	FarmSight Services .....	48
HillMaster .....	22	Parts & Services .....	50
Grain tank .....	24	Specifications .....	52

# WHEN GREAT GETS BETTER

HARVEST PRODUCTIVELY AND EFFICIENTLY  
LIKE NEVER BEFORE

When we introduced the new generation of T-Series combines in 2015, we took everything that was already great about the T-Series – and made it even better. And with Model year 2019 we have the next update in performance ready again!

The proven crop flow system doesn't bend or break your grain or straw and offers improved performance for all crops and all harvest conditions. The advanced threshing and cleaning systems now have one of the largest surface areas on the market. With the Model Year 2016 we increased performance up to 15% over the Model Year 2015 combine. But good was not enough for us – we wanted to make the T-Series even better and we made the next logical step. The new separator concave increases the output by up to 10% over the update from 2015. The new sectionalized concave saves you time during crop conversion and also provides better performance while the new tracks are a new era in terms of footprint, comfort and durability.



UP TO

**10%**

MORE  
PERFORMANCE





**REACH THE NEXT FIELD IN MINUTES  
AT 40 KM/H**



**EXCEPTIONAL STRAW AND GRAIN  
QUALITY**





# CUSTOMER FOCUS, TRUST AND RELIABILITY

## THE BASIS FOR TOP PERFORMANCE

The T-Series redesign back in 2015 brought about significant improvements in productivity, loss reduction, operation and conversion. The 2019 update builds on that and again upgrades performance by a hefty 10% by fine-tuning the rear separator concave design.



## BETTER THAN EVER: PRETTY MUCH EVERYTHING

Each and every component has been analysed by an independent testing institute and optimized by our engineers. Through the adjustment of the crop flow and air flow speeds, we were able to achieve maximum throughput and minimal losses. Alongside the many improvements such as the larger cleaning system, we have kept proven elements such as the number and height of the walker steps. We consciously decided against including active cleaning shoe levelling due to the excellent performance of our cleaning shoe on slight side slopes. This was the result of our research, and confirms what our customers already know: "If there's a side slope, you need HillMaster. But for slopes under 7%, you can do without." We tested all types of crops around the world, from barley to sunflowers and corn, all the way to New Zealand and Argentina. Our factory, too, worked around the clock on quality improvements with intensive tests in the factory and in the fields.






---

**MADE IN  
ZWEIBRÜCKEN  
GERMANY  
QUALITY  
SINCE**

---

**1863**

---

## **EVERY IDEA HAD TO MEET OUR STRICT REQUIREMENTS**

We did not pursue any idea that did not fulfil our strict requirements for user-friendly operation and maintenance. We also deployed forward-thinking technologies from other industries. For example, our cleaning shoe now features lightweight aluminium components. Our tests have led to the development of completely new connections with rivets that are commonly used in aircraft construction. This cleaning shoe has already proven itself by withstanding over 2,500 hours on the test bench. We're well-known for our reliability – and this continues to be the main goal of our development. To accommodate tracks, we had to design a completely new, reinforced frame. To accommodate the increased emptying power, we deployed the drives from the S-Series. And to further increase reliability, we incorporated a host of other proven components such as the rear axle from the 8000 Series forage harvester.



John Deere has been building combines since 1927. We are the largest combine harvester manufacturer in the world. To date, over 750,000 John Deere combine harvesters have been produced.





#### EXPERT CHECK

The Expert Check is your way to get your combine ready for the next harvest season. Our specially trained and certified Inspection Experts know which components require special attention – thanks to John Deere's sophisticated tools based on expertise from thousands of harvests.



#### 24 HOUR PARTS PROMISE

We've invested in the best parts logistics in the agricultural business. And with more machines in the field than any other, we hold more parts stock than anyone else. It all means we consistently deliver more than 97% of all orders within 24 hours. So whatever the challenge, you can rely on us to keep you moving.



#### BACK-UP MACHINE

We will provide a backup machine if parts are delivered too late. There is no complicated paperwork required. We'll take care of everything. What makes a difference is that we are not just paying a contractor. We physically have combines in the right amount and the right size on reserve at the dealership to deliver on our promise if needed.\*



#### TRAINING

Certified dealers deliver professional operator training carried out by factory trained experts. This training is available every year to refresh operator's skills and to train new operators.



#### EXPERTS IN PLACE

Certified dealers have full-time harvesting experts in both sales and service. Factory trained experts will help you set up and optimise your combine before the season starts. They will also be on hand throughout the harvesting season to give you help and advice to ensure your machine is operating at peak performance

# HARVEST PROMISE

## BACK-UP WHEN YOU NEED IT. GUARANTEED

Hour after hour. Day after day. You cannot afford to stop during the harvest. That's why we've created Harvest Promise – one of the most comprehensive support packages in farming.

We promise to get any parts you need within 24 hours of placing your order. If we fail and your combine can't harvest, we'll provide you with a back-up machine to keep you moving. It's that simple. There is no small print or complicated exclusions either. We are there for you.

## 100% ORIGINAL JOHN DEERE PARTS

Your John Deere combine will be repaired by your certified John Deere combine dealer using genuine John Deere parts, ensuring optimum performance.

\*Available at participating dealers only. A back-up machine is available for any John Deere combine harvester up to 7 years old. To qualify it must be maintained in accordance with the operator's manual and undergo a post-season Expert Check with any recommended repairs carried out.



**EXPERT CHECKED  
COMBINES UP TO 7 YEARS  
OLD ARE COVERED**





# BUILT FOR MORE

UP TO 10% MORE THROUGHPUT  
WITH A HOST OF SMART DETAILS

From cutting to residue management, from the field to the road, from first use to the end of the season – the T-Series will support you with clever technology, valuable features and innovative services so you can work faster, more comfortably and efficiently – for top performance under all conditions.



## 1 | LARGE ACTIVE SEPARATION AREA

More Performance without compromise on straw quality or fuel consumption.

## 2 | LARGE 660 MM THRESHING DRUM

Less broken kernels and good straw quality.

## 3 | FAST CROP CONVERSION

The sectional concave lets you switch between crops in record time.

## 4 | LARGE WALKER AREA

Long walkers separate the last bits of grain and gently treat the straw.

## 5 | LARGE CLEANING SHOE AREA

For ultra-low loss levels and superb grain quality in the bunker.

## 6 | HILLMASTER

Up to 22% side-hill compensation for the entire combine – not just parts of it.





**"IN TERMS OF PERFORMANCE  
THE T560I CAN EASILY KEEP  
UP WITH A 6-WALKER  
COMBINE!" (PROFI 03.2018)**

## **7 | LARGE GRAIN TANK**

Up to 11,000 l grain tank and high 125 l/sec unload rate.

## **8 | LARGE AND COMFORTABLE CAB**

Large, 3.3 m<sup>3</sup>, and quiet, 71 dB(A), and packed with innovate solutions for comfort and control.

## **9 | CONNECTIVITY OPTIONS**

AutoTrac, Documentation, Wireless Data Transfer to/from the Operations Center and remote support capabilities boost the effectiveness of your business.

## **10 | TRACKS WITH UP TO 40 KM/H TOP SPEED**

Our new track options offer 30% more footprint, 20% more comfort and 50% more durability with speeds up to 40 km/h.

## **11 | XTRA LARGE SEPARATOR**

The large separation drum is paired with a newly designed separator grid. The active separation area of 4.0 m<sup>2</sup> is one of the largest on the market.

## **12 | AGILE REAR AXLES**

The X-traction 4WD system offers a differential lock and traction control on all four wheels.



# HIGH PERFORMANCE HEADERS

## WHERE PROFITABILITY BEGINS

Small improvements in grain yields bring big increases in profits. That's why John Deere offers a comprehensive range of headers so you can find the perfect match for your crops and your combine. Choose from traditional auger designs (600R, 600F, 600X) to active crop feeding with belts (700PF, 700D or 700FD) in a wide range of widths up to 13.7 m. For further information on these headers and the rest of our range see our separate header brochure.



### 600R AND 600F

More than 650,000 600R headers have been built, making it a proven and field-tested combine header. It has many premium features including stainless steel feed plates, a large diameter auger and a linear knife drive. The 600F features a flexible cutterbar which lets you drive faster and cut cleaner on uneven ground and helps reduce losses in down or tangled crops. A 600R or 600F with rapeseed attachment has low losses due to the long distance from the knives to the auger.

### 700PF

The 700PF features an active transport, head-first crop flow process which results in a very constant material flow so the combine can run at close to its maximum capacity. This makes it ideal for short stalked grains or laid and long-growing crops as the feed auger only captures cut material. Conversion to rapeseed can also be done in less than 3 minutes. The new 700PF headers with their huge 760 mm augers are the perfect match for any combine in special conditions like down crop, tall rapeseed or short spring barley.





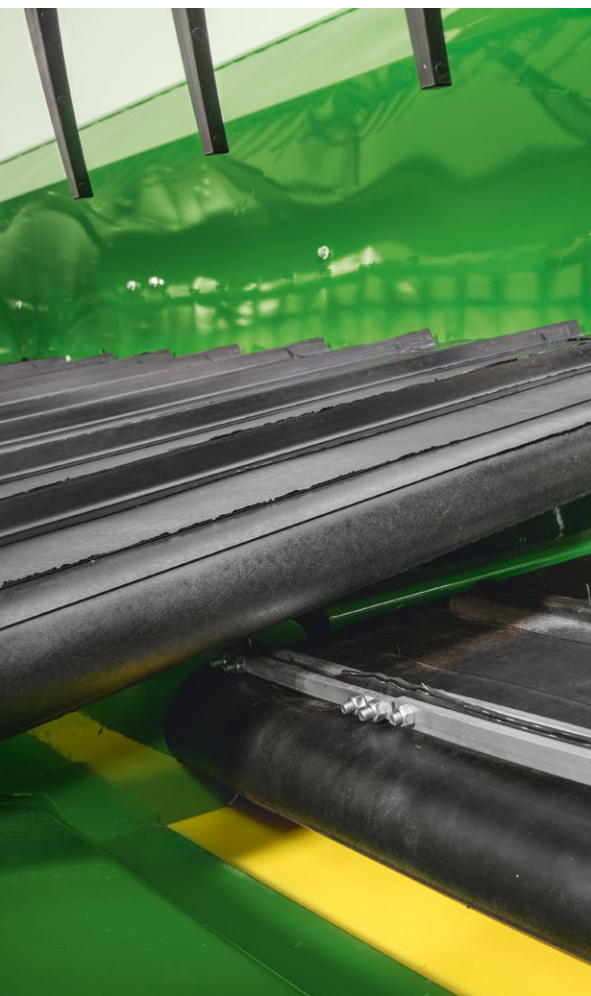


### CORN HEADERS

Our corn headers are made in Germany by Geringhoff. Available in a wide range of widths and row spacings to match your combine's capacity, they can run at high ground speeds even in down crop. Designed for minimal maintenance, the secret to their legendary durability is the precision engineered aluminium main drives, row unit gearboxes and the Centaflex couplings which eliminate stress on the bearings and drive mechanism of each row unit.

### 600X

The ultimate header if you're harvesting a variety of crops. The 600X has an unbeatable conversion time of under 3 minutes without the need for any tools. It has one of the longest tables on the market (1200 mm) for a variable header, so grain losses are minimal. You can also adjust it by up to 800 mm from the comfort of the cab to respond to changing conditions on-the-go.



### 700D & 700FD

The 700D header promotes head first feeding for smooth crop flow. Its lightweight design reduces ground pressure and the hydraulic tilt angle adjustment adapts quickly to down crop. The 38 mm minimum cutting height leaves fields clean and the knives and fingers are specially hardened to working closely to the ground. Fully integrated into the combine display it's also rapeseed capable thanks to the 1650 Nm slip clutch and 450 mm top auger. Mechanical side knives and a sealing kit option are all it needs to be rapeseed ready. The 700FD offers all the features of the 700D with the added benefit of a flexible knife with up to 190 mm travel range. Instead of using hinged wings, it flexes over the whole width of the cutterbar to minimise crop losses on uneven ground.



# XTRA CAPACITY FEEDERHOUSE

## PERFECT CROP FLOW AND THRESHING FROM THE VERY BEGINNING

The robust T-Series feederhouse is the ultimate foundation for perfect results. The pre-acceleration effect is a vital part for more performance.

“The T eats (almost) everything” (Profi 03.2018)

The wear plates are durable and do not need to be changed in your machine's lifetime and the slip clutch has been reinforced to 900 Nm. What's more, even the larger headers can be used with damp grains in high yield locations. In the event that the feederhouse becomes blocked, the 80 hp mechanical reverser will help get everything out easily enabling harvesting to begin again as quickly as possible.





## CONNECT WITH EASE

Thanks to the multi-coupling system, you can connect hydraulics, electrics and the mechanical header lock with a single movement.



## BETTER VISIBILITY

The long design of the feederhouse puts both header knife and stubble height into your field of vision without you having to strain your neck. The large opening also means no annoying dust.



## FULLY ADJUSTABLE

The mechanical fore/aft tilt of the feederhouse in base enables you to change your cutting height or header angle as desired.



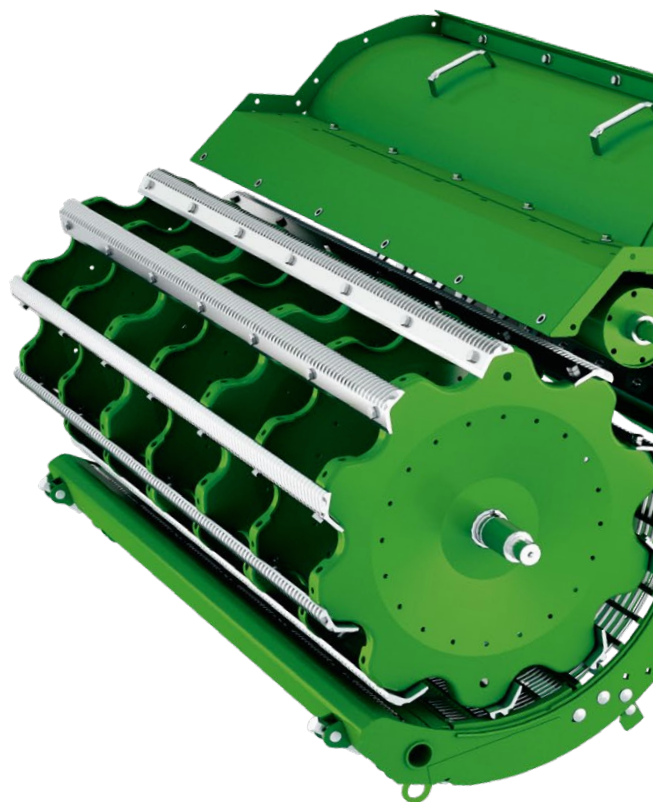
"We worked with experts from an independent institute to determine the optimum crop flow speed for feederhouses and discovered that we were able to go up from 2.8 to 3.6 m/s. We found that faster speeds which lead to increased pre-acceleration do not automatically result in more throughput, but the opposite: the materials cannot be correctly taken in by the drum and are moved too quickly through the concave."

VOLKER FUCHS, ENGINEERING TEAM  
LEADER DESIGN

# FLOW DESIGNED FOR QUALITY

## HIGHER THRESHING PERFORMANCE IN TOUGH CONDITIONS

The unique multi-drum threshing system with the crops flowing above the rear beater ensures a consistent crop flow without sharp bends or abrupt changes in direction. This guarantees excellent grain and straw quality and reduces power requirements.



Since the launch of the the new T-series in 2015, we have further optimised this proven concept: the wrap angle of the threshing cylinder has been extended by 8 degrees and the separator has been increased from 660 mm to 800 mm – one of the largest cylinders on the market. Despite increasing the overshot beater to 500 mm, we kept the angles and interconnection points between the cylinders in order to guarantee the same optimum crop flow as ever. This means the entire threshing and separation area (=active separation area) has been increased by 18%. On the 6-walker combine, this is equal to 4.00 m<sup>2</sup> – one of the largest threshing and separation areas on the market. Compare them yourself: a John Deere 5-walker with an active separation area of 3.30 m<sup>2</sup> offers more separation area than most 6-walker models on the market – and this with a smaller transport width!

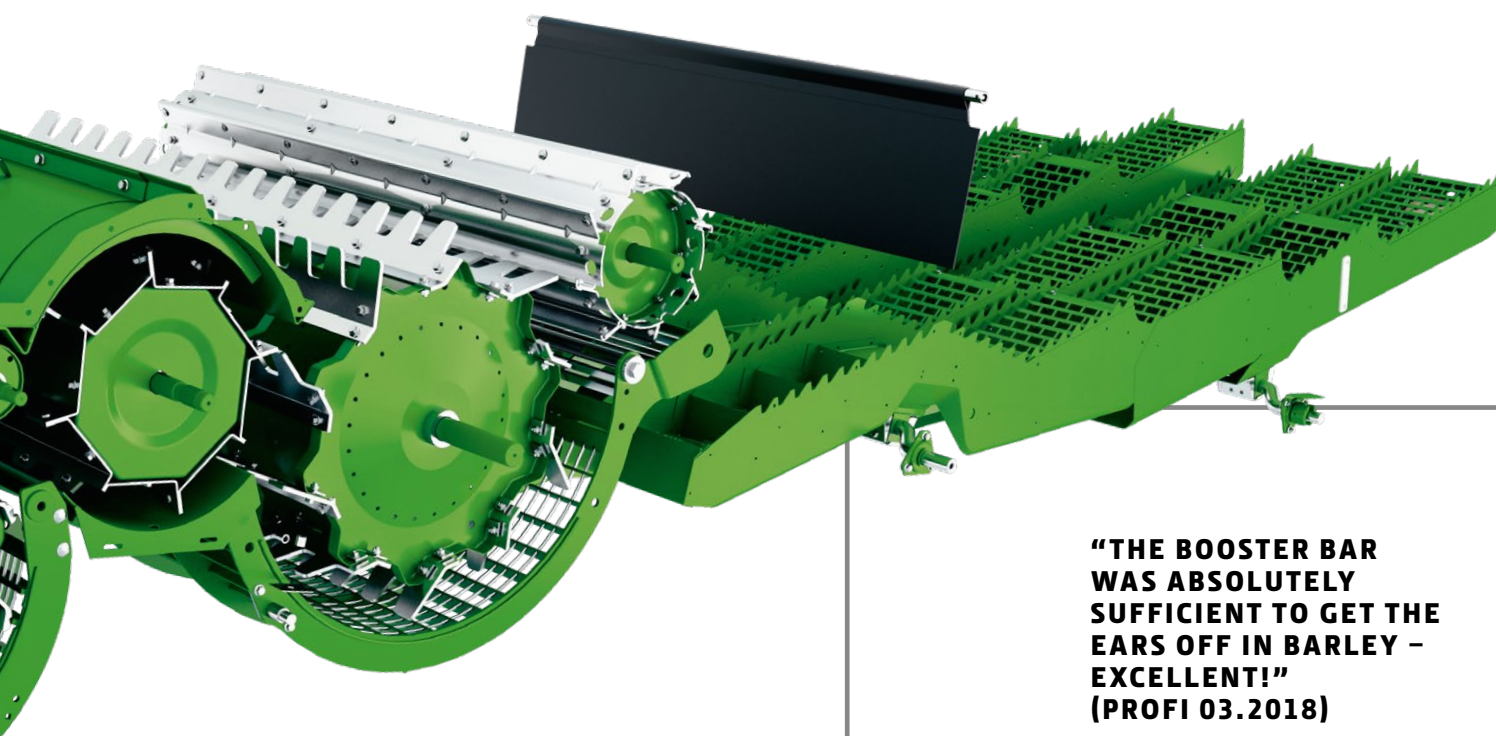
### LARGE CYLINDER WITH GENTLE THRESHING

The 660 mm cylinder guarantees gentle threshing with well preserved straw and reduced grain damage due to its large diameter 10 rasp bar design, high oscillating weight and the fact that John Deere combines thresh more by rubbing rather than beating. The open cylinder directs the dust into the machine and doesn't force it out of the feederhouse – giving you a better view of the header.

### TANGENTIAL PLUS SEPARATOR

With 800 mm, this tine separator is one of the biggest on the market which offers more separation. For the 2019 season we designed the Tangential Plus concave underneath with up to 10% more performance.





**“THE BOOSTER BAR  
WAS ABSOLUTELY  
SUFFICIENT TO GET THE  
EARS OFF IN BARLEY –  
EXCELLENT!”  
(PROFI 03.2018)**

### **UP TO 10% MORE PERFORMANCE IN BARLEY WITH THE BOOSTERBAR**

The quick engage rasp bar ensures even more intensive threshing. The BoosterBar has been placed closer to the cylinder to produce more friction. It's especially effective for threshing damp or difficult to thresh crops such as barley or bearded wheat. Even better, it doesn't waste your valuable separation surface – as the BoosterBar doesn't minimise your concave surface. This makes it a real alternative to the existing deawning plates and should be the first choice in difficult threshing conditions.

### **SIMPLE ADJUSTMENT OF THE CYLINDER CONCAVE**

The electrically adjustable concave is easily set from the cab. The large cylinder always ensures the optimum distance between the concave and the drum.

### **MINIMISE STRAW DAMAGE WITH THE OVERSHOT BEATER**

The harvested crops are directed smoothly over the overshot beater into the tine separator. This means there's less strain and less damage to both the straw and the grain.

### **THE DISCHARGE BEATER**

This 400 mm cylinder separates the grains from the straw once again and guides the harvested crop reliably onto the walkers.

### **EXTENSIVE WALKER**

The 7-step walker has been extended and its geometry has been modified so that any remaining grains can be separated from the straw. No extra technology, even in uphill or downhill situations, is required thanks to the large dimensions of the threshing and separating components.



# NEW: SECTIONAL CONCAVE

## LIGHTNING FAST CROP CONVERSION

Like many of our good ideas, this one came from you. After several of our customers reported significant performance increases with different concave configurations – we took that a step further and developed the new sectional concave: Finally, changing concaves is as easy as on a rotary combine.



### SMART FLEXIBILITY

In the front of the main threshing concave two removable concave parts are mounted which cover the initial area of the concave, and for which three concave types are available – small grain, universal and round bar inserts. The second part of the concave consists of a fixed universal concave grid which covers the remaining area.

### FAST CONVERSION

Exchanging the inserts takes only 15 min thanks to the easy access through the stone trap. The booster bar can stay in place with its full functionality as the inserts slide over it and into place. This means the conversion can take place when necessary, so that compromises on performance or grain quality become a thing of the past.

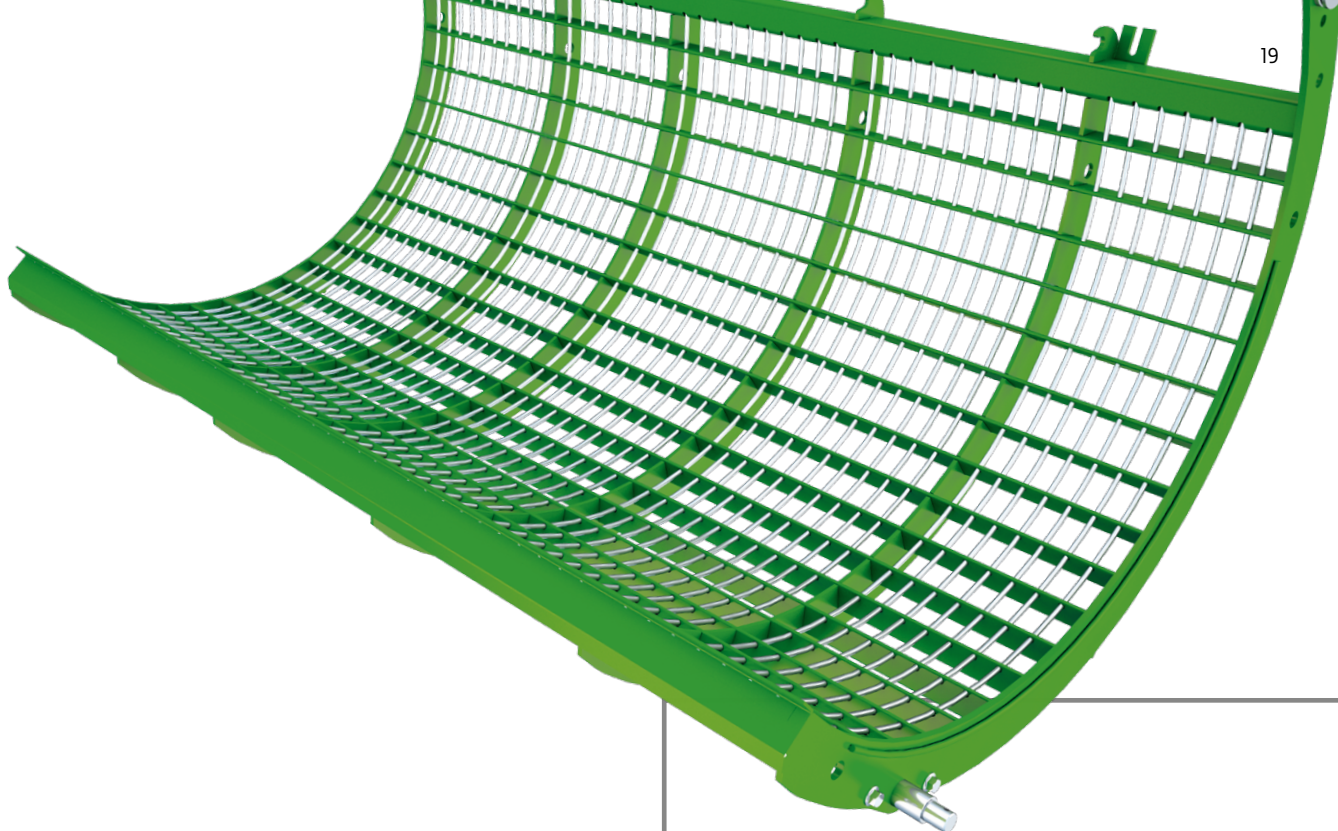
### ALWAYS READY

Convenient storage underneath the feeder house allows the combine operator to carry the two inserts which are not needed at all times, with quick and easy access as required.

### TOP PERFORMANCE

Field tests have shown that exchanging the concaves is worth the effort: Moving from the universal section concave to small grain concave in tough threshing conditions delivers up to 12% more performance. The universal concave is the best solution for grain which is easy to thresh but requires more separation capacity. Finally, the round bar inserts minimize the amount of cracked kernels in corn, beans and sunflower while maximising performance.





## PLUS IS MORE

After enlarging the active separation area back in 2015, we're taking performance to the next level while delivering top straw quality and lowering fuel consumption. You're going to like everything about Tangential Plus.

"During multiple field tests with independent German institutes in multiple crops and conditions, we observed, especially in tough conditions, a performance increase of up to 10% in small grain."

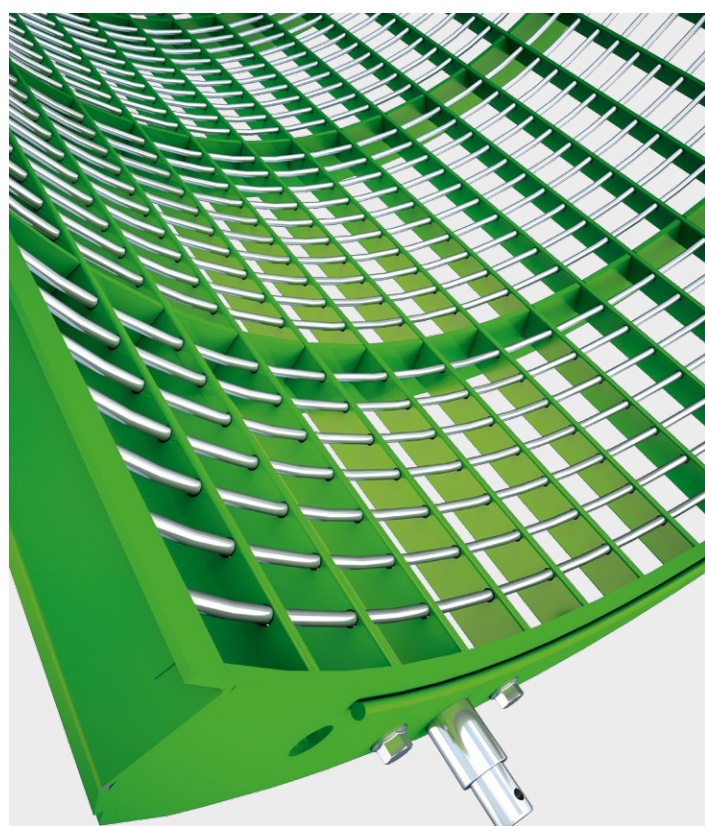
FRITZ LAUER, FACTORY ENGINEERING  
TEAM ZWEIBRÜCKEN, GERMANY

### TANGENTIAL PLUS

A patented rear separator grate for the T-Series which features 14% more openings in the separator grid and a fully rounded profile on the wires and the cross bars. This creates a better separation effect thanks to a faster, unobstructed crop flow over the grid, with a thinner layer of material thickness which boosts the separation of kernels trapped in straw.

### UNDERSTANDING WHAT MATTERS

Two key points emerged from analysing the crop flow inside the combine under different conditions with different straw volumes: The centrifugal force, together with the size of the grids, are key points for achieving high separation, and a smooth separation grid surface ensures good straw quality and high material speed.

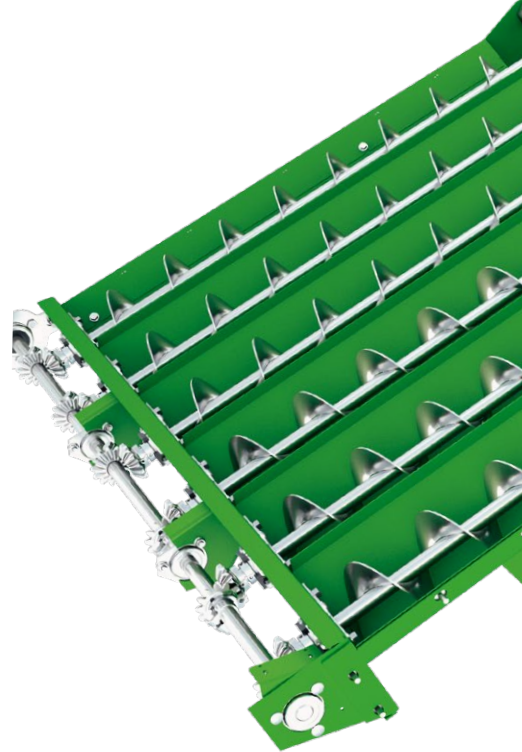


# POWER CLEANING

## DESIGNED FOR HIGHEST CAPACITY

How can you considerably enlarge the sieve surface without adding any weight and reducing the oscillating weight? The developers at John Deere found a brilliant answer to that question back in 2015.

The result: 41% more sieve surface and less weight at the same time. This was possible through an innovative, lightweight design and an aluminium structure resulting in reduced weight, which reduces peak engine loads and cuts down on vibration. This means the harvested crop stays on the sieves longer, maximising cleaning time and minimising losses. The T-Series is designed for the highest capacity. The 5-walker combine has a total sieve area of 5.20 m<sup>2</sup> and the 6-walker, 6.30 m<sup>2</sup> according to ISO Norm 6689: 1997.



### 1 | EFFECTIVE HIGH PERFORMANCE SIEVE

High performance sieves prevent short straw falling through the grid as they are equipped with special "noses".

### 2 | SIMPLE ADAPTION FROM SMALL GRAIN TO GRASS

With its 2 speed fan drive, the cleaning fan can be converted from crop to grass in a matter of minutes. Simply adjust the belt instead of having to swap the pulley.

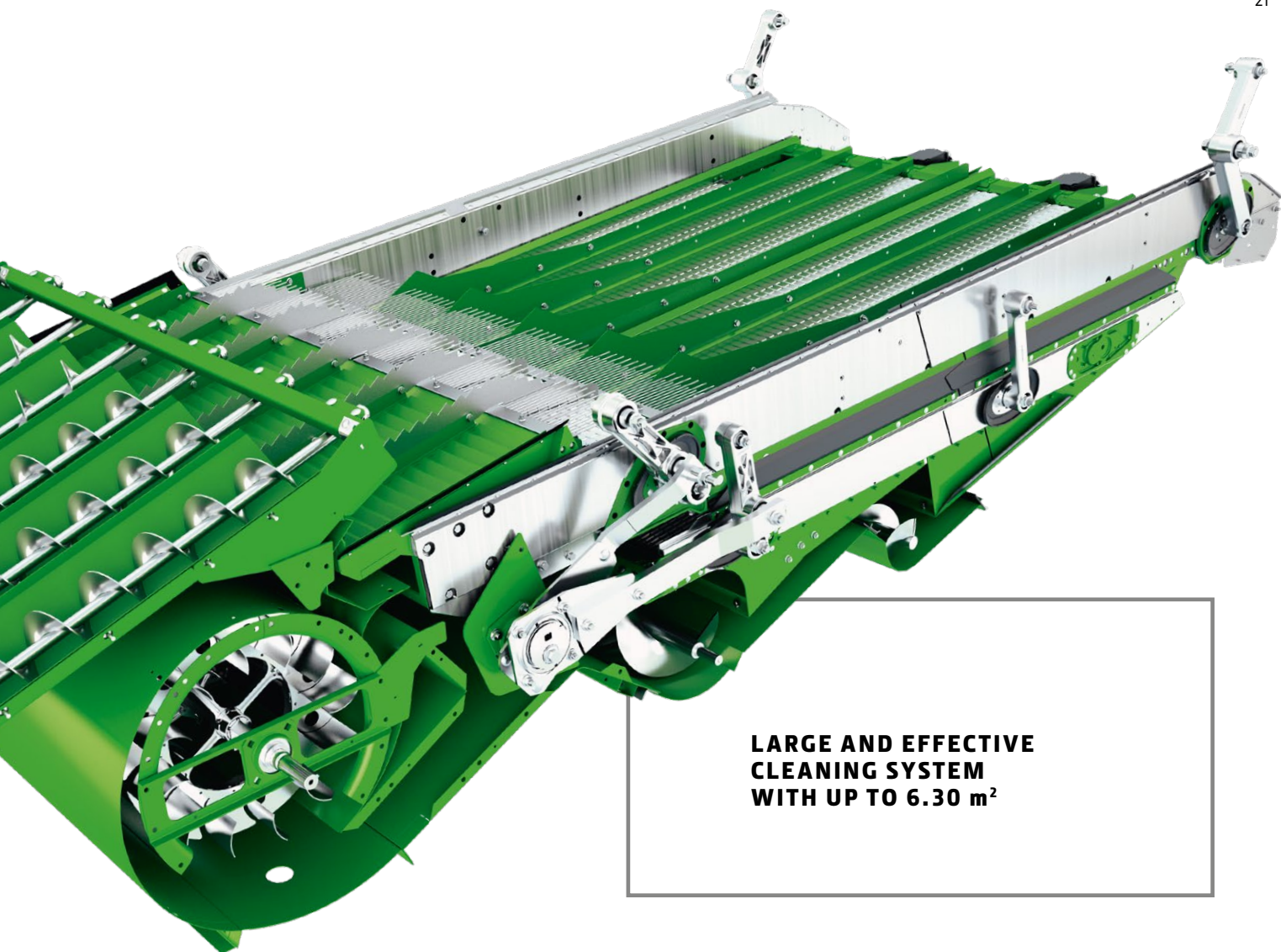
### 3 | DESIGNED FOR HIGH YIELDS

The returns are guided back to the cylinder and distributed evenly over its entire width by an auger. The amount of material is recorded and then displayed in the cab via the electronic sensors. To visually inspect the content of the tailings returns, there is an inspection flap just outside the cab door.

### 4 | INNOVATIVE FAN DESIGN

The completely redesigned fan delivers up to 740 m<sup>3</sup> of air per minute and was designed to evenly distribute this air over the entire width. Excessive suction on the side is minimised through targeted sealing of the openings, while more air is taken in through air ducts in the centre. The large air volume paired with the air flow and the large sieve area makes additional slope compensating features obsolete.





**LARGE AND EFFECTIVE  
CLEANING SYSTEM  
WITH UP TO 6.30 m<sup>2</sup>**

## 5 | VENTILATED STEPS

One non-ventilated step plus two ventilated steps cascade the crop in total 41 cm down to ensure the effective pre-cleaning of chaff. Through intensive testing we have found the right balance between air pressure and air volume. This provides the perfect preseparation effect and evenly divides the material between the front and rear part of the chaffer.

## 6 | NO ADJUSTMENT REQUIRED

Through intensive testing, we have developed a completely new combine cleaning system which is resistant to adjustment errors. For optimum results in changeable conditions, it does not need to be constantly readjusted, making life considerably easier for the operator.

## 7 | CONVEYOR AUGERS

The heavy duty conveyor augers ensure active crop flow on slopes and under tough harvest conditions, meaning the cleaning shoe can be optimally loaded even in damp or sticky conditions.

## 8 | EASY REMOVAL

The new sieves are provided with mounts that can be installed and removed in a matter of minutes. Access over the new rear axle is easier than ever.

## 9 | 6.30 m<sup>2</sup>: ONE OF THE LARGEST CLEANING SHOE AREAS ON THE MARKET

The sieve, with its considerably enlarged surface, offers high cleaning performance even under severe conditions.

# GENTLE SLOPES

## SIDE HILL PERFORMANCE PACKAGE

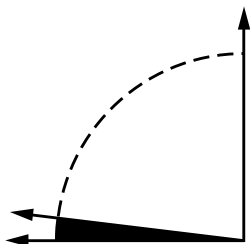
The secret to a stable hillside performance is the new DynaFloPlus cleaning shoe. It all starts with the conveying augers which move the material evenly onto the cleaning shoe. There's no chance of it sliding down or moving to one side.

### SLOPES OF UP TO 7%

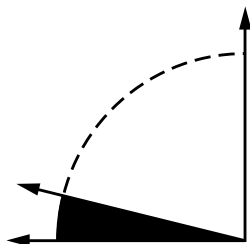
Once the material reaches the cleaning shoe, the real innovation shows. The whole shoe is longer than before and also longer than comparable concepts from other brands. This means the crop stays longer on the chaffer and sieve. The longer it stays, the more time it has to be separated and the less chance of it going out the back of the combine which reduces losses. This technology enables coverage on slopes of up to 7%.

### SIDE HILL PERFORMANCE PACKAGE FOR SLOPES UP TO 14%

The side hill performance package contains chaffer dividers, grain agitators and grain pan diverters. These prevent grain from accumulating to one side and help distribute it over the full width of the chaffer. The agitators actively move grain uphill with every stroke while the dividers and diverters prevent grain from moving downhill on side slopes. Together, with the in-base technology at the cleaning shoe, you can be confident of harvesting on slopes of up to 14% without any compromises or grain losses. This simple and reliable solution has no moving parts either, so it's maintenance and wear free.



SLOPES UP TO 7%



SLOPES UP TO 14%





100%  
PRODUCTIVITY  
ON SLOPES OF  
UP TO

22%

# STEEP SLOPES

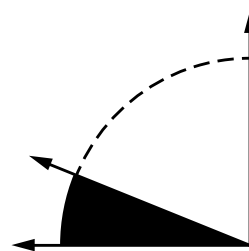
## THE HILLMASTER COMBINE

### 22% SLOPE COMPENSATION WITH HILLMASTER

We don't like compromises and we know the physical limits. That's why we offer Hillmaster for the T-Series, simply because it is the best solution for steep slopes. The Hillmaster system not only adjusts the chaffer and the cleaning shoe, it levels the whole combine from the feederhouse to the chopper.

This means the whole crop flow behaves exactly as if the combine was harvesting on level ground. The grain tank also stays level which gives you the added benefit of being able to carry a full load even on slopes, saving additional unloading stops. HillMaster won't just be appreciated when it comes to measuring your yields either. It's a lot more comfortable for the operator too.

HillMaster also has the added benefit of keeping the weight distribution even. Without it the wheels on the downhill side of the combine would experience more load which would increase soil compaction. By levelling the whole body of the combine, HillMaster shifts the centre of gravity so there's even ground pressure across all four wheels. This also ensures that the combine has better traction and stability on slopes. An important consideration in unstable or wet soils.



SLOPES UP TO 22%





---

**PROFI  
03.2018**

---

**"THE GRAIN  
TANK HOLDS  
A TRUE 10 m<sup>3</sup>  
AND IS EMPTIED  
IN LESS THAN  
1.5 min. –  
VERY GOOD!"**

---

# SPEED IS MONEY

## UNLOAD IN RECORD TIME

The T-Series helps you save valuable time even with unloading. A great feature in this class, the 11,000 l capacity grain tank can be unloaded in record time: up to 125 l/sec. The large diameter unloading auger turns with low rpms and is therefore gentle on grains. The focus here is on grain quality and making unloading on-the-go as easy as possible.





### **SPACE-SAVING FOLD**

The folding unloading auger offers the possibility to store the combine in the barn using less space.



### **HIGHER VISIBILITY**

The optional wireless camera kit transmits the image to the monitor of the tractor operating nearby.



### **ON-THE-GO UNLOADING**

The electronic engine management provides up to 25 kW/34 hp extra performance during unloading while driving, so you can continue harvesting with full power.

## **COMPLETE HARVESTING EXPERIENCE**

The large diameter unloading auger turns at low rpm and doesn't damage the grain so much during unloading. The cross auger cover plate for the grain tank can be adjusted without tools, so the unload rate can be altered quickly for differing crops. Visibility is excellent too. With a large rear window, you always have a clear view into the illuminated grain tank and you can always take a sample from next to the cab. The optional Harvest Monitoring and Documentation system accurately measures yield and moisture via sensors. Relevant data is displayed in the cab and can be recorded on the optional GreenStar 2630 Display and can be transferred to the Operations Center on MyJohnDeere.com – either manually via a USB device or automatically via Wireless Data Transfer (WDT).

## **JOHN DEERE MACHINE SYNC: NON-STOP HARVESTING**

With John Deere Machine Sync, the combine operator can have the tractor with a trailer drive alongside the combine while unloading. Once in position, the combine operator can control the ground speed and steering of the tractor-trailer combination. Grain trailer operators can see the grain tank levels of several combines and can be "called" to empty the fullest tank. This saves time, diesel, and minimises soil compaction.

# IN LINE WITH YOUR REQUIREMENTS

## RESIDUE MANAGEMENT

Depending on the desired degree of chopping, you have a choice of two high performance solutions: The standard chopper Fine Cut and the premium version Extra Fine Cut.

Both models evenly distribute the residue behind the combine, even across the widest bouts – creating ideal conditions for subsequent field work. You can choose between smooth knives for greater fuel savings or serrated for optimum straw chop length. The Extra Fine Cut chopper's optional wind paddles ensure even straw distribution across the entire platform width. The low position of the chopper allows it to perform even in windy conditions, while its high blast speed eliminates the need for resource-intensive active spreading.



## IDEAL STRAW QUALITY

Thanks to the smooth, direct crop flow, you benefit from best-in-class straw quality. This means you can collect more straw per hectare and minimise losses due to minimal bends or abrupt changes in direction – allowing you to produce well formed, high density straw bales. Thanks to its adjustable straw rake, the T-Series produces light, airy and perfectly formed swaths.

“The straw dries up one day earlier compared to a hybrid combine” (Profi 03.2018)






---

**GREAT STRAW**

---

**MORE  
OF IT**

---

Smooth, direct crop flow for  
exceptional straw structure  
and more bales per hectare

### **CHOOSE THE FINE CUT OR THE EXTRA FINE CUT CHOPPER WITH A HIGHER NUMBER OF KNIVES**

- The Fine Cut und Extra Fine Cut chopper with 3400 rpm for excellent chopping quality and even spreading
- Ultra-simple conversion from windrowing to chopping mode
- Quick adjustable counter knife for setting the correct length of cut
- Adjustable rasp bar to regulate the level of straw damage
- Up to 2 speeds for all crop types
- Whether in chopping or windrowing mode, the chaff is always distributed through the chaff spreader and never through the chopper

“The chopper has 88 knives in 6 rows which almost pulverizes the straw. We were absolutely happy with the chopping quality and spread width with the 7.50 m wide header” (Profi 03.2018)





"Thanks to the top speed of 40 km/h, I can increase my operating range by 32% – a great plus for me as a contract harvester."

CONTRACTOR FRANZ GROTE,  
WALTROP, GERMANY



Cruise between fields in comfort  
at 40 kmh





# SPEED WITH A PURPOSE

## TIME IS MONEY

Spend more time harvesting and less time travelling between fields. With its automatic ProDrive transmission, the new T-Series allows speeds of up to 40 km/h on roads – whether on wheels or tracks.

## OPTIMISED HYDRAULIC PUMPS AND ENGINES

provide more pulling power for the front and rear axles, while the new hydraulic power steering makes turning easy. The intelligent engine speed management system reduces the engine speed on roads, saving fuel. And the overall width (including 610 mm tracks) is a slim 3.50 m for the 6-walker and just 3.30 m for the 5-walker.

Maximum traction meets  
minimal width



# ULTIMATE TRACTION

## ULTIMATE SOIL PROTECTION

Whether on wet ground or on the road to the next field, the new T-Series tracks deliver a host of advantages. You benefit from a larger footprint, lighter ground pressure, excellent driving comfort, rapid road speeds and a slimmer transport width.

T560 with narrow-tracks, four wheel drive and a top speed of 40 km/h: the ideal machine for contract harvesters, it's prepared for any challenge.

## CHOOSE YOUR TRANSMISSION

Chose from different types of transmissions to suit your individual needs. The simple and reliable mechanical 3-speed solution for those spending most time in the field, the electric 3-speed for those who travel on the road more often and our infinitely variable hydro-mechanical ProDrive transmission for the ultimate in comfort and pulling performance. Our electric 3-gear transmission and the electric park brake make changing gears child's play. Gears are changed via easy to use buttons on the CommandARM console.

## EFFICIENT PRODRIVE AUTOMATIC TRANSMISSION

For the utmost efficiency on all terrains, the ProDrive transmission is the perfect answer, putting an end to shifting on hills or on headland. The Infinitely Variable Transmission automatically shifts between gears while you continue to harvest at a constant speed. Increased torque and the manual differential lock ensure top performance in challenging conditions.

"You get the best combine drive system we ever tested! – The traction is amazing" (Profi 03.2018)

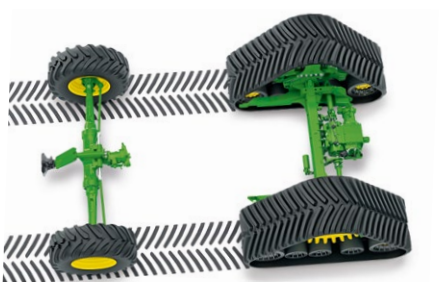






## FIELD-FRIENDLY HIGH FLOTATION TYRES

With their increased footprint, these tyres reduce ground compaction without increasing transport width. The new 680/75 R38 tyres also offer superior ride comfort and stability.



## FOUR-WHEEL DRIVE WITH TRACTION CONTROL

A John Deere exclusive, traction is controlled automatically, ensuring stability even in the toughest of conditions. Thanks to this concept, even bad weather can't stop you from bringing in your crop.



## T560 WITH TRACKS, FOUR-WHEEL DRIVE AND A TOP SPEED OF 40 KM/H

This combine is designed to maximise your time in the field. It harvests like a 6-walker, minimises road travel times with speeds of up to 40 km/h, effortlessly navigates narrow passages with its slimline 3.30 m width – and thanks to its tracks, traction control and differential lock, it keeps going where others give up.





# LARGE FOOTPRINT

## HIGH EFFICIENCY TRACKS

Everyone knows tracks are better than tyres when it comes to unstable ground and muddy conditions, but tracks don't win in every situation. Until now.

John Deere Tracks keep you harvesting thanks to our unique new design. What's more, the extra large footprint reduces soil compaction and avoids the need for deep tillage, saving costs all year round.



You don't have to take our word for the superiority of these new tracks either. In customer tests against a leading competitor, the new track design scored substantially higher ratings on all key criteria: ride quality, noise and vibration.





We've completely rethought the whole concept of tracks from the ground up. The new design represents a leap in performance in every area:

- 20% more comfort and a smoother ride
- 30% larger footprint for less compaction
- 50% less belt wear for lower cost of operation
- Choice of 3 track widths for different conditions
- 3.49 m minimum combine width for narrow roads
- No daily maintenance for more uptime
- Up to 40 km/h transport speed



# NEW DESIGN

## EXCELLENT PERFORMANCE

Our new design retains all the benefits of our previous tracks: retrofitability, hydraulic suspension, 5 contact point technology, positive drive with triangular profile and ‘climb out of mud effect’. The rest? All new!



TRACK WIDTH/INCH (MM)	TRANSPORT WIDTH (M)/SURFACE AREA PER ONE TRACK UNIT (M²)	
	T560	T660/670
24 inch (610 mm)	3.29 / 1.23	3.49 / 1.23
30 inch (760 mm)	3.49 / 1.54	3.79 / 1.54

### 1 | ALL-TERRAIN CAPABILITY. EXCEPTIONAL RIDE QUALITY

The triangular design provides good ground clearance and has excellent self-climbing properties in unstable ground. The 5 pivot point design, with small distances between the pivot points and rollers, ensure the tracks tightly follow the ground for better grip. Another advantage is significantly reduced vibration for better ride quality.

### 2 | BIGGER FOOTPRINT. NARROWER WIDTH

The tracks are longer compared to our previous design and to that of the majority of our competitors. This puts more tread on the ground for better grip, lower soil compaction and improved fuel economy compared to wheeled machines. The footprint of our 24 inch tracks is comparable, in many cases, to 29 inch wide competitive tracks, but with the added advantage of narrower transport width.







### **3 | CONTROLLED TRAFFIC FARMING READY**

The 3 m centre to centre tread width reduces the amount of tracks in the field and long-term soil damage.

### **4 | SINGLE PIECE MOULDED. ADDED STRENGTH**

Instead of bonding the tread mouldings to the belt, the new tracks are moulded as a single piece with a 4 layer steel core for added strength and better heat dissipation.

### **5 | EXCEPTIONAL GRIP. LONG LIFE**

The track treads are designed with a higher profile for longer wear life. The deep pattern also provides greater grip. Tests show the pattern reduces friction with less heat generated which reduces wear by as much as 50% compared to previous John Deere tracks.

### **6 | EASY SWITCHING. LOWER COSTS**

It makes sense to use tracks during wet harvesting periods, but when its dry you can switch to wheels and reduce your running costs. Some customers even choose to sell their combine with wheels and keep the tracks for their new combine.

### **7 | ULTRA TOUGH TREAD. SELF-LUBRICATING PROPERTIES**

The mid-rollers are made from IPX 2000, an ultra-high-molecular-weight polyethylene. IPX has very low moisture absorption, is highly resistant to wear and self-lubricating.

### **8 | SEALED COMPONENTS. ZERO MAINTENANCE**

Apart from being incredibly tough, another advantage of IPX 2000 are its self-lubricating properties which reduce wear and tear. Sealed gearboxes and bearings also remove the need for regular greasing. All that's needed is an oil change every 500 hours.

# SMART MUSCLE

**MORE POWER, MORE COST EFFECTIVENESS,  
MORE THROUGHPUT**

The John Deere PowerTech engines used in the T-Series deliver even more power while offering unsurpassed fuel efficiency for diesel and diesel exhaust fluid (DEF). At the same time, they fulfil strict Tier V emission regulations.

## **ENGINE SPEED MANAGEMENT**

The optional engine speed management improves the fuel efficiency by reducing the engine RPM from 2,200 to 1,600 revolutions during on-road travel and to 1,200 revolutions when the machine is standing (such as at traffic lights).

## **DIESEL PARTICLE FILTER**

The filter regenerates itself automatically and works in tandem with the diesel oxidation catalyst to ensure clean air. The entire system is encapsulated within a separate housing and is completely segregated from its surroundings by means of overpressure.

## **JOHN DEERE POWERTECH ENGINES**

The PowerTech engines from John Deere offer consistent performance for uniform engine speeds and deliver extra power during grain tank unloading.

## **A POWER BOOST FOR AGRICULTURE. MADE BY JOHN DEERE.**

John Deere is the only manufacturer of agricultural machines to develop and produce its own engines. This delivers clear benefits, as agricultural machines and on-road vehicles have completely different requirements. Whereas lorry engines are designed for travel at variable engine speeds, John Deere engines feature heavier duty housings and bearings – designed for running at rated speed all day while still being able to cope with abruptly changing conditions during harvest.

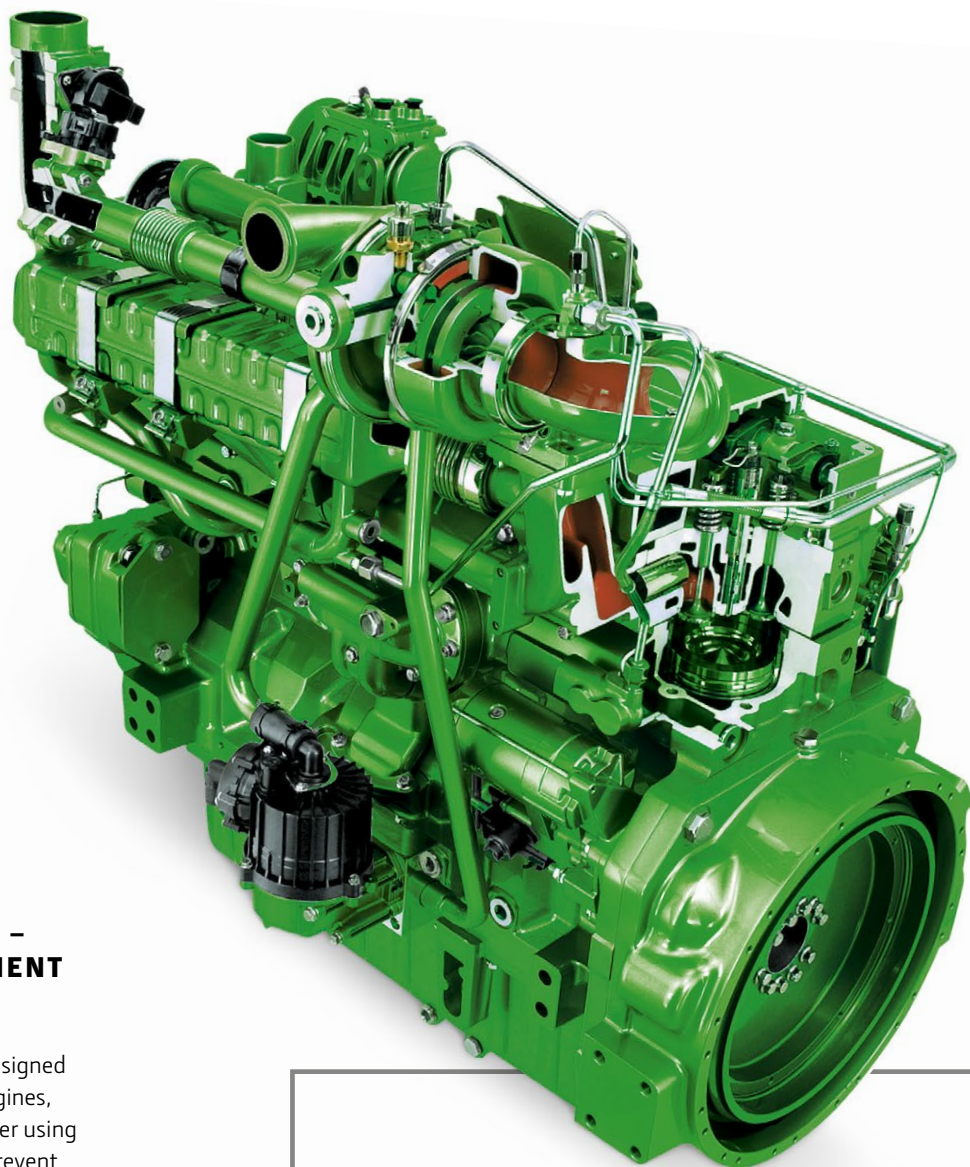
## **ENHANCED COOLING**

The cooling packs are large enough to get you through hot harvest days and aren't bogged down with an overly complex design. Their position next to the engine allows unobstructed air circulation around the engine and prevents dust and dirt from settling in the corners. The slim size and low flow rate of the cooling package effectively prevent it from clogging.

## **DRIVETRAIN DESIGNED FOR THE UTMOST RELIABILITY**

As standard, the T-Series comes equipped with discs instead of belt clutches. It engages gears in a highly controlled fashion, keeping the belt from "squeaking" when the machine is turned on and increasing its operating life. The drum's high flywheel mass ensures extremely even load distribution, preserving the drivetrain. The variable Posi-Torq drives automatically tension the drive belt and prevent it from slipping.





## JOHN DEERE FILTERS – THE HEART OF EFFICIENT PERFORMANCE!

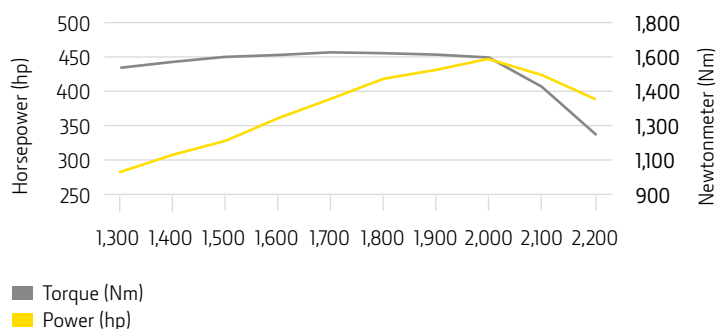
John Deere Filters have been designed specifically to work with our engines, we strongly recommend only ever using genuine John Deere Filters to prevent harmful particles entering the engine while also reducing fuel consumption.

## PROTECTING THE EQUIPMENT YOU DEPEND ON!

John Deere lubricants ensure your machine runs how it was designed to. Every lubricant we offer is approved by our expert engineers and designed to specifically meet heavy duty agricultural requirements. Plus-50 II engine oil, for example, is the only approved oil for John Deere engines with extended drain intervals of up to 500 hours in Stage IV engines.

"The Powertech engine was always able to deliver up to requirements, even in hilly conditions. The fuel consumption the aggregate took, depending on the conditions, was between 12 and 24 l/ha out of the large 800 l fuel tank – that fits" (Profi 03.2018)

### T670 WITH JOHN DEERE 9.0 L POWERTECH PSS ENGINE (STAGE V)









# COMFORT THAT GETS THE JOB DONE

## A MORE EFFICIENT AND RELAXING WAY TO WORK

Welcome to one of the most productive and comfortable places to work. With just 71 dB(A) the Premium Cab version is one of the quietest in the industry. The T-Series' spacious cab has a total size of 3.30 m<sup>3</sup>. It is loaded with a host of smart details to help you perform at your best while keeping you relaxed, even on long working days and under the toughest of harvesting conditions. And thanks to the tinted glass around the entire cab, the slimline cornerpost and highly ergonomic control elements, you always have a clear view – and are always in control.



### A GREAT VIEW

The cab was designed specifically for combines – with a total of 5.9 m<sup>2</sup> of glass in the front and to the sides, it provides an excellent view everywhere you need it – such as when unloading the grain tank.



### LEATHER PACKAGE FOR GREATER COMFORT

For extra comfort, a leather air suspension seat is available as an option. Even better, the hard wearing leather seat is air-cooled, making even the longest of harvesting days easier. A leather-covered steering wheel providing a solid grip is also available.



### ROOMY INSTRUCTOR SEAT AND REFRIGERATOR

We define comfort down to the detail even when it comes to the refrigerator. Plenty of space with an impressive 37 l interior – perfect for storing large bottles in an upright position or a larger lunch box for a long working day.

# THE PRODUCTIVITY EXPERIENCE

## EVERYTHING IN ITS PLACE

Our secret recipe for perfectly intuitive operation? The perfect balance between direct-access functions on the armrest and functions operated via a touchscreen monitor. This ensures that both seasoned John Deere operators, and drivers more familiar with other brands, can find their way around the features quickly and effortlessly.

### INFORMATION AND CONTROL CENTRE

The GreenStar 2630 display delivers much more than touchscreen operation and a brilliant 26 cm colour display: It also supports documentation of key harvest data and allows you to transfer it into the John Deere Operations Center via a USB stick or wirelessly over your mobile data connection. The display can swivel and be moved out of the way in case you want to improve the view e.g. to the header.

### FULL CONTROL IN THE PALM OF YOUR HAND

The ergonomic MasterControl lever provides remarkably smooth hydrostatic speed control and enables you to operate a host of other functions such as the in/out swing of the unloading auger, feederhouse raise/lower, reel raise/lower and reel fore/aft, AutoTrac activation and the control of header functions e.g. for the 600X variable header or the 700D / FD draper headers or the pickup.

### BLUETOOTH CONNECTIVITY

Whether you're coordinating logistics processes via your smartphone during harvesting, consulting with your dealer on the best settings, navigating to the next field with the help of your tablet or playing your favourite music from your MP3 player – with Bluetooth, you're always well connected as you can access the data on your smartphone via the combine display.





## GREENSTAR 3 COMMANDCENTER

Even in its base version, the GreenStar 3 CommandCenter display enables numerous settings. This includes automatic basic machine settings, Interactive Combine Adjust (ICA), Harvest Monitor crop and moisture monitoring features, the Harvest Smart feedrate control, AutoTrac or AutoTrac RowSense automatic steering in small grain or corn. It is possible to connect an external camera.



- |  |  |
|--|--|
| 1   Quick Stop Button  | 15   Header height control, flex header pressure control   |
| 2   AutoTrac   | Adjustment of reel speed to driving speed  |
| 3   Header Resume  | 16   Short cut buttons for all relevant cylinder, chaffer/sieve and chopper settings   |
| 4   Header Float   | 17   Short cut buttons for monitor menus on GreenStar 3 2630 Display   |
| 5   Header height/tilt manual control  | 18   Differential lock (on ProDrive transmission), four-wheel drive speed (slow/fast) for non-ProDrive (with ProDrive, the speed of the four-wheel axle is automatically adjusted) |
| 6   Reel up/down – fore/aft  | 19   Automatic Air Conditioning Controls   |
| 7   Unloading auger swing in/out   | 20   Control buttons for HillMaster side hill slope compensation system  |
| 8   Unloading auger on/off   | 21   Beacon light control (field, road, grain tank modus)  |
| 9   MachineSync and header controls (table in/out or belt speed)   |  |
| 10   Activation of Harvest Smart automatic speed management function   |  |
| 11   Engine speed, electric park brake, gears. With ProDrive transmission switching between two pre-set speeds |  |
| 12   Road safety switch, hot keys for fold away functions (grain tank, unloading auger, corn header)           |  |
| 13   Radio and Bluetooth controls  |  |
| 14   Header drive incl. reverser and threshing cylinder  |  |

UP TO

**20%**

Better utilization, on average,  
of the installed capacity\*\*\*

# CONNECTED COMBINE

## YOUR TECHNOLOGY ADVANTAGE.

John Deere is committed to setting new standards in connected agriculture – because we believe this offers tremendous potential to boost productivity, save valuable time and lower costs.

We have identified the best technologies currently available on the combine market and brought them together into attractive packages:

- AutoTrac automatic steering
- 5 year connected customer support
- Wireless Data Transfer to Operations Center
- Interactive Combine Adjust
- FarmSight Service Packages

## AUTOTRAC AUTOMATIC STEERING SYSTEM

AutoTrac steering system reliably steers your combine from day to night, through dust or on hilly terrain. This prevents costly overlaps or gaps and enables every operator to harvest at peak performance. You can expect up to 8\* percent input savings and up to 14\*\* percent productivity increase.

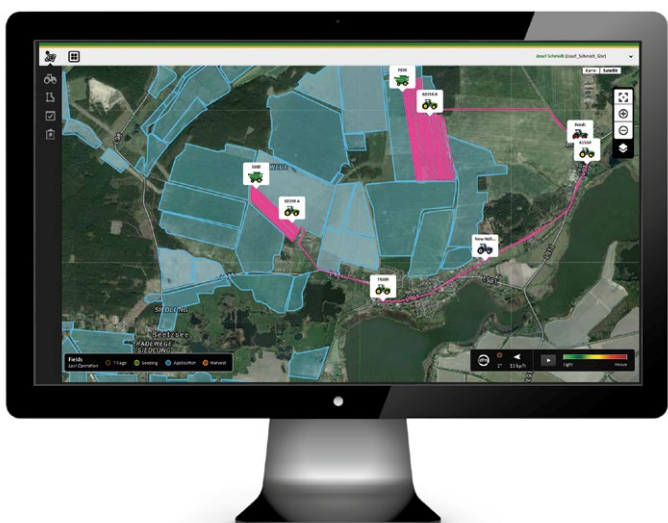
## CONNECTED CUSTOMER SUPPORT

Leveraging the machine-to-office connectivity, your John Deere dealer can (with your permission) maximise machine uptime. For example, he can remotely check machine health and identify potential issues before they actually stop you from working. With Remote Display Access you or your dealer have a live connection from the office to the GreenStar 2630 on the combine to assist the operator with machine setup and operation – without the need to drive out to the field.



\* From 'Lohnunternehmen' 1/2010  
 \*\* From 'Landtechnik' 6/2006  
 \*\*\* From 'dlz agrarmagazin' 6/2017





## OPERATIONS CENTER CONNECTIVITY

The Operations Center on MyJohnDeere.com is the hub of all your data. Store field locations, track the progress of your machines, assign work orders to your operators, view yield and moisture maps as well as create, analyse and share harvest reports with trusted advisors and customers. What's more, you can access it from any internet enabled device.



# PRECISION HARVESTING

## ACHIEVE MORE WITH LESS EFFORT

### AUTOTRAC: AUTOMATIC STEERING FOR GREATER PRECISION

With our satellite-based hands-free AutoTrac system, every pass matches the full cutting width of your platform. This helps you save time and fuel and boost your combine performance – even at night, in dusty conditions, on hillside terrain and even after long hours of operation. The automatic steering relieves your operators and allows them to concentrate on their yield. When working with multiple machines in a field, the AutoTrac guidance lines can be shared from one machine to another so that all combines can harvest at the full cutting width. They can also be shared with the tractor or grain trailer operator so the machines can drive exactly parallel to each other during unloading. AutoTrac RowSense adds even more comfort and productivity to corn harvest. It merges GPS based automatic steering and row guidance – leveraging row feelers on the header – to increase harvesting speed. When row feeler information is not available, for example in down crop situations the GPS signal takes over.

### INTERACTIVE COMBINE ADJUST (ICA)

With ICA you can increase the performance of your combine, minimise losses, avoid grain damage and improve the quality of your straw. You can either optimise all parameters at the same time or focus on one in particular.

### AUTOMATIC COMBINE ADJUST (ACA)

Standard on all models within the Series, Automatic Combine Adjust helps you effortlessly transition between crop types. By using standard John Deere values and retrieving data on your current threshing and separating conditions, it automatically adapts your machine to optimise its performance. You can then use these proposed values or modify and save them for later use.

### HARVESTSMART: ALWAYS THE RIGHT SPEED

The HarvestSmart system automatically adapts the speed of the combine to maximise capacity or minimise losses with the highest output. Sensors on the threshing cylinder, the engine and the dedicated loss sensors control the system with the goal of minimising losses or maximising the throughput rate.



Interactive Combine Adjust increase the performance of your combine.







## STARFIRE 6000 RECEIVER

Accessing John Deere's precision farming solutions starts with the StarFire 6000 receiver. Capabilities include better signal stability for maximum uptime and SF3 accuracy delivering in-season repeatability. For you that means: the receiver always keeps you on track whatever the conditions. And with the StarFire 6000 receiver you get repeatable results – no guidance line or boundary drift – throughout one season. Which adds even more precision and productivity. The StarFire 6000 receiver works seamlessly with all John Deere guidance systems and all accuracy levels (SF1, SF3, Mobile and Radio RTK).

## TOP-OF-THE LINE PRECISION

The StarFire 6000 receiver truly enables precision productivity. You can choose from the following accuracy levels:

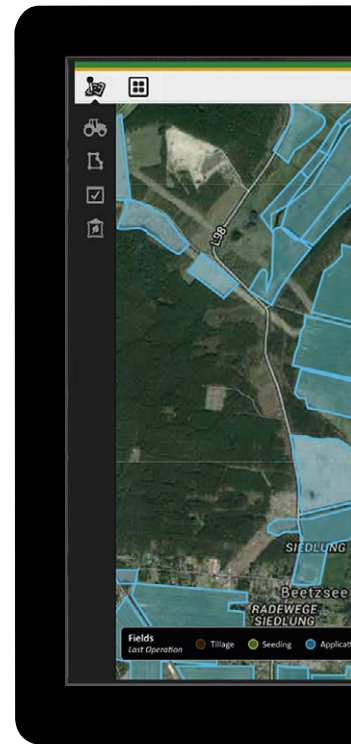
- Improved SF1 with 15 cm pass-to-pass accuracy, free of charge.
- SF3 enabling 3 cm pass-to-pass accuracy and in-season repeatability.
- RTK with 2.5 cm pass-to-pass accuracy, featuring long-term repeatability including 14 days RTK Extend if you lose line of sight. The ideal solution for Controlled Traffic Farming.

# A SINGLE VIEW OF YOUR BUSINESS

## EXCELLENT PERFORMANCE

You need to coordinate your fields, your machines, your operators and make sure all your documentation is in order. Organising your entire business is a daily challenge and a lot of stress.

Thanks to our connected farm management solutions we make it much easier every day for thousands of farmers worldwide. Our developers are constantly making improvements and adding new services so you'll be able to access even more functionality in the future.



## CONNECTED TO YOUR MACHINE

JDLink is the secret to your combine's connectivity. It enables the connection between you, your machine and your office. You want to know where your machines are currently working and how they are performing? You want to see machine alerts in time to ensure machine health for the harvesting period? Then go for JDLink Access + RDA or JDLink Connect.

JDLink Access lets you view machine locations and monitor performance such as fuel consumption and machine utilisation (idling, working and transport time). Through Remote Display Access you or e.g. your dealer can remotely assist your operators with machine setup and operation using a John Deere display.

JDLink Connect provides even more value in addition to the JDLink Access + RDA capabilities through Wireless Data Transfer (WDT), which allows seamless documentation and setup data exchange (e.g. yield data, moisture) between your machine and the office.

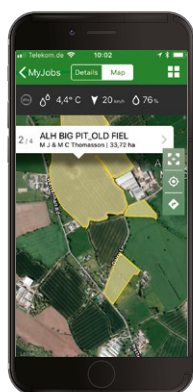
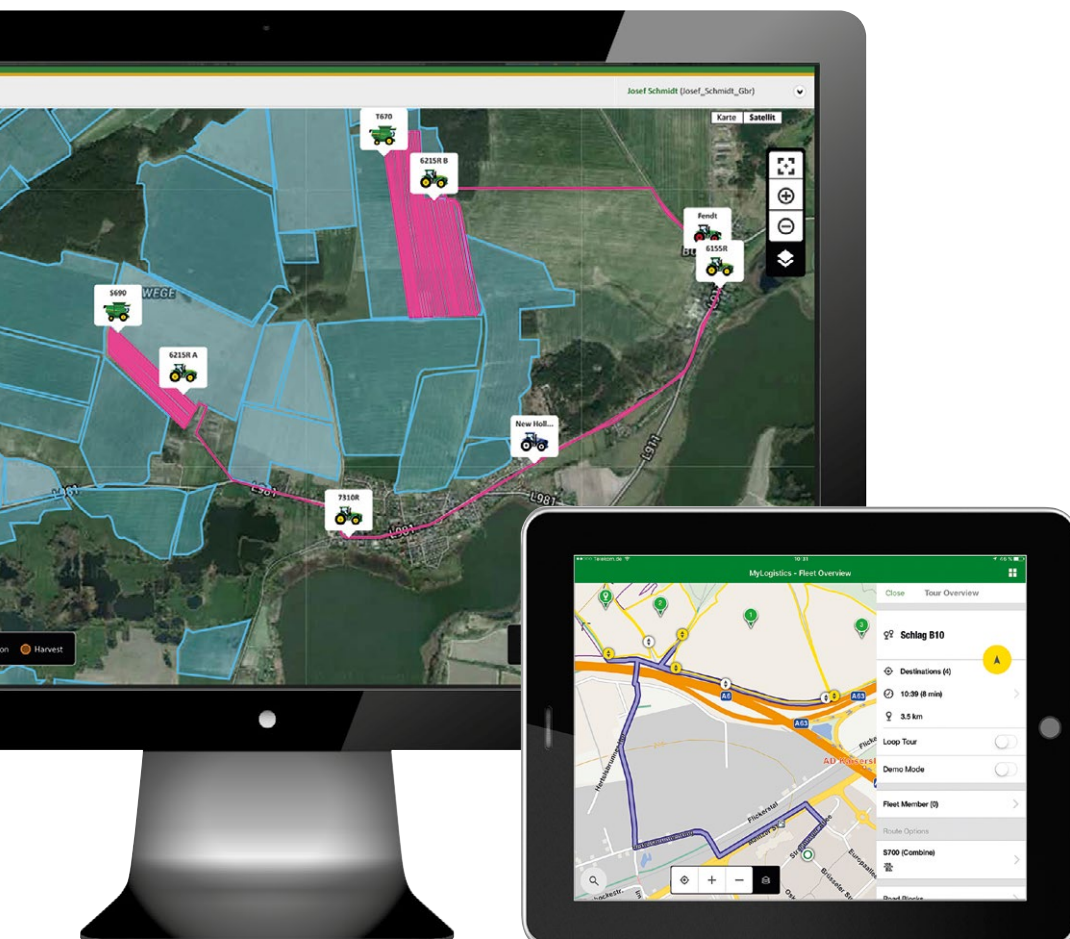
## CONNECTED TO YOUR FARM

The John Deere Operations Center on MyJohnDeere.com is the online platform for your entire operation. On one map you can get a complete overview of your fields, understand where your machines are and the progress of the operation.

Display setup information (e.g. field boundaries, guidance lines) can be prepared in the Operations Center and shared with your combine prior to the harvesting season, so you can save time in the field and ensure error-free documentation. The files can be sent wirelessly to your machines and will automatically pre-populate the Command Center 4600 display. There's no need for manual data transfer using USB drives or storage cards. Job done!

As soon as a field is harvested your documentation data is automatically uploaded to your personal Operations Center account. There you can view the results, analyse and compare different map layers and print out reports.





## MANAGE YOUR HARVESTING TEAM MORE EFFICIENTLY

Using MyJobConnect you can coordinate your harvesting operations better than ever before. There's no need for bits of paper, phone calls to different members of the team and magnetic boards in the office.

You'll find all your information is now in work order. Each member of your team knows what to do and has all the relevant information available: machine, customers, fields, settings, guidance lines and more. What's more, you can see the current status of your jobs and give your customers more precise time commitments and progress updates.

Stop searching for the right way to the right field. Start with your work immediately. MyJobConnect Premium adds an AG navigation system including secondary roads. With one click you get an optimised route to the field or the lead machine. Forget about unnecessary detours, the app takes into consideration road restrictions (e.g. width, height and weight) and calculates the best route.



# FARMSIGHT DEALER SERVICES UPTIME DELIVERED

## FOR COMBINES

You rely on your combine every second during season. You should, and you can – with FarmSight Service packages. We're committed to keeping you working without compromise. We continuously invest in technician training and the latest technology to support you as efficiently as possible. Our FarmSight Service packages have been designed with two goals in mind: maximise your uptime and minimise your cost of operation. See for yourself — unlock the full potential of your John Deere combine.

"Profit from efficiency gains and additional uptime hours from day one."

FARMSIGHT SERVICES EXPERT





# TAILORED TO YOUR NEEDS

The FarmSight Service package that suits you is provided by your local dealer. The services offered vary by dealer as they are adapted to local needs. Below are example service packages.

## ULTIMATE

Ultimate brings performance to a new level. Our combine specialist will individually set-up your combine year after year for unmatched performance. We remotely monitor your machine and alert the operator when we notice a malfunction.

## PREMIUM

Premium increases uptime and enhances performance. Remote machine monitoring will alert the operator to malfunctions, and expert support helps you maintain top machine performance.

## SELECT

Select gets you performance boosting support. Our parts promise to you: if a part cannot be delivered within 24 hours you'll get a drop-in back-up combine from us.

## UPTIME DELIVERED PERFORMANCE INCREASED

Every hour of downtime can lower the quality of your grain output – harvesting in time has a direct impact on your bottom line. And field studies show that you can achieve performance increases of up to 20% when an expert helps you fully utilise all installed tech on your combine. FarmSight Service packages pay off – ask your dealer to get yours!



# MORE FIELD TIME

## SERVICE AND MAINTENANCE MADE EASY

The T-Series doesn't just save you time in the field and on the road – but also on maintenance and cleaning. To make these tasks as simple and fast as possible, we always kept the operator in mind during the design process:

- No daily lubrication points.
- The practical removable ladder.
- Easy access to the engine and the cooling package.
- An air compressor with a 60 l reservoir and three connections around the combine and a 10 m hose and accessories so your machine can be cleaned comfortably.
- LED lights all around the machine for better night visibility.
- LED service lights for better visibility under the side panels and inside the cleaning shoe during routine checks.
- An oil gallery for the main engine gear case, engine and hydraulic oil to drain the oil from ground level.

No daily greasing – The T-Series makes daily maintenance intervals a thing of the past. Simply fuel up diesel and DEF at the conveniently located filler necks and your are ready to go.



Operator Package – Every combine comes with a free of charge package which helps the operator to do a better job. This includes a full set of John Deere branded merchandising items and clothes as well as a toolbox fully equipped with John Deere high quality tools. Please check the price list or your offer for more information.





“For the redesign of the frame and the side panels, we eliminated all corners to reduce cleaning work and added angles to all flat surfaces to prevent dust and dirt from collecting.”

VOLKER FUCHS,  
ENGINEERING ZWEIBRÜCKEN



The GoHarvest app makes setting up easier as it suggests initial settings for the specific crop type. It also documents changes made to settings during harvest and the Seed Loss Calculator helps reduce losses.

## SHORT CONVERSION TIMES BETWEEN CROPS

- Mounting and unmounting the sieve takes just a few minutes. The deawning plates can be swung in and out with a lever and the separator concave under the second cylinder can be easily adjusted from one side with two levers.
- Converting the fan speed to grass (optional) takes only minutes, since no pulleys need to be changed – swap the belt between two pulleys and you're done!
- The cover plate for the grain tank cross augers can be adjusted without tools.
- Converting from barley to rapeseed with the T-Series and the 600X header takes less than 3 minutes. Changing the concave section under the main threshing concave is a matter of less than 15 minutes.

## TURN NIGHT INTO DAY

The T-Series comes fitted with 10 lights in the front as standard – with the option of adding two extra lights for wider headers. In the professional package, you also get lights on the side to make it easier to locate the next path, as well as tail lights for effective monitoring of the distribution of chaff and chopped residue, even at night. 360° LED work lights make the night as bright as day and 360° service lights on all key maintenance points round off our lighting packages.

## SPECIFICATIONS

	T 550	T 560	T 660	T 670
ENGINE				
	John Deere PowerTech PSS 6 cylinder engine with twin turbo			
Emission Level	Stage V	Stage V	Stage V	Stage V
Displacement (l)	6.8	9	9	9
Rated speed	2,200	2,200	2,200	2,200
Rated power (kW / hp / PS)	202 / 271 / 275	249 / 334 / 339	249 / 334 / 339	292 / 392 / 397
Bax power (kW / hp / PS)	224 / 300 / 305	285 / 382 / 387	285 / 382 / 387	335 / 449 / 455
Power boost @ rated speed	22 / 30 / 30	25 / 34 / 34	25 / 34 / 34	25 / 34 / 34
Engine Speed Management	NA	incl. w/ ProDrive	incl. w/ ProDrive	incl. w/ ProDrive
Fuel / DEF tank capacity (l)	800 / 33			
Air Compressor	optional			
Oil drainage hose for engine hydraulic and engine PTO oil	base			
XTRA CAPACITY FEEDERHOUSE				
Conveyor chains	3 chains		4 chains	
Slip Clutch	900 Nm			
Header reverser power (kW / hp / PS)	59 / 79 / 80			
Feederhouse Speed, m/sec	3.6			
Cutting angle adjustment, °	18 degrees on Level Land, 19 degrees on Hill Master			
THRESHING CYLINDER				
Channel width (mm)	1,400		1,670	
Cylinder diameter (mm)	660			
No. of rasp bars	10			
Wrapping Angle (degree)	124			
Cylinder speed range, standard (rpm)	470 - 950			
Cylinder dual range drive, option (rpm)	250 - 470 & 470 - 950			
Small Grain Concave	Optional for very dry conditions			
Universal Concave, full wire	Recommended when harvesting only small grain in tough / wet conditions			
High Versatility Sectionalised Concave with removeable inserts	Base equipment: A set of small grain inserts for harvesting in tough threshing conditions as well as dry and brittle harvesting conditions. Optional equipment: A set of universal inserts for small grain harvesting in tough and wet conditions or a set of round bar inserts for corn, peas and beans.			
XTRA LARGE SEPARATOR AND HIGH PERFORMANCE SEPARATOR (HPS) GRATE				
Xtra Large Separator diameter (mm)	800			
Xtra Large Separator speed (RPM)	380 / 760			
High Performance Separator (HPS) grate	2-Position adjustable			
REAR BEATER AND REAR BEATER GRATE				
Rear Beater diameter (mm)	400			
Rear Beater speed	Single speed relative to separator			
Rear Beater grate	2-Position adjustable			
TOTAL ACTIVE SEPERATION AREA				
Concave area according to ISO Norm 6689:1997 (m²)	1.13		1.35	
Separating area tine separator according to ISO Norm 6689:1997 (m²)	1.72		2.1	
Separating area rear beater according to ISO Norm 6689:1997 (m²)	0.45		0.55	
Total Active Separation Area according to ISO Norm 6689:1997 (m²)	3.30		4.0	
STRAW WALKERS				
Number of walkers	5		6	
Number of steps	7			
Walker area according to ISO Norm 6689:1997 (m²)	4.8		5.8	



	T 550	T 560	T 660	T 670
DYNAFLO PLUS CLEANING SYSTEM WITH AUGER TYPE PREPARATION SYSTEM FRONT CHAFFER, CHAFFER AND SIEVE				
# of conveying augers	6		6	
Tailing returns to threshing cylinder	Base			
Single range fan drive (RPM)	550 - 1,350			
Dual range fan drive (RPM)	300 - 600 & 550 - 1,350			
Max. Fan Air Volume (m³/min)	590		740	
Pre-Chaffer available as attachment according to ISO Norm 6689: 1997 (m²)	0.5		0.6	
Chaffer (m²)	2.5		3.1	
Sieve (m²)	2.2		2.6	
TOTAL cleaning shoe area with / without front chaffer according to ISO Norm 6689: 1997 (m²)	5.2 / 4.7		6.3 / 5.7	
Electric Sieve adjustment	Optional	Base		
GRAIN TANK				
Volume according to ISO Norm 5687:1999 (l)	8,000 standard; 10,000 opt. for LL only	10,000	9,000 standard; 11,000 opt.	11,000
Unloading auger swing range (deg.)	105	105	105	105
Standard unloading system at peak performance (l/sec)	88	NA	88	NA
Xtra Fast unloading sytem at peak performance (l/sec)	125	125	125	125
RESIDUE MANAGEMENT				
FineCutChopper	44		52	
ExtraFineCutChopper	88		108	
Chaff Spreader	Optional			
Electrical Adjustable Vane Tailboard	Optional	Base		
SIDE-HILL SYSTEMS				
SlopeMaster (inclines up to 7%)	Base			
HillMaster (inclines up to 22%)	Optional			
GROUND DRIVE				
Manual 3-Speed Transmission	Base	NA	NA	NA
Electrical Push Button Shift 3-Speed Transmission	Optional	Base		
ProDrive Stepless Transmission	NA	Optional		
Maximum speed with wheels or tracks (km/h) * depending on country regulation	30	40		
Differential Lock on front axle	NA	Optional w/ ProDrive		
X-traction 4WD axle with limited slip differntial lock	Optional			
Traction Control Anti Slip Management	NA	incl w/ ProDrive and X-traction axle		
John Deere 24' Tracks ground contact area (m²)	NA	Optional / 1.23		
John Deere 30' Tracks ground contact area (m²)	NA	Optional / 1.54		
TRANSPORT WIDTH				
John Deere 24' Tracks	NA	3.29	3.49	
John Deere 24' Tracks @ 3 m centre spacing	NA	3.31	3.59	
John Deere 30' Tracks	NA	3.49	3.79	
With 650/75 R32 or 680/85 R32 (m)	3.29			3.49
With 800/65 R32 or 800/70 R32 (m)	3.49			3.79
With 900/65 R32 (m)	3.79			3.99
With 520/85 R42 Dual Tyres (m)	NA			5.19
Maximum Shipping height with tyres (m)	4			
Shipping length (with shortest or folded unloading auger) (m)	depending on configuration < 9.50			
Shipping weight (depending on options) (kg)	15,200	15,800	16,500	16,500

## SPECIFICATIONS

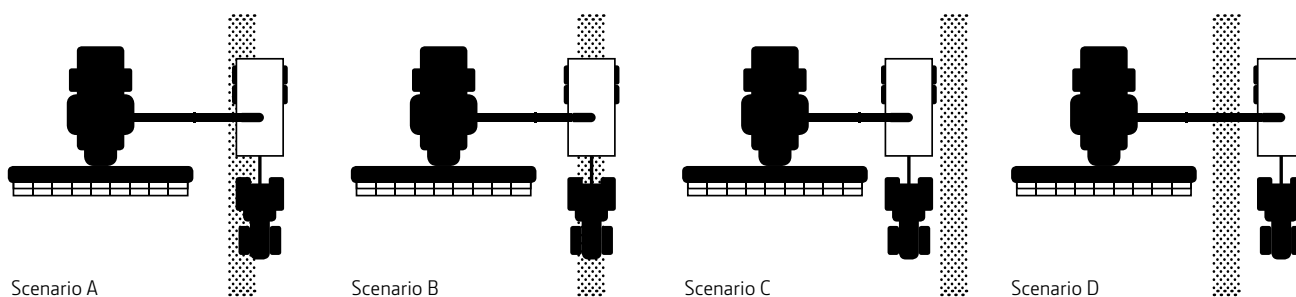
	T 550	T 560	T 660	T 670
<b>INTEGRATED TECHNOLOGY</b>				
HarvestMon Moisture Sensing			Optional	
HarvestDoc Yield Documentation			Optional	
HarvestSmart Automatic Forward Speed Regulation	NA		Optional	
AutoTrac Guidance			Optional	
Guidance Signal Availability			SF1 (free of charge); SF3, RTK	
AutoTrac Row Sense Guidance for corn headers			Optional	
Automatic Combine Adjustment			Base	
Interactive Combine Adjustment	Optional		Base	
ConnectedCombine			Optional	
JDLINK			Optional	
Remote Display Access			Optional	
Wireless Data Transfer			Optional	
Data Analysis			Available via MyJohnDeere.com	
myJob Apps			Available via App	
<b>CAB</b>				
Operator Seat	Air suspension seat with swivel and fore-aft attenuation		Air suspension seat with swivel and fore-aft & lateral attenuation	
Leather Package	NA		Optional leather steering wheel, instructor seat, heated / air ventilated operator seat	
Passenger Seat			Base	
7' GreenStar CommandCenter 3 Display	Base		NA	
7' GreenStar CommandCenter 3 Touchscreen Display	Optional		Base	
10' GreenStar 2630 Touchscreen Display			Optional	
Cameras			Optional (up to 4)	
Active Refrigerator	Optional		Base	
Automatic Air Conditioning and Heating			Base	
360° LED light working light package			Front stubble light (2x); header extremity light (2x) grain tank side row finder light (2x) grain tank light (1x) unloading auger light (1x) straw hood rear working lights (2x) chaff spreader rear working lights (2x)	
LED service & maintenance light package			Engine deck (1x) radiator door (1x) RH service door (1x) LH service door (2x) cleaning shoe service lights (2x)	



## UNLOADING AUGER COMPATIBILITY

HEADER	AUGER			
	5.2 m	5.6 m	6.5 m	7.3 m (not available in Germany)
620R / 620PF / 620F	B	A	D	D
622R / 622X / 622PF / 622F	A	B*	A	A
625R / 625X / 625PF / 625D / 625F	A	A	B*	A
630R / 630X / 630PF / 630D / 630F	N/A	C	A	B
635R / 635X / 635PF / 635D / 635F	N/A	N/A	C	C*

\* for small trailers below 3,5 m height we recommend the small trailer adoption kit (code 9532)



## CONNECTIVITY PACKAGES T-SERIES

	PREMIUM
AutoTrac Ready	●
GS3 2630 Display	●
GS3 AutoTrac & RowSense Activation	●
HarvestMon	●
Intelligent Combine Adjust 1	●
JDLink*	●
MyJobConnect or MyJobConnect Premium**	○
StarFire 6000 – SF1	○
StarFire 6000 – SF3	○
Legend: ● base; ○ optional; – excluded	

\* 1st year JDLink Connect / 2nd - 5th year JDLink Access

\*\* MyJobConnect Premium (only DE, UK, FR, NL, DK)

Elements of the Connectivity Packages are a limited promotional offer and include time based subscriptions. Be aware that some of the Connectivity Package as well as elements could not be available in all regions. Please contact your local John Deere dealer for availability.

There's no time for downtime when you're harvesting, so our dealerships are geared to provide you with the best support in the business. They know your operational needs as well as your machines and have received regular in-depth training from John Deere. This expertise, together with the finest parts delivery service in the industry, is what makes your partnership with your John Deere dealer so valuable.

## NOTHING RUNS LIKE A DEERE



This literature has been compiled for worldwide circulation. While general information, pictures and descriptions are provided, some illustrations and text may include finance, credit, insurance, product options and accessories not available in all regions. Please contact your local dealer for details. John Deere reserves the right to change specification and design of products described in this literature without notice. The green and yellow colour scheme, the leaping deer logo and the JOHN DEERE word mark are trademarks of Deere & Company.