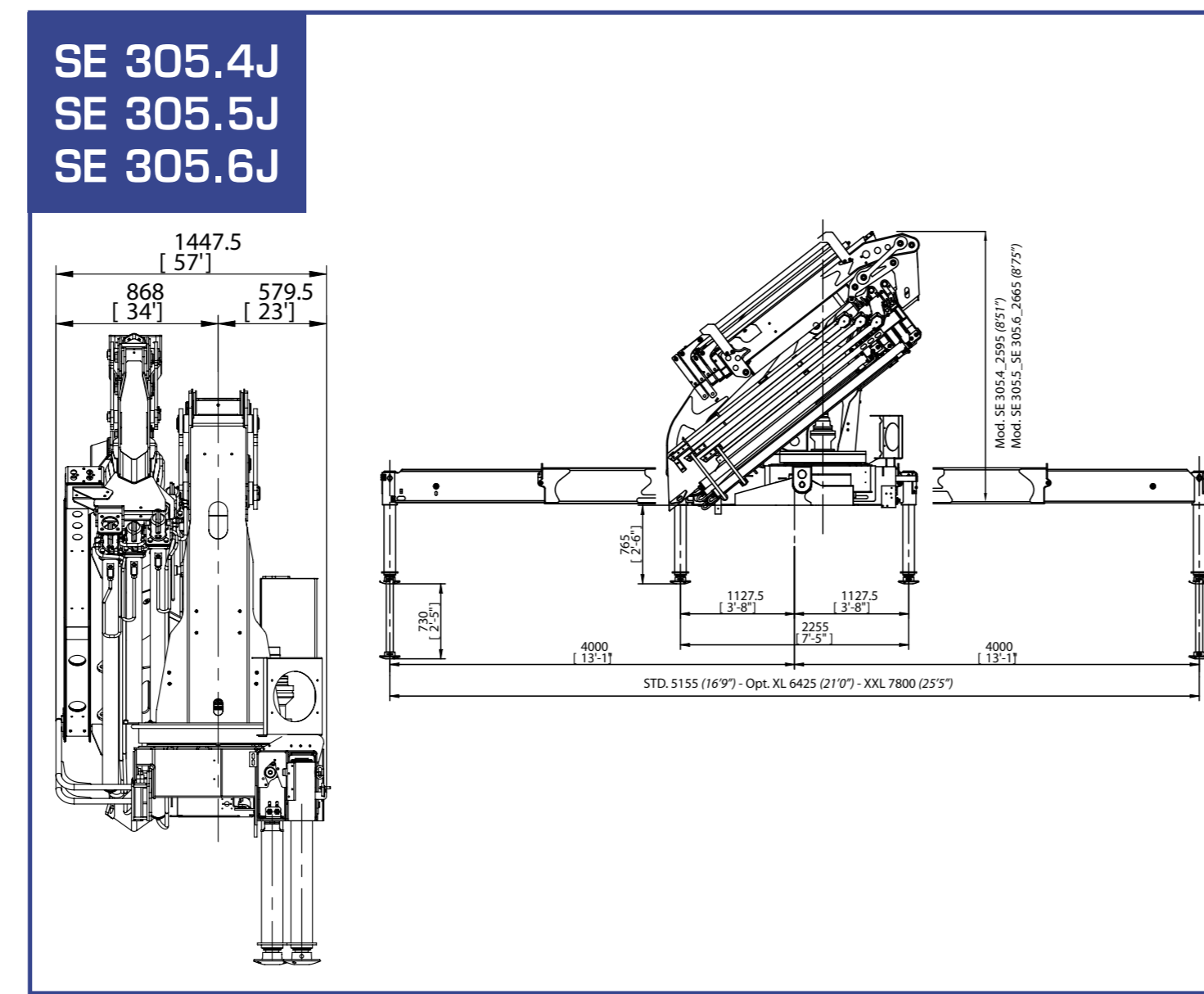
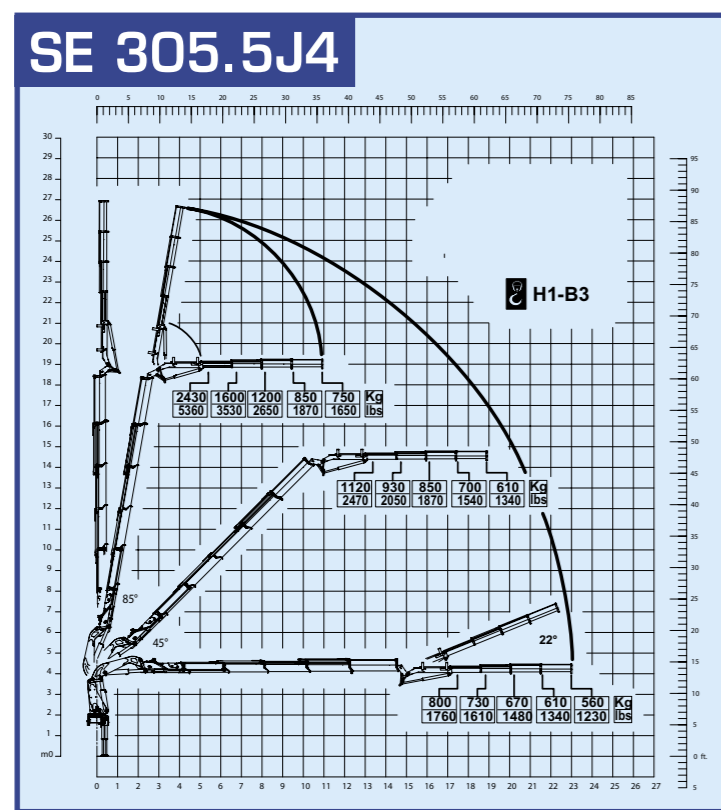
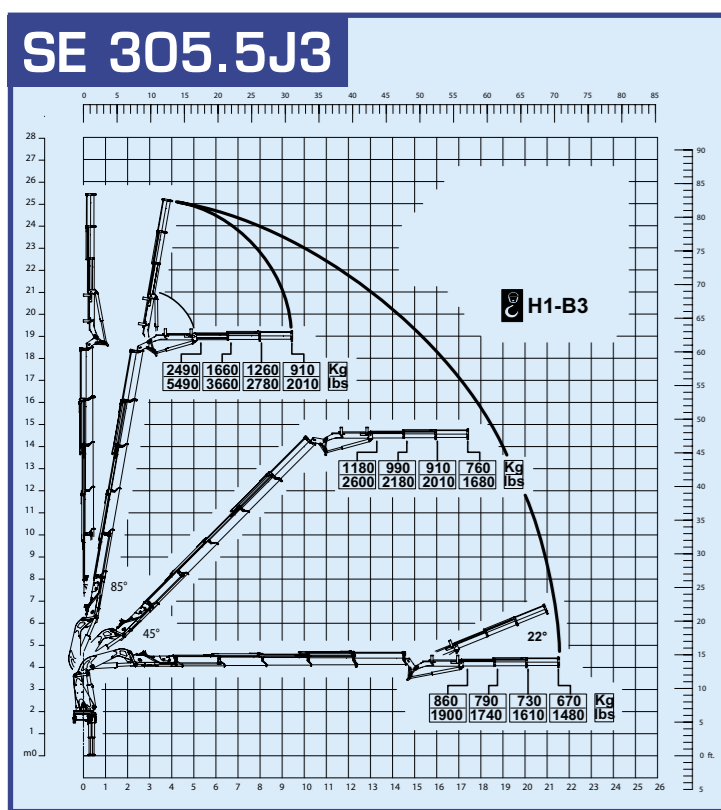
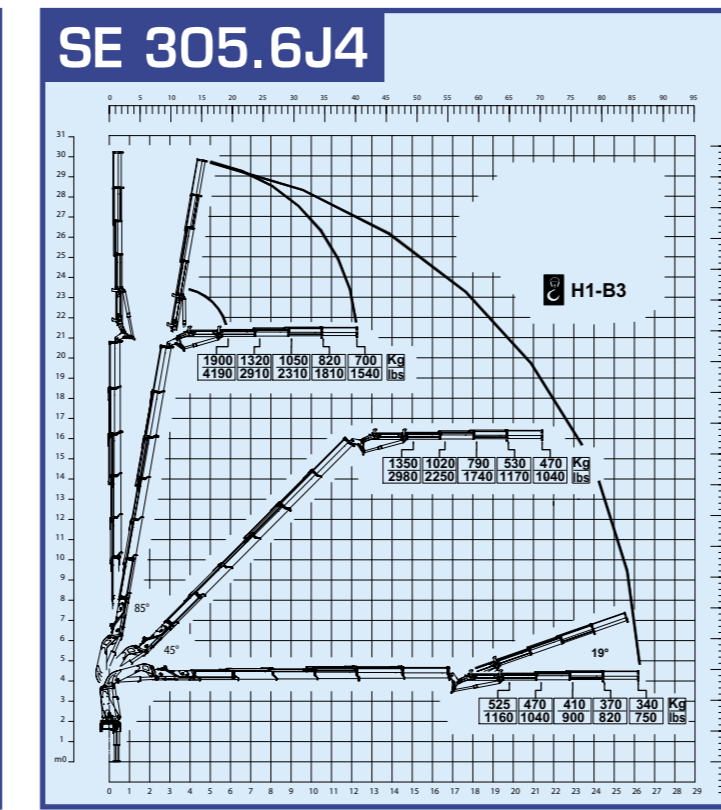
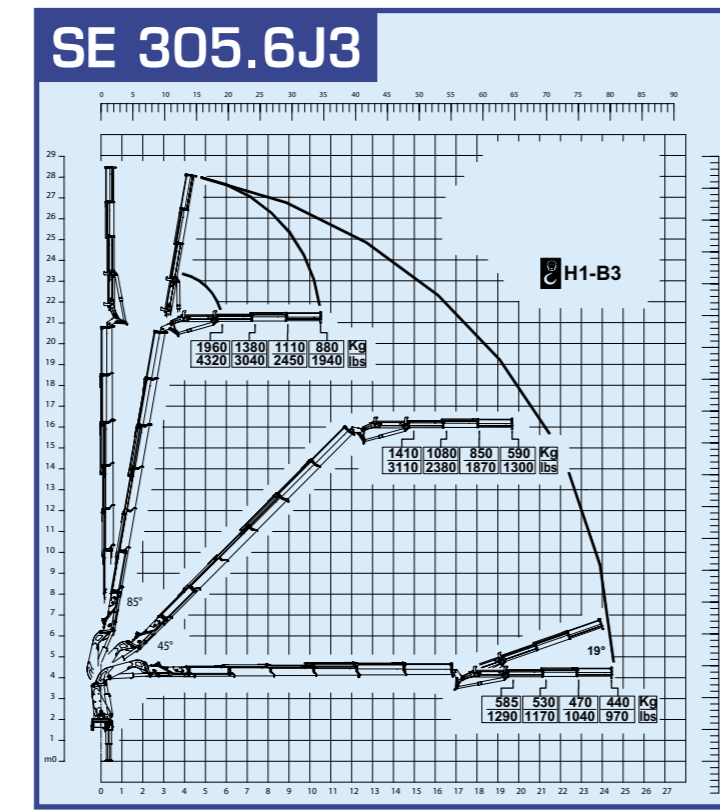
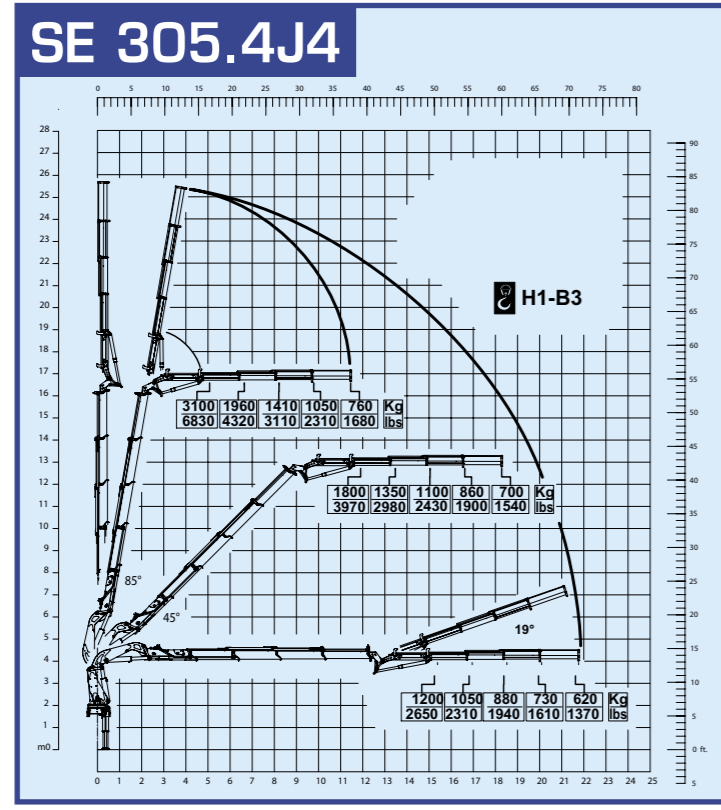
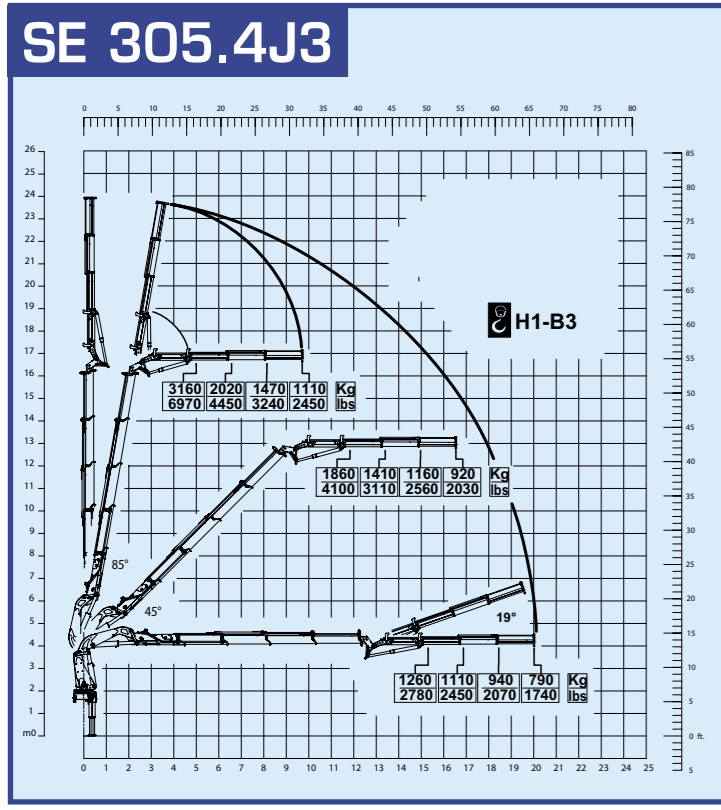




QUALITY
SE 305

www.pesci-cranes.com



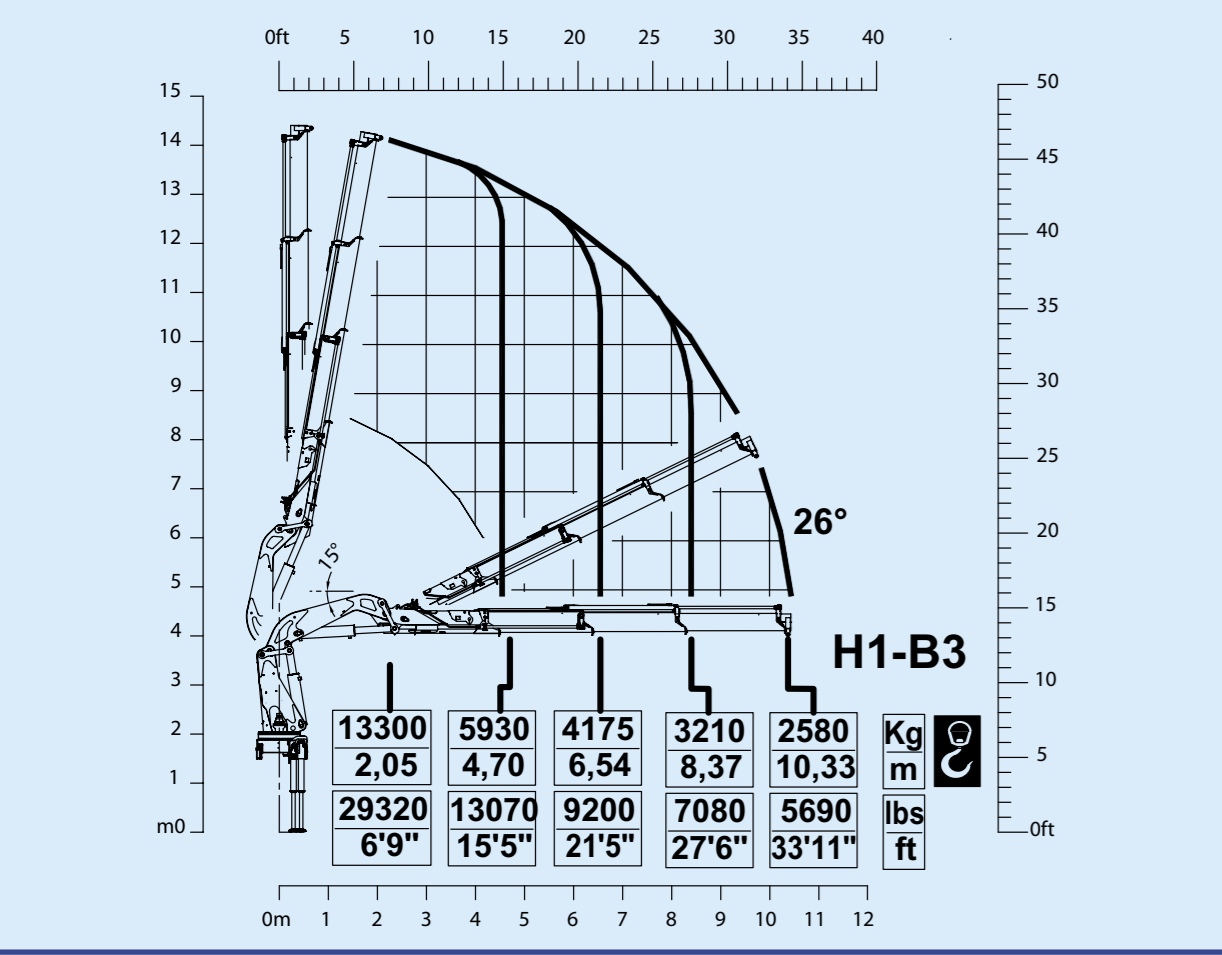
I Versione std.: Ceel. idraulico_Sistema HPV_Limitatore di momento_Comandi bilaterali in basso_1 motoriduttore di rotazione su ralla_Bracci esagonali_Doppie bielle_Cilindri di sfilo indipendenti_Norme DIN 15018 H1B3

D Std. Ausführung: El. Hydraulische Ce Vorrichtung_HPV Vorrichtung_Drehmomentbegrenzer_Beidseitige Steuerungen unten_1 Schwenkmotor mit Drehkranz_Sechskantige Arme_Kniehebel_Unabhängige Ausschubzylinder_Normen DIN 15018 H1B3

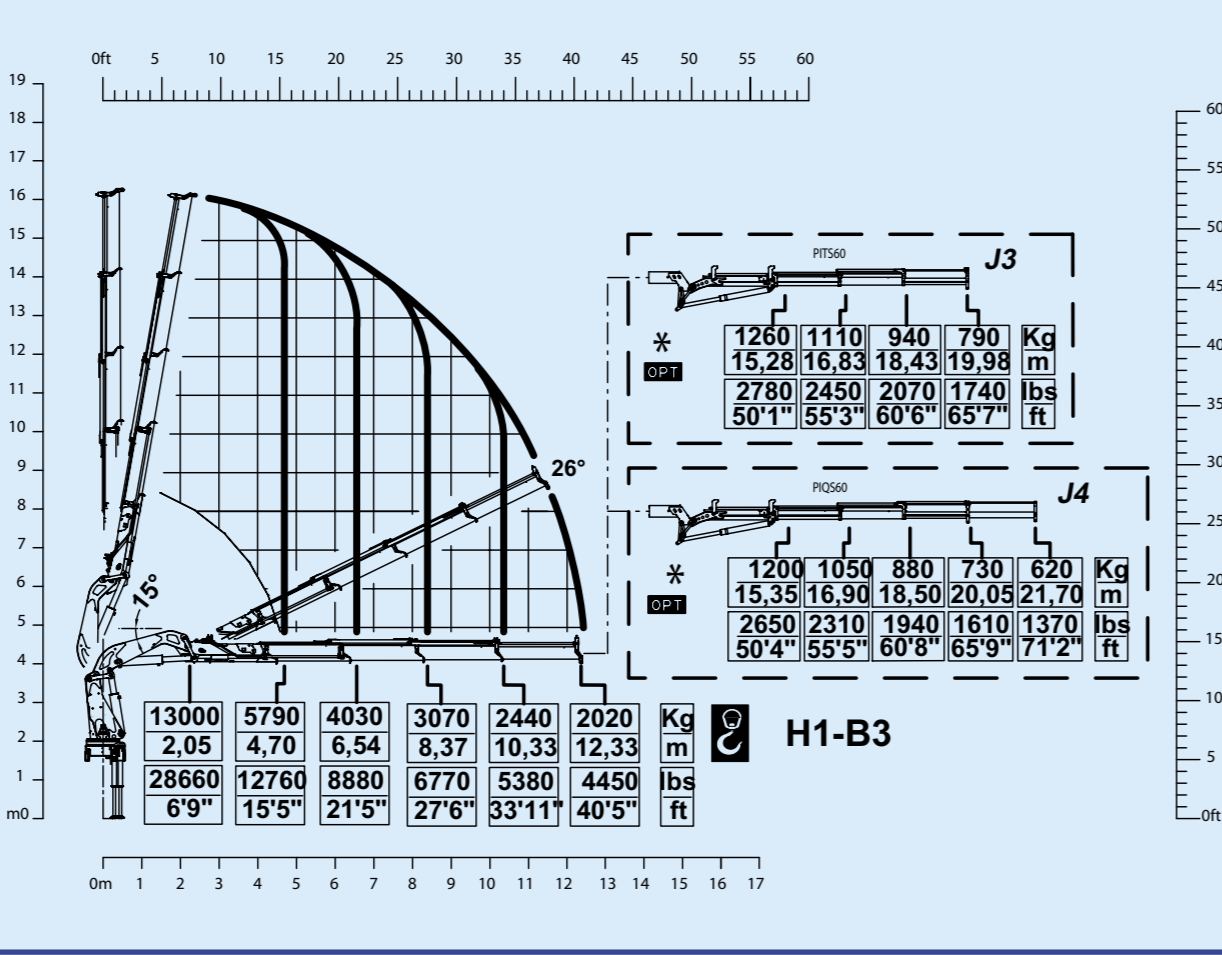
PESCI
V. EMILIA 281 _ 48014 CASTEL BOLOGNESE (RA) _ ITALY
Tel +39.0546.653.833 Fax +39.0546.656.205
e-mail: info@pesci-cranes.com _ www.pesci-cranes.com

02/2010
I dati e le descrizioni del presente catalogo sono forniti a titolo indicativo e non sono vincolanti. PESCI si riserva il diritto di modificarli senza preavviso.
Technical features are not binding. PESCI reserves the right to any modification without notice.

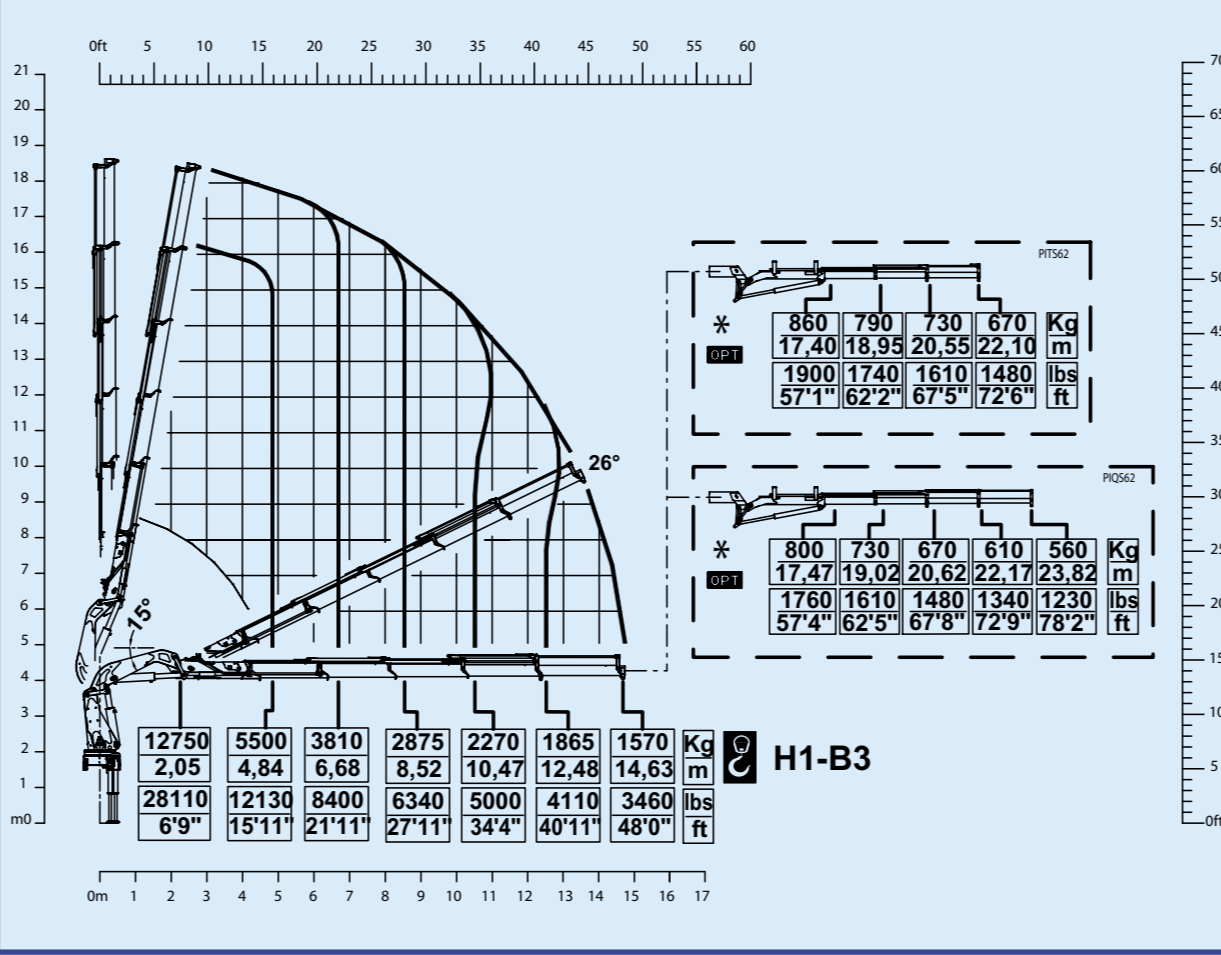
SE 305.3



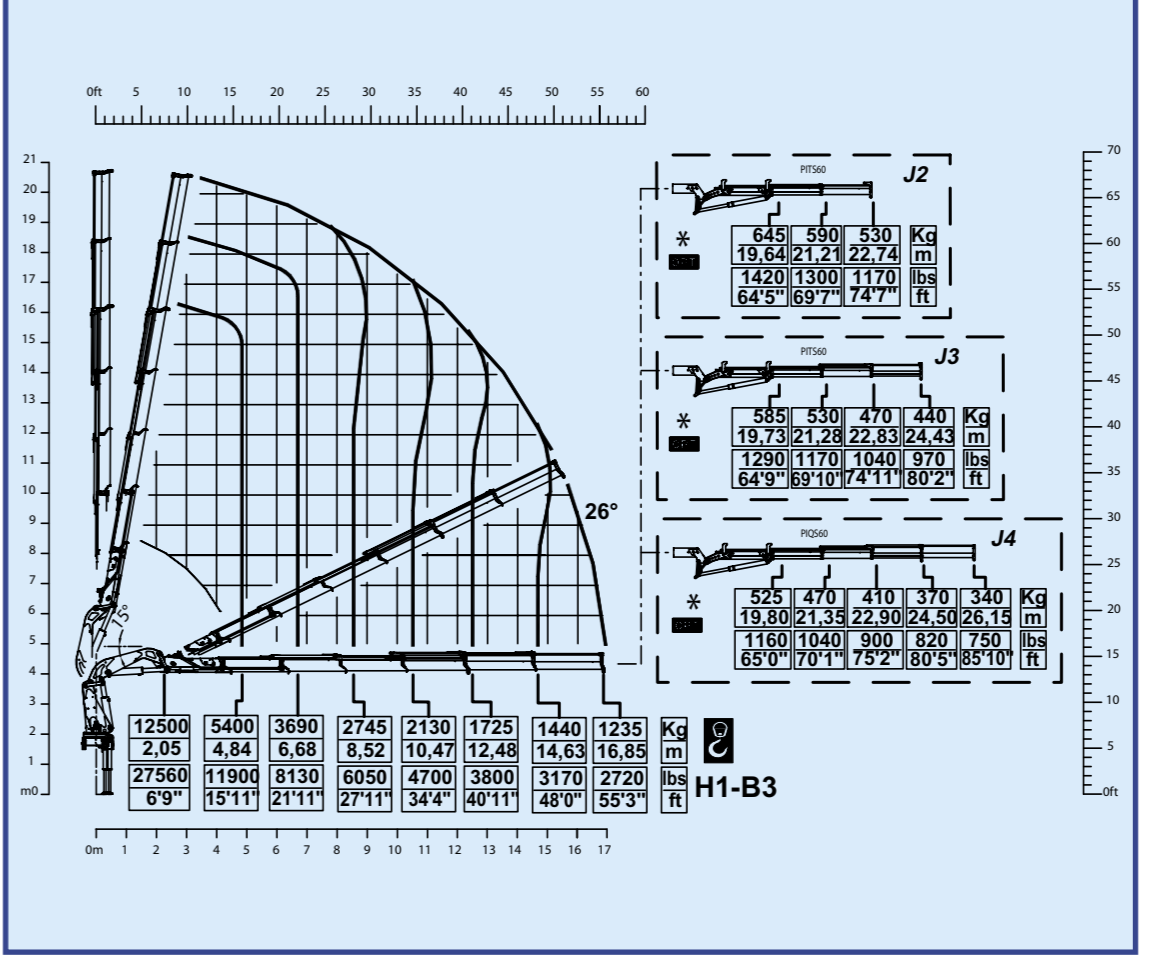
SE 305.4



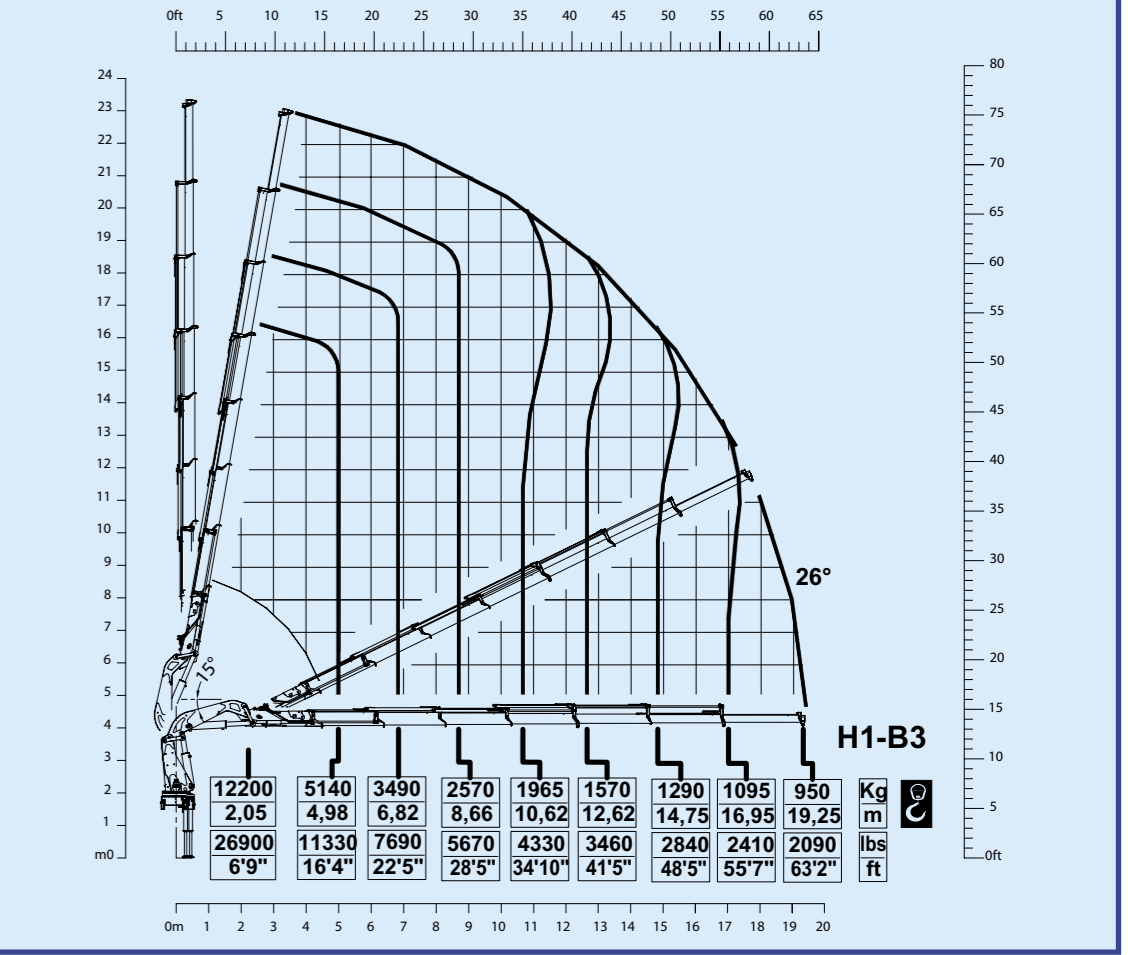
SE 305.5



SE 305.6

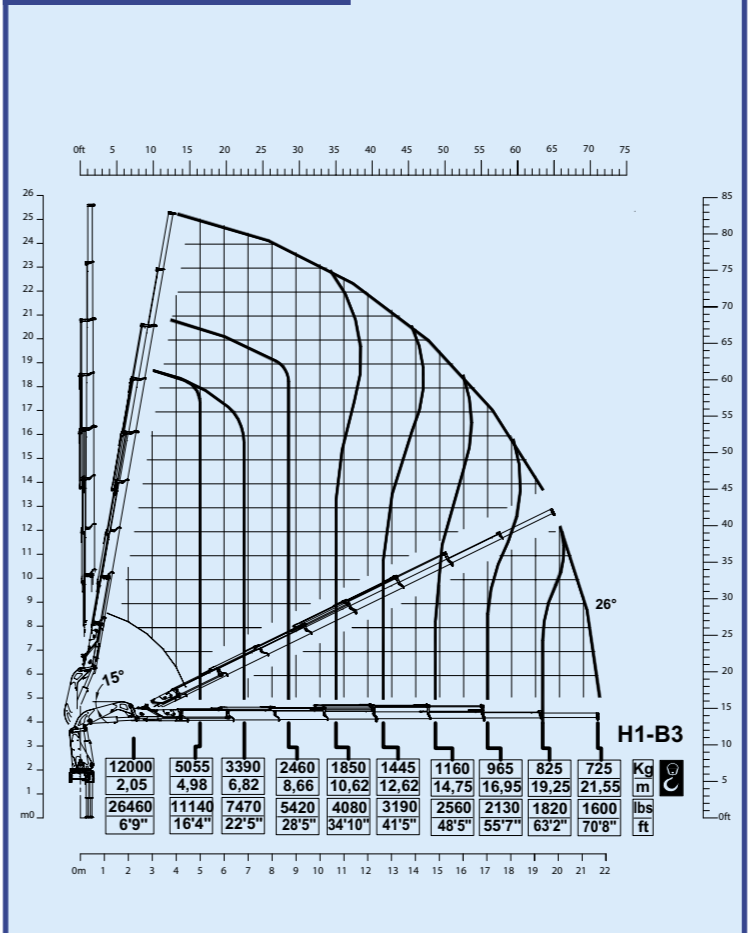


SE 305.7

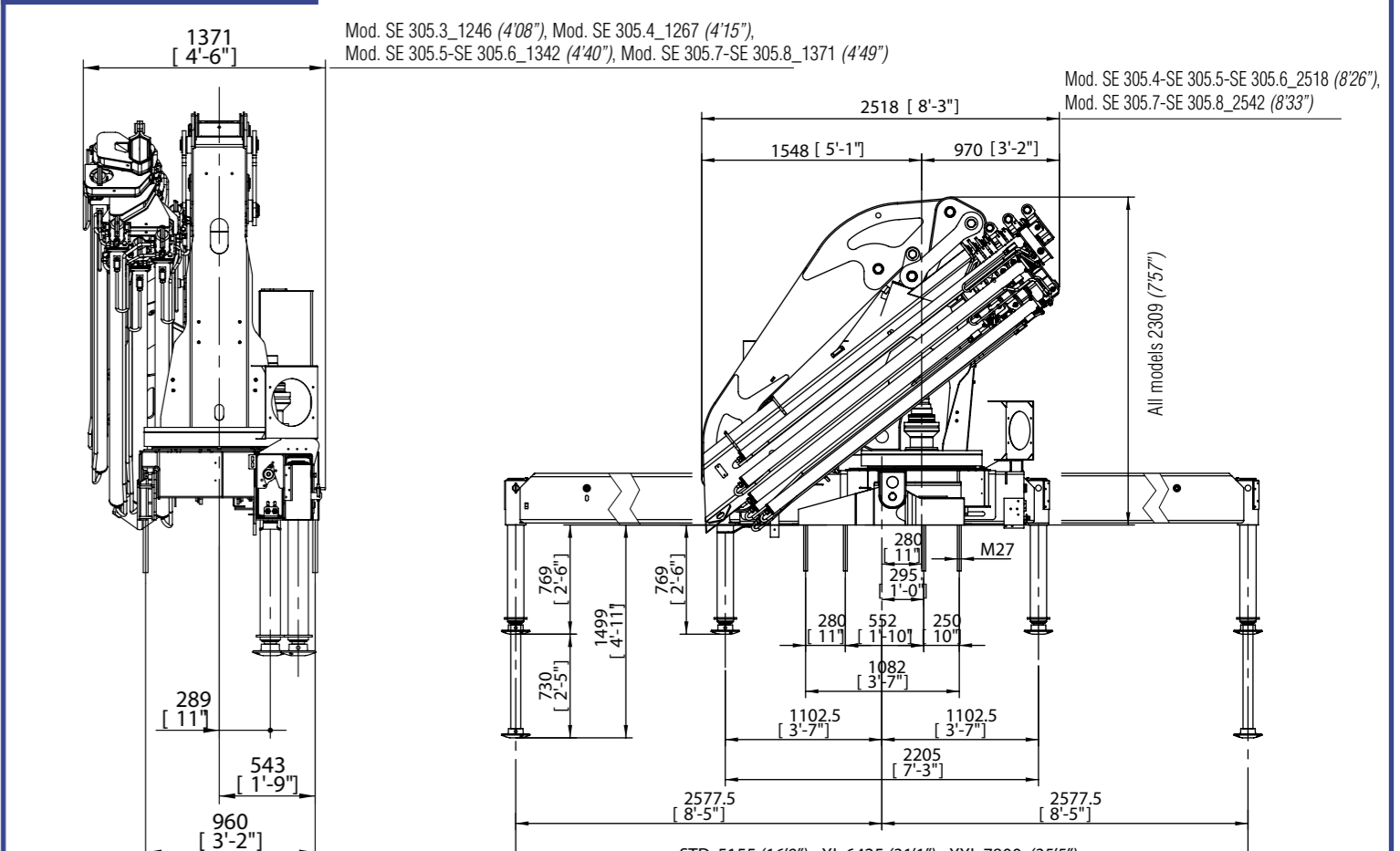


I	F	D	E	P	SE 305.3	SE 305.4	SE 305.5	SE 305.6	SE 305.7	SE 305.8	GB		USA		SE 305.3	SE 305.4	SE 305.5	SE 305.6	SE 305.7	SE 305.8
											Specifications	Specifications	SE 305.3	SE 305.4						
Momento massimo di sollevamento	Couple de levage	Hubmoment	Momento de elevación	Capacidade máxima de elevação	273 kNm	267 kNm	261 kNm	256,4 kNm	251 kNm	246,9 kNm	Lifting moment				197.400 lb.ft	193000 lb.ft	18884 lb.ft	185000 lb.ft	181626 lb.ft	179000 lb.ft
Momento massimo dinamico all'asse colonna	Moment maxi. dynamique à l'axe colonne	Max. dynamisches Moment an der Säulenachse	Momento max. dinamico al eje de la columna	Capacidade máxima dinamica no eixo da coluna	35050 daNm	35050 daNm	35050 daNm	35050 daNm	35050 daNm	35050 daNm	Maximum dynamic moment at column axis				23652 lb.ft	23652 lb.ft	23652 lb.ft	23652 lb.ft	23652 lb.ft	23652 lb.ft
Tempo di rotazione (360°)	Temps de rotation (360°)	Schwenkungszeit (360°)	Tiempo de giro (360°)	Tempo de rotação (360°)	22 s	22 s	22 s	22 s	22 s	22 s	Time of rotation (360°)				22 s	22 s	22 s	22 s	22 s	22 s
Coppia massima di rotazione	Couple maxi. de rotation	Max. Schwenkmoment	Potencia máxima de giro	Binário máximo de rotação	3270 daNm	3270 daNm	3270 daNm	3270 daNm	3270 daNm	3270 daNm	Maximum rotation torque				23652 lb.ft	23652 lb.ft	23652 lb.ft	23652 lb.ft	23652 lb.ft	23652 lb.ft
Velocità di sollevamento (*)	Vitesse de levage (*)	Hubgeschwindigkeit (*)	Velocidad de elevación (*)	Velocidade de elevação (*)	48,6 m/min	48,6 m/min	48,6 m/min	48,6 m/min	48,6 m/min	48,6 m/min	Lifting speed (*)				159'7" ft/min	159'7" ft/min	159'7" ft/min	159'7" ft/min	159'7" ft/min	159'7" ft/min
Numero di sezioni del distributore (gru STD)	Nombre des éléments du distributeur (gru STD)	Zahl der Steuerblocksektionen (Standardkran)	Número de las secciones del distribuidor (grúa STD)	Número dos elementos do distribuidor (grua std.)	4	4	4	4	4	4	Number of distributor section (STD crane)				4	4	4	4	4	4
Capacità serbatoio olio	Capacité réservoir huile	Fassungsvmögen des Ölbehalters	Capacidad del depósito de aceite	Capacidade do depósito de óleo	210 l.	210 l.	210 l.	210 l.	210 l.	210 l.	Oil tank capacity				46,2 gal	46,2 gal	46,2 gal	46,2 gal	46,2 gal	46,2 gal
Pressione massima di esercizio (gru CE)	Pression maxi. d'exercice (gru CE)	Max. Betriebsdruck (CE Kran)	Presión máxima de trabajo (grúa CE)	Pressão máxima de trabalho (Grua CE)	310 bar	310 bar	310 bar	310 bar	310 bar	310 bar	Maximum working pressure (CE crane)				4495 psi	4495 psi	4495 psi	4495 psi	4495 psi	4495 psi
Portata ottimale della pompa	Débit de la pompe	Optimale Fördermenge der Pumpe	Caudal recomendado de la bomba	Capacidade da bomba	50 l.	50 l.	50 l.	50 l.	50 l.	50 l.	Recommended pump delivery				13,7 gal/min	13,7 gal/min	13,7 gal/min	13,7 gal/min	13,7 gal/min	13,7 gal/min
Potenza massima richiesta	Puissance maxi. demandée	Max. Leistung	Potencia máxima demandada	Potência máxima	31 Kw/CV	31 Kw/CV	31 Kw/CV	31 Kw/CV	31 Kw/CV	31 Kw/CV	Maximum power required				22865 ft.lbs/s	22865 ft.lbs/s	22865 ft.lbs/s	22865 ft.lbs/s	22865 ft.lbs/s	22865 ft.lbs/s
Tiro massimo verricello (ultimo strato)	Tirage maxi. du treuil (dernière couche)	Max. Zugkraft Seilwinde (letzte Anzahl)	Tiro máximo del cabrestante (última capa)	Força máxima do goincho	2000 daN	2000 daN	2000 daN	2000 daN	2000 daN	2000 daN	Maximum pull of winch (last layer)				4410 lb	4410 lb	4410 lb	4410 lb	4410 lb	4410 lb
Massa gru standard	Masse grue standard	Masse des Standardkrans	Peso de la grúa standard	Peso da grua standard	3620 kg	3620 kg	3620 kg	4.100 kg	4.225 kg	4350 kg	Mass of standard crane				7980 lb	8377 lb	8710 lb	9040 lb	9295 lb	9600 lb
Massa extra jib	Masse extra jib	Masse extra jib	Peso de extra jib	Peso de extra jib		560 kg. 620 kg.	560 kg. 620 kg.	560 kg. 620 kg.			Mass extra jib				1230 lb 1370 lb	1230 lb 1370 lb	1230 lb 1370 lb			

SE 305.8



SE 305.STD



E considerato lo sbraccio massimo della gru base / *Avec un extension maxi. de la grue de base / *Es handelt sich um die max. Ausladung des Standardkrans / *Se considera el alcance max. de la grúa std / *Se considera el alcance max. de la grúa std / *The maximum range of the basic crane is considered