

cmc
XTRM

S15F




www.cmclift.com



DETAILS



**TRANSPORTABLE WITH TRAILER
EU DRIVING LICENCE B/E**



PROPORTIONAL ELECTRO-HYDRAULIC CONTROLS



EMERGENCY CONTROLS



WIRED REMOTE CONTROL FOR TRANSLATION



ADJUSTABLE TRACKS IN HEIGHT AND WIDTH



HONDA ENGINE GX390



STABILIZER CONTROLS



Platform that allows you to reach the maximum outreach regardless of the load in the basket. An extremely reliable platform, articulated with Jib, able to combine excellent performance with unrivaled ease of use, maintaining the high quality that distinguishes every CMC product.

Standard Equipment

S15F is supplied with Honda GX390 petrol engine, wired remote control for the translation, air/water hose, 12V in basket, electric motor, fault detection display and adjustable tracks in width and height, 230V socket in basket, crankcase for stabilizer cylinders.

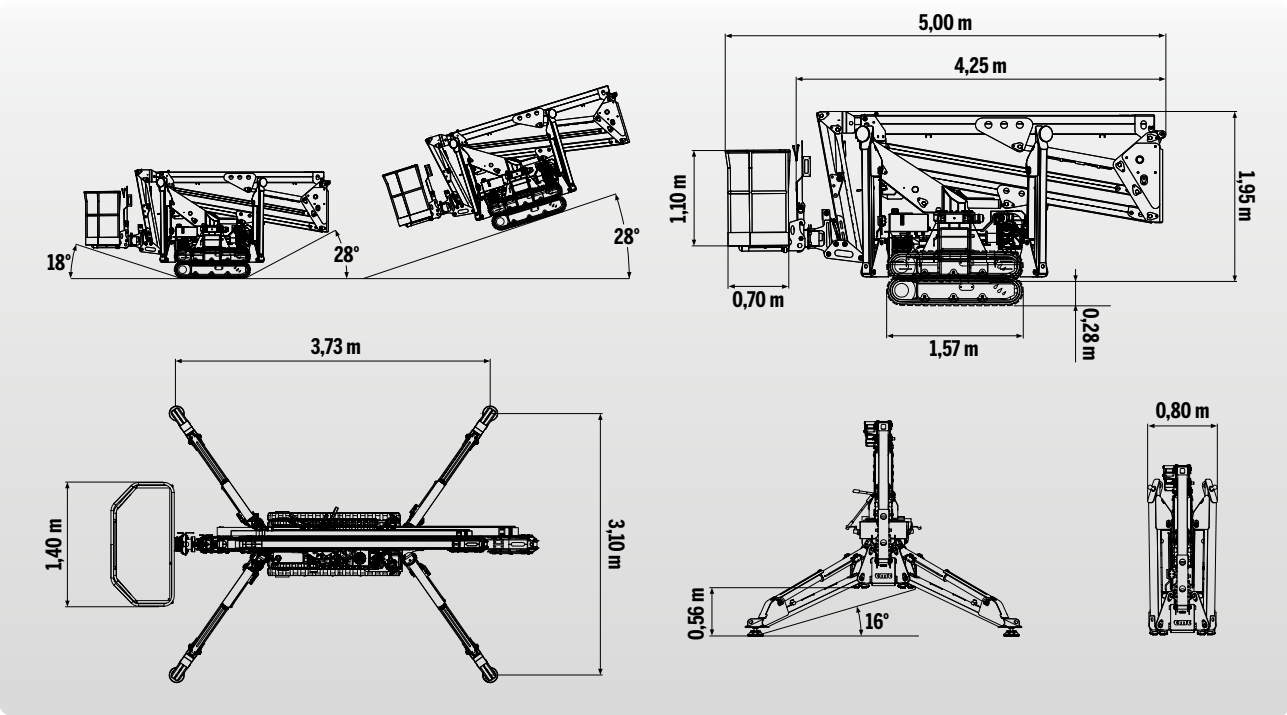
Available accessories:

- Yanmar Diesel engine L100N6CF1T1AA
- Honda iGX390 petrol engine
- Full lithium battery (100 Ah) version
- No-marking tracks
- Hydraulic motors for double translation speed
- Basket rotation (90° + 90°)
- 1 or 2-men fiberglass basket
- Remote connection kit
- Customized colors

The specifications and characteristics indicated are subject to change and are not binding.



TECHNICAL DATA

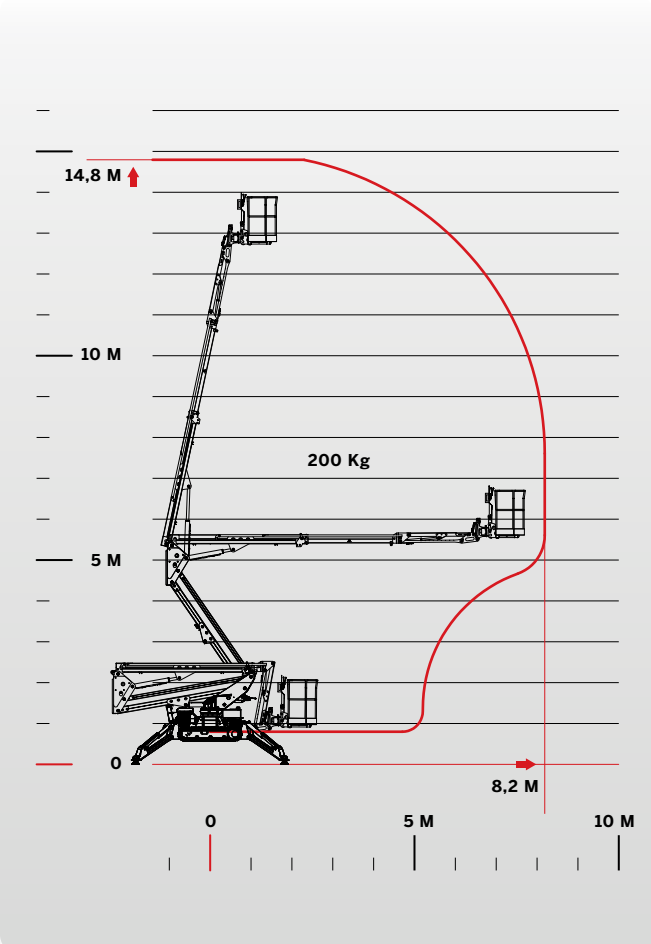


MAXIMUM LOAD

200 KG + + 40 KG



PERFORMANCE



14,80 m



+/- 90° optional



8,20 m



356° non continuous



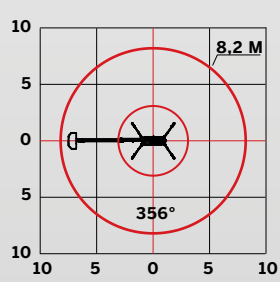
200 Kg



2350 Kg



1,4x0,7x1,1 m





**Ease of use
and very high performance.**

Important performance for this platform, designed for both the rental and the end user. With 14.8 meters of maximum working height and 8.5 meters of outreach, S15F is a platform suitable for any kind of work thanks to its ability to adapt even to the most tough terrain. The compact stabilization area makes it a unique platform ready to increase the success of working at height.

