

# Product Information: Crawler Excavator

## R 956

Litronic®



### Generation

6

### Engine

250 kW/340 HP

Stage V

### Operating Weight

Backhoe: 51,000 – 59,350 kg

Shovel: 56,750 – 57,300 kg

### Bucket Capacity

Backhoe: 1.25 – 3.50 m<sup>3</sup>

Shovel: 2.50 – 3.10 m<sup>3</sup>

# LIEBHERR



# Experience the Progress

## R 956

### Safety

- Panoramic visibility with no obstructions, rear and side view monitoring cameras
- Retractable console for easy and safe access to the cab
- Emergency exit via the rear cab window, whatever the excavator's configuration
- Windshield and right-hand window in laminated tinted glass

### Equipment

- Large choice of sticks
- Longer lifespan of components and higher productivity thanks to the automatic centralised lubrication system
- Safety check valves for hoist and stick cylinders

### Maintenance

- Maintenance points on the cool side of the engine
- Quick and easy cleaning and visual inspection
- Complementary radiators fitted on hinges
- Engine oil, hydraulic oil, fuel and urea levels visible on the display
- Shut-off valve to quickly and easily interrupt the circulation of oil between the tank and the hydraulic system







### Comfort

- Spacious, air-conditioned work space
- Airsprung seat with vertical and longitudinal damping
- Userfriendly high resolution 7" colour touchscreen
- Completely retractable front cab window
- New LED lighting as standard

### Engine

- New engine that conforms with the Stage V European exhaust emissions standard
- Automatic engine idling / speed increase, controlled via joystick sensors

### Undercarriage

- Robust, reliable X-frame undercarriage, easy to secure thanks to its integrated eyelets
- Easy maintenance
- Maintenance-free crawler track and track rollers with lifetime lubrication
- 3-part chain guide



# Experience the Progress

## R 956 Shovel

### Equipment

- Parallel cinematics for powerful break-out
- Bucket cylinders positioned under the equipment for better protection
- Optional boom cylinder protection

### Tools

- Different types of buckets:
- Type I: non-abrasive materials, such as limestone without flint
- Type II: Shot material, or easily breakable rock (classification 3 to 4 according to DIN 18300)
- Type III: Highly abrasive materials, such as rocks with a high silica content, sandstone, granite, etc.







#### **Operator's cab**

- Operator's cab with 2' 7" elevation for improved visibility
- Optionally equipped with a FOPS and FGPS front guard
- Comfortable and quiet cab

# Technical Data



## Engine

<b>Rating per ISO 9249</b>	250 kW (340 HP) at 1,800 RPM
<b>Torque</b>	2,280 Nm at 1,000 RPM
<b>Model</b>	Liebherr D936 A7
<b>Type</b>	6 cylinder in-line
Bore	130 mm
Stroke	150 mm
Displacement	10.5 l
<b>Engine operation</b>	4-stroke diesel Common-Rail, monoturbo
<b>Exhaust gas treatment</b>	Stage V DOC + DPF + SCR Passive regeneration by thermo management
<b>Cooling system</b>	Water-cooled and integrated motor oil cooler, after-cooled and fuel cooled
<b>Air cleaner</b>	Dry-type air cleaner with pre-cleaner, primary and safety elements
<b>Fuel tank</b>	734 l
<b>Urea tank</b>	90 l
<b>Electrical system</b>	
Voltage	24 V
Batteries	2 x 180 Ah/ 12 V
Starter	24 V/7.8 kW
Alternator	Three-phase current 28 V/140 A
Engine idling	Sensor controlled
<b>Motor management</b>	Connection to the integrated excavator system controlling via CAN-BUS to the economical utilisation of the service that is available



## Hydraulic Controls

The controlling is conducted via the integrated excavator system technology, input and output modules, communicated via the CAN-BUS with the electronic central unit

<b>Power distribution</b>	Via control valves in single block with integrated safety valves
Flow summation	To boom and stick
Closed-loop circuit	For uppercarriage swing drive
<b>Servo circuit</b>	
Equipment and swing	Proportional via joystick levers
Travel	– Proportional control via foot pedals or removable levers – Speed pre-selection
<b>Additional functions</b>	Proportional regulation via foot pedals or mini-joystick



## Hydraulic System

<b>Hydraulic pumps</b>	
For equipment and travel drive	Liebherr, variable displacement, swashplate double pump
Max. flow	2 x 380 l/min.
Max. pressure	350 bar
For swing drive	Reversible, variable displacement, swashplate pump, closed-loop circuit
Max. flow	201 l/min.
Max. pressure	375 bar
<b>Pump regulation</b>	Electro-hydraulic with electronic engine speed sensing regulation, pressure compensation, flow compensation
<b>Hydraulic tank</b>	380 l
<b>Hydraulic system</b>	743 l
<b>Hydraulic oil filter</b>	2 full flow filters in return line with integrated fine filter area (5 µm)
<b>Cooling system</b>	Compact cooler for water cooler, after-cooler, fuel cooler and transmission pump oil, sandwiched with cooler for oil and condenser of air-conditioning with hydrostatically controlled fan drives
<b>MODE selection</b>	Adjustment of engine and hydraulic performance via a mode pre-selector to match application, e.g. for especially economical and environmentally friendly operation or for maximum digging performance and heavy-duty jobs
<b>RPM adjustment</b>	Stepless adjustment of engine output via RPM at each selected mode
<b>Tool Control</b>	10 preadjustable pump flows and pressures for add-on attachments



## Swing Drive

<b>Drive</b>	Liebherr swashplate motor with integrated brake valve
<b>Transmission</b>	Liebherr compact planetary reduction gears
<b>Swing ring</b>	Liebherr, sealed race ball bearing swing ring, internal teeth
<b>Swing speed</b>	0 – 5.8 RPM stepless
<b>Swing torque</b>	160 kNm
<b>Holding brake</b>	Wet multi-disc (spring applied, pressure released)



## Operator's Cab

<b>Cab</b>	Work headlights integrated in the ceiling, a door with a sliding window (can be opened on both sides), large storing box and several stowing possibilities, shock-absorbing suspension, sounddamping insulating, tinted laminated safety glass, separate window shades for the sunroof window and windscreen, cigarette lighter and 12 V plug, storage bins, lunchbox, cup holder
<b>Operator's seat</b>	Liebherr-Comfort seat, airsprung with automatic weight adjustment, vertical and longitudinal seat damping including consoles and joysticks. Seat and armrests adjustable separately and in combination, seat heating as standard
<b>Control system</b>	Arm consoles, swinging with the seat
<b>Operation and displays</b>	Large high-resolution colour display with intuitive operation via touchscreen, video, versatile adjusting, control and monitoring facilities, e.g. climate control, implement and attachment parameters
<b>Air-conditioning</b>	Standard automatic air-conditioning fully controlled on the display, ambient air function, fast de-icing and demisting at the press of a button, air vents can be operated via a menu. Ambient air and fresh air filters can be easily replaced and are accessible from outside and standing on the ground. Heating-cooling unit, designed for extreme outside temperatures, sensors for solar radiation, inside and outside temperatures The air conditioning system contains fluorinated greenhouse gases
Refrigerant	R134a
Global warming potential	1,430
Quantity at 25 °C*	1,260 g
CO <sub>2</sub> equivalent	1.80 t
<b>Vibration emission**</b>	
Hand/arm vibrations	< 2.5 m/s <sup>2</sup> , according with ISO 5349-1:2001
Whole-body vibrations	< 0.5 m/s <sup>2</sup>
Measuring inaccuracy	According with standard EN 12096:1997

## Undercarriage

<b>Versions</b>	
LC	Gauge 2,900 mm
LC-V	Gauge 2,890 mm
HD	Gauge 2,900 mm
<b>Drive</b>	Liebherr swashplate motor with integrated brake valve
<b>Transmission</b>	Liebherr compact planetary reduction gear
<b>Maximum travel speed</b>	LC: low range 3.3 km/h high range 4.8 km/h LC-V/HD: low range 2.6 km/h high range 3.7 km/h
<b>Net drawbar pull on crawler</b>	LC: 377 kN LC-V/HD: 446 kN
<b>Track components</b>	LC: D7G, maintenance-free LC-V/HD: D8L, maintenance-free
<b>Track rollers/Carrier rollers</b>	LC: 10/2 LC-V: 10/3 HD: 9/2
<b>Tracks</b>	Sealed and greased
<b>Track pads</b>	Triple grouser
<b>Holding brake</b>	Wet multi-disc (spring applied, pressure released)
<b>Brake valves</b>	Integrated into travel motor
<b>Lashing eyes</b>	Integrated



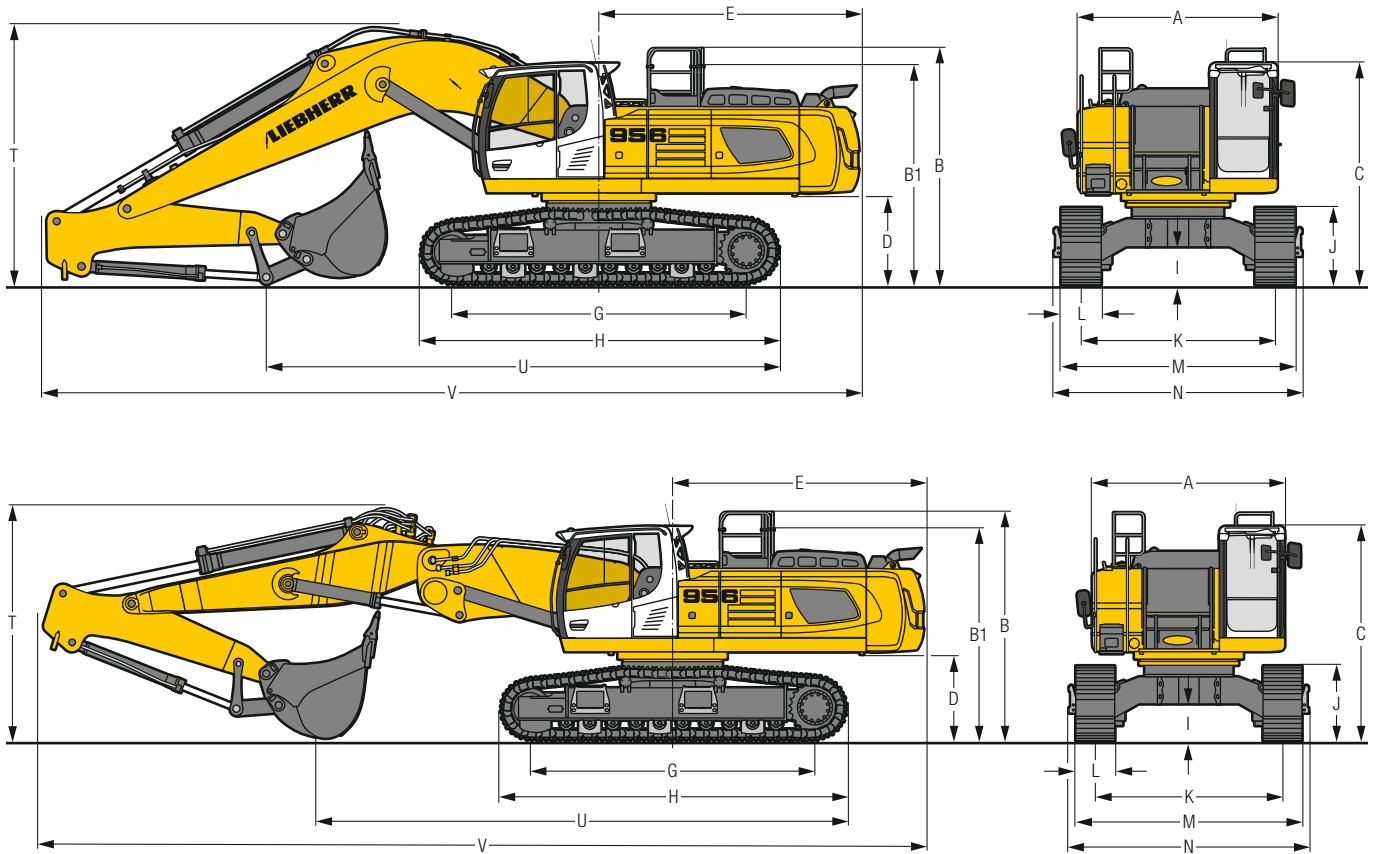
## Equipment

<b>Type</b>	Combination of resistant steel plates and cast steel components
<b>Hydraulic cylinders</b>	Liebherr cylinders with seal and guidance systems
<b>Bearings</b>	Sealed, low maintenance
<b>Lubrication</b>	Automatic central lubrication system (except link and tilt geometry)
<b>Hydraulic connections</b>	Pipes and hoses equipped with SAE split-flange connections
<b>Buckets</b>	Standard equipped with Liebherr tooth system

\* Valid for standard machine without operator's cab elevation and without height adjustable cab

\*\* For the risk assessment according to 2002/44/EC see ISO/TR 25398:2006

# Dimensions





	LC	mm			HD	mm			LC-V	mm		
<b>A*</b> Uppercarriage width		2,970				2,970				2,970		
<b>B</b> Uppercarriage height		3,535				3,555				3,660		
<b>B1</b> Uppercarriage height (handrails folded)		3,285				3,305				3,410		
<b>C</b> Cab height		3,315/3,510***				3,335/3,530***				3,440/3,635***		
<b>D</b> Counterweight ground clearance		1,335				1,355				1,460		
<b>E</b> Rear-end length		3,900				3,900				3,900		
<b>G</b> Wheelbase		4,400				4,500				4,500		
<b>H</b> Undercarriage length		5,365				5,550				5,550		
<b>I</b> Undercarriage ground clearance		555				575				800		
<b>J</b> Track height		1,160				1,225				1,210		
<b>K</b> Track gauge		2,900				2,900				2,390/2,890**		
<b>L</b> Track pad width		500	600	750		500	600	750		500	600	750
<b>M</b> Width over tracks		3,465	3,500	3,650		3,465	3,500	3,650		2,970/3,470**	2,990/3,490**	3,140/3,640**
<b>N</b> Width over steps		3,715	3,715	3,715		3,715	3,715	3,715		3,225/3,725**	3,225/3,725**	3,225/3,725**

\* without door stop device and spacer

\*\* work position

\*\*\* with FOPS top guard

	Stick length m	Mono boom 6.70 m direct mounting			Mono boom 7.60 m direct mounting			Mono boom straight 8.00 m direct mounting			Two-piece boom 7.90 m direct mounting			Mono boom 9.20 m direct mounting		
		LC	HD	LC-V	LC	HD	LC-V	mm	HD	mm	LC	HD	LC-V	LC	mm	LC-V
<b>T</b> Boom height	2.35	3,900	3,900	4,000	3,900	3,900	4,000	3,600	3,650	3,650	3,700	–	–	–	–	–
	2.90	3,950	3,950	4,050	3,950	3,950	4,050	3,700	3,750	3,750	3,800	4,150	4,250	–	–	–
	3.80	3,900*	3,900*	4,000*	4,000	4,000	4,100	3,850	4,050	4,000	4,050	4,250	4,350	–	–	–
	5.00	–	–	–	–	–	–	–	–	–	–	4,350	4,450	–	–	–
<b>U</b> Length on ground	2.35	7,650	7,750	7,750	7,600	7,700	7,700	8,350	8,200	8,050	8,150	–	–	–	–	–
	2.90	7,100	7,200	7,200	8,200	8,300	8,300	7,900	7,600	7,600	7,700	8,750	8,900	–	–	–
	3.80	9,300*	9,400*	9,400*	7,300	7,400	7,400	8,250	7,000	6,900	7,100	9,000	9,150	–	–	–
	5.00	–	–	–	–	–	–	–	–	–	–	7,750	7,900	–	–	–
<b>V</b> Overall length	2.35	12,200			13,250			13,800			13,700			14,900		
	2.90	12,250			13,250			13,700			13,600			14,900		
	3.80	12,200*			13,250			13,700			13,600			14,900		
	5.00	–			–			–			–			–		
Bucket		2.70 m <sup>3</sup>			2.00 m <sup>3</sup>			2.00 m <sup>3</sup>			2.00 m <sup>3</sup>			1.65 m <sup>3</sup>		

\* without bucket

## Transport Dimensions

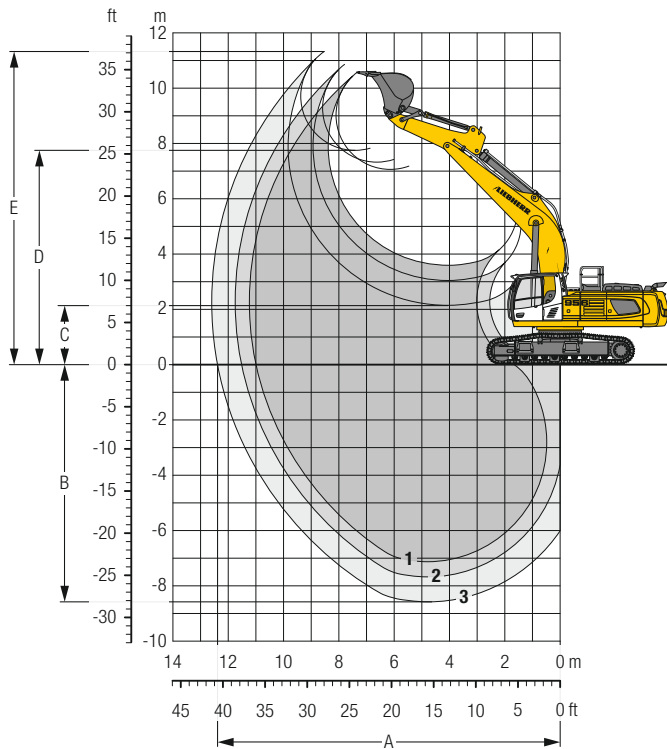
### removable elements disassembled

	Undercarriage / Stick mm	Mono boom 6.70 m			Mono boom 7.60 m			Mono boom straight 8.00 m			Two-piece boom 7.90 m			Mono boom 9.20 m		
		mm	mm	mm	mm	mm	mm	mm	mm	mm	mm	mm	mm	mm	mm	
Pad width	LC	500	600	750	500	600	750	500	600	750	500	600	750	500	600	750
	HD	3,715	3,715	3,715	3,715	3,715	3,715	3,715	3,715	3,715	3,715	3,715	3,715	3,715	3,715	3,715
	LC-V	3,225	3,225	3,225	3,225	3,225	3,225	–	–	–	3,225	3,225	3,225	3,225	3,225	3,225
Transport width	LC	3,715	3,715	3,715	3,715	3,715	3,715	3,715	3,715	3,715	3,715	3,715	3,715	3,715	3,715	3,715
	HD	3,715	3,715	3,715	3,715	3,715	3,715	3,715	3,715	3,715	3,715	3,715	3,715	3,715	3,715	3,715
	LC-V	3,225	3,225	3,225	3,225	3,225	3,225	–	–	–	3,225	3,225	3,225	3,225	3,225	3,225
	LC	3,225	3,225	3,225	3,225	3,225	3,225	–	–	–	3,225	3,225	3,225	3,225	3,225	3,225
Transport length	2.35	12,200			13,250			13,800			13,700			14,900		
	2.90	12,250			13,250			13,700			13,600			14,900		
	3.80	12,200*			13,250			13,700			13,600			14,900		
	5.00	–			–			–			–			14,900		
Transport height	2.35	3,900	3,900	4,000	3,900	3,900	4,000	3,600	3,650	3,650	3,700	–	–	–	–	–
	2.90	3,950	3,950	4,050	3,950	3,950	4,050	3,700	3,750	3,750	3,800	4,150	4,250	–	–	–
	3.80	3,900	3,900	4,000	4,000	4,000	4,100	3,850	4,050	4,050	4,050	4,250	4,350	–	–	–
	5.00	–	–	–	–	–	–	–	–	–	–	4,350	4,450	–	–	–
Bucket		2.70 m <sup>3</sup>			2.00 m <sup>3</sup>			2.00 m <sup>3</sup>			2.00 m <sup>3</sup>			1.65 m <sup>3</sup>		

\* without bucket

# Backhoe Bucket

## with Mono Boom 6.70 m and Counterweight 9.0 t



### Digging Envelope

without quick coupler		1	2	3
Stick length	m	2.35	2.90	3.80
A Max. reach at ground level	m	11.10	11.50	12.40
B Max. digging depth	m	7.15	7.70	8.60
C Min. dumping height	m	3.60	3.05	3.15
D Max. dumping height	m	7.05	7.30	7.70
E Max. cutting height	m	10.55	10.85	11.30

### Forces

without quick coupler		1	2	3
Stick digging force (ISO 6015)	kN	249	218	182
Bucket digging force (ISO 6015)	kN	316	316	316
Stick digging force (SAE J1179)	kN	235	207	174
Bucket digging force (SAE J1179)	kN	273	273	273

Max. bucket digging force ISO with ripper bucket

345 kN

### Operating Weight and Ground Pressure

The operating weight includes the basic machine with counterweight 9.0 t, mono boom 6.70 m, stick 2.90 m and HD bucket 2.70 m<sup>3</sup> (3,100 kg).

Undercarriage		LC			HD		
		500	600	750	500	600	750
Pad width	mm	500	600	750	500	600	750
Weight	kg	51,400	52,000	53,250	53,500	54,050	54,850
Ground pressure	kg/cm <sup>2</sup>	1.09	0.92	0.75	1.10	0.93	0.75

Undercarriage		LC-V		
		500	600	750
Pad width	mm	500	600	750
Weight	kg	56,050	56,600	57,400
Ground pressure	kg/cm <sup>2</sup>	1.15	0.97	0.79

Optional: counterweight 11.0 t

(counterweight 11.0 t increases the operating weight by 2,000 kg and ground pressure by 0.04 kg/cm<sup>2</sup>) see load tables on page 23



**Buckets Machine stability per ISO 10567\* (75% of tipping capacity)**

	Cutting width mm	Capacity ISO 7451 m <sup>3</sup>	Weight kg	LC-Undercarriage (with track pads 600 mm)			LC-V-Undercarriage (with track pads 600 mm)			HD-Undercarriage (with track pads 600 mm)		
				Stick length (m)			Stick length (m)			Stick length (m)		
				2.35	2.90	3.80	2.35	2.90	3.80	2.35	2.90	3.80
<b>with counterweight 9.0 t</b>												
STD <sup>1)</sup>	1,550	2.00	2,250	▲	▲	▲	▲	▲	▲	▲	▲	▲
	1,750	2.35	2,450	▲	▲	▲	▲	▲	▲	▲	▲	▲
	1,950	2.70	2,650	▲	■	△	▲	▲	△	▲	▲	△
	1,950	3.00	2,750	■	▲	△	▲	■	△	▲	■	△
	2,100	3.30	2,850	▲	■	-	▲	▲	-	■	▲	-
HD <sup>2)</sup>	1,550	2.00	2,650	▲	▲	▲	▲	▲	▲	▲	▲	▲
	1,750	2.35	2,850	▲	▲	▲	▲	▲	■	▲	▲	■
	1,950	2.70	3,100	▲	■	△	▲	▲	△	▲	■	△
	1,950	3.00	3,200	■	■	-	▲	■	-	■	▲	-
	1,950	3.30	3,250	▲	△	-	■	▲	-	▲	■	-
2,100	3.50	3,500	■	△	-	▲	■	-	■	△	-	
<b>with counterweight 11,0 t</b>												
STD <sup>1)</sup>	1,550	2.00	2,250	▲	▲	▲	▲	▲	▲	▲	▲	▲
	1,750	2.35	2,450	▲	▲	▲	▲	▲	▲	▲	▲	▲
	1,950	2.70	2,650	▲	▲	△	▲	▲	△	▲	▲	△
	1,950	3.00	2,750	▲	▲	△	▲	▲	△	▲	▲	△
	2,100	3.30	2,850	▲	■	-	▲	▲	-	▲	■	-
HD <sup>2)</sup>	1,550	2.00	2,650	▲	▲	▲	▲	▲	▲	▲	▲	▲
	1,750	2.35	2,850	▲	▲	■	▲	▲	■	▲	▲	■
	1,950	2.70	3,100	▲	▲	△	▲	▲	△	▲	▲	△
	1,950	3.00	3,200	▲	■	-	▲	▲	-	▲	▲	-
	1,950	3.30	3,250	▲	■	-	▲	▲	-	▲	■	-
2,100	3.50	3,500	■	▲	-	▲	■	-	■	▲	-	

\* Indicated loads are based on ISO 10567, at maximum reach, and may be swung 360° on firm and even ground

<sup>1)</sup> Standard bucket with Liebherr teeth Z 70 (appropriate for materials up to classification 5, according to VOB, Section C, DIN 18300)

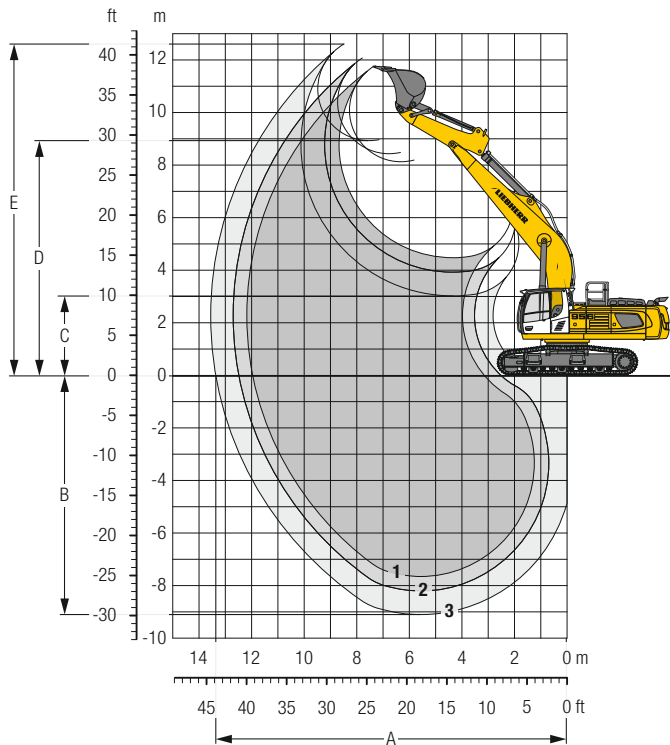
<sup>2)</sup> HD bucket with Liebherr teeth Z 70 (appropriate for materials above classification 6, according to VOB, Section C, DIN 18300)

Other buckets available upon request

Max. material weight ▲ = ≤ 2.0 t/m<sup>3</sup>, ■ = ≤ 1.8 t/m<sup>3</sup>, ▲ = ≤ 1.65 t/m<sup>3</sup>, ■ = ≤ 1.5 t/m<sup>3</sup>, △ = ≤ 1.2 t/m<sup>3</sup>, - = not authorised

# Backhoe Bucket

## with Mono Boom 7.60 m and Counterweight 9.0 t



### Digging Envelope

without quick coupler		1	2	3
Stick length	m	2.35	2.90	3.80
A Max. reach at ground level	m	11.95	12.50	13.35
B Max. digging depth	m	7.65	8.20	9.10
C Min. dumping height	m	4.45	3.90	3.00
D Max. dumping height	m	8.10	8.40	8.90
E Max. cutting height	m	11.70	12.05	12.60

### Forces

without quick coupler		1	2	3
Stick digging force (ISO 6015)	kN	249	218	182
Bucket digging force (ISO 6015)	kN	316	316	316
Stick digging force (SAE J1179)	kN	235	207	174
Bucket digging force (SAE J1179)	kN	273	273	273

Max. bucket digging force ISO with ripper bucket

345 kN

### Operating Weight and Ground Pressure

The operating weight includes the basic machine with counterweight 9.0 t, mono boom 7.60 m, stick 2.90 m and bucket 2.00 m<sup>3</sup> (2,250 kg).

Undercarriage		LC			HD		
		500	600	750	500	600	750
Pad width	mm	500	600	750	500	600	750
Weight	kg	51,000	51,600	52,850	53,100	53,650	54,450
Ground pressure	kg/cm <sup>2</sup>	1.08	0.91	0.74	1.09	0.92	0.74

Undercarriage		LC-V		
		500	600	750
Pad width	mm	500	600	750
Weight	kg	55,650	56,200	57,000
Ground pressure	kg/cm <sup>2</sup>	1.14	0.96	0.78

Optional: counterweight 11.0 t

(counterweight 11.0 t increases the operating weight by 2,000 kg and ground pressure by 0.04 kg/cm<sup>2</sup>) see load tables on page 25



### Buckets Machine stability per ISO 10567\* (75% of tipping capacity)

	Cutting width mm	Capacity ISO 7451 m <sup>3</sup>	Weight kg	LC-Undercarriage (with track pads 600 mm)			LC-V-Undercarriage (with track pads 600 mm)			HD-Undercarriage (with track pads 600 mm)		
				Stick length (m)			Stick length (m)			Stick length (m)		
				2.35	2.90	3.80	2.35	2.90	3.80	2.35	2.90	3.80
<b>with counterweight 9.0 t</b>												
STD <sup>1)</sup>	1,550	2.00	2,250	▲	▲	▲	▲	▲	▲	▲	▲	■
	1,750	2.35	2,450	■	▲	△	▲	▲	▲	▲	■	■
	1,950	2.70	2,650	▲	△	–	■	▲	△	▲	■	△
	1,950	3.00	2,750	△	△	–	▲	△	△	■	△	–
	2,100	3.30	2,850	△	–	–	■	△	–	△	△	–
HD <sup>2)</sup>	1,550	2.00	2,650	▲	■	■	▲	▲	■	▲	▲	▲
	1,750	2.35	2,850	■	■	△	▲	■	■	■	▲	△
	1,950	2.70	3,100	■	△	–	▲	■	△	■	△	–
	1,950	3.00	3,200	△	–	–	■	△	–	△	△	–
<b>with counterweight 11.0 t</b>												
STD <sup>1)</sup>	1,550	2.00	2,250	▲	▲	▲	▲	▲	▲	▲	▲	▲
	1,750	2.35	2,450	▲	▲	▲	▲	▲	▲	▲	▲	▲
	1,950	2.70	2,650	■	▲	△	▲	▲	△	▲	■	△
	1,950	3.00	2,750	▲	■	△	■	▲	△	■	▲	△
	2,100	3.30	2,850	■	△	–	▲	■	–	▲	△	–
HD <sup>2)</sup>	1,550	2.00	2,650	▲	▲	■	▲	▲	■	▲	▲	■
	1,750	2.35	2,850	▲	■	■	▲	▲	■	▲	▲	■
	1,950	2.70	3,100	■	■	△	▲	■	△	■	▲	△
	1,950	3.00	3,200	▲	△	–	■	▲	–	▲	■	–

\* Indicated loads are based on ISO 10567, at maximum reach, and may be swung 360° on firm and even ground

<sup>1)</sup> Standard bucket with Liebherr teeth Z 70 (appropriate for materials up to classification 5, according to VOB, Section C, DIN 18300)

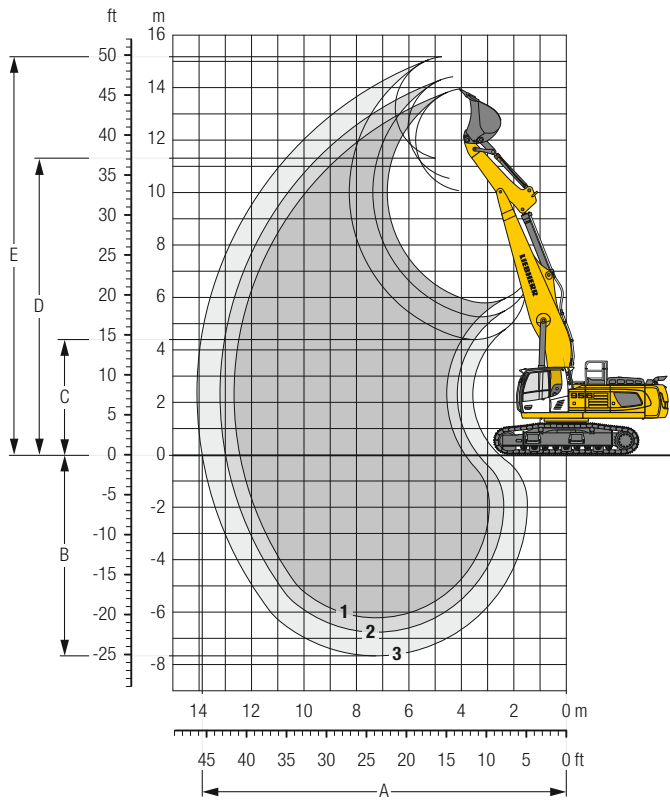
<sup>2)</sup> HD bucket with Liebherr teeth Z 70 (appropriate for materials above classification 6, according to VOB, Section C, DIN 18300)

Other buckets available upon request

Max. material weight ▲ = ≤ 2.0 t/m<sup>3</sup>, ■ = ≤ 1.8 t/m<sup>3</sup>, ▲ = ≤ 1.65 t/m<sup>3</sup>, ■ = ≤ 1.5 t/m<sup>3</sup>, △ = ≤ 1.2 t/m<sup>3</sup>, – = not authorised

# Backhoe Bucket

with Mono Boom Straight 8.00 m and Counterweight 9.0 t



## Digging Envelope

without quick coupler	1	2	3	
Stick length	m	2.35	2.90	3.80
A Max. reach at ground level	m	12.45	13.00	13.90
B Max. digging depth	m	6.20	6.75	7.65
C Min. dumping height	m	5.80	5.25	4.40
D Max. dumping height	m	10.05	10.55	12.30
E Max. cutting height	m	13.95	14.40	15.20

## Forces

without quick coupler	1	2	3	
Stick digging force (ISO 6015)	kN	249	218	182
Bucket digging force (ISO 6015)	kN	316	316	316
Stick digging force (SAE J1179)	kN	235	207	174
Bucket digging force (SAE J1179)	kN	273	273	273

Max. bucket digging force ISO with ripper bucket

345 kN

## Operating Weight and Ground Pressure

The operating weight includes the basic machine with counterweight 9.0 t, mono boom straight 8.00 m, stick 2.90 m and bucket 2.00 m<sup>3</sup> (2,250 kg).

Undercarriage		HD		
Pad width	mm	500	600	750
Weight	kg	53,150	53,700	54,500
Ground pressure	kg/cm <sup>2</sup>	1.09	0.92	0.74

Optional: counterweight 11.0 t

(counterweight 11.0 t increases the operating weight by 2,000 kg and ground pressure by 0.04 kg/cm<sup>2</sup>) see load tables on page 27



## Buckets Machine stability per ISO 10567\* (75% of tipping capacity)

	Cutting width mm	Capacity ISO 7451 m <sup>3</sup>	Weight kg	HD-Undercarriage (with track pads 600 mm)		
				Stick length (m)		
				2.35	2.90	3.80
<b>with counterweight 9.0 t</b>						
STD <sup>1)</sup>	1,350	1.65	2,100	▲	▲	■
	1,550	2.00	2,250	▲	■	■
	1,750	2.35	2,450	■	■	△
	1,950	2.70	2,650	■	△	-
HD <sup>2)</sup>	1,350	1.65	2,350	▲	▲	■
	1,550	2.00	2,650	▲	▲	△
	1,750	2.35	2,850	▲	△	-
	1,950	2.70	3,100	△	-	-
<b>with counterweight 11.0 t</b>						
STD <sup>1)</sup>	1,350	1.65	2,100	▲	▲	▲
	1,550	2.00	2,250	▲	▲	■
	1,750	2.35	2,450	▲	■	■
	1,950	2.70	2,650	■	■	△
HD <sup>2)</sup>	1,350	1.65	2,350	▲	▲	▲
	1,550	2.00	2,650	▲	▲	▲
	1,750	2.35	2,850	▲	▲	△
	1,950	2.70	3,100	▲	△	△

\* Indicated loads are based on ISO 10567, at maximum reach, and may be swung 360° on firm and even ground

<sup>1)</sup> Standard bucket with Liebherr teeth Z 70 (appropriate for materials up to classification 5, according to VOB, Section C, DIN 18300)

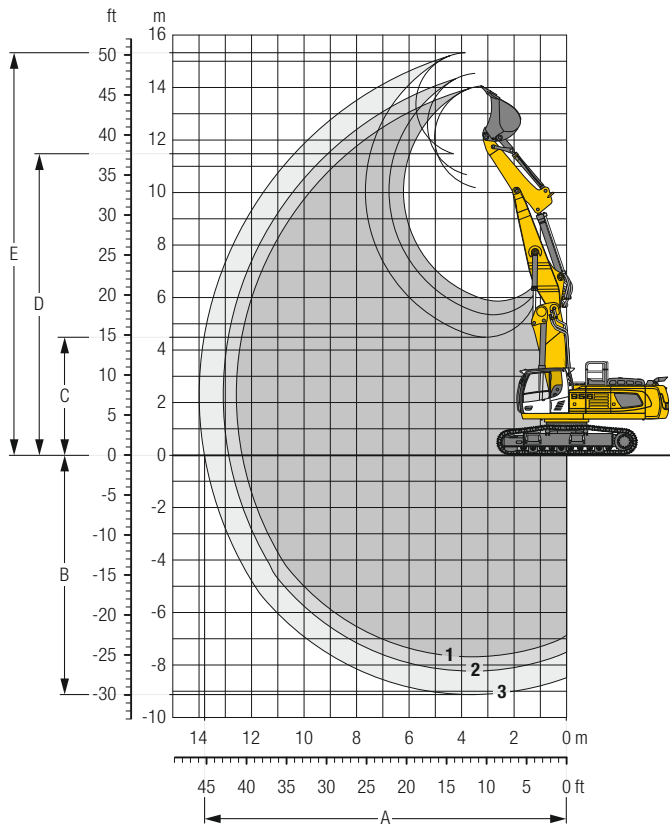
<sup>2)</sup> HD bucket with Liebherr teeth Z 70 (appropriate for materials above classification 6, according to VOB, Section C, DIN 18300)

Other buckets available upon request

Max. material weight ▲ = ≤ 2.0 t/m<sup>3</sup>, ■ = ≤ 1.8 t/m<sup>3</sup>, ▲ = ≤ 1.65 t/m<sup>3</sup>, ■ = ≤ 1.5 t/m<sup>3</sup>, △ = ≤ 1.2 t/m<sup>3</sup>, - = not authorised

# Backhoe Bucket

with Two-Piece Boom 7.90 m (Main Boom 4.70 m) and Counterweight 9.0 t



## Digging Envelope

without quick coupler		1	2	3
Stick length	m	2.35	2.90	3.80
A Max. reach at ground level	m	12.35	12.90	13.80
B Max. digging depth	m	7.70	8.25	9.15
C Min. dumping height	m	5.85	5.35	4.50
D Max. dumping height	m	10.15	10.65	11.45
E Max. cutting height	m	14.05	14.50	15.30

## Forces

without quick coupler		1	2	3
Stick digging force (ISO 6015)	kN	249	218	182
Bucket digging force (ISO 6015)	kN	316	316	316
Stick digging force (SAE J1179)	kN	235	207	174
Bucket digging force (SAE J1179)	kN	273	273	273

Max. bucket digging force ISO with ripper bucket

345 kN

## Operating Weight and Ground Pressure

The operating weight includes the basic machine with counterweight 9.0 t, two-piece boom 7.90 m, stick 2.90 m and bucket 2.00 m<sup>3</sup> (2,250 kg).

Undercarriage		LC			HD		
Pad width	mm	500	600	750	500	600	750
Weight	kg	54,200	54,800	56,050	56,300	56,850	57,650
Ground pressure	kg/cm <sup>2</sup>	1.14	0.96	0.79	1.16	0.97	0.79

Undercarriage		LC-V		
Pad width	mm	500	600	750
Weight	kg	58,850	59,400	60,200
Ground pressure	kg/cm <sup>2</sup>	1.21	1.02	0.83

Optional: counterweight 11.0 t

(counterweight 11.0 t increases the operating weight by 2,000 kg and ground pressure by 0.04 kg/cm<sup>2</sup>) see load tables on pages 30 and 31



## Buckets Machine stability per ISO 10567\* (75% of tipping capacity)

	Cutting width mm	Capacity ISO 7451 m <sup>3</sup>	Weight kg	LC-Undercarriage (with track pads 600 mm)			LC-V-Undercarriage (with track pads 600 mm)			HD-Undercarriage (with track pads 600 mm)		
				Stick length (m)			Stick length (m)			Stick length (m)		
				2.35	2.90	3.80	2.35	2.90	3.80	2.35	2.90	3.80
<b>with counterweight 9.0 t</b>												
STD <sup>1)</sup>	1,350	1.65	2,100	▲	■	■	▲	▲	■	▲	▲	▲
	1,550	2.00	2,250	▲	■	△	▲	■	■	■	▲	△
	1,750	2.35	2,450	△	△	-	▲	■	△	■	△	-
	1,950	2.70	2,650	△	-	-	▲	△	-	△	-	-
HD <sup>2)</sup>	1,350	1.65	2,350	▲	■	△	▲	▲	▲	▲	▲	■
	1,550	2.00	2,650	■	△	-	■	▲	△	■	■	△
	1,750	2.35	2,850	△	-	-	■	△	-	△	△	-
<b>with counterweight 11.0 t</b>												
STD <sup>1)</sup>	1,350	1.65	2,100	▲	▲	▲	▲	▲	▲	▲	▲	▲
	1,550	2.00	2,250	▲	■	■	▲	▲	■	▲	▲	▲
	1,750	2.35	2,450	■	■	△	▲	■	■	■	▲	△
	1,950	2.70	2,650	■	△	-	▲	■	△	▲	△	-
	1,950	3.00	2,750	△	-	-	■	△	-	△	△	-
HD <sup>2)</sup>	1,350	1.65	2,350	▲	▲	■	▲	▲	▲	▲	▲	▲
	1,550	2.00	2,650	▲	■	△	▲	▲	▲	▲	■	■
	1,750	2.35	2,850	▲	△	-	■	▲	△	■	■	△
	1,950	2.70	3,100	△	△	-	▲	△	-	■	△	-

\* Indicated loads are based on ISO 10567, at maximum reach, and may be swung 360° on firm and even ground

<sup>1)</sup> Standard bucket with Liebherr teeth Z 70 (appropriate for materials up to classification 5, according to VOB, Section C, DIN 18300)

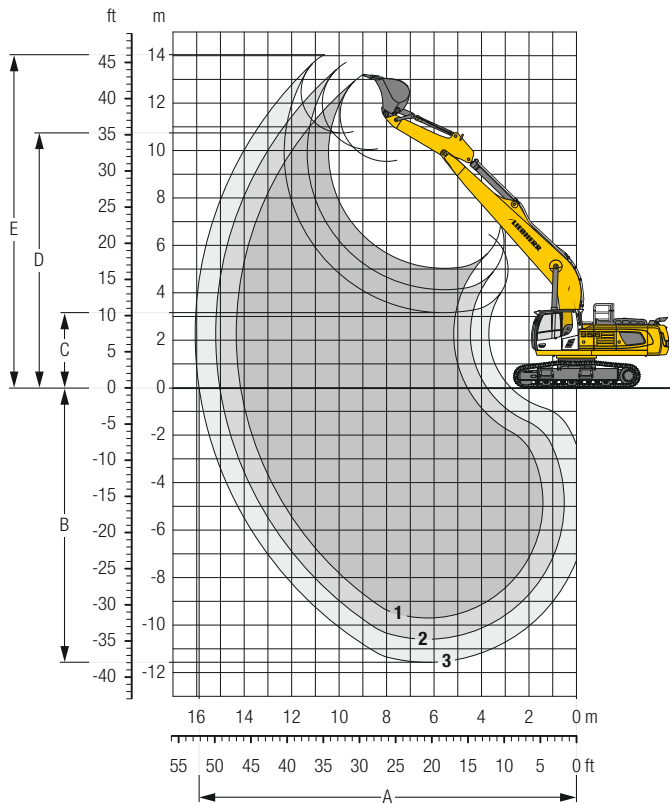
<sup>2)</sup> HD bucket with Liebherr teeth Z 70 (appropriate for materials above classification 6, according to VOB, Section C, DIN 18300)

Other buckets available upon request

Max. material weight ▲ = ≤ 2.0 t/m<sup>3</sup>, ■ = ≤ 1.8 t/m<sup>3</sup>, ▲ = ≤ 1.65 t/m<sup>3</sup>, ■ = ≤ 1.5 t/m<sup>3</sup>, △ = ≤ 1.2 t/m<sup>3</sup>, - = not authorised

# Backhoe Bucket

with Mono Boom 9.20 m and Counterweight 11.0 t



## Digging Envelope

without quick coupler		1	2	3*
Stick length	m	2.90	3.80	5.00
A Max. reach at ground level	m	14.10	15.00	15.90
B Max. digging depth	m	9.70	10.60	11.60
C Min. dumping height	m	5.05	4.15	3.15
D Max. dumping height	m	9.55	10.05	10.75
E Max. cutting height	m	13.15	13.70	14.00

## Forces

without quick coupler		1	2	3*
Stick digging force (ISO 6015)	kN	218	182	149
Bucket digging force (ISO 6015)	kN	316	316	235
Stick digging force (SAE J1179)	kN	207	174	145
Bucket digging force (SAE J1179)	kN	273	273	209

\* with kinematic R 946 Litronic

## Operating Weight and Ground Pressure

The operating weight includes the basic machine with counterweight 11.0 t, mono boom 9.20 m, stick 3.80 m and bucket 1.65 m<sup>3</sup> (2,100 kg).

Undercarriage		LC			LC-V		
		500	600	750	500	600	750
Pad width	mm	500	600	750	500	600	750
Weight	kg	53,200	53,800	55,050	57,850	58,400	59,200
Ground pressure	kg/cm <sup>2</sup>	1.12	0.94	0.77	1.19	1.00	0.81



## Buckets Machine stability per ISO 10567\* (75% of tipping capacity)

	Cutting width mm	Capacity ISO 7451 m <sup>3</sup>	Weight kg	LC-Undercarriage (with track pads 600 mm)			LC-V-Undercarriage (with track pads 600 mm)		
				Stick length (m)			Stick length (m)		
				2.90	3.80	5.00	2.90	3.80	5.00
<b>with counterweight 11.0 t</b>									
STD <sup>1)</sup>	1,350	1.65	2,100	▲	▲	–	▲	▲	–
	1,550	2.00	2,250	■	△	–	■	■	–
	1,750	2.35	2,450	△	–	–	■	△	–
STD <sup>2)</sup>	1,200	1.25	1,300	–	–	▲	–	–	▲
	1,350	1.50	1,400	–	–	▲	–	–	▲
	1,500	1.75	1,500	–	–	▲	–	–	■
	1,650	2.00	1,600	–	–	△	–	–	■

\* Indicated loads are based on ISO 10567, at maximum reach, and may be swung 360° on firm and even ground

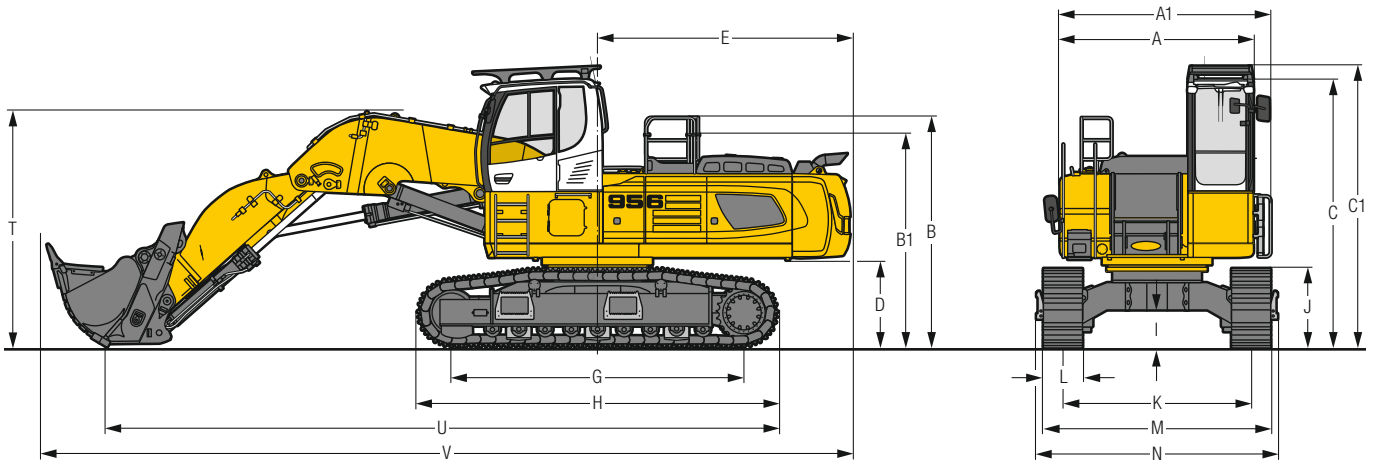
<sup>1)</sup> Standard bucket with Liebherr teeth Z 70 (appropriate for materials up to classification 5, according to VOB, Section C, DIN 18300)

<sup>2)</sup> Standard bucket from R 946 Litronic with Liebherr teeth Z 50 (appropriate for materials up to classification 5, according to VOB, Section C, DIN 18300)

Other buckets available upon request

Max. material weight ▲ = ≤ 2.0 t/m<sup>3</sup>, ■ = ≤ 1.8 t/m<sup>3</sup>, ▲ = ≤ 1.65 t/m<sup>3</sup>, ■ = ≤ 1.5 t/m<sup>3</sup>, △ = ≤ 1.2 t/m<sup>3</sup>, – = not authorised

# Dimensions Front Shovel



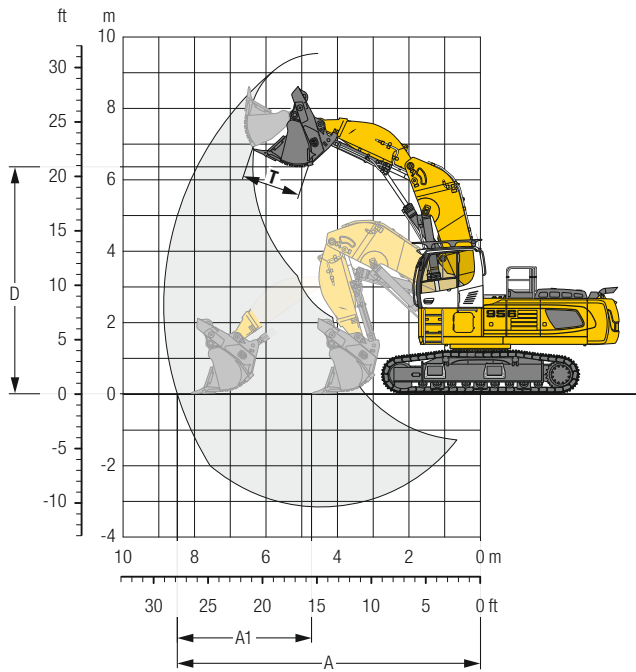
	HD	mm
<b>A</b>	Uppercarriage width	2,970
<b>A1</b>	Uppercarriage width with catwalks	3,030
<b>B</b>	Uppercarriage height	3,555
<b>B1</b>	Uppercarriage height (handrails folded)	3,305
<b>C</b>	Cab height	4,135
<b>C1</b>	Cab height with FOPS top guard	4,335
<b>D</b>	Counterweight ground clearance	1,355
<b>E</b>	Rear-end length	3,900
<b>G</b>	Wheelbase	4,500
<b>H</b>	Undercarriage length	5,550

	HD	mm
<b>I</b>	Undercarriage ground clearance	575
<b>J</b>	Track height	1,225
<b>K</b>	Track gauge	2,900
<b>L</b>	Track pad width	500 600 750
<b>M</b>	Width over tracks	3,465 3,500 3,650
<b>N</b>	Width over steps	3,725 3,725 3,725
<b>T</b>	Boom height	3,650
<b>U</b>	Length on ground	10,350
<b>V</b>	Overall length	12,450

## Transport Dimensions removable elements disassembled

	Shovel Equipment mm		
Pad width	500	600	750
Transport width	3,725	3,725	3,725
Transport length		12,450	
Transport height		3,650	
Shovel		3.10 m <sup>3</sup>	

# Front Shovel



## Digging Envelope

<b>A</b> Max. reach at ground level	<b>m</b>	8.50
<b>A1</b> Max. crowd length	<b>m</b>	3.40
<b>D</b> Max. dumping height	<b>m</b>	6.30
<b>T</b> Bucket opening width	<b>mm</b>	1,640

## Forces

<b>Max. crowd force</b>	<b>kN</b>	435
<b>Max. crowd force at ground level</b>	<b>kN</b>	275
<b>Max. breakout force</b>	<b>kN</b>	355

## Operating Weight and Ground Pressure

The operating weight includes the basic machine with cab elevation, shovel equipment and front shovel 3.10 m<sup>3</sup> (5,650 kg), level II.

Undercarriage	HD	
<b>Pad width</b>	<b>mm</b>	500   600
<b>Weight</b>	<b>kg</b>	56,750   57,300
<b>Ground pressure</b>	<b>kg/cm<sup>2</sup></b>	1.17   0.98

## Front Shovels

Cutting width mm	Capacity ISO 7451 m <sup>3</sup>	Weight kg	Wear kit level	HD-Undercarriage	
				500 mm	600 mm
1,850	2.50	4,700	II	▲	▲
1,850	2.50	5,050	III	▲	▲
2,150	3.10	5,150	I	■	■
2,150	3.10	5,650	II	■	■
2,150	3.10	6,050	III	■	■

Level I: For non-abrasive materials, such as limestone without flint inclusion, shot material or easily breakable rock, i.e., deteriorated rock, soft limestone, shale, etc.

Level II: For pre-blasted heavy rock, or deteriorated, cracked material (classification 3 to 4, accord. to DIN 18300)

Level III: For highly-abrasive materials such as rock with a high silica content, sandstone etc.

Max. material weight ▲ = ≤ 2.0 t/m<sup>3</sup>, ■ = ≤ 1.8 t/m<sup>3</sup>



# Lift Capacities

with Mono Boom 6.70 m, Counterweight 9.0 t and Track Pads 600 mm

## Stick 2.35 m

Under-carriage	m	3.0 m		4.5 m		6.0 m		7.5 m		9.0 m		10.5 m		m
		LC	LC-V	LC	LC-V	LC	LC-V	LC	LC-V	LC	LC-V	LC	LC-V	
9.0														6.2
7.5														7.6
6.0														8.4
4.5				21.2*	21.2*	13.0*	13.0*	10.3*	10.3*					9.0
3.0						13.8	17.1*	10.2	13.6*	7.8	11.8*			9.2
1.5						13.1	18.5*	9.8	14.4*	7.6	11.8			9.2
0						12.8	18.9*	9.5	14.8*					9.0
-1.5	13.7*	13.7*	14.5*	14.5*	12.8	18.9*	9.5	14.8*						8.4
-3.0	26.2*	26.2*	20.3	21.2*	12.8	18.3*	9.5	14.4*						7.5
-4.5			16.6*	16.6*	12.3*	12.3*								6.1
-6.0														

## Stick 2.90 m

Under-carriage	m	3.0 m		4.5 m		6.0 m		7.5 m		9.0 m		10.5 m		m
		LC	LC-V	LC	LC-V	LC	LC-V	LC	LC-V	LC	LC-V	LC	LC-V	
9.0														6.9
7.5														8.2
6.0														9.0
4.5				18.8*	18.8*	14.0*	14.0*	10.4*	10.4*	7.0*	7.0*			9.5
3.0				15.2*	15.2*	14.1	16.3*	10.3	13.0*	7.8	11.2*			9.8
1.5				11.6*	11.6*	13.3	18.0*	9.8	14.0*	7.6	11.7			9.8
0				17.6*	17.6*	12.8	18.8*	9.5	14.6*	7.4	11.6			9.5
-1.5	14.6*	14.6*	15.5*	15.5*	12.7	18.6*	9.3	14.5*						9.0
-3.0	25.0*	25.0*	20.0	22.6*	12.9	17.3*	9.5	13.4*						8.2
-4.5	24.6*	24.6*	18.8*	18.8*	13.3	14.3*								6.9
-6.0														

## Stick 3.80 m

Under-carriage	m	3.0 m		4.5 m		6.0 m		7.5 m		9.0 m		10.5 m		m
		LC	LC-V	LC	LC-V	LC	LC-V	LC	LC-V	LC	LC-V	LC	LC-V	
9.0														8.1
7.5														9.2
6.0														9.9
4.5						12.3*	12.3*	10.6*	10.6*	8.3	9.7*			10.4
3.0				20.8*	20.8*	14.6	14.8*	10.5	12.0*	8.0	10.4*	6.1*	6.1*	10.6
1.5				19.6*	19.6*	13.6	16.9*	9.9	13.2*	7.6	11.2*	6.0	6.5*	10.6
0	7.3*	7.3*	19.6*	19.6*	13.0	18.3*	9.5	14.2*	7.4	11.5				10.4
-1.5	13.5*	13.5*	19.5	24.6*	12.7	18.7*	9.3	14.5*	7.2	11.4				9.9
-3.0	20.2*	20.2*	19.6	24.3*	12.6	18.1*	9.2	14.1*	7.3	10.8*				9.2
-4.5	29.0*	29.0*	20.1	21.6*	12.9	16.3*	9.5	12.4*						8.1
-6.0	22.5*	22.5*	16.5*	16.5*	12.0*	12.0*								6.4

Height 
 Can be slewed through 360° 
 In longitudinal position of undercarriage 
 Max. reach 
 \* Limited by hydr. capacity

The load values are quoted in tons (t) at stick end (without bucket), and may be swung 360° on firm and even ground. Adjacent values are valid for the undercarriage when in the longitudinal position. Capacities are valid for 600 mm wide track pads. Indicated loads are based on ISO 10567 standard and do not exceed 75% of tipping or 87% of hydraulic capacity (indicated via \*). Without bucket cylinder, link and lever the lift capacities will increase by 825 kg. Lifting capacity of the excavator is limited by machine stability and hydraulic capacity.

According to European Standard, EN 474-5: In the European Union excavators have to be equipped with an overload warning device, a load diagram and automatic safety check valves on hoist cylinders and stick cylinder(s), when they are used for lifting operations which require the use of lifting accessories.

# Lift Capacities

with Mono Boom 6.70 m, Counterweight 11.0 t and Track Pads 600 mm

## Stick 2.35 m

Under-carriage	m	3.0 m		4.5 m		6.0 m		7.5 m		9.0 m		10.5 m		m	
		LC	LC-V	LC	LC-V	LC	LC-V	LC	LC-V	LC	LC-V	LC	LC-V		
9.0													10.3*	10.3*	6.2
7.5													9.3*	9.3*	7.6
6.0													8.9*	8.9*	8.4
4.5				21.2*	21.2*	13.0*	13.0*	11.7*	11.7*				8.9*	8.9*	9.0
3.0						15.5	17.1*	11.4	13.6*	8.8	11.8*		8.5	9.1*	9.2
1.5						14.8	18.5*	11.0	14.4*	8.6	12.1*		8.3	9.7*	9.2
0						14.5	18.9*	10.8	14.8*				8.6	10.8*	9.0
-1.5	13.7*	13.7*	14.5*	14.5*	14.5	18.9*	10.8	14.8*					9.3	12.4*	8.4
-3.0	26.2*	26.2*	21.2*	21.2*	14.7	16.6*	11.0	12.5*					11.0	12.5*	7.5
-4.5			16.6*	16.6*	12.3*	12.3*							11.9*	11.9*	6.1
-6.0															

## Stick 2.90 m

Under-carriage	m	3.0 m		4.5 m		6.0 m		7.5 m		9.0 m		10.5 m		m		
		LC	LC-V	LC	LC-V	LC	LC-V	LC	LC-V	LC	LC-V	LC	LC-V			
9.0													10.4*	10.4*	6.9	
7.5													10.8*	10.8*	8.2	
6.0													10.8*	10.8*	9.0	
4.5				18.8*	18.8*	14.0*	14.0*	11.8*	11.8*	7.0*	7.0*		9.1	10.7*	9.5	
3.0						15.2*	15.2*	15.8	16.3*	11.5	13.0*	8.8	11.2*	7.0*	7.0*	9.8
1.5						11.6*	11.6*	14.9	18.0*	11.0	14.0*	8.6	11.8*	7.5*	7.5*	9.8
0						17.6*	17.6*	14.5	18.8*	10.7	14.6*	8.4	12.0*	7.8	8.2*	9.5
-1.5	14.6*	14.6*	22.2	24.7*	14.4	18.6*	10.6	14.5*					9.3	10.9*	9.0	
-3.0	25.0*	25.0*	22.5	22.6*	14.5	17.3*	10.7	13.4*					11.7*	11.7*	8.2	
-4.5	24.6*	24.6*	18.8*	18.8*	14.3*	14.3*							11.7*	11.7*	6.9	
-6.0																

## Stick 3.80 m

Under-carriage	m	3.0 m		4.5 m		6.0 m		7.5 m		9.0 m		10.5 m		m		
		LC	LC-V	LC	LC-V	LC	LC-V	LC	LC-V	LC	LC-V	LC	LC-V			
9.0													5.4*	5.4*	8.1	
7.5										6.4*	6.4*		5.0*	5.0*	9.2	
6.0										9.5*	9.5*		4.8*	4.8*	9.9	
4.5						12.3*	12.3*	10.6*	10.6*	9.3	9.7*		4.8*	4.8*	10.4	
3.0				20.8*	20.8*	14.8*	14.8*	11.8	12.0*	9.0	10.4*	6.1*	4.9*	4.9*	10.6	
1.5				19.6*	19.6*	15.3	16.9*	11.2	13.2*	8.6	11.2*	6.5*	5.2*	5.2*	10.6	
0				7.3*	7.3*	19.6*	19.6*	14.7	18.3*	10.8	14.2*	8.4	11.7*	5.7*	5.7*	10.4
-1.5	13.5*	13.5*	22.0	24.6*	14.3	18.7*	10.5	14.5*	8.2	11.8*			6.4*	6.4*	9.9	
-3.0	20.2*	20.2*	22.2	24.3*	14.3	18.1*	10.5	14.1*	8.3	10.8*			7.7*	7.7*	9.2	
-4.5	29.0*	29.0*	21.6*	21.6*	14.6	16.3*	10.7	12.4*					9.8	10.2*	8.1	
-6.0	22.5*	22.5*	16.5*	16.5*	12.0*	12.0*							10.6*	10.6*	6.4	

Height  
 Can be slewed through 360°  
 In longitudinal position of undercarriage  
 Max. reach  
 \* Limited by hydr. capacity

The load values are quoted in tons (t) at stick end (without bucket), and may be swung 360° on firm and even ground. Adjacent values are valid for the undercarriage when in the longitudinal position. Capacities are valid for 600 mm wide track pads. Indicated loads are based on ISO 10567 standard and do not exceed 75% of tipping or 87% of hydraulic capacity (indicated via \*). Without bucket cylinder, link and lever the lift capacities will increase by 825 kg. Lifting capacity of the excavator is limited by machine stability and hydraulic capacity.

According to European Standard, EN 474-5: In the European Union excavators have to be equipped with an overload warning device, a load diagram and automatic safety check valves on hoist cylinders and stick cylinder(s), when they are used for lifting operations which require the use of lifting accessories.

# Lift Capacities

with Mono Boom 7.60 m, Counterweight 9.0 t and Track Pads 600 mm

## Stick 2.35 m

Under-carriage	3.0 m		4.5 m		6.0 m		7.5 m		9.0 m		10.5 m		m				
	m	m	m	m	m	m	m	m	m	m	m						
LC	10.5												9.9*	9.9*	7.5		
	9.0															8.6	
	7.5															8.7	
	6.0			18.2*	18.2*	13.3*	13.3*	10.7	11.2*							7.3	8.9*
	4.5					13.7	15.5*	10.1	12.2*	7.7	10.5*					6.5	8.9*
	3.0					12.5	17.4*	9.5	13.2*	7.4	11.0*					6.1	9.1*
	1.5					12.0	16.7*	9.0	13.9*	7.1	11.2					6.0	9.4
	0					11.9	17.8*	8.8	14.0*	7.0	11.1					6.1	9.7
	-1.5			13.0*	13.0*	12.0	17.0*	8.8	13.7*	7.0	11.1*					6.6	10.3*
	-3.0			18.4*	18.4*	12.3	15.5*	9.0	12.5*							7.5	10.2*
-4.5			15.4*	15.4*	12.7	12.9*									9.5	9.6*	
-6.0																	
LC-V	10.5															9.8*	9.8*
	9.0															9.1*	9.1*
	7.5															7.9	8.9*
	6.0					13.5*	13.5*	11.3*	11.3*	8.8	10.2*					6.2	8.9*
	4.5					14.9	15.7*	11.0	12.3*	8.5	10.6*					7.8	9.1*
	3.0					13.8	17.5*	10.4	13.3*	8.1	11.1*					6.7	9.6*
	1.5					13.3	17.1*	10.0	13.9*	7.9	11.4*					6.9	10.2*
	0					13.3	17.7*	9.8	14.0*	7.7	11.5*					7.4	10.3*
	-1.5			14.5*	14.5*	13.3	16.9*	9.8	13.6*	7.8	11.0*					8.5	10.1*
	-3.0			18.2*	18.2*	13.6	15.3*	10.0	12.4*							9.6*	9.6*
-4.5			15.0*	15.0*	12.5*	12.5*											
-6.0																	
HD	10.5															9.9*	9.9*
	9.0															9.0	9.2*
	7.5															7.6	8.9*
	6.0					13.3*	13.3*	11.2*	11.2*	8.4	10.1*					6.9	8.9*
	4.5					14.3	15.5*	10.6	12.2*	8.1	10.5*					6.5	9.1*
	3.0					13.2	17.4*	9.9	13.2*	7.8	11.0*					6.3	9.5*
	1.5					12.7	16.8*	9.5	13.9*	7.5	11.4*					6.5	10.2*
	0					12.6	17.8*	9.3	14.0*	7.3	11.5*					7.0	10.3*
	-1.5			13.2*	13.2*	12.7	16.9*	9.3	13.6*	7.3	11.1*					8.0	10.2*
	-3.0			18.4*	18.4*	12.9	15.4*	9.4	12.5*							9.6*	9.6*
-4.5			15.3*	15.3*	12.8*	12.8*											
-6.0																	

## Stick 2.90 m

Under-carriage	3.0 m		4.5 m		6.0 m		7.5 m		9.0 m		10.5 m		m				
	m	m	m	m	m	m	m	m	m	m	m						
LC	10.5												9.6*	9.6*		7.6*	7.6*
	9.0															7.1*	7.1*
	7.5															6.6	6.9*
	6.0									12.3*	12.3*					6.0	6.8*
	4.5									14.1	14.5*					5.8	9.1
	3.0									12.9	16.6*					5.5	7.3*
	1.5									12.1	17.7*					5.6	7.9*
	0									11.9	17.9*					6.0	8.9*
	-1.5									11.9	17.3*					8.2	9.4*
	-3.0			17.0*	17.0*	14.9*	14.9*	11.9	17.3*	8.7	13.8*					8.2	9.4*
-4.5			20.6*	20.6*	17.2*	17.2*	12.4	14.0*	9.1	11.0*					8.2*	8.2*	
-6.0									9.7*	9.7*							
LC-V	10.5															8.6*	8.6*
	9.0															7.5*	7.5*
	7.5															6.9*	6.9*
	6.0									12.5*	12.5*					6.3	7.2*
	4.5									14.7*	14.7*					6.2	6.9*
	3.0									14.1	16.7*					5.9	7.0*
	1.5									13.4	17.8*					5.8	7.4*
	0									13.2	17.9*					6.3	8.0*
	-1.5									13.2	17.3*					6.7	9.0*
	-3.0			17.8*	17.8*	15.7*	15.7*	13.2	17.3*	9.6	13.7*					7.6	9.6*
-4.5			20.2*	20.2*	16.9*	16.9*	13.7*	13.7*	10.1	10.7*					8.1*	8.1*	
-6.0									9.2*	9.2*							
HD	10.5															9.6*	9.6*
	9.0															8.8*	8.8*
	7.5															8.6	9.3*
	6.0									12.4*	12.4*					8.5	9.5*
	4.5									14.5*	14.5*					8.1	10.0*
	3.0									13.5	16.6*					7.8	10.6*
	1.5									12.8	17.7*					6.0	9.6*
	0									12.5	17.9*					5.9	7.3*
	-1.5									12.5	17.3*					6.3	8.9*
	-3.0			17.1*	17.1*	15.0*	15.0*	12.5	17.3*	9.1	13.8*					7.1	9.6*
-4.5			20.5*	20.5*	17.1*	17.1*	13.1	13.9*	9.6	10.9*					8.7	9.4*	
-6.0									12.3*	12.3*					8.2*	8.2*	

## Stick 3.80 m

Under-carriage	3.0 m		4.5 m		6.0 m		7.5 m		9.0 m		10.5 m		m				
	m	m	m	m	m	m	m	m	m	m	m						
LC	10.5												5.9*	5.9*	8.0		
	9.0									7.5*	7.5*				5.3*	5.3*	
	7.5									8.3*	8.3*				5.0*	5.0*	
	6.0									8.3	8.6*				6.3	8.1*	
	4.5									9.5*	9.5*				4.8*	4.8*	
	3.0			18.0*	18.0*	13.0*	13.0*	10.6	10.6*	7.9	9.3*				6.1	8.5*	
	1.5					13.5	15.3*	9.8	11.9*	7.5	10.0*				4.9*	4.9*	
	0					12.5	17.0*	9.2	13.0*	7.1	10.7*				4.9	5.1*	
	-1.5			9.5*	9.5*	12.0	17.8*	8.8	13.6*	6.9	11.0				5.5	5.5*	
	-3.0			8.1*	8.1*	14.8*	14.8*	11.8	17.7*	8.6	13.8*				5.2	6.1*	
-4.5			21.3*	21.3*	19.0	19.7*	12.1	15.4*	8.8	12.2*				6.7	8.6*		
-6.0			20.6*	20.6*	16.0*	16.0*	12.6	12.6*	9.2	9.5*				8.4*	8.4*		
LC-V	10.5															5.8*	5.8*
	9.0															5.2*	5.2*
	7.5															4.9*	4.9*
	6.0															8.7*	8.7*
	4.5									9.5*	9.5*					6.9	8.3*
	3.0									14.7	15.4*					8.3	10.1*
	1.5									13.7	17.1*					6.3	9.2*
	0									9.9*	9.9*					6.1	9.4*
	-1.5			8.7*	8.7*	15.3*	15.3*	13.1	17.7*	9.6	13.8*					5.8	6.1*
	-3.0			14.9*	14.9*	20.6	22.0*	13.1	16.9*	9.6	13.3*					6.4	7.1*
-4.5			21.9*	21.9*	19.5*	19.5*	13.4	15.2*	9.8	12.1*					7.5	8.8*	
-6.0			20.0*	20.0*	15.6*	15.6*	12.2*										



# Lift Capacities

with Mono Boom 7.60 m, Counterweight 11.0 t and Track Pads 600 mm

## Stick 2.35 m

Under-carriage	m	3.0 m		4.5 m		6.0 m		7.5 m		9.0 m		10.5 m		m
LC	10.5													
LC	9.0													
LC	7.5													
LC	6.0			18.2*	18.2*	13.3*	13.3*	11.2*	11.2*					
LC	4.5					15.4	15.5*	11.3	12.2*	8.7	10.5*			
LC	3.0					14.2	17.4*	10.7	13.2*	8.4	11.0*			
LC	1.5					13.7	16.7*	10.3	13.9*	8.1	11.4*			
LC	0					13.6	17.8*	10.1	14.0*	8.0	11.5*			
LC	-1.5			13.0*	13.0*	13.7	17.0*	10.0	13.7*	8.0	11.1*			
LC	-3.0			18.4*	18.4*	13.9	15.5*	10.2	12.5*					
LC	-4.5			15.4*	15.4*	12.9*	12.9*							
LC	-6.0													
LC-V	10.5													
LC-V	9.0													
LC-V	7.5													
LC-V	6.0					13.5*	13.5*	11.3*	11.3*	9.8	10.2*			
LC-V	4.5					15.7*	15.7*	12.3	12.3*	9.5	10.6*			
LC-V	3.0					15.5	17.5*	11.7	13.3*	9.1	11.1*			
LC-V	1.5					15.0	17.1*	11.2	13.9*	8.9	11.4*			
LC-V	0					14.9	17.7*	11.0	14.0*	8.7	11.5*			
LC-V	-1.5			14.5*	14.5*	15.0	16.9*	11.0	13.6*	8.8	11.0*			
LC-V	-3.0			18.2*	18.2*	15.3	15.3*	11.2	12.4*					
LC-V	-4.5			15.0*	15.0*	12.5*	12.5*							
LC-V	-6.0													
HD	10.5													
HD	9.0													
HD	7.5													
HD	6.0					13.3*	13.3*	11.2*	11.2*	9.4	10.1*			
HD	4.5					15.5*	15.5*	11.8	12.2*	9.1	10.5*			
HD	3.0					14.9	17.4*	11.2	13.2*	8.8	11.0*			
HD	1.5					14.4	16.8*	10.8	13.9*	8.5	11.4*			
HD	0					14.3	17.8*	10.5	14.0*	8.3	11.5*			
HD	-1.5			13.2*	13.2*	14.3	16.9*	10.5	13.6*	8.3	11.1*			
HD	-3.0			18.4*	18.4*	14.6	15.4*	10.7	12.5*					
HD	-4.5			15.3*	15.3*	12.8*	12.8*							
HD	-6.0													

## Stick 2.90 m

Under-carriage	m	3.0 m		4.5 m		6.0 m		7.5 m		9.0 m		10.5 m		m
LC	10.5													
LC	9.0													
LC	7.5													
LC	6.0													
LC	4.5							12.3*	12.3*	10.5*	10.5*	9.3	9.4*	
LC	3.0							14.5	16.6*	10.8	12.7*	8.4	10.6*	
LC	1.5							13.8	17.7*	10.3	13.5*	8.1	11.1*	
LC	0							13.5	17.9*	10.0	13.9*	7.9	11.4*	
LC	-1.5							13.5	17.3*	9.9	13.8*	7.8	11.2*	
LC	-3.0	17.0*	17.0*			14.9*	14.9*	13.7	16.1*	10.0	12.8*	7.9	10.2*	
LC	-4.5	20.6*	20.6*			12.4*	12.4*	14.0*	14.0*	10.4	11.0*			
LC	-6.0							9.7*	9.7*					
LC-V	10.5													
LC-V	9.0													
LC-V	7.5													
LC-V	6.0					16.5*	16.5*	12.5*	12.5*	10.6*	10.6*	9.3*	9.3*	
LC-V	4.5					15.7*	15.7*	12.5*	12.5*	10.6*	10.6*	9.6*	9.6*	
LC-V	3.0					15.8	16.7*	11.8	12.8*	9.1	10.7*	7.3	9.4*	
LC-V	1.5					15.1	17.8*	11.3	13.6*	8.8	11.2*	7.1	9.6*	
LC-V	0					14.9	17.9*	11.0	13.9*	8.6	11.4*	7.0	9.4*	
LC-V	-1.5					15.7*	15.7*	14.9	17.3*	10.9	13.7*	8.6	11.1*	
LC-V	-3.0	17.8*	17.8*			15.0*	15.0*	15.0	16.0*	11.0	12.8*	8.7	10.1*	
LC-V	-4.5	20.2*	20.2*			16.9*	16.9*	13.7*	13.7*	10.7*	10.7*			
LC-V	-6.0							9.2*	9.2*					
HD	10.5													
HD	9.0													
HD	7.5													
HD	6.0													
HD	4.5													
HD	3.0							12.4*	12.4*	10.5*	10.5*	9.5	9.5*	
HD	1.5							14.5*	14.5*	11.6*	11.6*	9.1	10.0*	
HD	0							15.2	16.6*	11.3	12.7*	8.8	10.6*	
HD	-1.5							14.5	17.7*	10.8	13.6*	8.5	11.1*	
HD	-3.0							14.2	17.9*	10.5	13.9*	8.3	11.4*	
HD	-4.5							14.2	17.3*	10.4	13.8*	8.2	11.2*	
HD	-6.0	17.1*	17.1*			15.0*	15.0*	14.4	16.1*	10.5	12.9*	8.3	10.2*	
HD	-6.0	20.5*	20.5*			17.1*	17.1*	13.9*	13.9*	10.8	10.9*			

## Stick 3.80 m

Under-carriage	m	3.0 m		4.5 m		6.0 m		7.5 m		9.0 m		10.5 m		m
LC	10.5													
LC	9.0													
LC	7.5													
LC	6.0													
LC	4.5													
LC	3.0													
LC	1.5													
LC	0													
LC	-1.5	8.1*	8.1*	14.8*	14.8*	13.4	17.7*	9.9	13.8*	7.7	11.2*	6.3	9.3*	
LC	-3.0	14.3*	14.3*	21.1	21.6*	13.5	17.0*	9.8	13.4*	7.7	10.8*			
LC	-4.5	21.3*	21.3*	19.7*	19.7*	13.7	15.4*	10.0	12.2*	7.9	9.5*			
LC	-6.0	20.6*	20.6*	16.0*	16.0*	12.6*	12.6*	9.5*	9.5*					
LC-V	10.5													
LC-V	9.0													
LC-V	7.5													
LC-V	6.0													
LC-V	4.5													
LC-V	3.0													
LC-V	1.5													
LC-V	0													
LC-V	-1.5	8.7*	8.7*	15.3*	15.3*	14.8	17.7*	10.8	13.8*	8.5	11.2*	6.9	9.3*	
LC-V	-3.0	14.9*	14.9*	22.0*	22.0*	14.8	16.9*	10.8	13.3*	8.5	10.8*			
LC-V	-4.5	21.9*	21.9*	19.5*	19.5*	15.1	15.2*	11.0	12.1*	8.7	9.3*			
LC-V	-6.0	20.0*	20.0*	15.6*	15.6*	12.2*	12.2*	9.1*	9.1*					
HD	10.5													
HD	9.0													
HD	7.5													
HD	6.0													
HD	4.5													
HD	3.0													
HD	1.5													
HD	0													
HD	-1.5	8.2*	8.2*	14.9*	14.9*	14.1	17.7*	10.3	13.8*	8.1	11.2*	6.6	9.3*	
HD	-3.0	14.4*	14.4*	21.7*	21.7*	14.1	17.0*	10.3	13.4*	8.1	10.8*			
HD	-4.5	21.4*	21.4*	19.7*	19.7*	14.4	15.4*	10.5	12.2*	8.3	9.4*			
HD	-6.0	20.5*	20.5*	15.9*	15.9*	12.5*	12.5*	9.4*	9.4*					

Height Can be slewed through 360° In longitudinal position of undercarriage Max. reach \* Limited by hydr. capacity

The load values are quoted in tons (t) at stick end (without bucket), and may be swung 360° on firm and even ground. Adjacent values are valid for the undercarriage when in the longitudinal position. Capacities are valid for 600 mm wide track pads. Indicated loads are based on ISO 10567 standard and do not exceed 75% of tipping or 87% of hydraulic capacity (indicated via \*). Without bucket cylinder, link and lever the lift capacities will increase by 825 kg. Lifting capacity of the excavator is limited by machine stability and hydraulic capacity.

According to European Standard, EN 474-5: In the European Union excavators have to be equipped with an overload warning device, a load diagram and automatic safety check valves on hoist cylinders and stick cylinder(s), when they are used for lifting operations which require the use of lifting accessories.

# Lift Capacities

with Mono Boom Straight 8.00 m, Counterweight 9.0 t and Track Pads 600 mm

## Stick 2.35 m

Under-carriage	m	4.5 m		6.0 m		7.5 m		9.0 m		10.5 m		12.0 m		m
		HD	HD	HD	HD	HD	HD	HD	HD	HD	HD	HD	HD	
12.0														
10.5				15.0*	15.0*									11.9*
9.0				14.7*	14.7*	11.6	12.8*							9.7
7.5	20.0*	20.0*	15.4*	15.4*	11.3	12.9*	8.3	11.3*						7.8
6.0			14.9	16.7*	10.8	13.4*	8.1	11.4*						6.8
4.5					10.1	13.9*	7.8	11.5*						6.2
3.0					9.5	14.1*	7.5	11.6*	6.0	9.6				5.9
1.5					9.1	13.8*	7.2	11.3*	5.9	9.2*				5.8
0					9.0	12.9*	7.1	10.6*						6.0
-1.5			12.5*	12.5*	9.1	11.3*	7.2	9.3*						6.4
-3.0			9.9*	9.9*	9.0*	9.0*	6.7*	6.7*						5.9*
-4.5														5.9*

## Stick 2.90 m

Under-carriage	m	4.5 m		6.0 m		7.5 m		9.0 m		10.5 m		12.0 m		m
		HD	HD	HD	HD	HD	HD	HD	HD	HD	HD	HD	HD	
12.0														
10.5														11.7*
9.0				14.0*	14.0*									8.9*
7.5	15.3*	15.3*	14.7*	14.7*	11.8	12.1*								7.8*
6.0			15.3	16.0*	10.9	12.9*	8.2	11.0*	6.3	8.6*				6.1
4.5			13.9	17.4*	10.2	13.6*	7.8	11.3*	6.1	9.7*				5.6
3.0					9.6	14.0*	7.5	11.4*	6.0	9.5				5.4
1.5					9.2	13.9*	7.2	11.3*	5.8	9.4*				5.3
0					12.2	15.4*	8.9	13.2*	7.0	10.8*	5.7	8.7*		5.4
-1.5			12.3	13.8*	8.9	11.9*	7.0	9.7*	5.8	7.2*				5.8
-3.0			11.2*	11.2*	9.1	9.8*	7.1	7.8*						5.9*
-4.5			7.8*	7.8*	6.7*	6.7*								5.1*

## Stick 3.80 m

Under-carriage	m	4.5 m		6.0 m		7.5 m		9.0 m		10.5 m		12.0 m		m
		HD	HD	HD	HD	HD	HD	HD	HD	HD	HD	HD	HD	
12.0				10.9*	10.9*									7.3*
10.5						10.3*	10.3*							6.0*
9.0						10.6*	10.6*	8.8	9.8*					5.4*
7.5				10.6*	10.6*	11.2*	11.2*	8.7	10.2*	6.5	8.2*			5.1*
6.0	18.0*	18.0*	14.7*	14.7*	11.3	12.2*	8.4	10.5*	6.4	9.3*				4.9*
4.5			14.6	16.4*	10.5	13.0*	8.0	10.9*	6.2	9.4*				4.8*
3.0			13.4	17.7*	9.8	13.6*	7.6	11.2*	6.0	9.5*	4.8	6.3*		4.7
1.5			12.5	17.9*	9.3	13.9*	7.2	11.3*	5.8	9.4	4.7	6.4*		4.7
0			12.2	17.0*	9.0	13.6*	7.0	11.0*	5.6	9.1*				4.8
-1.5	9.9*	9.9*	12.1	15.5*	8.8	12.7*	6.9	10.3*	5.6	8.3*				5.0
-3.0	14.8*	14.8*	12.3	13.2*	8.9	11.1*	6.9	9.0*	5.7	6.7*				5.5
-4.5	10.9*	10.9*	10.2*	10.2*	8.6*	8.6*	6.6*	6.6*						4.5*

 Height
  Can be slewed through 360°
  In longitudinal position of undercarriage
  Max. reach
 \* Limited by hydr. capacity

The load values are quoted in tons (t) at stick end (without bucket), and may be swung 360° on firm and even ground. Adjacent values are valid for the undercarriage when in the longitudinal position. Capacities are valid for 600 mm wide track pads. Indicated loads are based on ISO 10567 standard and do not exceed 75 % of tipping or 87 % of hydraulic capacity (indicated via \*). Without bucket cylinder, link and lever the lift capacities will increase by 825 kg. Lifting capacity of the excavator is limited by machine stability and hydraulic capacity.

According to European Standard, EN 474-5: In the European Union excavators have to be equipped with an overload warning device, a load diagram and automatic safety check valves on hoist cylinders and stick cylinder(s), when they are used for lifting operations which require the use of lifting accessories.

# Lift Capacities

with Mono Boom Straight 8.00 m, Counterweight 11.0 t and Track Pads 600 mm

## Stick 2.35 m

Under-carriage	m	4.5 m		6.0 m		7.5 m		9.0 m		10.5 m		12.0 m		m	
HD	12.0														
	10.5			15.0*	15.0*								11.9*	11.9*	6.6
	9.0			14.7*	14.7*	12.8*	12.8*						10.2*	10.2*	8.2
	7.5	20.0*	20.0*	15.4*	15.4*	12.6	12.9*	9.3	11.3*				8.8	9.4*	9.3
	6.0			16.6	16.7*	12.0	13.4*	9.1	11.4*				7.6	9.0*	10.0
	4.5					11.3	13.9*	8.8	11.5*				7.0	8.8*	10.5
	3.0					10.8	14.1*	8.5	11.6*	6.8	9.6*		6.7	8.9*	10.7
	1.5					10.4	13.8*	8.2	11.3*	6.7	9.2*		6.6	8.8*	10.7
	0					10.3	12.9*	8.1	10.6*				6.8	8.2*	10.4
	-1.5			12.5*	12.5*	10.3	11.3*	8.2	9.3*				7.3	7.3*	10.0
-3.0			9.9*	9.9*	9.0*	9.0*	6.7*	6.7*				5.9*	5.9*	9.2	
-4.5															

## Stick 2.90 m

Under-carriage	m	4.5 m		6.0 m		7.5 m		9.0 m		10.5 m		12.0 m		m		
HD	12.0															
	10.5			14.0*	14.0*									11.7*	11.7*	5.2
	9.0			14.0*	14.0*	12.1*	12.1*							7.8*	7.8*	7.5
	7.5	15.3*	15.3*	14.7*	14.7*	12.4*	12.4*	9.4	10.9*					7.2*	7.2*	8.9
	6.0			16.0*	16.0*	12.2	12.9*	9.2	11.0*	7.1	8.6*			6.9*	6.9*	10.6
	4.5			15.6	17.4*	11.5	13.6*	8.8	11.3*	7.0	9.7*			6.4	6.8*	11.0
	3.0					10.9	14.0*	8.5	11.4*	6.8	9.6*			6.2	6.9*	11.2
	1.5					10.4	13.9*	8.2	11.3*	6.6	9.4*			6.1	7.1*	11.2
	0					13.9	15.4*	10.2	13.2*	8.0	10.8*	6.6	8.7*	6.2	7.5*	11.0
	-1.5			13.8*	13.8*	10.2	11.9*	8.0	9.7*	6.7	7.2*			6.6	7.0*	10.6
-3.0			11.2*	11.2*	9.8*	9.8*	7.8*	7.8*					5.9*	5.9*	9.9	
-4.5			7.8*	7.8*	6.7*	6.7*							5.1*	5.1*	8.5	

## Stick 3.80 m

Under-carriage	m	4.5 m		6.0 m		7.5 m		9.0 m		10.5 m		12.0 m		m		
HD	12.0			10.9*	10.9*								7.3*	7.3*	6.9	
	10.5					10.3*	10.3*						6.0*	6.0*	8.8	
	9.0					10.6*	10.6*	9.8	9.8*				5.4*	5.4*	10.0	
	7.5			10.6*	10.6*	11.2*	11.2*	9.7	10.2*	7.4	8.2*		5.1*	5.1*	10.9	
	6.0	18.0*	18.0*	14.7*	14.7*	12.2*	12.2*	9.4	10.5*	7.3	9.3*		4.9*	4.9*	11.5	
	4.5			16.3	16.4*	11.8	13.0*	9.0	10.9*	7.1	9.4*		4.8*	4.8*	11.9	
	3.0			15.0	17.7*	11.1	13.6*	8.6	11.2*	6.8	9.5*	5.5	6.3*	4.8*	4.8*	12.1
	1.5			14.2	17.9*	10.5	13.9*	8.2	11.3*	6.6	9.4*	5.4	6.4*	5.0*	5.0*	12.1
	0			13.8	17.0*	10.2	13.6*	8.0	11.0*	6.5	9.1*			5.2*	5.2*	11.9
	-1.5	9.9*	9.9*	13.8	15.5*	10.1	12.7*	7.9	10.3*	6.4	8.3*			5.6*	5.6*	11.5
-3.0	14.8*	14.8*	13.2*	13.2*	10.1	11.1*	7.9	9.0*	6.5	6.7*			5.7*	5.7*	10.9	
-4.5	10.9*	10.9*	10.2*	10.2*	8.6*	8.6*	6.6*	6.6*					4.5*	4.5*	9.9	

Height Can be slewed through 360° In longitudinal position of undercarriage Max. reach \* Limited by hydr. capacity

The load values are quoted in tons (t) at stick end (without bucket), and may be swung 360° on firm and even ground. Adjacent values are valid for the undercarriage when in the longitudinal position. Capacities are valid for 600 mm wide track pads. Indicated loads are based on ISO 10567 standard and do not exceed 75 % of tipping or 87 % of hydraulic capacity (indicated via \*). Without bucket cylinder, link and lever the lift capacities will increase by 825 kg. Lifting capacity of the excavator is limited by machine stability and hydraulic capacity.

According to European Standard, EN 474-5: In the European Union excavators have to be equipped with an overload warning device, a load diagram and automatic safety check valves on hoist cylinders and stick cylinder(s), when they are used for lifting operations which require the use of lifting accessories.

# Lift Capacities

with Two-Piece Boom 7.90 m (Main Boom 4.70 m), Counterweight 9.0 t and Track Pads 600 mm

### Stick 2.35 m

Under-carriage	m	3.0 m		4.5 m		6.0 m		7.5 m		9.0 m		10.5 m		m		
		Height	Can be slewed through 360°	Height	Can be slewed through 360°	Height	Can be slewed through 360°	Height	Can be slewed through 360°	Height	Can be slewed through 360°	Height	Can be slewed through 360°			
LC	12.0												18.0*	18.0*	3.4	
	10.5												12.0*	12.0*	6.4	
	9.0												9.2	10.2*	8.1	
	7.5	29.4*	29.4*	18.6*	18.6*	15.5*	15.5*	11.0	12.8*				7.1	9.4*	9.2	
	6.0			20.5*	20.5*	15.4	15.6*	11.1	12.8*	7.5	10.9*		6.0	9.0*	9.9	
	4.5			19.6*	19.6*	14.2	17.0*	10.7	13.2*	7.7	10.9*		5.4	8.9	10.4	
	3.0			20.7	20.8*	14.1	16.8*	10.7	13.1*	7.5	10.7*		5.1	8.4*	10.6	
	1.5			20.6	23.1*	14.0	16.8*	10.1	13.1*	7.1	10.7*	5.2	8.6	5.1	8.6*	10.6
	0			19.5	24.2*	13.0	17.1*	9.6	13.3*	6.7	10.9*			5.1	6.8*	10.4
	-1.5	31.0*	31.0*	19.1	24.7*	12.5	17.7*	9.0	13.8*	6.5	9.9*			5.6	5.6*	9.9
	-3.0	37.6*	37.6*	19.2	24.5*	12.5	17.7*	8.6	12.2*	5.2*	5.2*			3.9*	3.9*	9.1
	-4.5	33.3*	33.3*	19.7	21.1*	12.3	13.1*	5.6*	5.6*					5.2*	5.2*	7.6
	-6.0															
LC-V	12.0												16.9*	16.9*	3.4	
	10.5			18.5*	18.5*	15.4*	15.4*						11.8*	11.8*	6.4	
	9.0			17.8*	17.8*	15.2*	15.2*	12.0	12.8*				9.8	10.1*	8.1	
	7.5			20.7*	20.7*	15.7*	15.7*	11.8	12.8*	8.3	10.9*		7.8	9.4*	9.2	
	6.0			20.1*	20.1*	15.5	16.5*	11.5	13.1*	8.6	10.9*		6.6	9.0*	9.9	
	4.5			19.6*	19.6*	15.0	17.0*	11.3	13.3*	8.5	10.9*		6.0	8.9*	10.4	
	3.0			21.0*	21.0*	14.8	16.8*	11.3	13.1*	8.3	10.7*		5.8	8.7*	10.6	
	1.5			22.2	23.3*	15.0	16.8*	11.1	13.1*	7.9	10.8*	5.7	8.0*	5.6	7.6*	10.6
	0	17.4*	17.4*	21.5	24.2*	14.3	17.1*	10.5	13.3*	7.5	10.9*			5.8	6.7*	10.4
	-1.5	32.1*	32.1*	21.1	24.7*	13.8	17.7*	9.9	13.8*	7.2	9.7*			5.5*	5.5*	9.9
	-3.0	37.4*	37.4*	21.2	24.4*	13.8	17.6*	9.6	11.9*	4.4*	4.4*			3.8*	3.8*	9.1
	-4.5	32.6*	32.6*	20.3*	20.3*	12.4*	12.4*							5.4*	5.4*	7.6
	-6.0															
HD	12.0												17.8*	17.8*	3.4	
	10.5			18.6*	18.6*	15.5*	15.5*						11.9*	11.9*	6.4	
	9.0			17.7*	17.7*	15.2*	15.2*	11.5	12.8*				9.6	10.2*	8.1	
	7.5	29.2*	29.2*	20.5*	20.5*	15.6*	15.6*	11.5	12.8*	7.9	10.9*		7.5	9.4*	9.2	
	6.0			20.2*	20.2*	15.1*	16.4*	11.2	13.0*	8.2	10.9*		6.3	9.0*	9.9	
	4.5			19.6*	19.6*	14.6	17.0*	11.0	13.2*	8.1	10.9*		5.7	8.9*	10.4	
	3.0			20.9*	20.9*	14.4	16.8*	11.0	13.1*	7.9	10.7*		5.4	8.4*	10.6	
	1.5			21.6	23.1*	14.6	16.8*	10.6	13.1*	7.5	10.8*	5.5	8.7*	5.3	7.7*	10.6
	0			20.5	24.2*	13.7	17.1*	10.0	13.3*	7.1	10.9*			5.4	6.8*	10.4
	-1.5	31.2*	31.2*	20.1	24.7*	13.2	17.7*	9.5	13.8*	6.8	9.9*			5.6*	5.6*	9.9
	-3.0	37.6*	37.6*	20.2	24.5*	13.1	17.7*	9.1	12.1*	5.1*	5.1*			3.8*	3.8*	9.1
	-4.5	33.2*	33.2*	20.7	20.9*	12.9	12.9*	5.4*	5.4*					5.2*	5.2*	7.6
	-6.0															

### Stick 2.90 m

Under-carriage	m	3.0 m		4.5 m		6.0 m		7.5 m		9.0 m		10.5 m		m		
		Height	Can be slewed through 360°	Height	Can be slewed through 360°	Height	Can be slewed through 360°	Height	Can be slewed through 360°	Height	Can be slewed through 360°	Height	Can be slewed through 360°			
LC	12.0												14.3*	14.3*	4.9	
	10.5			14.6*	14.6*								14.4*	14.4*	7.3	
	9.0												14.4*	14.4*	8.8	
	7.5			15.8*	15.8*	15.0*	15.0*	11.2	12.4*				11.3	12.3*	9.8	
	6.0			21.6*	21.6*	14.8	15.9*	10.9	12.7*	8.0	10.6*		8.2	10.7*	10.5	
	4.5			20.2*	20.2*	14.2	16.7*	10.6	13.0*	8.1	10.7*				10.9	
	3.0			20.6	20.7*	14.0	16.7*	10.5	13.1*	7.8	10.6*	5.5	8.9	4.9	6.9*	11.1
	1.5			20.7	22.5*	14.0	16.7*	10.3	12.9*	7.4	10.6*	5.2	8.6	4.5	7.2*	11.1
	0	18.0*	18.0*	19.9	23.8*	13.2	16.8*	9.6	13.0*	6.9	10.8*	5.0	8.2*	4.7	6.5*	10.9
	-1.5	27.3*	27.3*	19.1	24.3*	12.6	17.3*	9.2	13.6*	6.5	10.6*			5.0	5.5*	10.5
	-3.0	38.1*	38.1*	19.0	24.6*	12.4	17.8*	8.7	13.2*	6.4	8.4*			4.0*	4.0*	9.8
	-4.5	35.7*	35.7*	19.5	23.2*	12.2	15.5*	8.5	9.3*					4.2*	4.2*	8.5
	-6.0	23.1*	23.1*	13.3*	13.3*									8.1*	8.1*	5.6
LC-V	12.0												15.2*	15.2*	4.9	
	10.5												14.4*	14.4*	7.3	
	9.0												14.4*	14.4*	8.8	
	7.5			16.4*	16.4*	15.1*	15.1*	11.9	12.4*	8.8	10.6*			7.0	7.2*	9.8
	6.0			21.3*	21.3*	15.7	16.0*	11.5	12.8*	8.9	10.7*	6.1	7.5*	5.5	6.9*	10.5
	4.5			20.2*	20.2*	15.0	16.8*	11.2	13.1*	8.8	10.7*	6.1	9.0*	5.5	6.9*	10.9
	3.0			20.8*	20.8*	14.7	16.7*	11.1	13.1*	8.6	10.6*	6.0	8.9*	5.2	7.0*	11.1
	1.5			21.9	22.6*	14.8	16.7*	11.2	12.9*	8.2	10.6*	5.8	8.8*	5.2	7.2*	11.1
	0	18.7*	18.7*	21.8	23.8*	14.5	16.9*	10.6	13.1*	7.7	10.8*	5.6	8.1*	5.3	6.4*	10.9
	-1.5	28.1*	28.1*	21.1	24.4*	13.9	17.3*	10.2	13.7*	7.3	10.6*			5.4*	5.4*	10.5
	-3.0	38.6*	38.6*	21.0	24.6*	13.7	17.8*	9.6	13.0*	7.1	8.1*			3.9*	3.9*	9.8
	-4.5	35.2*	35.2*	21.5	22.9*	13.5	15.0*	8.7*	8.7*					4.4*	4.4*	8.5
	-6.0	21.1*	21.1*	12.0*	12.0*									9.3*	9.3*	5.6
HD	12.0												14.7*	14.7*	4.9	
	10.5												14.4*	14.4*	7.3	
	9.0												14.4*	14.4*	8.8	
	7.5			15.9*	15.9*	15.1*	15.1*	11.5	12.4*				11.7	12.3*	9.8	
	6.0			21.5*	21.5*	15.3	15.9*	11.2	12.7*	8.5	10.7*	8.4	10.6*	6.7	7.2*	10.5
	4.5			20.2*	20.2*	14.6	16.7*	10.9	13.1*	8.5	10.7*	5.8	9.0*	5.2	6.9*	10.9
	3.0			20.7*	20.7*	14.4	16.7*	10.8	13.1*	8.2	10.6*	5.7	8.9*	4.9	7.0*	11.1
	1.5			21.3	22.5*	14.4	16.7*	10.8	12.9*	7.8	10.6*	5.5	8.8*	4.8	7.2*	11.1
	0	18.1*	18.1*	20.9	23.8*	13.9	16.8*	10.1	13.0*	7.3	10.8*	5.3	8.2*	5.0	6.4*	10.9
	-1.5	27.4*	27.4*	20.2	24.3*	13.2	17.3*	9.7	13.6*	6.9	10.6*			5.3	5.4*	10.5
	-3.0	38.3*	38.3*	20.0	24.6*	13.0	17.8*	9.2	13.2*	6.7	8.4*			4.0*	4.0*	9.8
	-4.5	35.6*	35.6*	20.5	23.1*	12.8	15.4*	9.0	9.2*					4.3*	4.3*	8.5
	-6.0	22.8*	22.8*	13.1*	13.1*									8.2*	8.2*	5.6

↑ Height   ↓ Can be slewed through 360°   In longitudinal position of undercarriage   Max. reach \* Limited by hydr. capacity

The load values are quoted in tons (t) at stick end (without bucket), and may be swung 360° on firm and even ground. Adjacent values are valid for the undercarriage when in the longitudinal position. Capacities are valid for 600 mm wide track pads with adjusting cylinder in optimal position. Indicated loads are based on ISO 10567 standard and do not exceed 75% of tipping or 87% of hydraulic capacity (indicated via \*). Without bucket cylinder, link and lever the lift capacities will increase by 825 kg. Lifting capacity of the excavator is limited by machine stability and hydraulic capacity.

According to European Standard, EN 474-5: In the European Union excavators have to be equipped with an overload warning device, a load diagram and automatic safety check valves on hoist cylinders and stick cylinder(s), when they are used for lifting operations which require the use of lifting accessories.



## Stick 3.80 m

Under-carriage	3.0 m		4.5 m		6.0 m		7.5 m		9.0 m		10.5 m		12.0 m		m		
	↕	↔	↕	↔	↕	↔	↕	↔	↕	↔	↕	↔	↕	↔	↕	↔	
LC	12.0				10.5*	10.5*							7.4*	7.4*	6.7	6.7	
	10.5				10.7*	10.7*							6.1*	6.1*	8.6	8.6	
	9.0				10.3*	10.3*			8.3	9.6*			5.4*	5.4*	9.9	9.9	
	7.5				11.1*	11.1*			8.6	10.1*	5.9	7.5*	5.1*	5.1*	10.8	10.8	
	6.0			16.9*	16.9*	14.6*	14.6*	11.0	12.2*	8.4	10.3*	6.0	8.9*	4.7	4.9*	11.4	11.4
	4.5			21.4	21.5*	14.4	16.1*	10.6	12.7*	8.3	10.5*	6.0	8.9*	4.3	4.8*	11.8	11.8
	3.0	19.3*	19.3*	20.6*	20.7*	14.0	16.8*	10.4	13.0*	8.2	10.6*	5.8	8.8	4.1	4.9*	12.0	12.0
	1.5	15.6*	15.6*	20.5	21.7*	13.8	16.6*	10.4	12.9*	7.9	10.4*	5.6	8.7	4.0	5.0*	12.0	12.0
	0	18.2*	18.2*	20.7	23.1*	13.7	16.6*	9.9	12.8*	7.4	10.4*	5.3	8.6	4.0	5.3*	11.8	11.8
	-1.5	23.6*	23.6*	19.5	23.8*	12.8	16.8*	9.3	13.0*	6.9	10.8*	5.0	8.3*	4.3	5.2*	11.4	11.4
-3.0	30.6*	30.6*	19.0	24.4*	12.3	17.5*	9.0	13.7*	6.5	10.3*	4.9	5.8*	4.1*	4.1*	10.8	10.8	
-4.5	38.2*	38.2*	19.0	24.3*	12.3	17.5*	8.5	12.4*	6.3	7.4*			3.2*	3.2*	9.8	9.8	
-6.0	33.3*	33.3*	19.5	20.5*	12.1	12.9*	6.6*	6.6*					4.7*	4.7*	7.9	7.9	
LC-V	12.0				10.7*	10.7*							7.2*	7.2*	6.7	6.7	
	10.5				10.7*	10.7*							6.0*	6.0*	8.6	8.6	
	9.0				10.3*	10.3*			9.1	9.7*			5.4*	5.4*	9.9	9.9	
	7.5				11.3*	11.3*			11.4*	11.4*	6.5	7.8*	5.1*	5.1*	10.8	10.8	
	6.0			19.4*	19.4*	15.2*	15.2*	11.7	12.2*	9.0	10.3*	6.7	8.9*	4.9*	4.9*	11.4	11.4
	4.5	18.0*	18.0*	21.5*	21.5*	15.2	16.2*	11.3	12.7*	8.8	10.5*	6.6	8.9*	4.8	4.8*	11.8	11.8
	3.0	19.9*	19.9*	20.7*	20.7*	14.8	16.8*	11.0	13.0*	8.7	10.6*	6.4	8.8*	4.6	4.9*	12.0	12.0
	1.5	15.6*	15.6*	21.6	21.8*	14.6	16.6*	11.0	12.9*	8.7	10.4*	6.2	8.7*	4.5	5.0*	12.0	12.0
	0	18.6*	18.6*	21.9	23.2*	14.8	16.6*	10.8	12.8*	8.1	10.4*	5.9	8.8*	4.6	5.3*	11.8	11.8
	-1.5	24.1*	24.1*	21.4	23.8*	14.1	16.9*	10.3	13.1*	7.6	10.8*	5.6	8.2*	4.9	5.1*	11.4	11.4
-3.0	31.2*	31.2*	20.9	24.5*	13.6	17.5*	9.9	13.7*	7.2	10.2*	5.3*	5.3*	4.0*	4.0*	10.8	10.8	
-4.5	38.0*	38.0*	21.0	24.2*	13.6	17.4*	9.5	12.1*	6.9*	6.9*			3.3*	3.3*	9.8	9.8	
-6.0	32.5*	32.5*	19.7*	19.7*	12.2*	12.2*	5.7*	5.7*					4.9*	4.9*	7.9	7.9	
HD	12.0				10.5*	10.5*							7.3*	7.3*	6.7	6.7	
	10.5				10.7*	10.7*							6.0*	6.0*	8.6	8.6	
	9.0				10.3*	10.3*			8.7	9.6*			5.4*	5.4*	9.9	9.9	
	7.5				11.2*	11.2*			8.8	10.1*	6.2	7.6*	5.1*	5.1*	10.8	10.8	
	6.0			17.2*	17.2*	14.7*	14.7*	11.3	12.2*	8.7	10.3*	6.3	8.9*	4.9*	4.9*	11.4	11.4
	4.5	18.5*	18.5*	21.5*	21.5*	14.9	16.2*	11.0	12.7*	8.6	10.5*	6.3	8.9*	4.6	4.8*	11.8	11.8
	3.0	19.4*	19.4*	20.7*	20.7*	14.4	16.8*	10.7	13.0*	8.5	10.6*	6.1	8.8*	4.3	4.9*	12.0	12.0
	1.5	15.6*	15.6*	21.1*	21.7*	14.2	16.6*	10.7	12.9*	8.3	10.4*	5.9	8.7*	4.2	5.0*	12.0	12.0
	0	18.3*	18.3*	21.3	23.2*	14.4	16.6*	10.4	12.8*	7.8	10.4*	5.6	8.8*	4.3	5.3*	11.8	11.8
	-1.5	23.7*	23.7*	20.5	23.8*	13.5	16.9*	9.8	13.0*	7.3	10.8*	5.3	8.3*	4.6	5.2*	11.4	11.4
-3.0	30.7*	30.7*	20.0	24.5*	13.0	17.5*	9.5	13.7*	6.8	10.3*	5.2	5.7*	4.1*	4.1*	10.8	10.8	
-4.5	38.2*	38.2*	20.0	24.3*	13.0	17.5*	9.0	12.3*	6.7	7.3*			3.3*	3.3*	9.8	9.8	
-6.0	33.2*	33.2*	20.3*	20.3*	12.8*	12.8*	6.4*	6.4*					4.8*	4.8*	7.9	7.9	

 Height
  Can be slewed through 360°
  In longitudinal position of undercarriage
  Max. reach
 \* Limited by hydr. capacity

The load values are quoted in tons (t) at stick end (without bucket), and may be swung 360° on firm and even ground. Adjacent values are valid for the undercarriage when in the longitudinal position. Capacities are valid for 600 mm wide track pads with adjusting cylinder in optimal position. Indicated loads are based on ISO 10567 standard and do not exceed 75% of tipping or 87% of hydraulic capacity (indicated via \*). Without bucket cylinder, link and lever the lift capacities will increase by 825 kg. Lifting capacity of the excavator is limited by machine stability and hydraulic capacity.

According to European Standard, EN 474-5: In the European Union excavators have to be equipped with an overload warning device, a load diagram and automatic safety check valves on hoist cylinders and stick cylinder(s), when they are used for lifting operations which require the use of lifting accessories.

# Lift Capacities

with Two-Piece Boom 7.90 m (Main Boom 4.70 m), Counterweight 11.0 t and Track Pads 600 mm

### Stick 2.35 m

Under-carriage	m	3.0 m		4.5 m		6.0 m		7.5 m		9.0 m		10.5 m		m	
		↕	↔	↕	↔	↕	↔	↕	↔	↕	↔	↕	↔		
LC	12.0												18.0*	18.0*	3.4
	10.5												12.0*	12.0*	6.4
	9.0												10.2*	10.2*	8.1
	7.5	29.4*	29.4*	18.6*	18.6*	15.5*	15.5*	12.2	12.8*				8.1	9.4*	9.2
	6.0			20.3*	20.3*	15.6*	15.6*	12.0	12.8*	8.5	10.9*		6.9	9.0*	9.9
	4.5			19.6*	19.6*	15.2	17.0*	11.5	13.2*	8.7	10.9*		6.2	8.9*	10.4
	3.0			20.8*	20.8*	15.0	16.8*	11.4*	13.1*	8.5	10.7*	6.0	5.9	8.4*	10.6
	1.5			22.5	23.1*	15.2	16.8*	11.4	13.1*	8.1	10.7*	5.9	5.8	7.7*	10.6
	0			22.0	24.2*	14.7	17.1*	10.8	13.3*	7.7	10.9*		6.0	6.8*	10.4
	-1.5	31.0*	31.0*	21.6	24.7*	14.2	17.7*	10.3	13.8*	7.5	9.9*		5.6*	5.6*	9.9
	-3.0	37.6*	37.6*	21.7	24.5*	14.2	17.7*	9.9	12.2*	5.2*	5.2*		3.9*	3.9*	9.1
	-4.5	33.3*	33.3*	21.1*	21.1*	13.1*	13.1*	5.6*	5.6*				5.2*	5.2*	7.6
	-6.0														
LC-V	12.0												16.9*	16.9*	3.4
	10.5			18.5*	18.5*	15.4*	15.4*						11.8*	11.8*	6.4
	9.0			17.8*	17.8*	15.2*	15.2*	12.8*	12.8*				10.1*	10.1*	8.1
	7.5			20.7*	20.7*	15.7*	15.7*	12.7	12.8*	9.3	10.9*		8.7	9.4*	9.2
	6.0			20.1*	20.1*	16.5*	16.5*	12.4	13.1*	9.6	10.9*		7.5	9.0*	9.9
	4.5			19.6*	19.6*	16.0	17.0*	12.1	13.3*	9.5	10.9*		6.9	8.9*	10.4
	3.0			21.0*	21.0*	15.8	16.8*	12.0	13.1*	9.3	10.7*	6.6	6.5	8.4*	10.6
	1.5			23.3*	23.3*	15.9	16.8*	12.1	13.1*	8.9	10.8*	6.5	6.5	7.6*	10.6
	0	17.4*	17.4*	23.9	24.2*	16.0	17.1*	11.8	13.3*	8.5	10.9*		6.7	6.7*	10.4
	-1.5	32.1*	32.1*	23.6	24.7*	15.5	17.7*	11.2	13.8*	8.2	9.7*		5.5*	5.5*	9.9
	-3.0	37.4*	37.4*	23.7	24.4*	15.4	17.6*	10.8	11.9*	4.4*	4.4*		3.8*	3.8*	9.1
	-4.5	32.6*	32.6*	20.3*	20.3*	12.4*	12.4*						5.4*	5.4*	7.6
	-6.0														
HD	12.0												17.8*	17.8*	3.4
	10.5			18.6*	18.6*	15.5*	15.5*						11.9*	11.9*	6.4
	9.0			17.7*	17.7*	15.2*	15.2*	12.5	12.8*				10.2*	10.2*	8.1
	7.5	29.2*	29.2*	20.5*	20.5*	15.6*	15.6*	12.4	12.8*	8.9	10.9*		8.5	9.4*	9.2
	6.0			20.2*	20.2*	16.2	16.4*	12.1	13.0*	9.2	10.9*		7.2	9.0*	9.9
	4.5			19.6*	19.6*	15.6	17.0*	11.8	13.2*	9.1	10.9*		6.6	8.9*	10.4
	3.0			20.9*	20.9*	15.4	16.8*	11.7	13.1*	8.9	10.7*	6.3	6.2	8.4*	10.6
	1.5			23.0	23.1*	15.5	16.8*	11.9	13.1*	8.5	10.8*	6.2	6.1	7.7*	10.6
	0			23.1	24.2*	15.4	17.1*	11.3	13.3*	8.1	10.9*		6.3	6.8*	10.4
	-1.5	31.2*	31.2*	22.6	24.7*	14.9	17.7*	10.7	13.8*	7.8	9.9*		5.6*	5.6*	9.9
	-3.0	37.6*	37.6*	22.7	24.5*	14.8	17.7*	10.3	12.1*	5.1*	5.1*		3.8*	3.8*	9.1
	-4.5	33.2*	33.2*	20.9*	20.9*	12.9*	12.9*	5.4*	5.4*				5.2*	5.2*	7.6
	-6.0														

### Stick 2.90 m

Under-carriage	m	3.0 m		4.5 m		6.0 m		7.5 m		9.0 m		10.5 m		m		
		↕	↔	↕	↔	↕	↔	↕	↔	↕	↔	↕	↔			
LC	12.0												18.0*	18.0*	3.4	
	10.5												12.0*	12.0*	6.4	
	9.0												10.2*	10.2*	8.1	
	7.5												14.3*	14.3*	9.2	
	6.0			14.6*	14.6*								14.4*	14.4*	9.9	
	4.5			15.8*	15.8*	15.0*	15.0*	12.1	12.4*	9.0	10.6*		11.7	12.7*	10.4	
	3.0			21.6*	21.6*	15.9*	15.9*	11.4	13.0*	9.1	10.7*		11.3	12.9*	10.9	
	1.5			20.2*	20.2*	15.3	16.7*	11.4	13.0*	9.1	10.7*	6.3	9.0*	9.0*	10.9	
	0			22.5	22.5*	15.0	16.7*	11.3	12.9*	8.4	10.6*	6.2	8.9*	5.4	6.9*	11.1
	-1.5	18.0*	18.0*	22.4	23.8*	14.9	16.8*	10.9	13.0*	7.9	10.8*	5.8	8.2*	5.5	6.5*	10.9
	-3.0	27.3*	27.3*	21.7	24.3*	14.3	17.3*	10.5	13.6*	7.5	10.6*			4.0*	4.0*	9.8
	-4.5	35.7*	35.7*	22.0	23.2*	13.9	15.5*	9.3*	9.3*					4.2*	4.2*	8.5
	-6.0	23.1*	23.1*	13.3*	13.3*									8.1*	8.1*	5.6
LC-V	12.0												16.9*	16.9*	3.4	
	10.5			18.5*	18.5*	15.4*	15.4*						11.8*	11.8*	6.4	
	9.0			17.8*	17.8*	15.2*	15.2*	12.8*	12.8*				10.1*	10.1*	8.1	
	7.5			20.7*	20.7*	15.7*	15.7*	12.7	12.8*	9.3	10.9*		8.7	9.4*	9.2	
	6.0			20.1*	20.1*	16.5*	16.5*	12.4	13.1*	9.6	10.9*		7.5	9.0*	9.9	
	4.5			19.6*	19.6*	16.0	17.0*	12.1	13.3*	9.5	10.9*		6.9	8.9*	10.4	
	3.0			21.0*	21.0*	15.8	16.8*	12.0	13.1*	9.3	10.7*	6.6	6.5	8.4*	10.6	
	1.5			23.3*	23.3*	15.9	16.8*	12.1	13.1*	8.9	10.8*	6.5	6.5	7.6*	10.6	
	0	17.4*	17.4*	23.9	24.2*	16.0	17.1*	11.8	13.3*	8.5	10.9*		6.7	6.7*	10.4	
	-1.5	32.1*	32.1*	23.6	24.7*	15.5	17.7*	11.2	13.8*	8.2	9.7*		5.5*	5.5*	9.9	
	-3.0	37.4*	37.4*	23.7	24.4*	15.4	17.6*	10.8	11.9*	4.4*	4.4*		3.8*	3.8*	9.1	
	-4.5	32.6*	32.6*	20.3*	20.3*	12.4*	12.4*						5.4*	5.4*	7.6	
	-6.0															
HD	12.0												17.8*	17.8*	3.4	
	10.5			18.5*	18.5*	15.4*	15.4*						11.9*	11.9*	6.4	
	9.0			17.8*	17.8*	15.2*	15.2*	12.8*	12.8*				10.1*	10.1*	8.1	
	7.5			20.7*	20.7*	15.7*	15.7*	12.7	12.8*	9.3	10.9*		8.7	9.4*	9.2	
	6.0			20.1*	20.1*	16.5*	16.5*	12.4	13.1*	9.6	10.9*		7.5	9.0*	9.9	
	4.5			19.6*	19.6*	16.0	17.0*	12.1	13.3*	9.5	10.9*		6.9	8.9*	10.4	
	3.0			21.0*	21.0*	15.8	16.8*	12.0	13.1*	9.3	10.7*	6.6	6.5	8.4*	10.6	
	1.5			23.3*	23.3*	15.9	16.8*	12.1	13.1*	8.9	10.8*	6.5	6.5	7.6*	10.6	
	0	18.1*	18.1*	23.6	23.8*	16.0	16.9*	11.8	13.7*	8.3	10.6*		6.7	6.7*	10.4	
	-1.5	27.4*	27.4*	23.2	24.6*	15.4	17.8*	10.9	13.0*	8.1*	8.1*		5.5*	5.5*	9.9	
	-3.0	35.6*	35.6*	23.0	23.1*	14.5	15.4*	9.2*	9.2*				3.8*	3.8*	9.1	
	-4.5	22.8*	22.8*	13.1*	13.1*								5.2*	5.2*	7.6	
	-6.0															

↕ Height   ↔ Can be slewed through 360°   In longitudinal position of undercarriage   Max. reach \* Limited by hydr. capacity

The load values are quoted in tons (t) at stick end (without bucket), and may be swung 360° on firm and even ground. Adjacent values are valid for the undercarriage when in the longitudinal position. Capacities are valid for 600 mm wide track pads with adjusting cylinder in optimal position. Indicated loads are based on ISO 10567 standard and do not exceed 75% of tipping or 87% of hydraulic capacity (indicated via \*). Without bucket cylinder, link and lever the lift capacities will increase by 825 kg. Lifting capacity of the excavator is limited by machine stability and hydraulic capacity.

According to European Standard, EN 474-5: In the European Union excavators have to be equipped with an overload warning device, a load diagram and automatic safety check valves on hoist cylinders and stick cylinder(s), when they are used for lifting operations which require the use of lifting accessories.

## Stick 3.80 m

Under-carriage	3.0 m		4.5 m		6.0 m		7.5 m		9.0 m		10.5 m		12.0 m		m			
	↕	↔	↔	↔	↔	↔	↔	↔	↔	↔	↔	↔	↔	↔	↔	↔		
LC	12.0				10.5*	10.5*									7.4*	7.4*	6.7	
	10.5				10.7*	10.7*									6.1*	6.1*	8.6	
	9.0				10.3*	10.3*									5.4*	5.4*	9.9	
	7.5				11.1*	11.1*									5.1*	5.1*	10.8	
	6.0			16.9*	16.9*	14.6*	14.6*	11.9	12.2*	9.1	10.3*	6.8	8.9*		4.9*	4.9*	11.4	
	4.5			21.5*	21.5*	15.5	16.1*	11.5	12.7*	9.0	10.5*	6.8	8.9*		4.8*	4.8*	11.8	
	3.0	19.3*	19.3*	20.7*	20.7*	15.0	16.8*	11.2	13.0*	8.9	10.6*	6.6	8.8*	4.8	4.9*	4.8	4.9*	12.0
	1.5	15.6*	15.6*	21.7*	21.7*	14.8*	16.6*	11.1	12.9*	8.9	10.4*	6.4	8.7*	4.8	4.9*	4.7	5.0*	12.0
	0	18.2*	18.2*	22.1	23.1*	15.0	16.6*	11.2	12.8*	8.4	10.4*	6.1	8.8*	4.8	4.9*	4.8	5.3*	11.8
	-1.5	23.6*	23.6*	22.0	23.8*	14.5	16.8*	10.6	13.0*	7.9	10.8*	5.8	8.3*	5.1	5.2*	5.1	5.2*	11.4
-3.0	30.6*	30.6*	21.5	24.4*	14.0	17.5*	10.2	13.7*	7.5	10.3*	5.8	8.3*	4.1*	4.1*	4.1*	4.1*	10.8	
-4.5	38.2*	38.2*	21.5	24.3*	14.0	17.5*	9.8	12.4*	7.3	7.4*			3.2*	3.2*	3.2*	3.2*	9.8	
-6.0	33.3*	33.3*	20.5*	20.5*	12.9*	12.9*	6.6*	6.6*					4.7*	4.7*	4.7*	4.7*	7.9	
LC-V	12.0				10.7*	10.7*									7.2*	7.2*	6.7	
	10.5				10.7*	10.7*									6.0*	6.0*	8.6	
	9.0				10.3*	10.3*			9.7*	9.7*					5.4*	5.4*	9.9	
	7.5				11.3*	11.3*			9.9	10.1*	7.3	7.8*			5.1*	5.1*	10.8	
	6.0			19.4*	19.4*	15.2*	15.2*	12.2*	12.2*	9.7	10.3*	7.5	8.9*		4.9*	4.9*	11.4	
	4.5	18.0*	18.0*	21.5*	21.5*	16.2*	16.2*	12.1	12.7*	9.5	10.5*	7.4	8.9*		4.8*	4.8*	11.8	
	3.0	19.9*	19.9*	20.7*	20.7*	15.7	16.8*	11.8	13.0*	9.3	10.6*	7.2	8.8*	5.0*	5.0*	4.9*	4.9*	12.0
	1.5	15.6*	15.6*	21.8*	21.8*	15.6	16.6*	11.7	12.9*	9.4	10.4*	7.0	8.7*		5.0*	5.0*	12.0	
	0	18.6*	18.6*	23.1	23.2*	15.7	16.6*	11.8	12.8*	9.1	10.4*	6.7	8.8*		5.3*	5.3*	11.8	
	-1.5	24.1*	24.1*	23.6	23.8*	15.8	16.9*	11.5	13.1*	8.6	10.8*	6.5	8.2*		5.1*	5.1*	11.4	
-3.0	31.2*	31.2*	23.5	24.5*	15.3	17.5*	11.2	13.7*	8.2	10.2*	5.3*	5.3*		4.0*	4.0*	10.8		
-4.5	38.0*	38.0*	23.6	24.2*	15.3	17.4*	10.8	12.1*	6.9*	6.9*				3.3*	3.3*	9.8		
-6.0	32.5*	32.5*	19.7*	19.7*	12.2*	12.2*	5.7*	5.7*						4.9*	4.9*	7.9		
HD	12.0				10.5*	10.5*									7.3*	7.3*	6.7	
	10.5				10.7*	10.7*									6.0*	6.0*	8.6	
	9.0				10.3*	10.3*			9.5	9.6*					5.4*	5.4*	9.9	
	7.5				11.2*	11.2*			9.6	10.1*	7.0	7.6*			5.1*	5.1*	10.8	
	6.0			17.2*	17.2*	14.7*	14.7*	12.2*	12.2*	9.4	10.3*	7.1	8.9*		4.9*	4.9*	11.4	
	4.5	18.5*	18.5*	21.5*	21.5*	16.0	16.2*	11.8	12.7*	9.2	10.5*	7.1	8.9*		4.8*	4.8*	11.8	
	3.0	19.4*	19.4*	20.7*	20.7*	15.4	16.8*	11.5	13.0*	9.1	10.6*	6.9	8.8*	4.9*	4.9*	4.9*	4.9*	12.0
	1.5	15.6*	15.6*	21.7*	21.7*	15.2	16.6*	11.4	12.9*	9.2	10.4*	6.7	8.7*		5.0	5.0*	12.0	
	0	18.3*	18.3*	22.6	23.2*	15.3	16.6*	11.6	12.8*	8.8	10.4*	6.4	8.8*		5.1	5.3*	11.8	
	-1.5	23.7*	23.7*	23.1	23.8*	15.1	16.9*	11.1	13.0*	8.2	10.8*	6.1	8.3*		5.2*	5.2*	11.4	
-3.0	30.7*	30.7*	22.5	24.5*	14.7	17.5*	10.7	13.7*	7.8	10.3*	5.7*	5.7*		4.1*	4.1*	10.8		
-4.5	38.2*	38.2*	22.5	24.3*	14.6	17.5*	10.3	12.3*	7.3*	7.3*				3.3*	3.3*	9.8		
-6.0	33.2*	33.2*	20.3*	20.3*	12.8*	12.8*	6.4*	6.4*						4.8*	4.8*	7.9		

 Height
  Can be slewed through 360°
  In longitudinal position of undercarriage
  Max. reach
 \* Limited by hydr. capacity

The load values are quoted in tons (t) at stick end (without bucket), and may be swung 360° on firm and even ground. Adjacent values are valid for the undercarriage when in the longitudinal position. Capacities are valid for 600 mm wide track pads with adjusting cylinder in optimal position. Indicated loads are based on ISO 10567 standard and do not exceed 75% of tipping or 87% of hydraulic capacity (indicated via \*). Without bucket cylinder, link and lever the lift capacities will increase by 825 kg. Lifting capacity of the excavator is limited by machine stability and hydraulic capacity.

According to European Standard, EN 474-5: In the European Union excavators have to be equipped with an overload warning device, a load diagram and automatic safety check valves on hoist cylinders and stick cylinder(s), when they are used for lifting operations which require the use of lifting accessories.

# Lift Capacities

with Mono Boom 9.20 m, Counterweight 11.0 t and Track Pads 600 mm

## Stick 2.90 m

Under-carriage	m	3.0 m		4.5 m		6.0 m		7.5 m		9.0 m		10.5 m		12.0 m		13.5 m		m		
LC	12.0									7.6*	7.6*							7.6*	7.6*	9.1
	10.5									7.3*	7.3*							7.2	7.3*	10.3
	9.0									7.7*	7.7*							6.1	7.0*	11.2
	7.5							8.6*	8.6*	8.2*	8.2*	6.9	7.2*					5.5	6.8*	11.8
	6.0							9.7*	9.7*	8.1	8.9*	6.4	7.4*					5.0	6.8*	12.2
	4.5							10.3	11.0*	7.6	9.6*	6.1	8.2*	5.2	7.2*			4.8	7.0*	12.4
	3.0							9.5	12.1*	7.3	10.2*	5.9	8.6*	4.9	7.6*			4.7	7.2*	12.3
	1.5							8.9	12.9*	7.0	10.4*	5.8	8.8*	4.8	7.6*			4.8	7.5*	12.2
	0							8.9	12.7*	7.0	10.5*	5.7	8.8*					5.0	7.6*	11.8
	-1.5					9.7*	9.7*	12.7	14.7*	9.0	12.3*	7.0	10.2*	5.8	8.5*			5.4	7.7*	11.1
	-3.0					15.7*	15.7*	13.0	13.6*	9.3	11.4*	7.2	9.4*					6.2	7.7*	10.3
	-4.5					13.8*	13.8*	11.8*	11.8*	9.7	9.9*	7.6*	7.6*					7.5*	7.5*	9.0
	-6.0							8.7*	8.7*									6.7*	6.7*	7.3
	-7.5																			
	-9.0																			
LC-V	12.0									7.5*	7.5*							7.6*	7.6*	9.1
	10.5									7.4*	7.4*							7.3*	7.3*	10.3
	9.0									8.7*	8.7*	7.7*	7.7*	7.2*	7.2*			6.7	7.0*	11.2
	7.5							9.8*	9.8*	8.3*	8.3*	7.3	7.5*					6.0	6.8*	11.8
	6.0							11.1*	11.1*	8.8	9.0*	7.1	7.9*	5.7	7.2*			5.6	6.9*	12.2
	4.5							10.5	12.1*	8.3	9.7*	6.8	8.3*	5.6	7.4*			5.3	7.0*	12.4
	3.0							10.1	12.8*	8.0	10.2*	6.5	8.6*	5.5	7.6*			5.2	7.3*	12.3
	1.5							9.9	12.9*	7.8	10.5*	6.4	8.8*	5.4	7.6*			5.3	7.5*	12.2
	0							9.9	12.7*	7.8	10.5*	6.4	8.8*					5.6	7.6*	11.8
	-1.5					10.4*	10.4*	14.0	14.7*	10.0	12.2*	7.8	10.1*	6.4	8.4*			6.1	7.7*	11.1
	-3.0					15.6*	15.6*	13.5*	13.5*	10.3	11.3*	8.0	9.3*					7.0	7.7*	10.3
	-4.5					13.6*	13.6*	11.6*	11.6*	9.7*	9.7*							7.5*	7.5*	9.0
	-6.0							8.4*	8.4*									6.6*	6.6*	7.3
	-7.5																			
	-9.0																			

## Stick 3.80 m

Under-carriage	m	3.0 m		4.5 m		6.0 m		7.5 m		9.0 m		10.5 m		12.0 m		13.5 m		m		
LC	12.0																	5.5*	5.5*	10.2
	10.5																	5.1*	5.1*	11.3
	9.0																	4.9*	4.9*	12.1
	7.5									6.9*	6.9*	6.4*	6.4*					4.8*	4.8*	12.7
	6.0					10.9*	10.9*	8.8*	8.8*	7.6*	7.6*	6.8*	6.8*	5.4	6.4*			4.5	4.8*	13.0
	4.5					10.1*	10.1*	9.9	11.3*	8.3	8.3*	6.5	7.3*	5.2	6.7*			4.3	4.9*	13.2
	3.0					9.9	11.3*	9.3	12.2*	7.3	9.7*	5.9	8.2*	4.9	7.2*			4.2	5.1*	13.2
	1.5					7.4*	7.4*	9.0	12.7*	7.1	10.2*	5.7	8.5*	4.7	7.4*			4.2	5.3*	13.0
	0					12.1*	12.1*	8.8	12.8*	6.9	10.4*	5.6	8.7*	4.7	7.4*			4.4	5.8*	12.7
	-1.5					12.3	15.6*	8.9	12.5*	6.9	10.3*	5.6	8.6*	4.7	7.1*			4.7	6.4*	12.1
	-3.0	12.9*	12.9*	10.5*	10.5*	12.6	14.7*	9.0	11.9*	7.0	9.8*	5.7	8.1*					5.3	7.1*	11.3
	-4.5	19.1*	19.1*	16.2*	16.2*	13.0	13.2*	9.3	10.8*	7.2	8.8*							6.3	7.1*	10.2
	-6.0			13.2*	13.2*	10.8*	10.8*	8.8*	8.8*									6.8*	6.8*	8.7
	-7.5																			
	-9.0																			
LC-V	12.0																	6.0*	6.0*	10.2
	10.5																	5.4*	5.4*	11.3
	9.0																	5.1*	5.1*	11.3
	7.5																	4.9*	4.9*	12.1
	6.0									7.0*	7.0*	6.5*	6.5*	6.0	6.4*			4.8*	4.8*	12.7
	4.5					11.1*	11.1*	8.9*	8.9*	7.6*	7.6*	6.9*	6.9*	5.9	6.5*			4.8*	4.8*	13.0
	3.0					10.2*	10.2*	10.8	11.4*	8.4*	8.4*	7.2	7.3*	5.8	6.7*			4.8*	4.8*	13.2
	1.5					10.8	11.4*	10.2	12.3*	8.5	9.1*	6.8	7.8*	5.6	7.0*			4.8	4.9*	13.0
	0					10.2	12.3*	9.9	12.7*	8.1	9.8*	6.6	8.3*	5.4	7.2*			4.7	5.1*	13.2
	-1.5					7.8*	7.8*	9.9	12.7*	7.8	10.2*	6.4	8.6*	5.3	7.4*			4.7	5.4*	13.0
	-3.0					12.6*	12.6*	9.8	12.8*	7.7	10.4*	6.3	8.7*	5.2	7.4*			4.9	5.8*	12.7
	-4.5	13.4*	13.4*	11.0*	11.0*	13.7	15.6*	9.9	12.5*	7.7	10.3*	6.3	8.6*	5.3	7.1*			5.3	6.5*	12.1
	-6.0	19.6*	19.6*	17.4*	17.4*	13.9	14.6*	10.0	11.9*	7.8	9.8*	6.4	8.0*					5.9	7.1*	11.3
	-7.5			16.0*	16.0*	13.0*	13.0*	10.3	10.7*	8.1	8.7*							7.1	7.1*	10.2
	-9.0			12.9*	12.9*	10.6*	10.6*	8.5*	8.5*									6.7*	6.7*	8.7

Height   
 Can be slewed through 360°   
 In longitudinal position of undercarriage   
 Max. reach   
 \* Limited by hydr. capacity



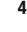



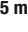




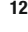

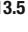



The load values are quoted in tons (t) at stick end (without bucket), and may be swung 360° on firm and even ground. Adjacent values are valid for the undercarriage when in the longitudinal position. Capacities are valid for 600 mm wide track pads. Indicated loads are based on ISO 10567 standard and do not exceed 75% of tipping or 87% of hydraulic capacity (indicated via \*). Without bucket cylinder, link and lever the lift capacities will increase by 825 kg / 620 kg\*. Lifting capacity of the excavator is limited by machine stability and hydraulic capacity.

According to European Standard, EN 474-5: In the European Union excavators have to be equipped with an overload warning device, a load diagram and automatic safety check valves on hoist cylinders and stick cylinder(s), when they are used for lifting operations which require the use of lifting accessories.

\* just for stick 5.00 m



## Stick 5.00 m

Under-carriage	3.0 m		4.5 m		6.0 m		7.5 m		9.0 m		10.5 m		12.0 m		13.5 m		Max. reach			
	m																		m	
LC	12.0																	4.1*	4.1*	10.4
	10.5																	3.8*	3.8*	11.6
	9.0																	3.6*	3.6*	12.6
	7.5																	5.7*	5.7*	13.3
	6.0																	5.8*	5.8*	13.8
	4.5					11.6*	11.6*	9.1*	9.1*	6.9*	6.9*	6.4*	6.4*	5.8*	5.8*	4.7	5.2*	3.4*	3.4*	14.2
	3.0					14.0*	14.0*	10.5*	10.5*	8.3	8.6*	6.6	6.6*	5.6	6.3*	4.6	6.0*	3.5*	3.5*	14.3
	1.5					11.9*	11.9*	10.0	11.7*	7.8	9.4*	6.3	8.0*	5.2	7.1*	4.3	6.4*	3.7*	3.7*	14.3
	0					11.6*	11.6*	9.4	12.5*	7.4	10.0*	6.0	8.5*	5.0	7.4*	4.2	6.6*	3.9*	3.9*	14.1
	-1.5			7.0*	7.0*	12.4	13.7*	9.2	13.0*	7.2	10.4*	5.9	8.8*	4.9	7.6*	4.1	6.5	4.0	4.1*	13.8
-3.0	7.5*	7.5*	10.5*	10.5*	12.4	16.6*	9.1	13.0*	7.1	10.6*	5.8	8.9*	4.8	7.6*			4.2	4.6*	13.3	
-4.5	11.1*	11.1*	14.5*	14.5*	12.5	16.0*	9.1	12.7*	7.1	10.4*	5.8	8.7*	4.9	7.3*			4.6	5.2*	12.6	
-6.0	15.1*	15.1*	19.2*	19.2*	12.8	14.9*	9.3	12.0*	7.2	9.9*	5.9	8.1*					5.3	6.1*	11.6	
-7.5	20.1*	20.1*	16.8*	16.8*	13.2	13.3*	9.6	10.7*	7.5	8.7*							6.4	6.8*	10.3	
-9.0			13.2*	13.2*	10.5*	10.5*	8.3*	8.3*									6.6*	6.6*	8.6	
LC-V	12.0																	4.1*	4.1*	10.4
	10.5																	3.8*	3.8*	11.6
	9.0																	3.6*	3.6*	12.6
	7.5																	5.7*	5.7*	13.3
	6.0																	5.8*	5.8*	13.8
	4.5					11.8*	11.8*	9.3*	9.3*	7.0*	7.0*	6.4*	6.4*	6.0*	6.0*	5.1	5.3*	3.4*	3.4*	14.2
	3.0					14.2*	14.2*	10.6*	10.6*	8.7*	8.7*	7.3	7.5*	5.9	6.7*	4.9	6.2*	3.5*	3.5*	14.3
	1.5					11.8*	11.8*	10.9	11.8*	8.6	9.5*	6.9	8.0*	5.7	7.1*	4.8	6.4*	3.7*	3.7*	14.3
	0					11.7*	11.7*	10.4	12.6*	8.2	10.1*	6.7	8.5*	5.5	7.4*	4.7	6.6*	3.9*	3.9*	14.1
	-1.5			7.3*	7.3*	13.7	13.9*	10.1	13.0*	8.0	10.5*	6.5	8.8*	5.4	7.6*	4.6	6.5*	4.2*	4.2*	13.8
-3.0	7.8*	7.8*	10.8*	10.8*	13.7	16.6*	10.0	13.0*	7.9	10.6*	6.4	8.9*	5.4	7.6*			4.6*	4.6*	13.3	
-4.5	11.4*	11.4*	14.9*	14.9*	13.9	15.9*	10.1	12.7*	7.9	10.4*	6.4	8.7*	5.4	7.3*			5.2	5.2*	12.6	
-6.0	15.5*	15.5*	19.0*	19.0*	14.2	14.8*	10.3	11.9*	8.0	9.8*	6.6	8.1*					5.9	6.2*	11.6	
-7.5	20.6*	20.6*	16.5*	16.5*	13.1*	13.1*	10.6*	10.6*	8.3	8.5*							6.8*	6.8*	10.3	
-9.0			12.8*	12.8*	10.2*	10.2*	8.0*	8.0*									6.5*	6.5*	8.6	

 Height  Can be slewed through 360°  In longitudinal position of undercarriage  Max. reach \* Limited by hydr. capacity

The load values are quoted in tons (t) at stick end (without bucket), and may be swung 360° on firm and even ground. Adjacent values are valid for the undercarriage when in the longitudinal position. Capacities are valid for 600 mm wide track pads. Indicated loads are based on ISO 10567 standard and do not exceed 75 % of tipping or 87 % of hydraulic capacity (indicated via \*). Without bucket cylinder, link and lever the lift capacities will increase by 825 kg / 620 kg\*. Lifting capacity of the excavator is limited by machine stability and hydraulic capacity.

According to European Standard, EN 474-5: In the European Union excavators have to be equipped with an overload warning device, a load diagram and automatic safety check valves on hoist cylinders and stick cylinder(s), when they are used for lifting operations which require the use of lifting accessories.

\* just for stick 5.00 m

## Available Buckets

### Sticks 2.35 m/2.90 m/3.80 m

Mounting	Execution	Width (mm)	Capacity (m <sup>3</sup> )	Teeth	Number of teeth	Weight (kg)
Direct	STD	1,350	1.65	Z 70	3	2,100
Direct	STD	1,550	2.00	Z 70	4	2,250
Direct	STD	1,750	2.35	Z 70	4	2,450
Direct	STD	1,950	2.70	Z 70	5	2,650
Direct	STD	1,950	3.00	Z 70	5	2,750
Direct	STD	2,100	3.30	Z 70	5	2,850
Direct	HD	1,350	1.65	Z 70	3	2,350
Direct	HD	1,550	2.00	Z 70	4	2,650
Direct	HD	1,750	2.35	Z 70	4	2,850
Direct	HD	1,950	2.70	Z 70	5	3,100
Direct	HD	1,950	3.00	Z 70	5	3,200
Direct	HD	1,950	3.30	Z 70	5	3,250
Direct	HD	2,100	3.50	Z 70	5	3,500
SWA 77	STD	1,350	1.65	Z 70	3	2,250
SWA 77	STD	1,550	2.00	Z 70	4	2,400
SWA 77	STD	1,750	2.35	Z 70	4	2,550
SWA 77	STD	1,950	2.70	Z 70	5	2,800
SWA 77	STD	1,950	3.00	Z 70	5	2,900
SWA 77	HD	1,350	1.65	Z 70	3	2,350
SWA 77	HD	1,550	2.00	Z 70	4	2,700
SWA 77	HD	1,750	2.35	Z 70	4	2,900
SWA 77	HD	1,950	2.70	Z 70	5	3,150

### Stick 5.00 m (Kinematic R 946 Litronic)

Mounting	Execution	Width (mm)	Capacity (m <sup>3</sup> )	Teeth	Number of teeth	Weight (kg)
Direct	STD	1,200	1.25	Z 50	4	1,300
Direct	STD	1,350	1.50	Z 50	4	1,400
Direct	STD	1,500	1.75	Z 50	4	1,500
Direct	STD	1,650	2.00	Z 50	4	1,600

## Available Front Shovels

Mounting	Execution	Width (mm)	Capacity (m <sup>3</sup> )	Teeth	Number of teeth	Weight (kg)
Direct	2	1,850	2.50	Z 70	5	4,700
Direct	3	1,850	2.50	Z 70	5	5,050
Direct	1	2,150	3.10	Z 70	5	5,150
Direct	2	2,150	3.10	Z 70	5	5,650
Direct	3	2,150	3.10	Z 70	5	6,050

# Serial Equipment

## Undercarriage

Lashing eyes  
Sprocket with dirt ejector  
Track and carrier rollers, sealed and lifetime-lubricated

## Uppercarriage

Access platforms without protruding parts  
Anti-skid surfaces  
Automatic swing brake lock  
Centralised lubrication system (automatic)  
DEF tank filling indicator  
DEF tank lockable access hatch  
Engine hood with gas spring opening  
Extended tool set including tool box  
Handrails  
Lockable fuel tank cap with padlock  
Lockable service doors  
Lockable storage box  
Main switch, manual, lockable  
Protection grid on radiator fan  
Sound insulation  
Swing-out radiators

## Hydraulic System

Dedicated swing circuit  
Filter with integrated fine filters  
Hydraulic pressure measuring ports  
Hydraulic tank shut-off valve  
Magnetic rod  
Pressure accumulator for controlled lowering of equipment with engine turned off

## Engine

Air filter with automatic dust ejector  
Automatic engine idling / speed increase, controlled via joystick sensors  
Common-Rail injection system  
Exhaust gas after-treatment system – DOC + DPF + SCR  
Fixed geometry turbocharger  
Fuel fine filter  
Fuel pre-filter and water separator  
Fuel priming pump  
Intercooler  
Power Pack EU Stage V  
Stepless adjustable engine speed

## Operator's Cab

7" multifunction colour touchscreen  
Air conditioning, automatic, tri-zone, controlled via display  
Armrests adjustable in width, height and inclination  
Bottle holder  
Cab air filters housing, accessible from ground level  
Cab door sliding windows  
Cigarette lighter  
Coat hook  
DEF consumption on touchscreen  
DEF level on touchscreen  
Electric socket in cabin (12 V)  
Electric socket in cabin (24 V)  
Emergency hammer  
Engine oil level on touchscreen  
Footrest  
Fuel consumption on touchscreen  
Fuel level on touchscreen  
Interior lighting  
Laminated right hand side window  
LiDAT Plus (Liebherr data transfer system) \*  
Mechanical hour meters, visible from ground level  
Movement priority between swing and boom, adjustable via touchscreen  
Rain hood over front window opening  
Rearview mirror  
Rear view monitoring camera  
Rear window emergency exit  
Right hand side view monitoring camera  
Roll-down sun blinds for windscreen and roof window  
Rubber floor mat, fixed on floor and removable  
Storage box  
Storage nets  
Storage spaces  
Tilttable console left  
Tinted windows  
Visco-elastic damping  
Windscreen wiper and washer  
Work mode selector

## Equipment

Anti-drift system boom cylinders  
Anti-drift system stick cylinder  
Boom cylinders regeneration  
Pipe fracture safety valves for boom cylinders  
Pivot points made of cast steel  
SAE split flanges on high pressure lines  
Stick cylinder regeneration

\* optionally extendable after one year

# Equipment Standard/Option

## Undercarriage

Chain guide 3 pieces	•
Chain guide 4 pieces	+
Chain guide full length	+
Reinforced cover and base plate for centre section (HD and LC undercarriage)	+
Reinforced cover plate for centre section (LC-V undercarriage)	+
Screws protection for sideframe (LC-V undercarriage)	+
Special painting	+
Track pads triple grouser 600 mm	•
Track pads triple grouser 750/900 mm	+
Travel motor housing protection	+
Undercarriage HD	+
Undercarriage LC	+
Undercarriage LC-V	+

## Uppercarriage

Air pre-filter with cyclonical dust trap	+
Boxing ring	+
Catwalk tiltable front left	+
Catwalks tiltable left and right	+
Counterweight heavy 11.0 t	+
Counterweight standard 9.0 t	•
Electric socket on uppercarriage (24 V)	+
Fixed cab riser 800 mm	+
Headlight on uppercarriage, lateral left, LED+, 1 piece	+1)
Headlight on uppercarriage, lateral right, LED+, 1 piece	+1)
Headlights on uppercarriage, front, LED, 2 pieces, protections included	•1)
Headlights on uppercarriage, front, LED+, 2 pieces, protections included	+1)
Headlights on uppercarriage, rear, LED+, 2 pieces	+1)
Lighting for tank area <sup>1)</sup>	+
Lighting for uppercarriage access <sup>1)</sup>	+
Pre-heating system for fuel	+
Radiator fine mesh protection grid	+
Reversible fan drive	+
Skyview 360°	+
Special painting	+
Swing ring and lubrication hoses protection	+
Tank refilling pump fuel	+
Uppercarriage bottom and side protection	+
Wiggins coupling for fuel	+

## Hydraulic System

Bypass filter for hydraulic oil	+
Liebherr hydraulic oil	•
Liebherr hydraulic oil, adapted for extreme climate conditions	+
Liebherr hydraulic oil, biodegradable	+

## Engine

Automatic engine shutdown after idling	+
Engine shut-down with overrun	+
Lighting for engine compartment <sup>1)</sup>	+



## Operator's Cab

2" seat belt with retractor	•
3" seat belt with retractor, orange colour	+
4-points seat belt	+
Acoustic travel alarm deactivatable	+
Auxiliary heater programmable	+
Bottom windscreen wiper	+
Cool box (12 V)	+
Dark tinted windows	+
Electrically adjustable and heated outside rear-view mirrors	+
Electronic immobiliser	+
Emergency stop in cab	+
FGPS front guard	+
FGPS front guard tiltable	+
Filter for hydraulic hammer return flow	+
Fire extinguisher	+
First-aid box	+
Follow me home	+
FOPS top guard	+
Handrests elevated for joysticks	+
Headlights on cab, front, LED, 2 pieces	• <sup>1)</sup>
Headlights on cab, front, LED+, 2 pieces	+ <sup>1)</sup>
Headlights on cab roof, front, LED+, 2 pieces	+ <sup>1)</sup>
High pressure circuit switchable on pedals or mini-joystick	+
High pressure circuit with Tool Control (20 attachment adjustments on display)	+
Impact resistant one-piece windscreen	+
Impact resistant roof window	+
Integral protection guard	+
Laminated roof window	•
Lighting for cabin access <sup>1)</sup>	+
Luminosity control (LED+ headlights) <sup>1)</sup>	+
Medium pressure circuit	+
Mini-joysticks proportional	+
Movement restriction for boom	+
Movement restriction for stick	+
Operator seat Comfort	•
Operator seat Premium	+
Overload warning system	+
Radio Comfort	+
Radio pre-installation	•
Retractable laminated two-piece windscreen	•
Roof sun shield	+
Roof window wiper	+
Rotating beacon on cabin, LED, 1 piece	+
Seat belt reminder	+
Shortcut button on joystick configurable	•
Special painting	+
Sun visor	+
Switch between high pressure and bucket cylinder controls	+
Windscreen bottom protection grid	+



## Equipment

Boom bottom protection	+
Boom cylinder rods protection	+
Bucket cylinder rod protection	+
Centralised lubrication extended for connecting link	+
Floating boom	+
Headlights on boom, LED, 2 pieces, protections included	• <sup>1)</sup>
Headlights on boom, LED+, 2 pieces, protections included	+ <sup>1)</sup>
Mono boom 6.70 m	+
Mono boom 7.60 m	+
Mono boom 9.20 m	+
Mono boom straight 8.00 m	+
Pipe fracture safety valve for stick cylinder	+
Preparation for ripper tooth	+
Quick coupler SWA 77 hydraulic	+
Shovel boom 4.20 m	+
Shovel stick 2.78 m	+
Special painting	+
Stick 2.35 m	+
Stick 2.90 m	+
Stick 3.80 m	+
Stick 5.00 m	+
Stick bottom protection	+
Tool Management	+
Two-piece boom 7.90 m	+

• = Standard, + = Option

<sup>1)</sup> Equipment not individually available, but only as predefined lighting packages  
Non-exhaustive list, please contact us for further information.

**Options and / or special equipments, supplied by vendors other than Liebherr, are only to be installed with the knowledge and approval of Liebherr in order to retain warranty.**







# The Liebherr Group of Companies



## Wide Product Range

The Liebherr Group is one of the largest construction equipment manufacturers in the world. Liebherr's high-value products and services enjoy a high reputation in many other fields. The wide range includes domestic appliances, aerospace and transportation systems, machine tools and maritime cranes.

## Exceptional Customer Benefit

Every product line provides a complete range of models in many different versions. With both their technical excellence and acknowledged quality, Liebherr products offer a maximum of customer benefits in practical applications.

## State-of-the-art Technology

To provide consistent, top quality products, Liebherr attaches great importance to each product area, its components and core technologies. Important modules and components are developed and manufactured in-house, for instance the entire drive and control technology for construction equipment.

## Worldwide and Independent

Hans Liebherr founded the Liebherr family company in 1949. Since then, the family business has steadily grown to a group of more than 130 companies with nearly 44,000 employees located on all continents. The corporate headquarters of the Group is Liebherr-International AG in Bulle, Switzerland. The Liebherr family is the sole owner of the company.

[www.liebherr.com](http://www.liebherr.com)

## Liebherr-France SAS

2 avenue Joseph Rey, B.P. 90287, FR-68005 Colmar Cedex  
☎ +33 389 21 30 30, Fax +33 389 21 37 93  
[www.liebherr.com](http://www.liebherr.com), E-Mail: [info.lfr@liebherr.com](mailto:info.lfr@liebherr.com)  
[www.facebook.com/LiebherrConstruction](https://www.facebook.com/LiebherrConstruction)