

# Crawler Tractor

## **PR 726**

Litronic®

Operating Weight:  
**16,000 – 19,800 kg**  
**35,274 – 43,651 lb**

Engine Output:  
**120 kW / 163 HP**

**Stage IV / Tier 4f**



# **LIEBHERR**

# Technical Data



## Engine

<b>Liebherr Diesel engine</b>	D 934 A7 Emission regulations according to 97/68/EC, 2004/26/EC Stage IV, EPA/CARB Tier 4f
<b>Rated power (net)</b>	
<b>ISO 9249</b>	120 kW/163 HP
<b>SAE J1349</b>	120 kW/161 HP
<b>Maximum power (net)</b>	
<b>ISO 9249</b>	140 kW/190 HP
<b>SAE J1349</b>	140 kW/188 HP
<b>Rated speed</b>	2,000 rpm
<b>Displacement</b>	7 l/427 in <sup>3</sup>
<b>Design</b>	4 cylinder in-line engine, water-cooled, turbocharged, air-to-air intercooler
<b>Injection system</b>	Direct fuel injection, Common Rail, electronic control
<b>Lubrication</b>	Pressurised lube system, engine lubrication guaranteed for inclinations up to 45°, on all sides
<b>Operating voltage</b>	24 V
<b>Alternator</b>	140 A
<b>Starter</b>	7.8 kW/11 HP
<b>Batteries</b>	2 x 180 Ah/12 V
<b>Air cleaner</b>	Dry-type air cleaner with pre-cleaner, main and safety elements, control light in the operator's cab
<b>Cooling system</b>	Combi radiator, comprising radiators for water, hydraulic fluid and charge air. Hydrostatic fan drive



## Hydraulics

<b>Hydraulic system</b>	Load sensing (demand-controlled)
<b>Pump type</b>	Swash plate piston pump
<b>Pump flow max.</b>	148 l/min./32.6 Imp.gpm
<b>Pressure limitation</b>	200 bar/2,900 psi
<b>Control valve</b>	2 segments, expandable to 4
<b>Filter system</b>	Return filter with magnetic rod in the hydraulic tank
<b>Control</b>	Single joystick for all blade functions



## Travel Drive, Control

<b>Transmission system</b>	Infinitely variable hydrostatic travel drive, independent drive for each track
<b>Travel speed*</b>	Continuously variable
Speed range 1 (reverse):	0 – 4.0 km/h/2.5 mph (4.5 km/h/2.8 mph)
Speed range 2 (reverse):	0 – 6.0 km/h/3.7 mph (8.0 km/h/4.9 mph)
Speed range 3 (reverse):	0 – 11.0 km/h/6.8 mph (11.0 km/h/6.8 mph)
	* Travel speed ranges can be set on the travel joystick (memory function)
<b>Electronic control</b>	The electronic system automatically adjusts travel speed and drawbar pull to match changing load conditions
<b>Steering</b>	Hydrostatic
<b>Service brake</b>	Hydrostatic (self-locking), wear-free
<b>Parking brake</b>	Multi-disk brake, wear-free, automatically applied with neutral joystick position
<b>Cooling system</b>	Hydraulic oil cooler integrated in combi radiator, hydrostatic fan drive
<b>Filter system</b>	Micro cartridge filters in replenishing circuit
<b>Final drive</b>	Combination spur gear with planetary gear, double-sealed (duo cone seals), temperature controlled
<b>Control</b>	Single joystick for all travel and steering functions



## Operator's Cab

<b>Cab</b>	Resiliently mounted cab with positive pressure ventilation, can be tilted with hand pump 40° to the rear. With integrated ROPS Rollover Protective Structure (EN ISO 3471) and FOPS Falling Objects Protective Structure (EN ISO 3449)
<b>Operator's seat</b>	Air-suspended comfort seat, fully adjustable
<b>Monitoring</b>	Touch screen: display of current machine information, automatic monitoring of operating conditions. Individual setting of machine parameters

## Undercarriage

	L	XL	LGP
<b>Design</b>	Undercarriage with rigid bottom rollers		
<b>Mounting</b>	Via separate pivot shafts and equalizer bar		
<b>Track chains</b>	Lubricated, single-grouser shoes, tensioning via a steel spring and grease tensioner		
<b>Links, each side</b>	42	46	46
<b>Track rollers, each side</b>	7	8	8
<b>Carrier rollers, each side</b>	2	2	2
<b>Sprocket segments, each side</b>	6	6	6
<b>Track shoes, standard</b>	610 mm / 24"	610 mm / 24"	812 mm / 32"
<b>Track shoes, optional</b>	508 mm / 20" 560 mm / 22"	508 mm / 20" 560 mm / 22"	711 mm / 28" 914 mm / 36"

## Sound Emissions

<b>Operator sound exposure ISO 6396</b>	$L_{pA} = 75$ dB(A) (in the cab)
<b>Exterior sound pressure 2000/14/EC</b>	$L_{WA} = 110$ dB(A) (to the environment)

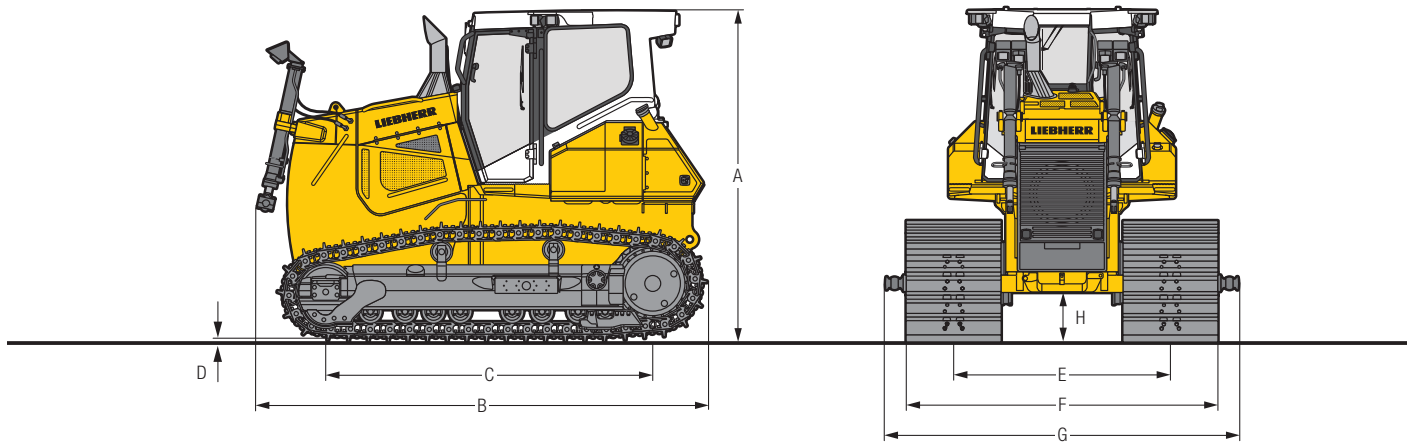
## Refill Capacities

<b>Fuel tank</b>	430 l / 94.6 Imp.gal
<b>Diesel Exhaust Fluid (DEF) tank</b>	50 l / 11 Imp.gal
<b>Cooling system</b>	41 l / 8.8 Imp.gal
<b>Engine oil, with filter</b>	29 l / 6.4 Imp.gal
<b>Hydraulic tank</b>	111 l / 24.4 Imp.gal
<b>Final drive L, XL, each side</b>	16 l / 3.5 Imp.gal
<b>Final drive LGP, each side</b>	22.5 l / 4.9 Imp.gal

## Drawbar Pull

<b>Max.</b>	268 kN
<b>at 1.5 km/h / 0.9 mph</b>	236 kN
<b>at 3.0 km/h / 1.9 mph</b>	123 kN
<b>at 6.0 km/h / 3.7 mph</b>	62 kN
<b>at 9.0 km/h / 5.6 mph</b>	41 kN

# Dimensions

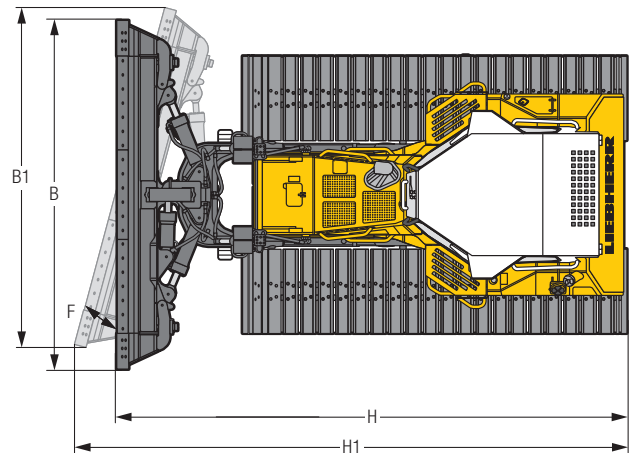
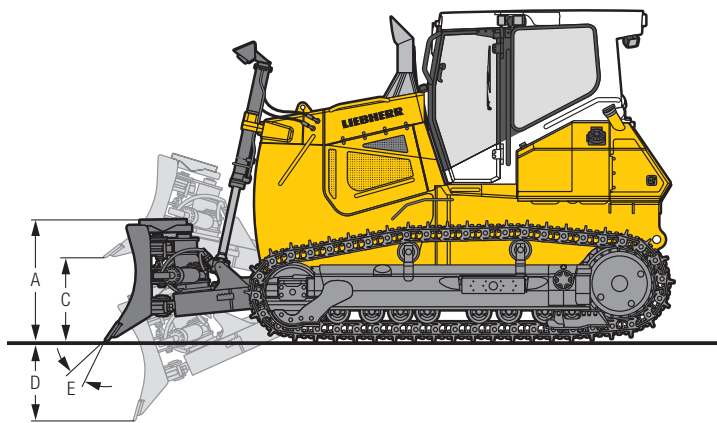


## Dimensions

Undercarriage			L	XL	LGP
<b>A</b> Height over cab	mm		3,149	3,149	3,149
	ft in		10'4"	10'4"	10'4"
<b>B</b> Overall length without attachments	mm		4,180	4,180	4,180
	ft in		13'9"	13'9"	13'9"
<b>C</b> Length of track on ground	mm		2,787	3,168	3,168
	ft in		9'2"	10'5"	10'5"
<b>D</b> Height of grousers	mm		56	56	56
	in		2.2"	2.2"	2.2"
<b>H</b> Ground clearance	mm		429	429	429
	ft in		1'5"	1'5"	1'5"
<b>E</b> Track gauge	mm		1,800	1,800	2,084
	ft in		5'11"	5'11"	6'10"
<b>G</b> Width over trunnions	mm		2,648	2,648	3,248
	ft in		8'8"	8'8"	10'8"
<b>F</b> Track shoes 508 mm / 20"	Width over tracks	mm / ft in	2,308 / 7'7"	2,308 / 7'7"	—
	Tractor shipping weight <sup>1)</sup>	kg / lb	13,712 / 30,296	14,283 / 31,489	—
<b>F</b> Track shoes 560 mm / 22"	Width over tracks	mm / ft in	2,360 / 7'9"	2,360 / 7'9"	—
	Tractor shipping weight <sup>1)</sup>	kg / lb	13,898 / 30,640	14,430 / 31,813	—
<b>F</b> Track shoes 610 mm / 24"	Width over tracks	mm / ft in	2,410 / 7'11"	2,410 / 7'11"	—
	Tractor shipping weight <sup>1)</sup>	kg / lb	14,026 / 30,922	14,570 / 32,121	—
<b>F</b> Track shoes 711 mm / 28"	Width over tracks	mm / ft in	—	—	2,795 / 9'2"
	Tractor shipping weight <sup>1)</sup>	kg / lb	—	—	15,050 / 33,180
<b>F</b> Track shoes 812 mm / 32"	Width over tracks	mm / ft in	—	—	2,896 / 9'6"
	Tractor shipping weight <sup>1)</sup>	kg / lb	—	—	15,342 / 33,823
<b>F</b> Track shoes 914 mm / 36"	Width over tracks	mm / ft in	—	—	2,998 / 9'10"
	Tractor shipping weight <sup>1)</sup>	kg / lb	—	—	15,623 / 34,443

<sup>1)</sup> Including coolant and lubricants, 20 % fuel, ROPS/FOPS cab.

# Front Attachments

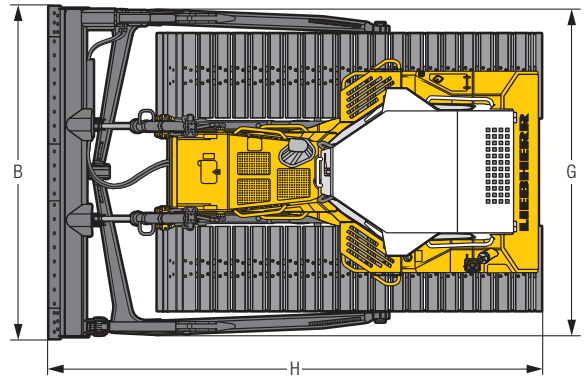
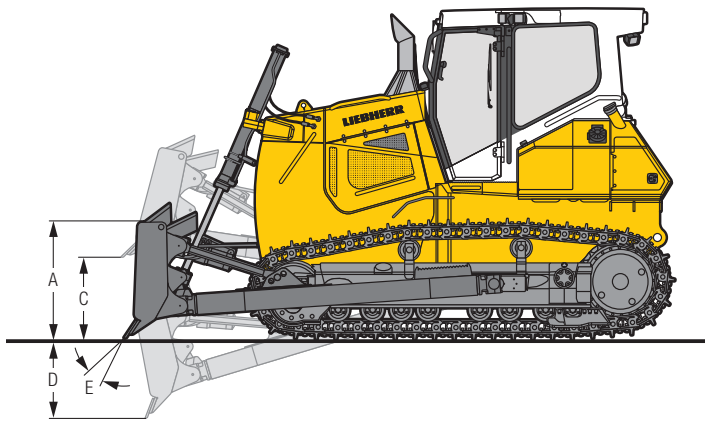


## 6-Way Blade with Inside Mounted Push Frame

		6-way blade	6-way blade with hinged corners	6-way blade	6-way blade with hinged corners	6-way blade	6-way blade with hinged corners
		L	L	XL	XL	LGP	LGP
<b>Undercarriage</b>							
<b>Blade capacity, ISO 9246</b>	<b>m<sup>3</sup></b>	3.17	3.17	3.17	3.17	3.39	3.39
	<b>yd<sup>3</sup></b>	4.15	4.15	4.15	4.15	4.43	4.43
<b>A Height of blade</b>	<b>mm</b>	1,200	1,200	1,200	1,200	1,100	1,100
	<b>ft in</b>	3'11"	3'11"	3'11"	3'11"	3'7"	3'7"
<b>B Width of blade</b>	<b>mm</b>	3,204	3,204	3,204	3,204	3,790	3,790
	<b>ft in</b>	10'6"	10'6"	10'6"	10'6"	12'5"	12'5"
<b>B1 Width of blade, angled</b>	<b>mm</b>	2,997	3,081	2,997	3,081	3,542	3,622
	<b>ft in</b>	9'10"	10'1"	9'10"	10'1"	11'7"	11'11"
<b>Transport width</b>	<b>mm</b>	2,997	2,430	2,997	2,430	3,542	2,998
	<b>ft in</b>	9'10"	8'	9'10"	8'	11'7"	9'10"
<b>C Lifting height</b>	<b>mm</b>	1,147	1,147	1,147	1,147	1,134	1,134
	<b>ft in</b>	3'9"	3'9"	3'9"	3'9"	3'9"	3'9"
<b>D Digging depth</b>	<b>mm</b>	475	475	475	475	469	469
	<b>ft in</b>	1'7"	1'7"	1'7"	1'7"	1'6"	1'6"
<b>E Blade pitch adjustment</b>		5°	5°	5°	5°	5°	5°
<b>F Blade angle adjustment</b>		23°	18°	23°	18°	23°	18°
<b>Max. blade tilt</b>	<b>mm</b>	473	473	473	473	558	555
	<b>ft in</b>	1'7"	1'7"	1'7"	1'7"	1'10"	1'10"
<b>H Overall length, blade straight</b>	<b>mm</b>	5,547	5,547	5,547	5,547	5,510	5,510
	<b>ft in</b>	18'2"	18'2"	18'2"	18'2"	18'1"	18'1"
<b>H1 Overall length, blade angled</b>	<b>mm</b>	6,118	6,006	6,118	6,006	6,201	6,070
	<b>ft in</b>	20'1"	19'8"	20'1"	19'8"	20'4"	19'11"
<b>Track shoes 508 mm / 20"</b>							
Operating weight <sup>1)</sup>	<b>kg/lb</b>	16,050 / 35,384	16,309 / 35,955	16,604 / 36,606	16,873 / 37,199	–	–
Ground pressure <sup>1)</sup>	<b>kg/cm<sup>2</sup> / psi</b>	0.57 / 8.11	0.58 / 8.25	0.52 / 7.39	0.52 / 7.39	–	–
<b>Track shoes 560 mm / 22"</b>							
Operating weight <sup>1)</sup>	<b>kg/lb</b>	16,206 / 35,728	16,475 / 36,321	16,751 / 36,930	17,020 / 37,523	–	–
Ground pressure <sup>1)</sup>	<b>kg/cm<sup>2</sup> / psi</b>	0.52 / 7.39	0.53 / 7.54	0.47 / 6.68	0.48 / 6.83	–	–
<b>Track shoes 610 mm / 24"</b>							
Operating weight <sup>1)</sup>	<b>kg/lb</b>	16,334 / 36,010	16,603 / 36,603	16,891 / 37,238	17,160 / 37,831	–	–
Ground pressure <sup>1)</sup>	<b>kg/cm<sup>2</sup> / psi</b>	0.48 / 6.83	0.49 / 6.97	0.44 / 6.26	0.44 / 6.26	–	–
<b>Track shoes 711 mm / 28"</b>							
Operating weight <sup>1)</sup>	<b>kg/lb</b>	–	–	–	–	17,488 / 38,554	17,757 / 39,147
Ground pressure <sup>1)</sup>	<b>kg/cm<sup>2</sup> / psi</b>	–	–	–	–	0.39 / 5.55	0.39 / 5.55
<b>Track shoes 812 mm / 32"</b>							
Operating weight <sup>1)</sup>	<b>kg/lb</b>	–	–	–	–	17,780 / 39,198	18,049 / 39,791
Ground pressure <sup>1)</sup>	<b>kg/cm<sup>2</sup> / psi</b>	–	–	–	–	0.35 / 4.98	0.35 / 4.98
<b>Track shoes 914 mm / 36"</b>							
Operating weight <sup>1)</sup>	<b>kg/lb</b>	–	–	–	–	18,061 / 39,818	18,330 / 40,411
Ground pressure <sup>1)</sup>	<b>kg/cm<sup>2</sup> / psi</b>	–	–	–	–	0.31 / 4.41	0.32 / 4.55

<sup>1)</sup> Including coolant and lubricants, 100 % fuel, ROPS/FOPS cab, operator, 6-way blade.

# Front Attachments



## Semi-U Blade and Straight Blade

		Semi-U blade L	Semi-U blade XL	Straight blade LGP
<b>Undercarriage</b>				
<b>Blade capacity, ISO 9246</b>	m <sup>3</sup>	4.27	4.27	3.43
	yd <sup>3</sup>	5.58	5.58	4.49
<b>A Height of blade</b>	mm	1,250	1,250	1,100
	ft in	4'1"	4'1"	3'7"
<b>B Width of blade</b>	mm	3,000	3,000	3,600
	ft in	9'10"	9'10"	11'10"
<b>C Lifting height</b>	mm	1,019	1,060	1,058
	ft in	3'4"	3'6"	3'6"
<b>D Digging depth</b>	mm	453	472	471
	ft in	1'6"	1'7"	1'7"
<b>E Blade pitch adjustment</b>		10°	10°	10°
<b>Max. blade tilt</b>	mm	636	636	613
	ft in	2'1"	2'1"	2'0"
<b>G Width over push frame</b>	mm	2,914	2,914	3,512
	ft in	9'7"	9'7"	11'6"
<b>H Overall length</b>	mm	5,366	5,556	5,337
	ft in	17'7"	17'7"	17'6"
<b>Track shoes 508 mm / 20"</b>				
Operating weight <sup>1)</sup>	kg / lb	15,949 / 35,161	16,504 / 36,385	–
Ground pressure <sup>1)</sup>	kg/cm <sup>2</sup> / psi	0.56 / 7.96	0.51 / 7.25	–
<b>Track shoes 560 mm / 22"</b>				
Operating weight <sup>1)</sup>	kg / lb	16,105 / 35,505	16,651 / 36,709	–
Ground pressure <sup>1)</sup>	kg/cm <sup>2</sup> / psi	0.52 / 7.39	0.47 / 6.68	–
<b>Track shoes 610 mm / 24"</b>				
Operating weight <sup>1)</sup>	kg / lb	16,233 / 35,788	16,791 / 37,018	–
Ground pressure <sup>1)</sup>	kg/cm <sup>2</sup> / psi	0.48 / 6.83	0.43 / 6.11	–
<b>Track shoes 711 mm / 28"</b>				
Operating weight <sup>1)</sup>	kg / lb	–	–	17,398 / 38,356
Ground pressure <sup>1)</sup>	kg/cm <sup>2</sup> / psi	–	–	0.39 / 5.55
<b>Track shoes 812 mm / 32"</b>				
Operating weight <sup>1)</sup>	kg / lb	–	–	17,690 / 39,000
Ground pressure <sup>1)</sup>	kg/cm <sup>2</sup> / psi	–	–	0.34 / 4.83
<b>Track shoes 914 mm / 36"</b>				
Operating weight <sup>1)</sup>	kg / lb	–	–	17,971 / 39,619
Ground pressure <sup>1)</sup>	kg/cm <sup>2</sup> / psi	–	–	0.31 / 4.41

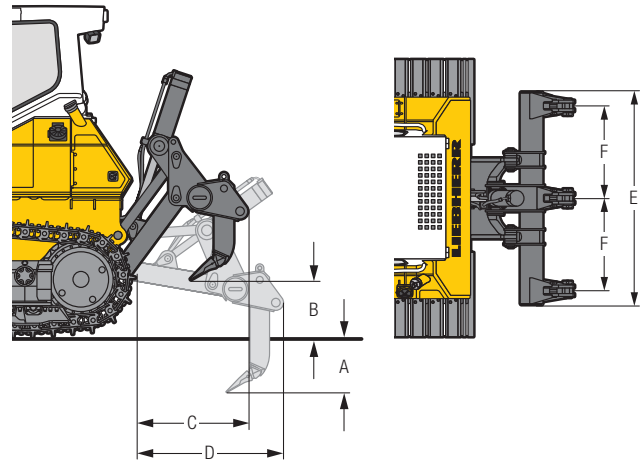
<sup>1)</sup> Including coolant and lubricants, 100 % fuel, ROPS/FOPS cab, operator, semi-U or straight blade.

# Rear Attachments



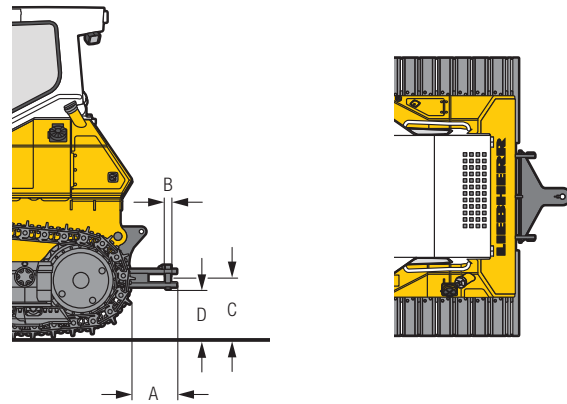
## 3-Shank Ripper

<b>A</b> Ripping depth (max./min.)	mm	500 / 350
	ft in	1'8" / 1'2"
<b>B</b> Lifting height (max./min.)	mm	650 / 500
	ft in	2'2" / 1'8"
<b>C</b> Additional length, attachment raised	mm	1,088
	ft in	3'7"
<b>D</b> Additional length, attachment lowered	mm	1,444
	ft in	4'9"
<b>E</b> Overall beam width	mm	2,300
	ft in	7'7"
<b>F</b> Distance between shanks	mm	1,000
	ft in	4'9"
Max. pitch adjustment		—
Weight	kg	1,448
	lb	3,192



## Drawbar

<b>A</b> Additional length	mm	<b>rigid</b> 479
	ft in	1'7"
<b>B</b> Socket pin diameter	mm	45
	in	1.77"
<b>C</b> Height of jaw	mm	529
	ft in	1'9"
<b>D</b> Ground clearance	mm	439
	ft in	1'5"
Jaw opening	mm	90
	in	3.54"
Weight	kg	211
	lb	465



# Equipment

## Base Machine

Additional handle on fuel tank	+
Air filter with automatic dust ejector	•
Air filter, dry type, dual step, with pre-filter	•
Air pre-cleaner Sy-Klone	+
Air pre-cleaner Top Air	+
Automatic engine shut-off	+
Battery compartment, lockable	•
Coal arrangement	1)
Cold environment arrangement	1)
Diesel Exhaust Fluid (DEF) tank, lockable	+
Diesel particle filter	+
Engine compartment doors, lockable	•
Fan, hinged	+
Fan, hydraulically driven	•
Fan, reversible	+
Forestry arrangement	1)
Fuel pre-filter	•
Grade control ready kit	+
Landfill arrangement	1)
LiDAT – Data transmission system	•
Liebherr diesel engine emission stage IV/Tier 4f	•
Liebherr hydraulic oil, biologically degradable	+
Lugs for crane lifting, front	•
Lugs for crane lifting, rear	+
Radiator guard, hinged	•
Radiator, wide-meshed	•
Refuelling pump, electric	+
Special paint scheme	+
Tool kit, extended	+
Towing hitch rear	•
Towing lug front	•
Woodchip arrangement	1)

## Hydraulic system

Blade float function	•
Blade quick drop function	•
Control block for 2 circuits	•
Hydraulic kit for ripper	+
Hydraulic kit for winch	+
Oil filter in hydraulic tank	•
Variable flow pump, load-sensing	•

## Travel Drive

Emergency stop	•
Final drives planetary gear	•
Inching brake pedal	+
Load limit control, electronic	•
Parking brake, automatic	•
Seat contact switch	•
Travel control, 3 speed ranges	•
Travel drive joystick, detented	+
Travel drive joystick, proportional	•
Travel drive, hydrostatic	•

## Operator's Cab

Air-conditioner	•
Armrests 3D adjustable	•
Coat hook	•
Dome light	•
Extension of cab door footsteps	+
Fire extinguisher in the cab	+
Footrest on the front console	+
Operator's seat Comfort, air-suspended	•
Operator's seat Premium, air-suspended	+
Pressurised cab	•
Protective grid, rear window	+
Radio	+
Radio preparation kit	+
Rear-view camera	+
Rear-view mirror, inside	•
Rear-view mirrors, external	+
ROPS/FOPS integrated	•
Safety glass tinted	•
Sliding window left	+
Sliding window right	+
Socket 12 V	•
Sun visor, front	+
Touch-controlled colour display	•
Warm water heating	•
Windshield washer system	•
Windshield wipers front, rear, doors, with intermittent function	•

• = Standard, + = Option, 1) on demand at your dealer



# Equipment



## Electrical System

4 working lights on the cab, front	•
2 working lights on the cab, rear	•
1 working light on each lift cylinder	•
2 additional working lights on the cab, rear	+
1 additional working light on each lift cylinder	+
All working lights in LED version	+
2 cold start batteries	•
Back-up alarm	+
Back-up alarm, acoustic and visual	+
Back-up alarm, switchable	+
Battery main switch	•
Battery main switch, lockable	+
Beacon	+
Horn	•
Immobiliser, electronic	+
On-board voltage 24 V	•

## Undercarriage

Master link, two-piece	•
Sprocket segments with recesses	+
Sprocket segments, bolted	•
Track frame, closed	•
Track guard, full length	+
Track guide, centre part	+
Track guides, front and rear	•
Track pads with mud holes	+
Track shoes, moderate service	•
Tracks, oil-lubricated	•
Undercarriage L	+
Undercarriage XL	+
Undercarriage LGP	+
Undercarriage with rotary bushings FTB	+



## Attachments Front

6-way blade	+
6-way blade with hinged corners	+
Coal U-blade	1)
Guards for hydraulic cylinders, 6-way blade	+
Mechanical angle blade	1)
Semi-U blade	+
Side wings for 6-way blade, bolt-on	+
Side wings for straight blade, weld-on	+
Spill plate	+
Straight blade	+
Trash rack	+
Wear plates on push frame	+
Woodchip U-blade	1)



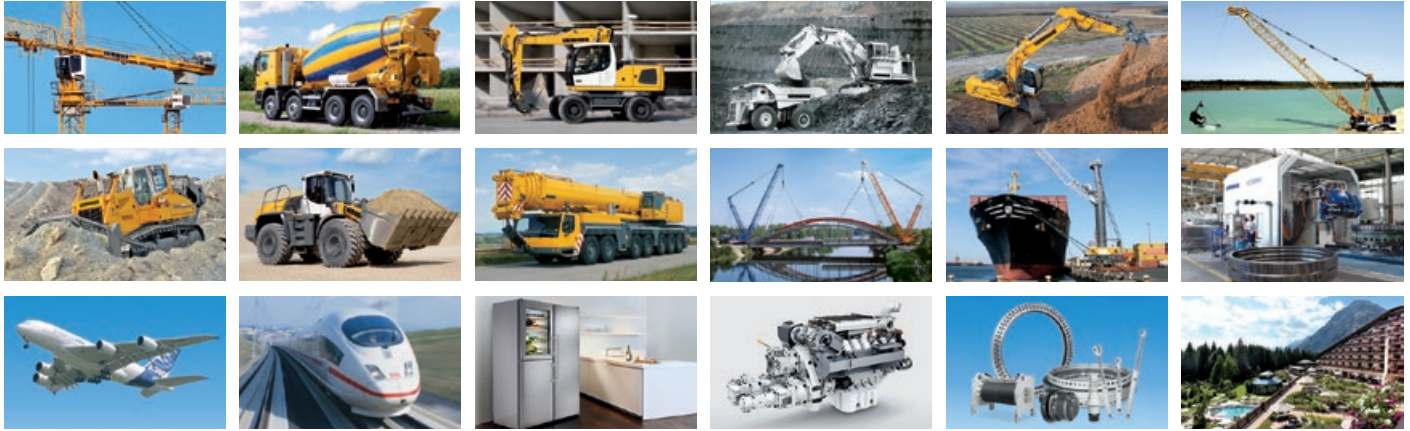
## Attachments Rear

Counterweight, rear	+
Drawbar rear, rigid	+
Mounting plate for third-party equipment	+
Ripper, 3 shanks	+
Ripper, 5 shanks	+
Towing hitch on ripper	+
Winch	+

• = Standard, + = Option, 1) on demand at your dealer

Standard equipment may vary. Consult your Liebherr dealer for details.

# The Liebherr Group of Companies



## Wide Product Range

The Liebherr Group is one of the largest construction equipment manufacturers in the world. Liebherr's high-value products and services enjoy a high reputation in many other fields. The wide range includes domestic appliances, aerospace and transportation systems, machine tools and maritime cranes.

## Exceptional Customer Benefit

Every product line provides a complete range of models in many different versions. With both their technical excellence and acknowledged quality, Liebherr products offer a maximum of customer benefits in practical application.

## State-of-the-art Technology

To provide consistent, top quality products, Liebherr attaches great importance to each product area, its components and core technologies. Important modules and components are developed and manufactured in-house, for instance the entire drive and control technology for construction equipment.

## Worldwide and Independent

Hans Liebherr founded the Liebherr family company in 1949. Since that time, the enterprise has steadily grown to a group of more than 130 companies with over 41,000 employees located on all continents. The corporate headquarters of the Group is Liebherr-International AG in Bulle, Switzerland. The Liebherr family is the sole owner of the company.

[www.liebherr.com](http://www.liebherr.com)

## Liebherr-Werk Telfs GmbH

Hans Liebherr-Straße 35, A-6410 Telfs

+43 50809 6-100, Fax +43 50809 6-7772

[www.liebherr.com](http://www.liebherr.com), E-Mail: [lwt.marketing@liebherr.com](mailto:lwt.marketing@liebherr.com)

[www.facebook.com/LiebherrConstruction](https://www.facebook.com/LiebherrConstruction)