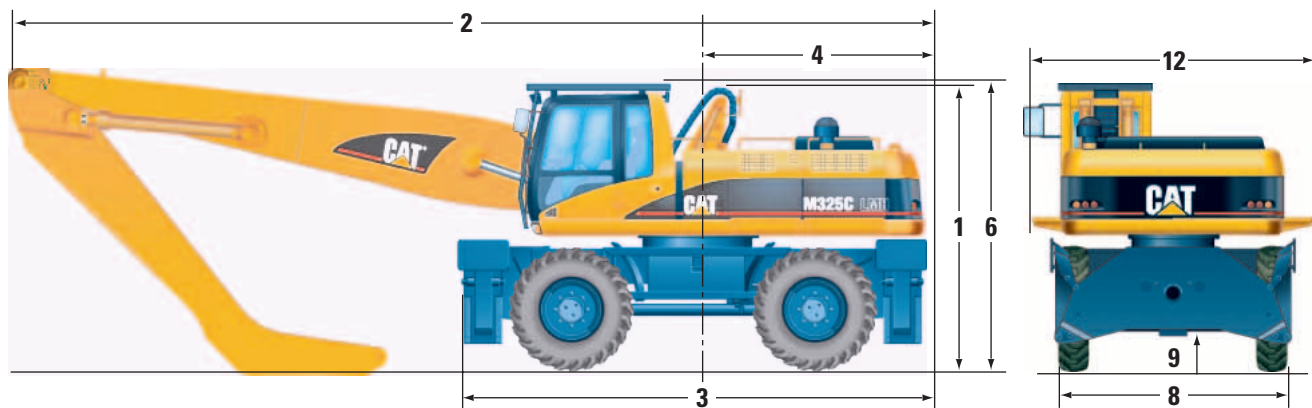


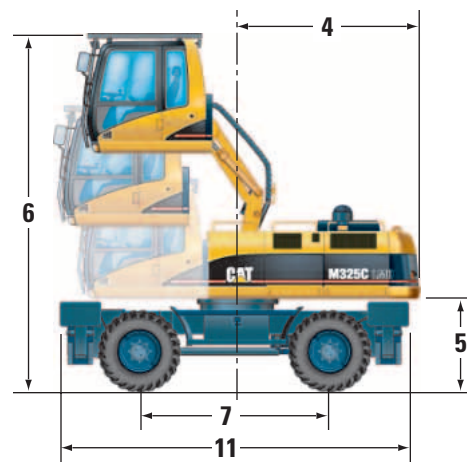
M325C LMH Wheel Material Handler – Millyard

Dimensions

All dimensions are approximate — measured in mm.



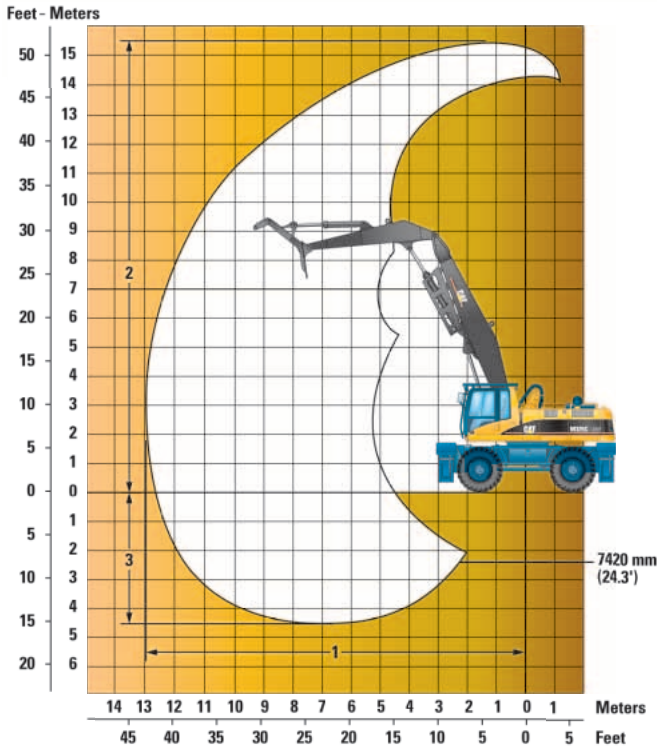
	M325C LMH
1 Shipping height	
without stick (at Hydraulic Cab Riser)	3785 mm (12.4')
with two piece MH boom and 6000 mm stick	3785 mm (12.4')
with two piece MH boom and 7420 mm stick	4575 mm (15.0')
with over-under heel boom and 4050 mm stick	3785 mm (12.4')
with butt-n-top boom and 4350 mm stick	3785 mm (12.4')
2 Shipping length	
with two piece MH boom, without stick	12 160 mm (39.9')
with two piece MH boom and 6000 mm stick	12 155 mm (39.9')
with two piece MH boom and 7420 mm stick	11 970 mm (39.3')
with over-under heel boom and stick (stick extended)	14 560 mm (47.8')
with butt-n-top boom and stick (stick extended)	14 100 mm (46.3')
3 Machine length	6230 mm (20.4')
4 Tail swing radius	3055 mm (10.0')
5 Counterweight ground clearance	1710 mm (5.6')
6 Cab height w/o FOGs	3635 mm (11.9')
with FOG ground	3765 mm (12.4')
with Hydraulic Cab Riser up without FOGs	6045 mm (19.8')
with Hydraulic Cab Riser up with FOGs	6175 mm (20.3')
7 Wheel base	3200 mm (10.5')
8 Shipping width	2990 mm (9.8')
outside tires	3020 mm (9.9')
outside stabilizers	3235 mm (10.6')
9 Ground clearance	270 mm (0.9')
10 Width with stabilizers on ground	5240 mm (17.2')
11 Undercarriage length	6230 mm (20.7')
12 Body width	
including steps	3700 mm (12.1')
without steps	2950 mm (9.7')



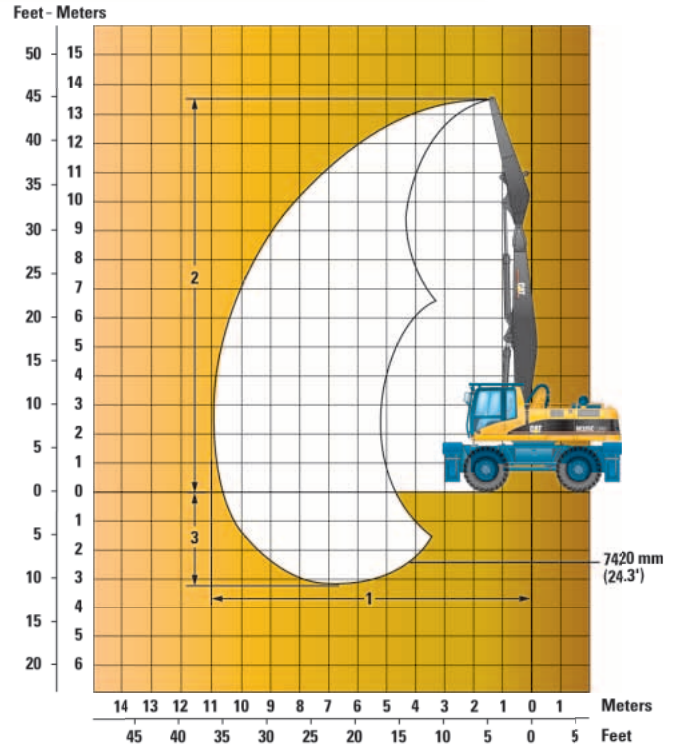
M325C LMH Wheel Material Handler – Millyard

Working Ranges

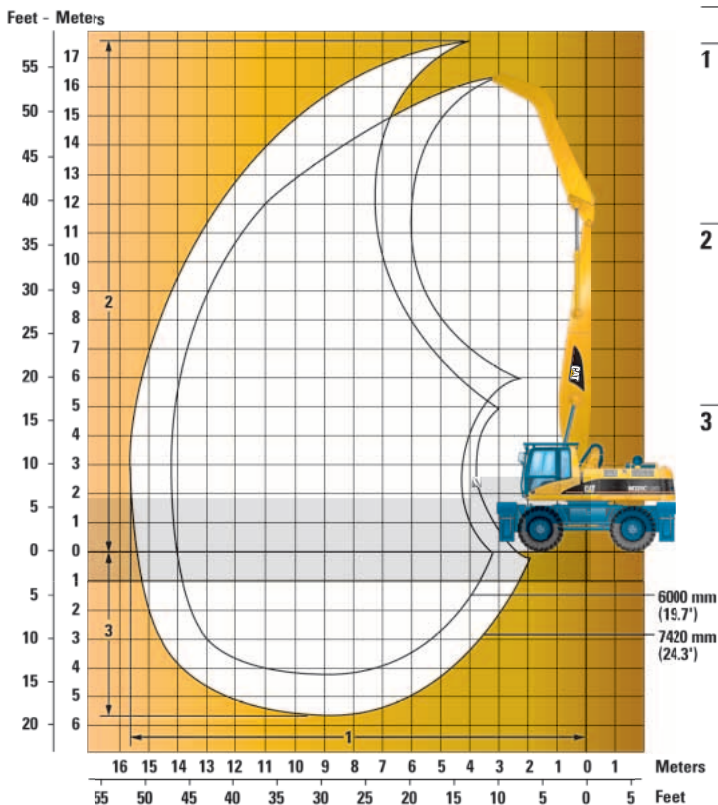
Over/Under Heel Boom



Butt-N-Top



Two Piece MH



M325C LMH

1 Maximum reach	
Over/under	12 790 mm (42.0')
Butt-n-top	11 260 mm (37.0')
Two piece 6000 mm	14 330 mm (47.0')
7420 mm	15 650 mm (51.3')
2 Maximum height	
Over/under	15 380 mm (50.5')
Butt-n-top	13 850 mm (45.4')
Two piece 6000 mm	16 600 mm (54.5')
7420 mm	17 800 mm (58.4')
3 Maximum depth	
Over/under	4400 mm (14.4')
Butt-n-top	2870 mm (9.4')
Two piece 6000 mm	4100 mm (13.5')
7420 mm	5500 mm (18.0')

M325C LMH Wheel Material Handler – Millyard

M325C LMH – Lift Capacities – 4050 mm/13'3"

Over-Under Heel Boom

BOOM – 6800 mm

STICK – 4050 mm

MAXIMUM REACH/HEIGHT/DEPTH – 12 790 / 15 380 / 4400 mm

Metric Units/all weights are in kg

Hand icon	Undercarriage configuration	1.5 m		3.0 m		4.5 m		6.0 m		7.5 m		9.0 m		10.5 m		12.0 m		Hand icon		m	
		Up	Down	Up	Down	Up	Down	Up	Down	Up	Down	Up	Down	Up	Down	Up	Down	Up	Down		
	Stabilizers up Stabilizers down	*28 950	*28 950																*26 700 *18 380	*26 700 *18 380	2.05 3.32
	Stabilizers up Stabilizers down			*19 300	*19 300			*13 800 *13 440	*13 800 *13 440	*11 730 *11 370	9140 *11 370								*10 330 *9700	7990 *9700	6.39 6.83
	Stabilizers up Stabilizers down							*10 390 *10 260	9850 *10 260	*9170 *9170	8730 *9170	6610 *9170							6730 *7600	5010 *7600	8.50 8.79
	Stabilizers up Stabilizers down							*9820 *9770	*9820 *9770	*8800 *8750	6880 *8750	6440 *7950	4850 *7950						5160 *6590	3800 *6590	9.95 10.16
	Stabilizers up Stabilizers down							*9690 *9710	*9690 *9710	*8670 *8680	6930 *8680	6550 *7820	4960 *7820	4840 *7030	3580 *7030				4320 *6010	3140 *6010	11.00 11.15
	Stabilizers up Stabilizers down							*9960 *10 050	*9960 *10 050	*8810 *8860	6840 *8860	6510 *7880	4920 *7880	4890 *7000	3630 *7000				3820 *5650	2740 *5650	11.77 11.88
	Stabilizers up Stabilizers down							*10 420 *10 490	9640 *10 490	8730 *9250	6610 *9250	6380 *8050	4790 *8050	4830 *7030	3570 *7030	3720 *5930	2670 *5930	2670 *5930	3500 *5390	2490 *5390	12.31 12.38
	Stabilizers up Stabilizers down							*11 610 *11 800	9070 *11 800	8370 *9750	6280 *9750	6170 *8260	4590 *8260	4720 *7060	3470 *7060	3690 *5860	2650 *5860	2650 *5860	3320 *4850	2350 *4850	12.64 12.68
	Stabilizers up Stabilizers down							11 370 *12 760	8360 *12 760	7950 *10 180	5880 *10 180	5920 *8410	4360 *8410	4580 *7020	3330 *7020	3630 *5640	2590 *5640	2590 *5640	3230 *4290	2280 *4290	12.79 12.80
	Stabilizers up Stabilizers down							10 610 *13 240	7660 *13 240	7530 *10 330	5490 *10 330	5680 *8350	4130 *8350	4440 *6790	3200 *6790	3570 *5200	2530 *5200	2530 *5200	3240 *3670	2280 *3670	12.76 12.73
	Stabilizers up Stabilizers down							10 030 *12 910	7130 *12 910	7190 *10 010	5170 *10 010	5480 *7960	3940 *7960	4330 *6260	3090 *6260	3530 *4340	2490 *4340	2490 *4340	3070 *2940	2350 *2940	12.55 12.49
	Stabilizers up Stabilizers down					*8230 *8530	*8230 *8530	9690 *11 640	6820 *11 640	6970 *9060	4970 *9060	5350 *7070	3810 *7070	4270 *5260	3030 *5260	*2910	2520				
	Stabilizers up Stabilizers down			*5020	*5020	*10 470 *10 960	10 260 *10 960	9570 *9410	6720 *9410	6890 *7360	4890 *7360	5300 *5520	3770 *5520	*3870 *3480	3040 *3480						
	Stabilizers up Stabilizers down							*6810	6780	*5270	4940										

BOOM – 22'4"

STICK – 13'3"

MAXIMUM REACH/HEIGHT/DEPTH – 42'0" / 50'6" / 14'5"

English Units/all weights are in lbs

Hand icon	Undercarriage configuration	5.0 ft		10.0 ft		15.0 ft		20.0 ft		25.0 ft		30.0 ft		35.0 ft		40.0 ft		Hand icon		ft	
		Up	Down	Up	Down	Up	Down	Up	Down	Up	Down	Up	Down	Up	Down	Up	Down	Up	Down		
	Stabilizers up Stabilizers down	*62,090	*62,090																*56,320 *56,320	*56,320 *56,320	7.12
	Stabilizers up Stabilizers down					*30,870 *29,980	*30,870 *29,980			*25,530 *25,530									*24,170 *22,510	19,520 *22,510	19.65 21.23
	Stabilizers up Stabilizers down								*22,970 *22,650	21,020 *22,650	18,520 *20,240	13,990 *20,240							15,500 *17,160	11,560 *17,160	27.17 28.15
	Stabilizers up Stabilizers down								*21,570 *21,440	*21,570 *21,440	19,280 *19,200	14,700 *19,200	13,700 *17,430	10,290 *17,430					11,650 *14,720	8600 *14,720	32.19 32.87
	Stabilizers up Stabilizers down								*21,180 *21,210	*21,180 *21,210	*18,950 *18,950	14,860 *18,950	14,010 *17,070	10,590 *15,290	10,270 15,290	7550 15,290			9660 *13,340	7040 *13,340	35.79 36.32
	Stabilizers up Stabilizers down								*21,710 *21,880	*21,520 *21,880	*19,200 *19,300	14,680 *19,300	13,970 *17,150	10,540 *17,150	10,450 *15,210	7730 15,210			8480 *12,520	6100 *12,520	38.45 38.81
	Stabilizers up Stabilizers down								*23,110 *23,420	20,760 *23,420	18,770 *20,100	14,220 *20,100	13,690 *17,490	10,280 *17,490	10,360 *15,250	7640 *12,590	7900 *12,590	5650 *11,950	7760 *11,950	5530 *11,950	40.29 40.52
	Stabilizers up Stabilizers down								*25,180 *25,560	19,550 *25,560	18,020 *21,140	13,520 *17,930	13,260 *17,930	9870 *15,290	10,130 *15,290	7420 *12,490	7890 *12,490	5640 *10,750	7330 *10,750	5180 *10,750	41.44 41.57
	Stabilizers up Stabilizers down								24,480 *27,630	18,030 *27,630	17,120 *22,060	12,670 *22,060	12,740 *18,210	9380 *15,150	9840 *15,150	7140 *11,990	7780 *11,990	5530 *9500	7130 *9500	5020 *9500	41.96 41.96
	Stabilizers up Stabilizers down								22,840 *28,680	16,530 *28,680	16,220 *22,380	11,830 *22,380	12,220 *18,060	8880 *18,060	9550 *14,620	6860 *14,620	7660 *10,910	5420 *10,910	7130 *8110	5020 *8110	41.86 41.80
	Stabilizers up Stabilizers down								21,590 *27,960	15,370 *27,960	15,490 *21,660	11,140 *21,660	11,790 *17,160	8470 *17,160	9320 *13,390	6640 *13,390	7600 *8730	5380 8730	*6770 *6470	5170 *6470	41.17 40.98
	Stabilizers up Stabilizers down					*19,260 *19,920	*19,260 *19,920	20,860 *25,170	14,700 *25,170	15,020 *19,550	10,700 *19,550	11,510 *15,160	8210 *15,160	9190 *11,070	6520 11,070						
	Stabilizers up Stabilizers down			*11,490	*11,490	*24,250 *25,350	22,080 *25,350	20,610 *20,240	14,470 *20,240	14,840 *15,740	10,540 *15,740	11,430 *11,650	8130 *11,650	*7770	6580						
	Stabilizers up Stabilizers down							*14,430	*14,430	*11,020	10,650										

* Rated by hydraulic capacity rather than stability capacity. Rated loads do not exceed 87% of hydraulic lifting capacity or 75% of tipping capacity.

M325C LMH Wheel Material Handler – Millyard

M325C LMH – Lift Capacities – 4350 mm/14'3"

Butt-n-Top Boom

BOOM – 6800 mm

STICK – 4350 mm

MAXIMUM REACH/HEIGHT/DEPTH – 11 260 / 13 850 / 2870 mm

Metric Units/all weights are in kg

Hand icon	Undercarriage configuration	1.5 m		3.0 m		4.5 m		6.0 m		7.5 m		9.0 m		10.5 m		Hand icon		m		
		Hand icon	Hand icon	Hand icon	Hand icon	Hand icon	Hand icon	Hand icon	Hand icon	Hand icon	Hand icon	Hand icon	Hand icon	Hand icon	Hand icon	Hand icon	Hand icon			
13.5 m	Stabilizers up Stabilizers down	*34 140	*34 140														*33 220 *22 890	*33 220 *22 890	1.73 3.01	
12.0 m	Stabilizers up Stabilizers down			*22 920	*22 910													12 410 *12 590	9330 *12 590	5.92 6.33
10.5 m	Stabilizers up Stabilizers down					*15 330 *15 030	14 970 *15 030	*12 820	*12 820									*14 140 *10 110	7970 *10 110	6060 8.13
9.0 m	Stabilizers up Stabilizers down					*13 900 *13 940	*13 900 *13 940	*11 760 *11 780	9840 *11 780	8950 *10 290	6870 *10 290	6540 *9110	4980 *9110					6280 *8810	4770 *8810	9.17 9.35
7.5 m	Stabilizers up Stabilizers down					*14 460 *14 640	*14 460 *14 640	*12 040 *12 120	9710 *12 120	8910 *10 400	6830 *10 400	6630 *9060	5070 *9060					5410 *7920	4090 *7920	10.08 10.21
6.0 m	Stabilizers up Stabilizers down					*15 120 *15 420	14 710 *15 420	12 420 *12 830	9390 *12 830	8740 *10 700	6670 *10 700	6560 *9120	5010 *9120	5090 *7650	3850 *7650			4910 *7180	3700 *7180	10.70 10.79
4.5 m	Stabilizers up Stabilizers down							11 910 *13 640	8920 *13 640	8470 *11 020	6420 *11 020	6430 *9180	4880 *9180	5060 *7560	3830 *7560			4630 *6500	3480 *6500	11.09 11.13
3.0 m	Stabilizers up Stabilizers down							11 330 *14 140	8390 *14 140	8180 *11 150	6140 *11 150	6270 *9080	4730 *9080	5000 *7270	3770 *7270			4500 *5790	3380 *5790	11.26 11.26
1.5 m	Stabilizers up Stabilizers down							10 860 *13 860	7960 *13 860	7920 *10 860	5900 *10 860	6130 *8670	4600 *8670	4940 *6630	3710 *6630			4520 *4980	3390 *4980	11.22 11.19
0.0 m	Stabilizers up Stabilizers down							10 580 *12 600	7700 *12 600	7740 *9930	5740 *9930	6040 *7760	4510 *7760	4920 *5390	3690 *5390			*4200 *4010	3500 *4010	10.98 10.92
-1.5 m	Stabilizers up Stabilizers down					*9700 *10 330	*9700 *10 330	10 490 *10 340	7620 *10 340	7670 *8230	5670 *8230	6010 *6140	4490 *6140							
-3.0 m	Stabilizers up Stabilizers down							*7720	7680	*6110	5720									

BOOM – 22'4"

STICK – 14'3"

MAXIMUM REACH/HEIGHT/DEPTH – 37'0" / 45'5" / 9'5"

English Units/all weights are in lbs

Hand icon	Undercarriage configuration	5.0 ft		10.0 ft		15.0 ft		20.0 ft		25.0 ft		30.0 ft		35.0 ft		Hand icon		ft		
		Hand icon	Hand icon	Hand icon	Hand icon	Hand icon	Hand icon	Hand icon	Hand icon	Hand icon	Hand icon	Hand icon	Hand icon	Hand icon	Hand icon	Hand icon	Hand icon			
45.0 ft	Stabilizers up Stabilizers down	*71,010	*71,010														*66,580 *28,920	*66,580 *28,920	6.59 19.78	
40.0 ft	Stabilizers up Stabilizers down					*34,070 *33,290	31,880 *33,290											29,970 *28,920	22,430 *28,920	18.34 19.78
35.0 ft	Stabilizers up Stabilizers down					*31,060 *30,800	31,060 *30,800	*26,340 *26,120	*20,880 *26,120	18,570 *23,170	14,140 *23,170							*22,710 *19,660	*22,710 *19,660	25.23 30.35
30.0 ft	Stabilizers up Stabilizers down					*30,340 *30,400	30,340 *30,400	*25,690 *25,710	*21,160 *25,710	19,210 *22,460	14,750 *22,460	*19,860 *19,860						14,100 *19,660	10,720 *19,660	29.76 30.35
25.0 ft	Stabilizers up Stabilizers down					*31,410 *31,770	31,410 *31,770	*26,180 *26,340	*20,920 *26,340	19,170 *22,620	14,700 *22,620	14,220 *19,710	10,870 *19,710					12,030 *17,590	9110 *17,590	32.87 33.30
20.0 ft	Stabilizers up Stabilizers down					*33,740 *34,330	31,720 *34,330	26,760 *27,800	20,260 *27,800	18,820 *23,210	14,370 *23,210	10,770 *19,800	10,770 *19,800	10,880 *16,340	8210 *16,340			10,870 *15,940	8200 *15,940	35.01 35.30
15.0 ft	Stabilizers up Stabilizers down							25,670 *29,540	19,260 *29,540	18,260 *23,900	13,850 *23,900	13,850 *19,890	10,520 *19,890	10,890 *16,230	8220 *16,230			10,220 *14,400	7690 *14,400	36.32 36.48
10.0 ft	Stabilizers up Stabilizers down							24,440 *30,640	18,140 *30,640	17,630 *24,190	13,260 *24,190	13,520 *19,640	10,210 *19,640	10,770 *15,540	8110 *15,540			9940 *12,810	7460 *12,810	36.91 36.94
5.0 ft	Stabilizers up Stabilizers down							23,420 *30,070	17,190 *30,070	17,070 *23,520	12,740 *23,520	13,230 *18,720	9920 *18,720	10,660 *14,040	8000 *14,040			9950 *11,020	7470 *11,020	36.81 36.75
0.0 ft	Stabilizers up Stabilizers down							22,800 *16,910	16,620 *16,910	16,700 *27,340	12,390 *27,340	13,030 *21,470	9740 *21,470	10,630 *16,670	7970 *10,980			*9250 *8840	7720 *8840	36.02 35.83
-5.0 ft	Stabilizers up Stabilizers down					*22,540 *23,940	22,540 *23,940	22,590 *22,400	*16,430 *22,400	16,550 *17,700	12,250 *17,700	12,990 *12,960	9700							
-10.0 ft	Stabilizers up Stabilizers down							*16,570	16,570	*12,930	*12,360									

* Rated by hydraulic capacity rather than stability capacity. Rated loads do not exceed 87% of hydraulic lifting capacity or 75% of tipping capacity.

M325C LMH Wheel Material Handler – Millyard

M325C LMH – Lift Capacities – 6000 mm/19'8"

Two Piece MH Boom

BOOM – 8850 mm

STICK – 6000 mm

MAXIMUM REACH/HEIGHT/DEPTH – 14 330 / 16 600 / 4100 mm

Metric Units/all weights are in kg

Hand icon	Undercarriage configuration	3.0 m		4.5 m		6.0 m		7.5 m		9.0 m		10.5 m		12.0 m		13.5 m		Hand icon		m			
		Upright	Down	Upright	Down	Upright	Down	Upright	Down	Upright	Down	Upright	Down	Upright	Down	Upright	Down	Upright	Down				
	16.5 m Stabilizers up Stabilizers down																		*7910	*7910	3.69		
	15.0 m Stabilizers up Stabilizers down					*7120	*7120												*5930	*5930	6.87		
	13.5 m Stabilizers up Stabilizers down					*8460	*8460	*7300	*7300	*5330	*5330							*5110	*5110	*5930	*5930	7.33	
	12.0 m Stabilizers up Stabilizers down					*8460	*8460	*7300	*7300	*5330	*5330							*5110	*5110	*5930	*5930	9.12	
	10.5 m Stabilizers up Stabilizers down					*9160	*9160	*8440	*8440	*7460	*7460	*5120	4210					*4700	*4700	4430	3380	11.87	
	9.0 m Stabilizers up Stabilizers down					*9260	*9260	*8570	*8570	*7470	*7470	*5520	*5520					*4650	*4650	*4460	*4460	10.92	
	7.5 m Stabilizers up Stabilizers down					*9760	*9760	*8570	*8570	*7440	*7440	*5550	*5550	4260				4430	3380	*4460	*4460	11.87	
	6.0 m Stabilizers up Stabilizers down					*9800	*9800	*8590	*8590	*7690	*7690	*6980	*6980	*4580	*4580			*4460	*4460			12.05	
	4.5 m Stabilizers up Stabilizers down					*10 080	*10 080	*8760	*8760	*7310	*7310	*5470	*5470	4230	4370	3330		3900	2950			12.77	
	3.0 m Stabilizers up Stabilizers down					*10 170	*10 170	*8810	*8810	*7810	*7810	*7010	*7010	*6340	*6340			*4360	*4360			12.90	
	1.5 m Stabilizers up Stabilizers down					*11 340	*11 340	*9130	*9130	*7070	*7070	*6880	*6880	5310	5390	4140	4320	3290				13.43	
	0.0 m Stabilizers up Stabilizers down					*11 720	*11 720	*9210	*9210	*7200	*7200	*8030	*8030	*7120	*7120	*6370	*6370	*4420	*4420			13.53	
	-1.5 m Stabilizers up Stabilizers down	*13 110	*13 110	*14 790	*14 790	*11 610	*11 610	8790	8790	6730	6730	6650	5100	5240	4000	4240	3210	3490	2610	3310	2460	13.91	
	-3.0 m Stabilizers up Stabilizers down	*15 300	*15 300	*15 140	*15 140	*11 780	*11 780	*9720	*9720	*8310	*8310	*7260	*7260	*6410	*6410	*5630	*5630	5480	5480	*4370	*4370	13.97	
	15.0 m Stabilizers up Stabilizers down			*16 850	*16 850	13 160	13 160	8690	8690	8350	8350	6310	6380	4840	5070	3840	4140	3110	3430	2550	3160	2330	14.20
	13.5 m Stabilizers up Stabilizers down			*17 170	*17 170	*12 760	*12 760	*10 230	*10 230	*8570	*8570	*7370	*7370	*6420	*6420	*5570	*5570	5420	5420	*4470	*4470	14.24	
	12.0 m Stabilizers up Stabilizers down			*8750	*8750	10 830	10 830	7940	7940	7890	7890	5890	6100	4580	4890	3670	4020	3000	3370	2490	3070	2260	14.33
	10.5 m Stabilizers up Stabilizers down			*7280	*7280	*13 400	*13 400	*10 570	*10 570	*8730	*8730	*7410	*7410	*6370	*6370	*5430	*5430	5350	*4620	*4620		14.34	
	9.0 m Stabilizers up Stabilizers down			*4760	*4760	10 180	10 180	7340	7340	7500	7500	5520	5850	4340	4730	3510	3920	2900	3310	2330	3040	2230	14.31
	7.5 m Stabilizers up Stabilizers down			*4630	*4630	*13 370	*13 370	*10 580	*10 580	*8690	*8690	*7310	*7310	*6200	*6200	*5180	*5180	*4550	*4550			14.29	
	6.0 m Stabilizers up Stabilizers down			*4670	*4670	9780	9780	6980	6980	7220	7220	5250	5660	4150	4600	3390	3840	2820	3260	2390	3070	2250	14.12
	4.5 m Stabilizers up Stabilizers down			*4760	*4760	*10 380	*10 380	*10 170	*10 170	*8370	*8370	*7000	*7000	*5860	*5860	*4740	*4740	*4220	*4220			14.07	
	3.0 m Stabilizers up Stabilizers down			*5370	*5370	9600	9600	6810	6810	7050	7050	5100	5530	4030	4510	3300	3780	2770	3250	2370	3170	2320	13.76
	1.5 m Stabilizers up Stabilizers down			*5530	*5530	*9760	*9760	*9300	*9300	*7730	*7730	*7730	*7730	*6430	*6430	*5280	*5280	*4000	*4000			13.68	
	0.0 m Stabilizers up Stabilizers down					9570	9570	6780	6780	6990	6990	5040	5480	3980	4480	3270	3770	2760					
	-1.5 m Stabilizers up Stabilizers down					*9340	*9340	*7990	*7990	*6710	*6710	*5540	*5540	*4360	*4360								

BOOM – 29'0"

STICK – 19'8"

MAXIMUM REACH/HEIGHT/DEPTH – 47'0" / 54'6" / 13'6"

English Units/all weights are in lbs

Hand icon	Undercarriage configuration	10.0 ft		15.0 ft		20.0 ft		25.0 ft		30.0 ft		35.0 ft		40.0 ft		45.0 ft		Hand icon		ft			
		Upright	Down	Upright	Down	Upright	Down	Upright	Down	Upright	Down	Upright	Down	Upright	Down	Upright	Down	Upright	Down				
	55.0 ft Stabilizers up Stabilizers down																						
	50.0 ft Stabilizers up Stabilizers down			*18,280	*18,280	*14,550	*14,550											*13,550	*13,550			21.00	
	45.0 ft Stabilizers up Stabilizers down			*18,770	*18,770	*15,520	*15,520											*13,030	*13,030			22.67	
	40.0 ft Stabilizers up Stabilizers down					*18,210	*18,210	*15,320	*15,320	*11,340	*11,340							*11,440	*11,440			29.04	
	35.0 ft Stabilizers up Stabilizers down					*18,560	*18,560	*15,930	*15,930	*11,340	*11,340							*11,220	*11,220			30.09	
	30.0 ft Stabilizers up Stabilizers down					*19,940	*19,940	*18,160	*18,160	*15,210	*15,210	11,850						*10,450	*10,450	9200		34.51	
	25.0 ft Stabilizers up Stabilizers down					*20,180	*20,180	*18,540	*18,540	*15,770	*15,770	*10,770	*10,770					*10,340	*10,340			35.30	
	20.0 ft Stabilizers up Stabilizers down					*21,300	*21,300	*18,710	*18,710	*16,020	*16,020	15,310	11,920	11,830	9130			*9920	*9920	7590		38.58	
	15.0 ft Stabilizers up Stabilizers down					*21,360	*21,360	*18,740	*18,740	*16,790	*16,790	*14,990	*14,990					*9860	*9860			39.17	
	10.0 ft Stabilizers up Stabilizers down					*21,910	*21,910	*19,070	*19,070	15,760	15,760	11,770	11,790	9090	9360	7130		8690	6580			41.63	
	5.0 ft Stabilizers up Stabilizers down					*22,080	*22,080	*19,170	*19,170	*17,000	*17,000	*15,280	*15,280	*12,910	*12,910			*9620	*9620			42.09	
	0.0 ft Stabilizers up Stabilizers down					*24,800	*24,800	*23,220	*23,220	21,570	19,750	15,260	14,820	11,450	11,590	8900	9290	7060		7870	5910	43.93	
	-5.0 ft Stabilizers up Stabilizers down					*25,570	*25,570	*23,510	*23,510	*20,000	*20,000	*17,440	*17,440	*15,480	*15,480	*13,830	*13,830			*9560	*9560	44.26	
	-10.0 ft Stabilizers up Stabilizers down					*27,950	*27,950	*25,120	*25,120	20,350	18,970	14,530	14,340	11,000	11,300	8620	9130	6900	7480	5580	7320	5450	45.54
	15.0 ft Stabilizers up Stabilizers down			*31,890	*31,890	*32,650	*32,650	*25,490	*25,490	*21,070	*21,070	*18,030	*18,030	*15,750	*15,750	*13,900	*13,900	*11,220	*11,220			45.77	
	10.0 ft Stabilizers up Stabilizers down					*36,330	*36,330	28,510	18,800	18,020	13,650	13,770	10,450	10,930	8270	8910	6690	7380	5480	6970	5150	46.56	
	5.0 ft Stabilizers up Stabilizers down					*37,030	*37,030	*27,590	*27,590	*22,160	*22,160	*18,590	*18,590	*15,990	*15,990	*13,910	*13,910	*12,000	*12,000	11,670	9830	9830	46.69
	0.0 ft Stabilizers up Stabilizers down					*21,830	*21,830	23,380	17,180	17,050	12,730	13,170	9880	10,560	7910	8670	6460	7250	5350	6770	4980	47.01	
	-5.0 ft Stabilizers up Stabilizers down					*17,890	*17,890	*29,010	*29,010	*22,910	*22,910	*18,920	*18,920	*16,060	*16,060	*13,780	*13,780	*11,680	*11,680	11,530	*10,180	*10,180	47.05
	15.0 ft Stabilizers up Stabilizers down					*11,170	*11,170	21,970	15,880	16,190	11,930	12,630	9370	10,210	7570	8450	6250	7120	5240	6700	4910	46.95	
	10.0 ft Stabilizers up Stabilizers down					*10,800	*10,800	*29,020	*29,020	*22,940	*22,940	*18,830	*18,830	*15,820	*15,820	*13,380	*13,380	*11,080	*11,080			46.88	
	5.0 ft Stabilizers up Stabilizers down					*10,700	*10,690	21,090	15,080	15,570	11,340	12,210	8970	9920	7300	8270	6080	7040	5150	6770	4950	46.33	
	0.0 ft Stabilizers up Stabilizers down					*10,870	*10,870	*24,200	*24,200	*22,050	*22,050	*18,140	*18,140	*15,130	*15,130	*12,600	*12,600	*10,030	*10,030			46.16	
	-5.0 ft Stabilizers up Stabilizers down					*12,180	*12,190	20,690	14,700	15,210	11,000	11,940	8710	9740	7120	8170	5970	7020	5130	6990	5110	45.14	
	-10.0 ft Stabilizers up Stabilizers down					*12,510	*12,510	*22,450	*22,450	*20,160	*20,160	*16,710	*16,710	*13,860	*13,860	*11,280	*11,280			*8360	*8360	44.88	

* Rated by hydraulic capacity rather than stability capacity. Rated loads do not exceed 87% of hydraulic lifting capacity or 75% of tipping capacity.

M325C LMH Wheel Material Handler – Millyard

M325C LMH – Lift Capacities – 7420 mm/24'4"

Two Piece MH Boom

BOOM – 8850 mm

STICK – 7420 mm

MAXIMUM REACH/HEIGHT/DEPTH – 15 650 / 17 800 / 5500 mm

Metric Units/all weights are in kg

Hand icon	Undercarriage configuration	3.0 m		4.5 m		6.0 m		7.5 m		9.0 m		10.5 m		12.0 m		13.5 m		15.0 m		Hand icon		m		
		Upright	Down	Upright	Down	Upright	Down	Upright	Down	Upright	Down	Upright	Down	Upright	Down	Upright	Down	Upright	Down	Upright	Down			
	16.5 m Stabilizers up Stabilizers down					*5940	*5940														*5030	*5030	6.86 7.37	
	15.0 m Stabilizers up Stabilizers down							*6030	*6030	*4660	*4660											*4200	*4200	9.36 9.70
	13.5 m Stabilizers up Stabilizers down							*6780	*6780	*5940	*5750	*4620	4360									*3790	*3790	11.11 11.36
	12.0 m Stabilizers up Stabilizers down							*7240	*7240	*6680	5830	5720	4450	*4230	3440							*3560	3190	12.43 12.63
	10.5 m Stabilizers up Stabilizers down							*7620	*7620	*6960	5810	5730	4460	4530	3480							*3420	2740	13.46 13.61
	9.0 m Stabilizers up Stabilizers down							*7810	7710	*7070	5720	5670	4400	4500	3460	3630	2740					*3260	2430	14.25 14.37
	7.5 m Stabilizers up Stabilizers down							*8190	7470	7150	5560	5290	4430	4380	3380	3590	2700					2990	2210	14.85 14.94
	6.0 m Stabilizers up Stabilizers down							*8950	*8950	*8730	7110	6900	5320	5380	4130	4320	3280	3530	2640	2910	2140	2810	2050	15.28 15.33
	4.5 m Stabilizers up Stabilizers down			*13 160	*13 160	*11 330	9350	8730	6660	6590	5030	5180	3930	4190	3150	3440	2560	2870	2090	2680	1950	2680	1950	15.55 15.58
	3.0 m Stabilizers up Stabilizers down			*16 700	12 860	11 440	8480	8200	6160	6260	4710	4960	3720	4040	3010	3350	2470	2810	2040	2610	1880	2610	1880	15.67 15.67
	1.5 m Stabilizers up Stabilizers down			*9780	*9780	10 560	7680	7680	5680	5930	4400	4750	3520	3900	2870	3250	2380	2760	1990	2580	1850	2580	1850	15.64 15.62
	0.0 m Stabilizers up Stabilizers down	*2580	*2580	*6030	*6030	9900	7070	7270	5290	5660	4140	4560	3340	3770	2750	3170	2300	2710	1940	2590	1850	2590	1850	15.47 15.43
	-1.5 m Stabilizers up Stabilizers down	*3250	*3250	*5640	*5640	9500	6700	6980	5010	5450	3950	4420	3200	3670	2660	3110	2240	2690	1920	2650	1900	2650	1900	15.15 15.08
	-3.0 m Stabilizers up Stabilizers down	*3380	*3380	*5950	*5950	9300	6530	6810	4860	5320	3820	4320	3110	3610	2600	3080	2210				2770	1990	14.66 14.56	
	-4.5 m Stabilizers up Stabilizers down			*6040	*6040	*10 090	*10 090	9000	*9000	*7450	*7450	*6200	*6200	*5120	*5120	*4060	*4060					*3130	*3130	14.56

BOOM – 29'0"

STICK – 24'4"

MAXIMUM REACH/HEIGHT/DEPTH – 51'4" / 58'5" / 18'0"

English Units/all weights are in lbs

Hand icon	Undercarriage configuration	10.0 ft		15.0 ft		20.0 ft		25.0 ft		30.0 ft		35.0 ft		40.0 ft		45.0 ft		50.0 ft		Hand icon		ft		
		Upright	Down	Upright	Down	Upright	Down	Upright	Down	Upright	Down	Upright	Down	Upright	Down	Upright	Down	Upright	Down	Upright	Down			
	55.0 ft Stabilizers up Stabilizers down					*12,090	*12,090														*11,640	*11,640	20.57 22.47	
	50.0 ft Stabilizers up Stabilizers down					*14,960	*14,960	*12,680	*12,680	*9950	*9950											*9460	*9460	29.59 30.77
	45.0 ft Stabilizers up Stabilizers down							*14,630	*14,630	*12,570	12,290	*9170	*9170									*8460	*8460	35.73 36.58
	40.0 ft Stabilizers up Stabilizers down							*15,760	*15,760	*14,370	12,500	*12,130	9510	*8230	7300							*7900	7190	40.29 40.94
	35.0 ft Stabilizers up Stabilizers down							*16,660	*16,660	*15,190	12,490	12,290	9560	9690	7430							*7570	6130	43.80 44.32
	30.0 ft Stabilizers up Stabilizers down							*17,020	16,600	*15,420	12,310	12,180	9450	9660	7400	7750	5830					7250	5410	46.52 46.92
	25.0 ft Stabilizers up Stabilizers down							*17,810	16,100	*15,390	11,970	11,940	9220	9510	7260	7700	5780					6640	4900	48.59 48.88
	20.0 ft Stabilizers up Stabilizers down							*21,750	*21,750	*18,940	15,350	14,860	11,470	11,590	8880	9290	7040	7570	5660	6230	4550	6210	4550	50.03 50.23
	15.0 ft Stabilizers up Stabilizers down	*21,680	*21,680	*28,230	*28,230	*24,520	20,210	18,840	14,380	14,210	10,840	11,160	8470	9010	6770	7400	5480	6140	4470	5930	4300	5930	4300	50.98 51.08
	10.0 ft Stabilizers up Stabilizers down			*36,080	27,820	24,680	18,340	17,680	13,300	13,490	10,160	10,690	8020	8700	6470	7200	5290	6030	4370	5750	4150	5750	4150	51.41 51.41
	5.0 ft Stabilizers up Stabilizers down			*23,420	*23,420	22,780	16,590	16,580	12,260	12,800	9500	10,240	7590	8390	6180	7000	5100	5930	4260	5680	4080	5680	4080	51.31 51.25
	0.0 ft Stabilizers up Stabilizers down	*5805	*5805	*13,870	*13,870	21,350	15,280	15,670	11,420	12,200	8930	9830	7200	8120	5920	6830	4940	5840	4180	5710	4080	5710	4080	50.75 50.62
	-5.0 ft Stabilizers up Stabilizers down	*7300	*7300	*12,800	*12,800	20,470	14,470	15,040	10,820	11,750	8510	9530	6900	7920	5720	6710	4820				5850	4180	49.67 49.44	
	-10.0 ft Stabilizers up Stabilizers down			*13,450	*13,450	20,040	14,080	14,680	10,480	11,470	8240	9330	6710	7790	5600	6660	4770				6130	4380	48.06	
	-15.0 ft Stabilizers up Stabilizers down					*19,960	*19,960	14,550	10,360	11,360	8140	9250	6640	7770	5570									

* Rated by hydraulic capacity rather than stability capacity. Rated loads do not exceed 87% of hydraulic lifting capacity or 75% of tipping capacity.