



ASSALONI.COM S.p.A. 40042 Lizzano in Belvedere (BO) - Italy - Via Luigi Assaloni, 4  
Tel. +39-0534 51353 - Fax +39-0534 51583 info@assaloni.com www.assaloni.com



MOD. LM - GB - Rev.2 04/11 The technical data are informative and not binding.



# LM SINGLE-SECTION SNOWPLOUGH

LM.28

LM.32

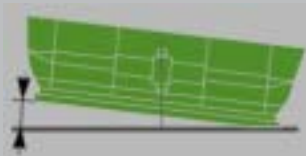
LM.35



[www.assaloni.com](http://www.assaloni.com)

## OSCILLATION

A central oscillation system (patented) allows the blade to follow the road profile.



## ROTATION

Rotation angle from +36° to -36°



# LM SINGLE-SECTION SNOWPLOUGH

LM.28

LM.32

LM.35

**Monolithic snow plough for medium snow, is equipped with hydraulic controls which enable right-left rotation and lifting-lowering operations. It is perfectly suitable for snow removal both in urban and extra-urban roads. Thanks to its extraordinary elasticity, equipped with springs shock-absorbing system, the operator maximum safety is garanted.**

## OBSTACLE SURPASSING SYSTEM



## LATERAL EDGES

Available on request, in plastic material, they are ideal for clearing near new-jersey barriers and help discharge of the snow.



## POLYURETHANE SCRAPING EDGE DEVICE

Available on request, two hydraulic pistons allow the polyurethane scraping edge insertion, to be used in alternative to the steel one.



## 3 POINTS COUPLING

For farm tractors.

## CENTRAL OSCILLATION SYSTEM - PATENTED -

It locks the blade in the horizontal position with blade raised and frees it completely to follow the road profile with blade lowered in working position. Thanks to this device the scraping edge wears evenly.

## SAFETY LOCKING DEVICES

In compliance with safety norms (CE mark).

## LED SIDE CLEARANCE LIGHTS

On request, they are resistant to vibrations and damp.

## RAPID ATTACHMENT PLATE TO VEHICLE

Available not only in the ASSALONI version (patented) but also in the DIN 76060 or SETRA version.

## SUPPORTING FEET

With mechanic height adjustment on the ground.

## AUXILIARY SPOTLIGHT KIT

Available on request, in compliance with current traffic regulations they back-up the vehicle lights and they are adjustable.

## BY-PASS VALVE

In the shock-absorbing system of the hydraulic rotation circuit it contributes in further absorbing impacts.

## RUBBER SPLASH GUARD

Installed on request, it limits snow splashes on the vehicle windscreen.

## SHEAR CURVATURE

The special profile perfectly discharges even large amounts of snow.

## STEEL SCRAPING EDGE

Available on request also in SELENE, KOMBI or RUBBER.

## SHOCK ABSORBING SYSTEM

The springs keep the shear aligned in working position. When pressed, they allow to surmount any obstacles possibly encountered and to adapt to uneven road surfaces.

## POLYURETHANE INSERT

On request, it is fitted between the steel scraping edge and the blade it offers the elimination of any vibrations and the rotations of scraping edge when obstacles are encountered with automatic return to the working position once these have been exceeded.

## SIDE BUMPERS

These prevent the blade from sticking into obstacles at the side of the road.

TECHNICAL DATA	LM.28	LM.32	LM.35	
Length of scraping edge	2800	3200	3500	mm
Working width (36° max. inclination)	2260	2580	2830	mm
Blade height	1000	1000	1000	mm
Minimum width for narrow passages	2390	2710	2980	mm
Number of blade scraping edges	1	1	1	no
Height of obstacle that can be surmounte	545	580	620	kg



## ELECTRO-HYDRAULIC CONTROL UNIT

This can be installed on request on the attachment panel of the actuator blade.

