

**EDGE** LINE  
RAISE YOUR GAME



USER-FRIENDLY ARTICULATED CRANES  
**HB Range MID-SIZE**



# RAISE YOUR GAME **HYVA PERFORMANCE**



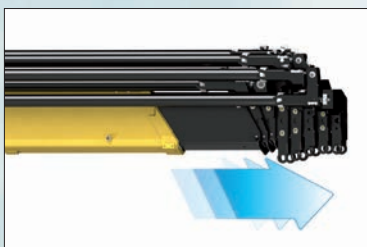
# TOP SOLUTIONS



## 1 TPP

- **Top protection painting** - Top quality treatment and paint on all crane components for higher value retention and durability by the use of cataphoresis painting process.
- Bolts and nuts protected by Geomet® treatment: 890% more resistance against corrosion.

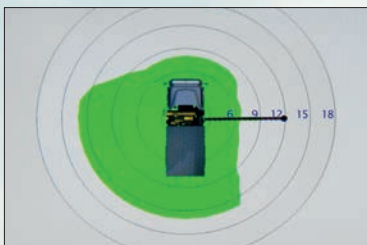
**Top quality protection for harsh environment**



## 2 EES

- **Extra Extension Speed** - The market is always demanding more speed, but also the highest possible safety. EES is our answer to this, through the use of a specially designed counterbalance valve: this system increases the extension speed without affecting the crane safety.

**Save time, precise work, increase efficiency**



## 3 DLD

- **Dynamic Load Diagram** - After the stabilization, operator can select the load to be lifted. Display shows the permitted crane outreach based on the stability and the load selected.

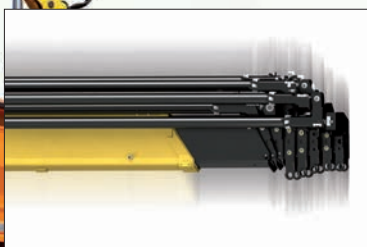
**Crane lifting capacity always under control in all stabilizer positions**



## 4 MT

- **Magic Touch** - System allows the driver to open the crane from folded position to working position and back to transporting position by pushing a single lever on radio transmitter (or a button on the display).

**Crane Automatic folding/unfolding**



## 5 SDS

- **Smooth Descent System** - uses a special counterbalance valve to reduce boom oscillation. The result for the user is an incredible precision in unloading operations.

**Control and precision of the movement**



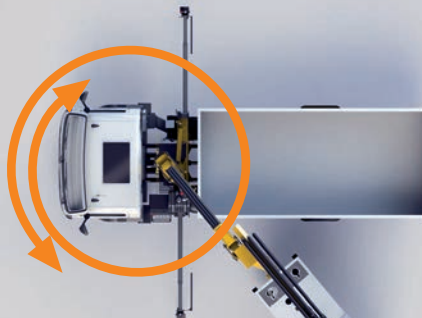
## TECHNICAL SOLUTIONS TO RAISE RELIABILITY AND SAFETY

### Safety first: always stable



- More than 40 stabilizer configurations to ensure safe positioning of the truck in all ground conditions.
- Assisted tiltable stabilizer is the smart solution equipped with gas spring, to provide effortless movement.

### 425° Slewing Angle



- The widest slewing angle for medium sized cranes.
- Top efficiency and easy to use.

### Electronics mind: guaranteed in all conditions



- All electrical components have IP69K enclosures which offer complete protection against water jet and dust penetration providing higher durability and less down time.

## Safety Performance Efficiency



### H3XL

With a 3" TFT display and ergonomic keyboards, the operator can supervise the crane working and select the best parameters for effective use. The system controls the stability with 2-step beam outreach monitoring and continuous slewing control.

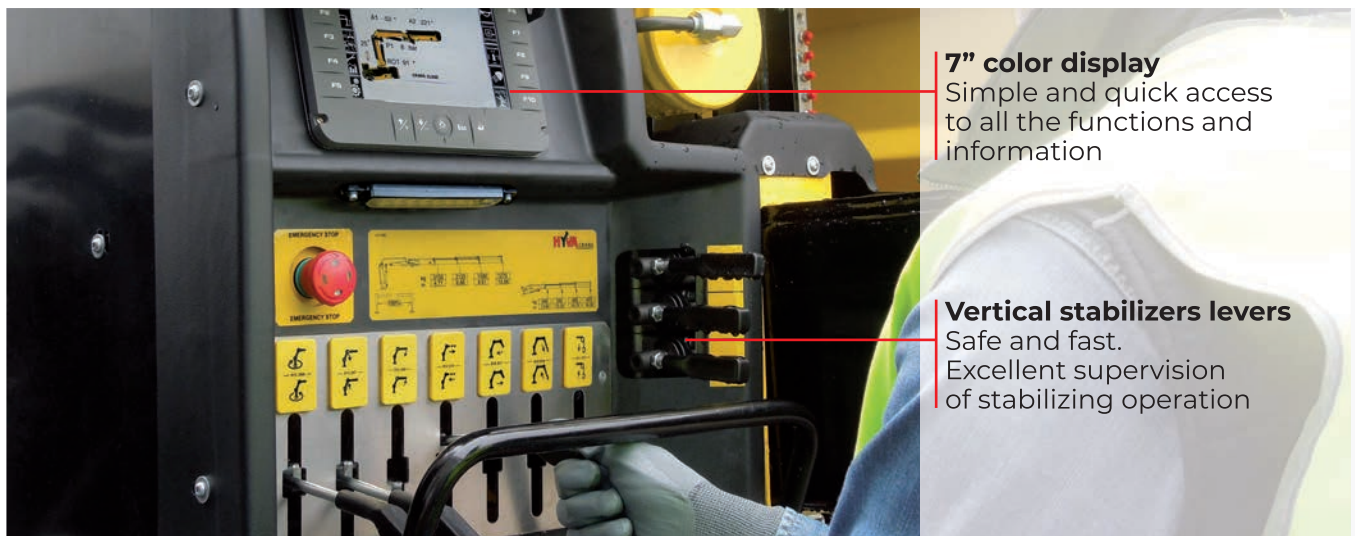


### H4XL

A 7" colour display with integrated keyboard gives the operator a higher level of awareness of the crane operation and allows selection of the best parameters for effective use. The system detects the exact position of the beams and proportionally calculates the stability.

## SMART AND **USER-FRIENDLY** CONTROLS

Control station distinguished by operator comfort and user-friendly interface derived from dedicated ergonomic and user preference studies



**7" color display**  
Simple and quick access to all the functions and information

**Vertical stabilizers levers**  
Safe and fast. Excellent supervision of stabilizing operation

## OUR INNOVATIONS ARE **CHANGING THE GAME**

Solutions that are the result of smart engineering

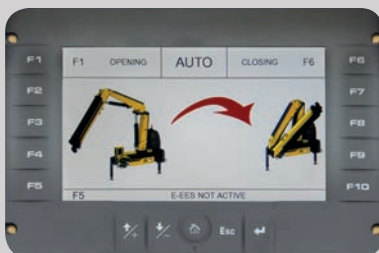
### **DLD** DYNAMIC LOAD DIAGRAM



This system, a first on truck-mounted articulated cranes, optimises stabilisation and makes crane operation safer and more efficient, allows the driver to verify in advance the crane lifting capacity based on the truck stability.

A display shows the outreach available for the load selected and the actual boom slewing position.

### **MT** MAGIC TOUCH



This easy-to-use function improves driver attention, promotes safe operation, saves time and can increase productivity.

A graphic display allows the driver, after truck stabilisation, to automatically fold the crane from any position to transport position and unfold to working position when required.

## Wide range Radio selection



Hetronic NOT CE



Hetronic CE Basic



Scanreco



Hetronic CE Graphic



distributor



Easy installation and smart calibration cranes combined with high level of service, makes Hyva the best partner for your business, all over the world



**ONE CRANE, MANY APPLICATIONS**

Thanks to the extensive range of accessories and attachments



Building



Construction



Energy



Environment



Gardening



Logistics



Maintenance



Mining



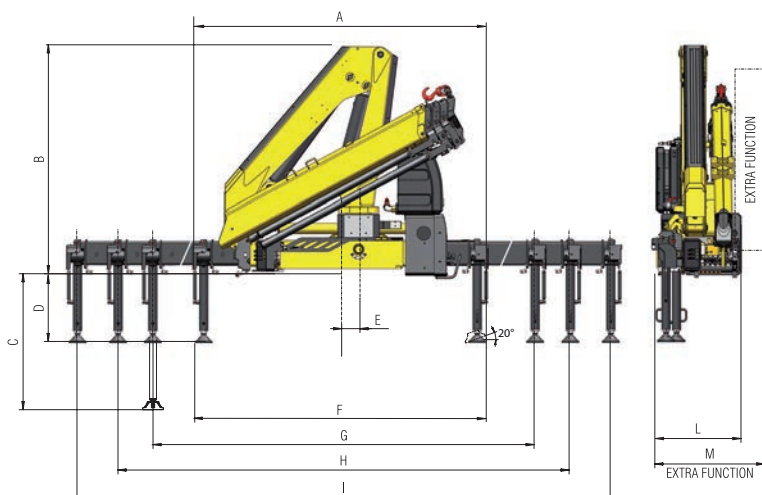
Oil&Gas



Rental

# TECHNICAL INFORMATION HB90 - HB112

## Dimensions (mm)



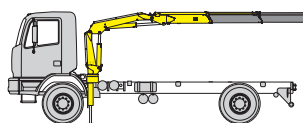
	E1		E2		E3		E4	
	90	112	90	112	90	112	90	112
A	2305	2310	2305	2310	2305	2310	2305	2310
B	2070	2095	2070	2095	2070	2095	2070	2095
C	1185	1327	1185	1327	1185	1327	1185	1327
D	585	635	585	635	585	635	585	635
E	160		160		160		160	
F	2270	2303	2270	2303	2270	2303	2270	2303
G	3290	3300	3290	3300	3290	3300	3290	3300
H	4790	4805	4790	4805	4790	4805	4790	4805
I	5755	5765	5755	5765	5755	5765	5755	5765
L	800		800		800		800	
M	850		850		850		850	

## Load diagrams

E1	kg		m		HB90	
		2130	1510	4,08	5,76	
E2	kg		m		HB90	
	2020	1415	4,08	5,76		
E3	kg		m		HB90	
	1920	1320	4,17	5,85		
E4	kg		m		HB90	
	1850	1230	4,24	5,92		

## Standard features

- Designed in accordance with EN12999**  
**Design class: HC1-HD4**
- Cross controls
  - Flanged valves
  - Oil tank
  - Manually extendable stabilizers
  - Fixed stabilizer cylinders
  - Swivel stabilizer foot
  - Centralized greasing system
  - EES Extra Extension Speed
  - SDS Smooth Descent System
  - H3XL Crane control system (CE)



**Recommended truck:**  
**HB90**  
**M.T.T. ton 8 - G.V.W. ton 8**  
**HB112**  
**M.T.T. ton 10 - G.V.W. ton 10**

## Technical specifications - EN12999 - HC1- HD4

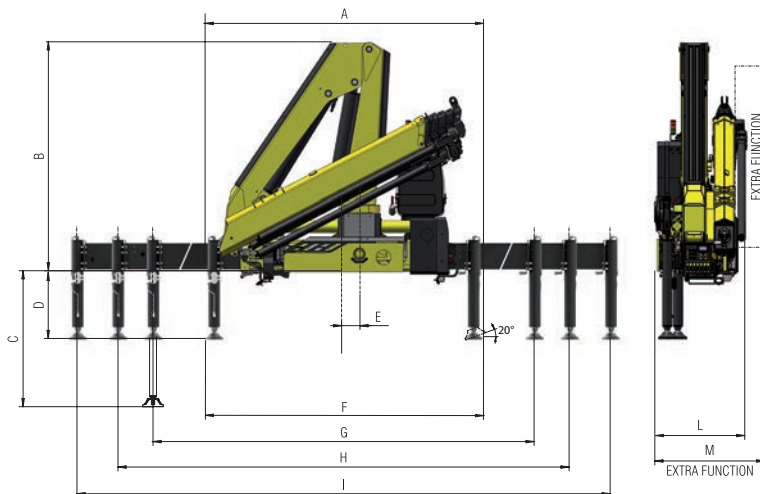
HB		E1		E2		E3		E4	
		90	112	90	112	90	112	90	112
Lifting Moment	<b>tm</b>	8,7	10,5	8,2	10,1	8,0	9,5	7,8	9,3
Slewing Angle	°	425		425		425		425	
Working pressure	<b>bar</b>	310	300	310	300	310	300	310	300
Oil tank capacity	<b>l</b>	75		75		75		75	
Max Oil flow	<b>l/min</b>	40		40		40		40	
Max lifting height	<b>m</b>	9,1	9,3	10,7	10,9	12,6		14,4	14,6
Standard crane weight	<b>kg</b>	1140	1215	1220	1320	1300	1420	1370	1510





# TECHNICAL INFORMATION HB130 - HB160

## Dimensions (mm)



	E1		E2		E3		E4		E5	
	130	160	130	160	130	160	130	160	130	160
A	2480	2490	2480	2490	2480	2490	2480	2490	2480	2490
B	2295		2295		2295		2295		2295	
C	1374	1355	1374	1355	1374	1355	1374	1355	1374	1355
D	627	618	627	618	627	618	627	618	627	618
E	160		160		160		160		160	
F	2445	2470	2445	2470	2445	2470	2445	2470	2445	2470
G	4200	4225	4200	4225	4200	4225	4200	4225	4200	4225
H	5400	5425	5400	5425	5400	5425	5400	5425	5400	5425
I	6600	6625	6600	6625	6600	6625	6600	6625	6600	6625
L	825		825		825		825		895 905	
M	930	940	930	940	930	940	930	940	975	985

## Load diagrams

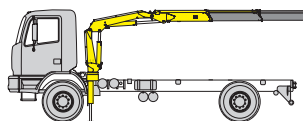
E1	kg		m		HB130		HB160	
		2740	1940	4,54	6,34			
E2 <td colspan="2">kg</td> <td colspan="2">m</td> <td colspan="2">HB130</td> <td colspan="2">HB160</td>	kg		m		HB130		HB160	
	2610	1810	4,54	6,34	1395	1010	755	560
E3 <td colspan="2">kg</td> <td colspan="2">m</td> <td colspan="2">HB130</td> <td colspan="2">HB160</td>	kg		m		HB130		HB160	
	2475	1690	4,62	6,42	1280	1015	755	560
E4 <td colspan="2">kg</td> <td colspan="2">m</td> <td colspan="2">HB130</td> <td colspan="2">HB160</td>	kg		m		HB130		HB160	
	2355	1585	4,71	6,51	1175	910	755	560
E5 <td colspan="2">kg</td> <td colspan="2">m</td> <td colspan="2">HB130</td> <td colspan="2">HB160</td>	kg		m		HB130		HB160	
	2245	1490	4,78	6,58	1085	825	665	560

## Standard features

Designed in accordance with EN12999

Design class: HC1-HD4

- Cross controls
- Load limit device
- Flanged valves
- Oil tank
- Manually extendable stabilizers
- Internal stabilizers pipes
- Fixed stabilizer cylinders
- Swivel stabilizer foot
- Centralized greasing system
- EES Extra Extension Speed
- SDS Smooth Descent System
- H3XL Crane control system (CE)



Recommended truck:  
**HB130**  
 M.T.T. ton 12 - G.V.W. ton 12  
**HB160**  
 M.T.T. ton 15 - G.V.W. ton 15

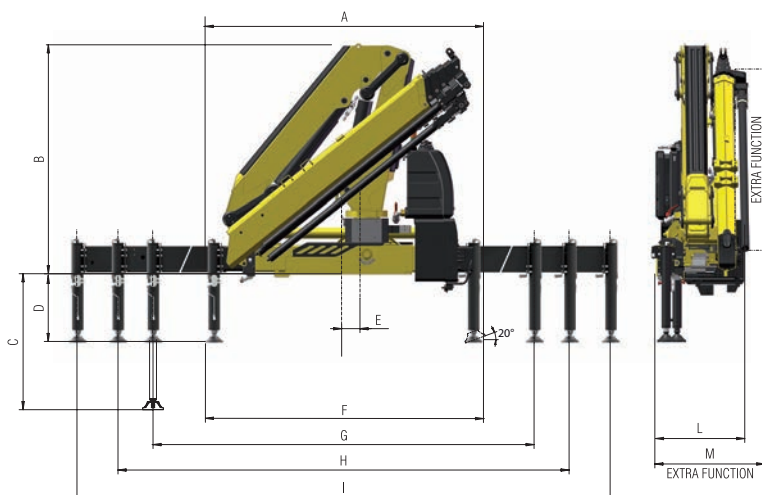
## Technical specifications - EN12999 - HC1- HD4

HB		E1		E2		E3		E4		E5	
		130	160	130	160	130	160	130	160	130	160
Lifting Moment	tm	12,4	15,8	11,8	15,0	11,4	14,6	11,1	14,2	10,7	13,7
Slewing Angle	°	425		425		425		425		425	
Working pressure	bar	285	280	285	280	285	280	285	280	285	280
Oil tank capacity	l	130		130		130		130		130	
Max Oil flow	l/min	60		60		60		60		60	
Max lifting height	m	10,0		11,7		13,7		15,7		17,8	
Standard crane weight	kg	1545	1775	1665	1910	1780	2025	1870	2130	1955	2220



# TECHNICAL INFORMATION HB210 - HB240

## Dimensions (mm)



	E2	E3	E4	E5
<b>A</b>	2500	2500	2500	2500
<b>B</b>	2300	2300	2300	2300
<b>C</b>	1348	1348	1348	1348
<b>D</b>	611	611	611	611
<b>E</b>	150	150	150	150
<b>F</b>	2520	2520	2520	2520
<b>G</b>	4860	4860	4860	4860
<b>H</b>	5500	5500	5500	5500
<b>I</b>	7420	7420	7420	7420
<b>L</b>	930	930	930	930
<b>M</b>	1050	1050	1050	1050

## Load diagrams

E2	HB210			HB240		
	kg	m	kg	m	kg	m
	4405	4,30	3000	6,20	2280	8,10
	5280	4,30	3610	6,20	2750	8,10

E3	HB210							HB240						
	kg	m	kg	m	kg	m	kg	m	kg	m	kg	m		
	4320	4,30	2970	6,20	2230	8,10	1700	10,13	1280	12,25	980	14,46	770	16,59
	5085	4,30	3425	6,20	2570	8,10	2035	10,13	1530	12,25	1170	14,46	770	16,59

E4	HB210								HB240							
	kg	m	kg	m	kg	m	kg	m	kg	m	kg	m	kg	m		
	4100	4,39	2830	6,29	2120	8,19	1625	10,22	1280	12,25	980	14,46	770	16,59	630	18,70
	4820	4,39	3215	6,29	2380	8,19	1880	10,22	1530	12,25	1170	14,46	915	16,59	735	18,70

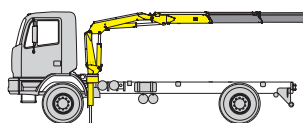
E5	HB210								HB240							
	kg	m	kg	m	kg	m	kg	m	kg	m	kg	m	kg	m		
	3940	4,47	2585	6,37	1880	8,27	1440	10,30	1165	12,33	980	14,46	770	16,59	630	18,70
	4585	4,47	3033	6,37	2220	8,27	1710	10,30	1390	12,33	1170	14,46	915	16,59	735	18,70

## Standard features

Designed in accordance with EN12999

Design class: HC1-HD4

- Cross controls
- Load limit device
- Flanged valves
- Oil tank
- Manually extendable stabilizers
- Internal stabilizers pipes
- Fixed stabilizer cylinders
- Swivel stabilizer foot
- Centralized greasing system
- EES Extra Extension Speed
- SDS Smooth Descent System
- H3XL Crane control system (CE)



**Recommended truck:**  
**HB210**  
 M.T.T. ton 17 - G.V.W. ton 17  
**HB240**  
 M.T.T. ton 19 - G.V.W. ton 19

## Technical specifications - EN12999 - HC1- HD4

HB		E2		E3		E4		E5	
		210	240	210	240	210	240	210	240
Lifting Moment	<b>tm</b>	18,9	22,7	18,6	21,8	18,0	21,1	17,6	20,4
Slewing Angle	°	415		415		415		415	
Working pressure	<b>bar</b>	315	320	315	320	315	320	315	320
Oil tank capacity	<b>l</b>	130		130		130		130	
Max Oil flow	<b>l/min</b>	80		80		80		80	
Max lifting height	<b>m</b>	11,9		13,9		16,0		18,2	
Standard crane weight	<b>kg</b>	2305	2375	2455	2530	2600	2680	2715	2800

**130 countries**  
**3,000 employees**  
**25,000 customers**  
**37 subsidiaries**  
**12 production facilities**



**Hyva is a leading provider of innovative and highly efficient transport solutions for commercial vehicles used in transport, construction, mining, materials handling and environmental service industries.**

**Founded in 1979 in the Netherlands, the company has a global presence with 37 fully owned subsidiaries, extraordinary service coverage and 12 manufacturing facilities in Brazil, China, Europe and India.**

For more information on Hyva, please visit [www.hyva.com](http://www.hyva.com)

or follow us on:



**Hyva Holding B.V.**  
Antonie van Leeuwenhoekweg 37  
2408 AK Alphen aan den Rijn  
The Netherlands  
Telephone: +31 (0)172 - 42 35 55  
Telefax: +31 (0)172 - 42 08 80  
[info@hyva.com](mailto:info@hyva.com)  
[www.hyva.com](http://www.hyva.com)



**Quality and  
environmental certified**

**DEALER STAMP**