

F A V C O 60T SPECIFICATIONS

F A V C O 60T 60 Ton (55 MT) Hydraulic Boom Crawler Crane

F A V C O 60T
*is based on a
Caterpillar Module
incorporating a 325
Excavator Upper
and a 325 Lower.*

powered by



STANDARD EQUIPMENT

Boom

33 ft. – 105 ft. (10.1 – 32.3), 4 section telescoping type extended and retracted independently by two double-acting hydraulic cylinder and cable crowd system.
Maximum Tip Height : 115 ft. (35m)

Boom Point

Six high-density nylon sheaves mounted with heavy-duty roller bearings.

Boom Elevation

Double-acting hydraulic cylinder. Operating range from 2° below to 80° above horizontal. Working range from 15° to 80° is achievable in 50 seconds at maximum operating speeds.

Winches

One Standard fully modular capacity winch available. Up to three winches can be installed to accommodate any particular application. [2nd and 3rd winch as options (*) available] Winch frame designed to retrofit hoists from other manufacturers.

Planetary geared system powered by one high efficiency 2 speed motor. Automatic, spring applied, hydraulically released safety break. Freefall winches as option available.

?? Winch I

With 2-speed motor.

Maximum single line speed

- | | |
|-----------------------|----------------------|
| 1. Bottom layer | 442 FPM (121 m/min.) |
| 2. Intermediate layer | 521 FPM (159 m/min.) |
| 3. Top Layer | 601 FPM (183 m/min.) |

Maximum single line winch pull

- | | |
|-----------------------|-----------------------|
| 1. Bottom Layer | 16,610 lbs (7, 550kg) |
| 2. Intermediate layer | 14,090 lbs (6,405 kg) |
| 3. Top Layer | 12,230 lbs (5,559 kg) |

Maximum permissible line pull

¾ in. (19mm) 16,610 lbs (7,550 kg)

Maximum rope stowage

¾ in. (19mm) 855 ft (261 m)

656-ft (200 m) of ¾ in. (19 mm) diameter, 2160 N/mm², rotation resistant wire rope supplied, with standard unit.

?? Winch II 2-speed motor.

Maximum single line speed

- | | |
|-----------------------|---------------------|
| 1. Bottom Layer | 231 FPM (70 m/min.) |
| 2. Intermediate Layer | 256 FPM (78 m/min.) |
| 3. Top Layer | 282 FPM (86 m/min.) |

[High speed option]

- | | |
|-----------------------|----------------------|
| 1. Bottom Layer | 321 FPM (92 m/min.) |
| 2. Intermediate Layer | 357 FPM (109 m/min.) |
| 3. Top Layer | 392 FPM (119 m/min.) |

Maximum single line pull

- | | |
|-----------------------|-----------------------|
| 1. Bottom Layer | 14,900 lbs (6,773 kg) |
| 2. Intermediate Layer | 13,410 lbs (6,095 kg) |
| 3. Top Layer | 12,190 lbs (5,541 kg) |

Maximum permissible line pull

5/8 in. (16 mm) 14,900 lbs (6,773 kg)

Maximum rope stowage

5/8 in. (16 mm) 294 ft (90 m)

294-ft (90 m) of 5/8-in. (16 mm) diameter, 2160 N/mm², rotation resistant wire rope supplied, with standard unit.

Swing

360° continuous rotation, hydrostatic independent planetary reduction. Mechanism driven by a pinion gear sealed in a grease bath.

Heavy-duty swing bearing

Maximum speed: 1.5 rpm

Hydraulic System

Caterpillar's hydraulic cross-sensing system consisting of two variable displacement, axial-piston pumps for all cranes and travel functions. A single section, gear type pump powers the pilot circuit. Main pumps are electronically controlled and dependent on engine speed. Power modes match hydraulic

- 95% of the engine horsepower is deliverable as hydraulic power.
- CAT's XT hoses and O-ring face seal couplings are used throughout.

Combined capacity 110 GPM (416 LPM)

Maximum capacity operating pressure:

Travel 4,975 psi (350 bar)

Implements 4,550 psi (320 bar)

Reservoir 2 x 36 gallon (2 x 136 liters)

Valves

Caterpillar 325 Standard 8 bank valve block. Strategically located sample ports for oil and pressure checks.

Controls

Joystick for swing, boom elevation, telescope main and auxiliary hoists. Foot pedals for travel. Tracks extend and retract is controlled by Push button on the joysticks. Straight travel controls provided as option.

Engine

Automatic engine control and electronic power unit control with back-up system.

Caterpillar 3116TA, 6.6L six cylinder, water-cooled, quad turbo-charged, diesel. 168hp (125 kW) @ 2000 rpm.

Fuel Tank Capacity 111 gallons (420 liters)

Cab

Quiet Caterpillar work station with ergonomic control placement and convenient adjustments, low lever and pedal effort, ergonomic seat design and highly efficient ventilation. Excellent viewing area through large, wide windows and a large push-open skylight provides upward visibility.

The operators cabin meets the following ISO standards:

ISO 5006; 3411; 2867; 10263; 6682; 7096

Cab includes:

Air conditioning with automatic climate control

AM/FM Radio with cassette player

Cigarette lighter & Ash tray

Coat hook

Compartments: Literature, Storage (lunchbox), Small tray on console

Drink holder

Floor mat

Handrails

Heater with defroster

Horn, signaling/warning

Hydraulic starter systems lock lever
 Instrument panel with LCD gauges
 Lights, Interior
 Joysticks, adjustable
 Seat belt, retractable
 Seat, four-way adjustable suspension with arm rests
 Travel controls, pedals with removable levers
 Ventilation, positive-filtered
 Windows
 Windshield, upper retractable, laminated safety glass
 Windshield, lower removable, clear tempered safety glass
 Cab door window, sliding clear, tempered safety glass
 All other windows are tempered safety glass

Load Moment Indicator

LMI and anti-two block system, providing an electronic display of boom angle, length, radius, tip height, actual load and rated capacity. Audible and visual alarms. Hydraulic control lockout and function cut-off. Data logging.

Undercarriage

Caterpillar designed and built, hydraulically activated, variable gauge frame. Welded pentagonal track roller frames and hydraulic adjusters. Sealed and lubricated rollers and idlers. Sealed track with 28 in (700mm) triple-grouser shoes.

Crawler Drive System

Hand or foot actuated travel controls, fully hydrostatic system. Each track is driven by one independent, automatic shifting, two-speed axial piston motor via integral planetary final drives.

Maximum Gradeability 30%
Maximum Speed 1.24 MPH (2 kph)

Gross Vehicle Weight

	Lbs	Kg
Basic Unit	117,000	53,000
(with full counterweights)		
Rear Counterweights	(17,196)	(7,800)
(Removable)	(9,300)	(4,200)

Other Standard Equipment

Alternator, 50 amp
 Hydraulic tank, additional
 Lights, working; frame mounted
 Locks, door and cab, one-key system
 Mirrors: Right-side and Cab
 Power mode selector, with memory function
 Steps
 Straight travel circuit
 Tow eyes
 Track guiding guards, center
 Travel, two-speed with automatic shift
 Safety Platform (Operator Cab)

OPTIONAL EQUIPMENT

Main Load Block

Various manufacturers recommended load blocks with heavy duty hook up to full load capacity.

Optional Equipment continued..

Auxiliary Hoist (Non-Freefall)

With manufacturer's approved 5/8 in. (16mm) diameter, 328 ft (100m) rotation resisting wire rope.

Maximum single line speed

Bottom Layer	231 FPM (70 m/min)
Top Layer	308 FPM (94 m/min)

[High Speed]

Bottom Layer	321 FPM (98 m/min)
Top Layer	428 FPM (130 m/min)

Maximum single line winch pull with 5/8 in. (16 mm)

Bottom Layer	14,900 lbs (6,759 kg)
Top Layer	11,710 lbs (5,067 kg)

Maximum cable storage capacity

5/8 in. (16 mm) 390 ft (120 m)

Extension

30 ft. (9 m) jib (tubular construction) with 0° and 20° offset stows alongside main boom.

Two-stage boom extension 30.5 ft – 55.0 ft (9.3m – 16.8m).

Telescoping Lattice Boom Extension 33.1ft - 57.4 ft (10.1m – 17.5m) when not in use is stowed along right side of the base boom section. It is easily erected in line with the main boom by pivoting from its stored position and connecting to boom head with four corner pins to provide greater height of lift and outreach. Can be used in 20° offset position.

[Boom Weight 8300 Kgs / Cylinder Weight 640 kgs]

Auxiliary Boom Nose

Detachable Auxiliary Boom Nose of steel construction with one nylon sheave grooved for 5/8 in. (16 mm) wire rope.

Safety Walkway Package (with Safety Backrail)

Safety walkways of steel frame and high strength non-slip plastic alloy 2 ft (0.6m) wide extended from operator's cabin to end of crane. Walkways swing up into locking position for shipment.

Falling Object Guard (FOG)

Bolt-on Falling Object Guard is a reinforced steel covering for top of operator's cabin, designed to protect the operator from falling objects.

Wireless ATB Sensor

Boom length and ATB sensing assembly in lieu of standard recoil drum and line assembly, mounted on first boom power section with radio ATB receiver and transmitter for cordless operation.

Lights; cab-mounted, boom-mounted

Starting aid, cold weather

Tool kit

Various track shoes

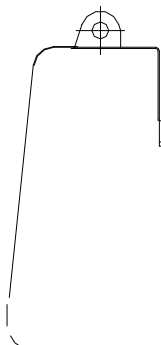
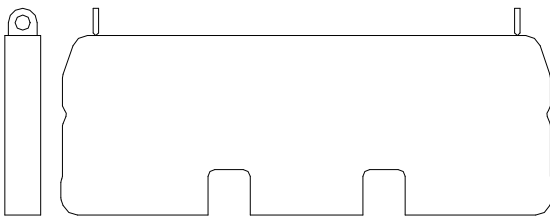
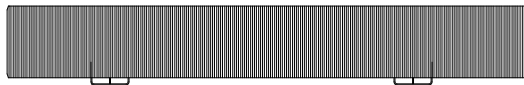
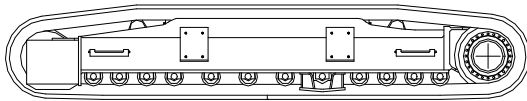
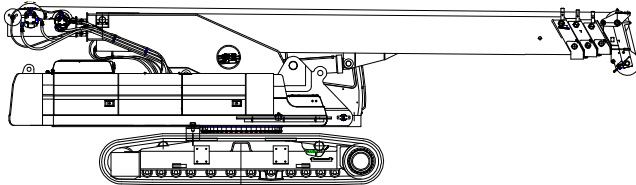
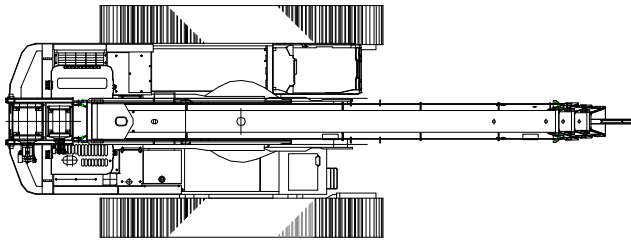
Diesel Refueling Pump

Catwalk

Vandalism Protection for cab windshield

Counterweight Removal Device

**For other optional items, please consult manufacturer.*



BASIC CRANE

LENGTH	12,162 mm	39 ft 11in.
WIDTH	4,450 mm	14 ft 7in.
HEIGHT	3,483 mm	11ft 5 in.
WEIGHT	53,000 kg	117,000 lbs.

TRACK

LENGTH	5464 mm	17ft 11 in.
WIDTH	750 mm	2 ft 5.5 in.
HEIGHT	980 mm	3 ft 2.5 in.
WEIGHT	2870 kg	6326 lbs.

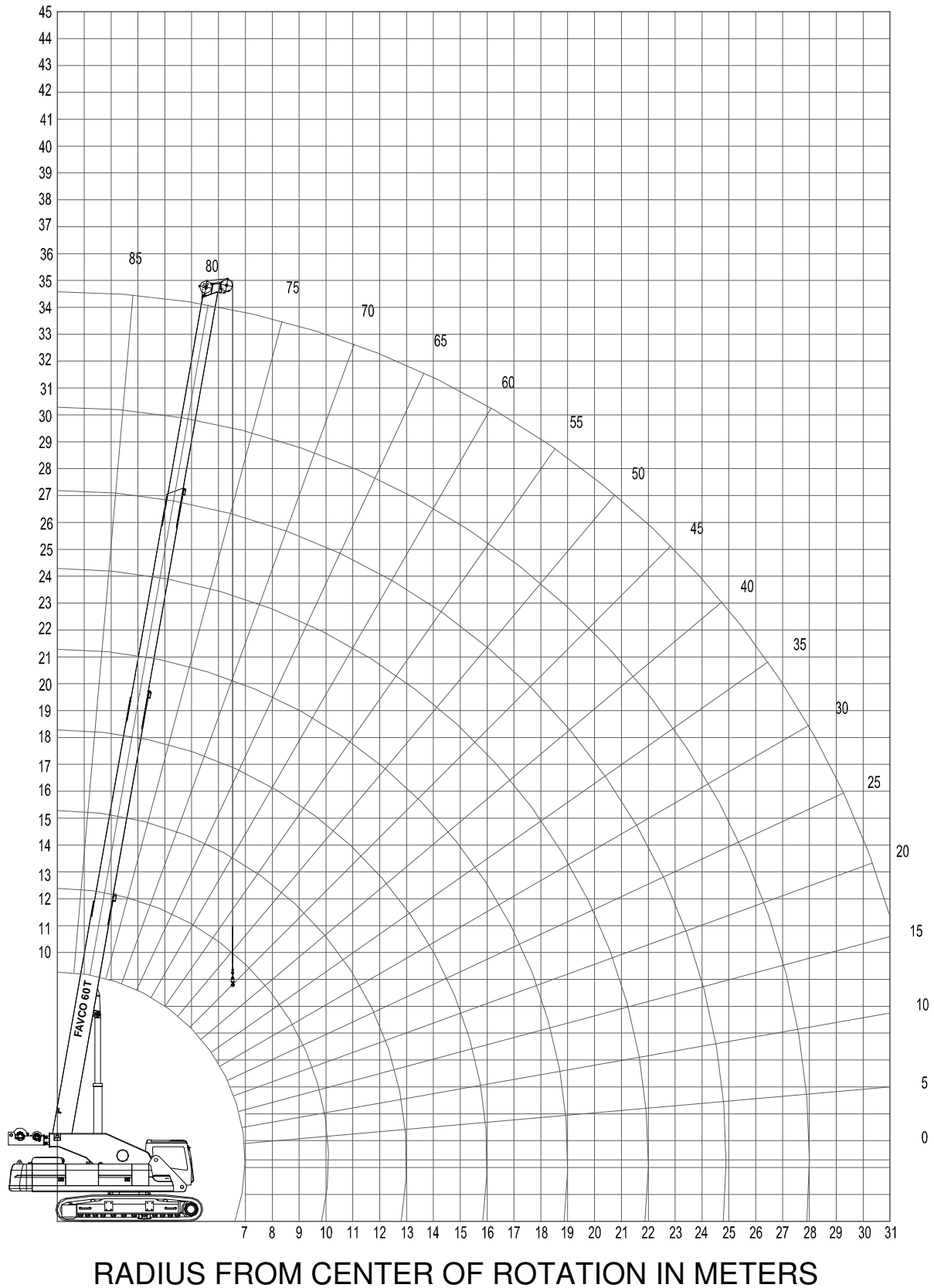
COUNTERWEIGHT

LENGTH	2740 mm	8 ft. 11.75 in.
WIDTH	200 mm	8 in.
HEIGHT	1152 mm	3ft 9.75 in
WEIGHT	4200 kg	9300 lbs

COUNTERWEIGHT (REAR)

LENGTH	2900 mm	9 ft. 6.25 in.
WIDTH	584 mm	1ft 11 in.
HEIGHT	1125 mm	3 ft 8.25 in.
WEIGHT	7800 kg	17196 lbs

OPERATING RANGE DIAGRAM



FAVCO 60T

TRACKS EXTENDED
Firm Level Ground 360° Rating

LOADCHART (METRIC)

RADIUS METER	BOOM LENGTH [METERS]												RADIUS METER	
	10.10	13.80	13.80	17.50	17.50	21.20	21.20	24.90	24.90	28.60	28.60	32.30		
3.00	55.00													3.00
4.00	44.80	35.10	19.50	32.00	15.00									4.00
5.00	34.70	33.00	19.50	29.10	15.00	24.90	14.20	19.10	12.00		11.50			5.00
6.00	27.10	26.60	19.50	26.00	15.00	22.10	13.90	18.30	11.90	15.00	11.20	11.00		6.00
7.00	23.00	20.80	18.10	20.50	15.00	19.30	13.30	16.70	11.50	14.50	11.50	11.00		7.00
8.00		16.80	17.90	16.60	15.00	13.80	12.70	13.70	10.40	13.80	9.60	9.80		8.00
9.00		14.00	15.00	13.80	12.90	11.60	12.30	11.60	9.80	11.50	9.30	9.10		9.00
10.00		10.00	12.90	11.60	11.10	10.00	10.50	10.00	9.30	10.00	9.00	8.50		10.00
12.00				8.60	10.10	9.10	9.40	9.50	7.80	9.20	7.80	7.50		12.00
14.00				6.20	8.10	6.20	7.60	6.20	7.00	6.20	7.00	6.50		14.00
16.00						5.60	6.10	6.00	6.10	5.60	6.10	6.00		16.00
18.00						4.50	5.00	4.90	5.00	4.40	5.10	5.10		18.00
20.00								3.70	4.00	3.70	4.10	4.10		20.00
22.00								3.30	3.40	3.20	3.50	3.50		22.00
24.00										2.00	3.00	3.00		24.00
26.00											2.50	2.50		26.00
28.00												2.00		28.00
29.00												1.80		29.00
Tele I	0%	50%	0%	100%	0%	100%	0%	100%	0%	100%	50%	100%		
Tele II	0%	0%	25%	0%	50%	25%	75%	50%	100%	75%	100%	100%		
Tele III	0%	0%	25%	0%	50%	25%	75%	50%	100%	75%	100%	100%		
	<i>Extended Boom Amount in %</i>													
Meets ANSI/ ASME B 30.5 and DIN 15018 DIN 15019 Requirements														

Information:
Load ratings above the heavy line are Structurally limited capacities. Load ratings below the heavy line are stability limited capacities and do not exceed 75% of tipping.

NOTICE: This capacity chart is for reference only and must not be used for lifting purposes

F A V C O 60T

TRACKS EXTENDED
Firm Level Ground 360° Rating

LOADCHART (IMPERIAL)

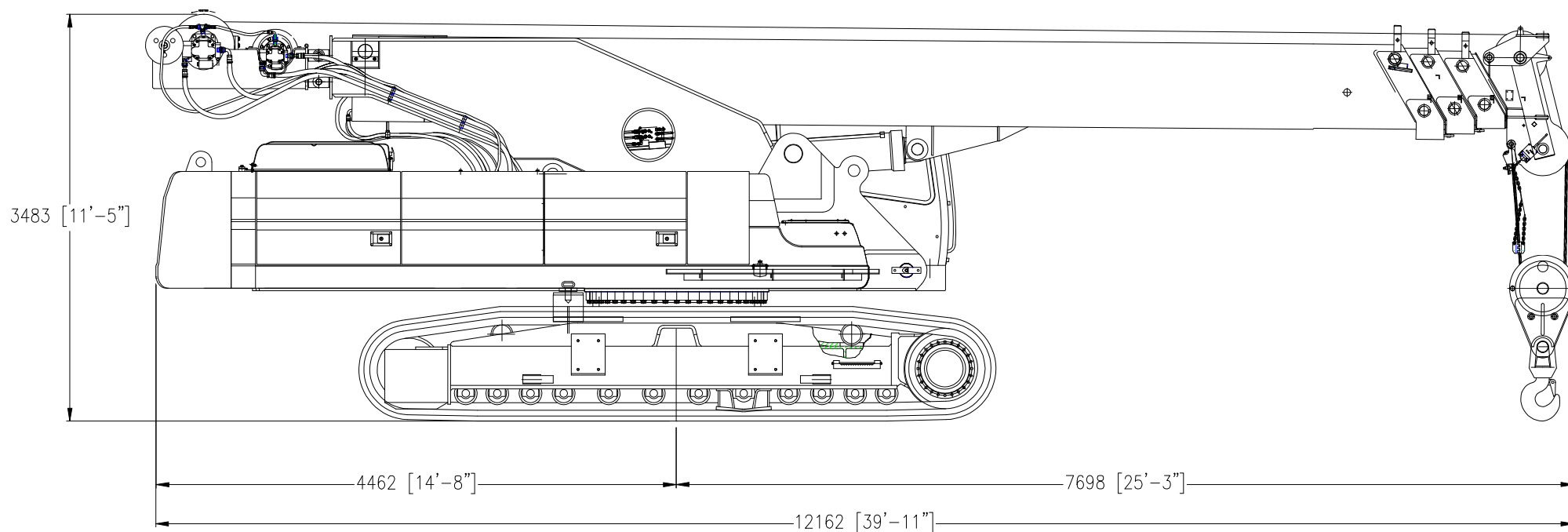
RADIUS FEET	BOOM LENGTH [FEET]												RADIUS FEET	
	33.14	45.28	45.28	57.41	57.41	69.55	69.55	81.69	81.69	93.83	93.83	105.97		
10	121254													10
13	98767	77382	42990	70548	33069									13
16	76500	72753	42990	64155	33069	54895	31306	42108	26456		25353			16
20	59745	58643	42990	57320	33069	48722	30644	40345	26235	33069	24692	24251		20
23	50706	45856	39904	45195	33069	42549	29322	36817	25353	31967	25353	24251		23
26		37038	39463	36597	33069	30424	27999	30203	22928	30424	21164	21605		26
30		30865	33069	30424	28440	25574	27117	25574	21605	25353	20503	20062		30
33		22046	28440	25574	24471	22046	23149	22046	20503	22046	19842	18739		33
39				18960	22267	20062	20723	20944	17196	20283	17196	16535		39
46				13669	17857	13669	16755	13669	15432	13669	15432	14330		46
52						12346	13448	13228	13448	12346	13448	13228		52
59						9921	11023	10803	11023	9700	11244	11244		59
66								8157	8819	8157	9039	9039		66
72								7275	7496	7055	7716	7716		72
79										4409	6614	6614		79
85											5512	5512		85
92												4409		92
95												3968		95
Tele I	0%	50%	0%	100%	0%	100%	0%	100%	0%	100%	50%	100%		
Tele II	0%	0%	25%	0%	50%	25%	75%	50%	100%	75%	100%	100%		
Tele III	0%	0%	25%	0%	50%	25%	75%	50%	100%	75%	100%	100%		
	<i>Extended Boom Amount in %</i>													
Meets ANSI/ ASME B 30.5 and DIN 15018 DIN 15019 Requirements														

NOTICE: This capacity chart is for reference only and must not be used for lifting purposes

60T Specs Rev 040505

Courtesy of Crane.Market

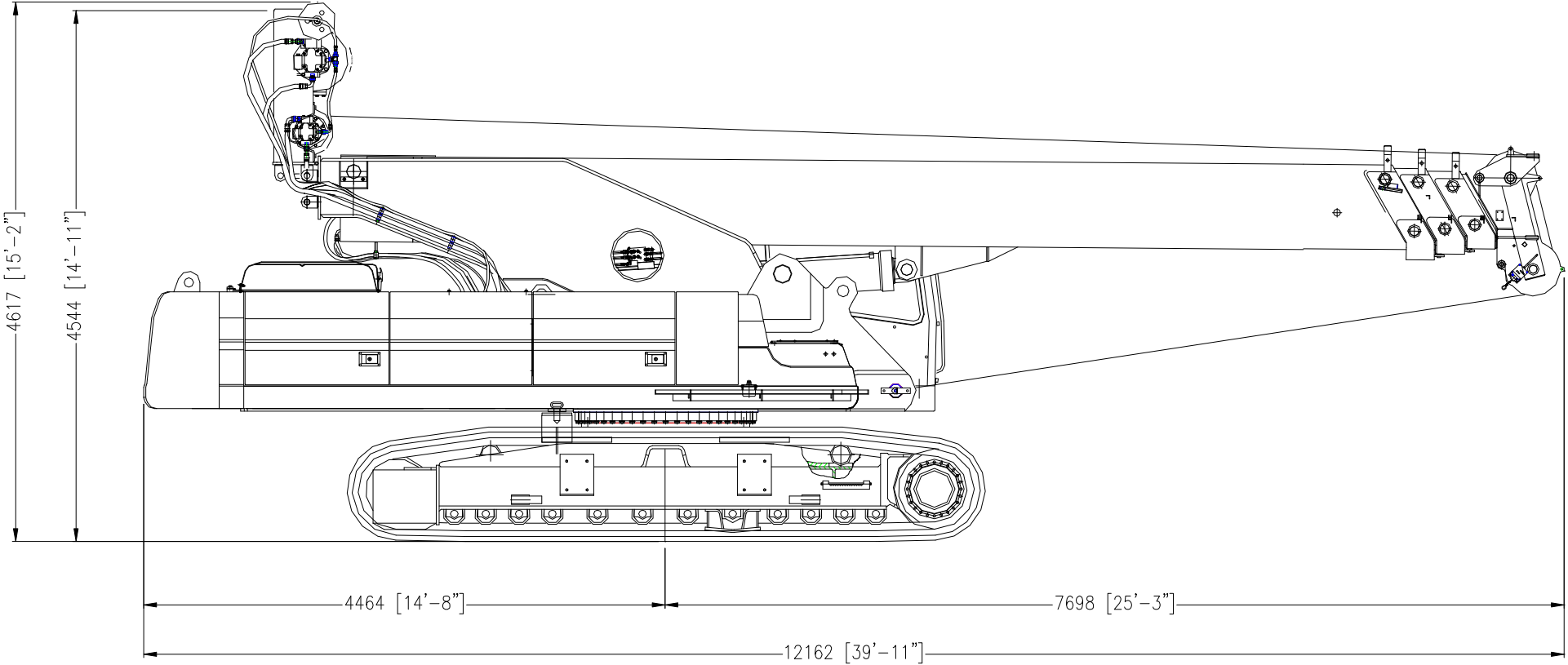
TRANSPORT MODE

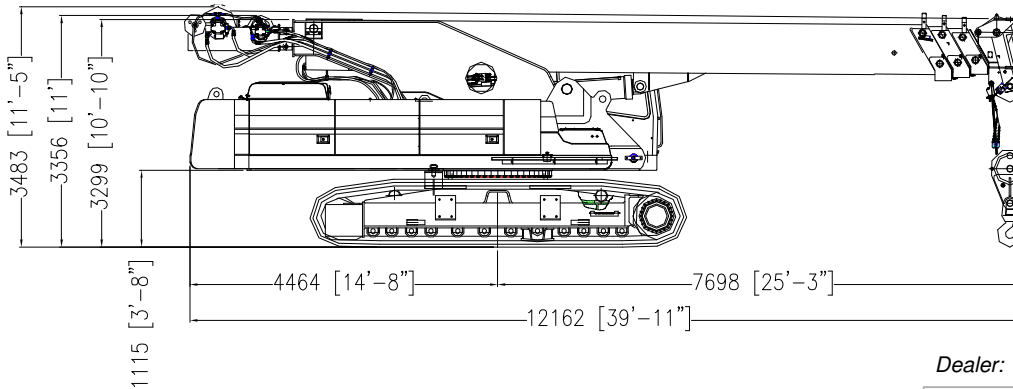
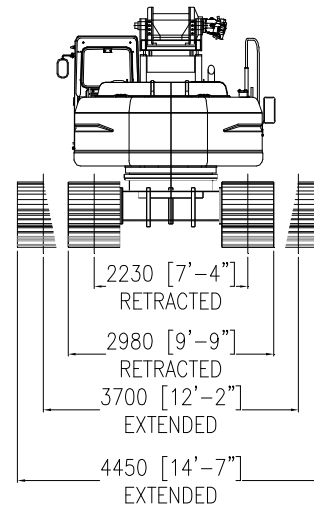
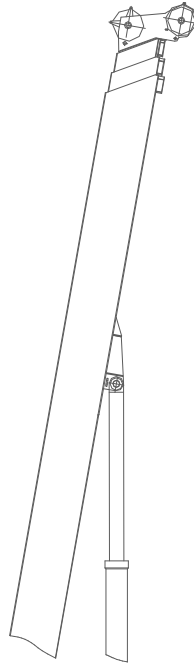
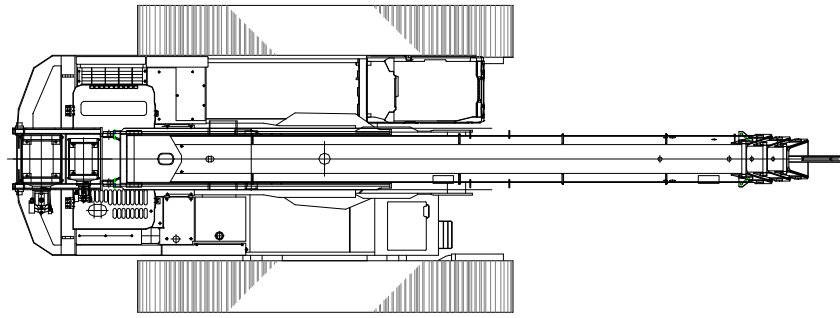


FAVCO 60T

DIMENSIONS

SERVICE MODE

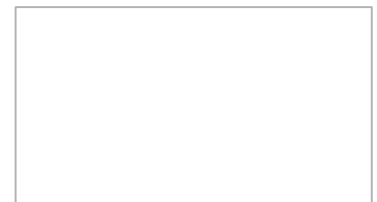




FAVELLE FAVCO CRANES USA, INC
 4 Mile East, FM 106, PO Box 3049
 Harlingen, Texas 78551-3049 USA
 Tel: (956) 428-7488
 Fax: (956) 428-7749
 Email: sales@favcousa.com

www.favellefavco.com

Dealer:



Malaysia	Tel: +603 3373-7835	Fax: +603 3373-7830	Email: admin@ffc.po.my
Australia	Tel: +612 9608-2000	Fax: +612 9607-0022	Email: favcosyd@favellefavco.com.au
Singapore	Tel: +65 366-3508	Fax: +65 366-3503	Email: favelle@singnet.com.sg
London	Tel: +44 20 7016-9701	Fax: +44 20 7016-9100	Email: favcokroll@aol.com
Denmark	Tel: +45 4818-7400	Fax: +45 4818-8807	Email: krollcranes@krollcranes.dk
Thailand	Tel: +66 2261-0580	Fax: +66 2259-1537	Email: favco@bkk4.loxinfo.co.th

Note: All charts and specifications are for information only and should not be used for lifting purposes. Continuous engineering and improvements makes it necessary that we reserve the right to make specification, equipment and price changes without notice.