

DRIVE THE CHANGE



BR.2018.04.0085.02.04

CORMIDI

C85

MINI TRACK DUMPER



DRIVE THE CHANGE

MAXIMUM EFFICIENCY



Endless hours of testing and fine tuning made the C85 the best in its class for performance and reliability. We created a durable machine with maintenance cost close to none.

UNDERCARRIAGE



Our undercarriage is like no one. Our Cormidi R&D department put all its experience towards creating the best undercarriage available on the market

SIMPLY INCREDIBLE



The Cormidi design lab created a machine that mixes industrial design with strength, power and easy to use

CORMIDI

C85
MINI TRACK DUMPER



STRENGTHS



The C85 puts incredible power in a compact and sturdy machine



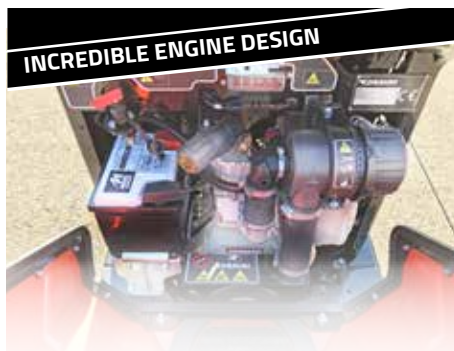
The operators has a perfect access to all the controls and can keep all the parameters under control



The swinging bucket not only load the dumper but can unload it frontally



The window on the left side of the unit allow an immediate check of the fuel level



The design of the engine compartment allows easy access to all the component



Greasing the undercarriage is easy and fast: nothing has to be taken apart.



the diesel machine has a key protected fuel cap



Galvanized sheet, protects the moving parts from materials that could damage them



The air/water cooling system allows the machine to operate in extreme conditions

CORMIDI

C85

MINI TRACK DUMPER



DRIVE THE CHANGE

STRENGTHS



The machine can be radio controlled for dangerous jobs.



Cooling system really efficiently help work in every condition.



Maintenance free throttle.



Connecting accessory that need more hydraulics has never been so easy.



A buzzer will alert the operator in case of necessity and display always allows easy reading of the working hours.



Mechanical parking and emergency brake.



Large and sturdy hooks to move the machine in total safety.



The machine's undercarriage oscillated to follow the terrain profile for increased stability and comfort.



When the situation needs a shorter unit, the stand can be closed, otherwise it opens to let the operator in.

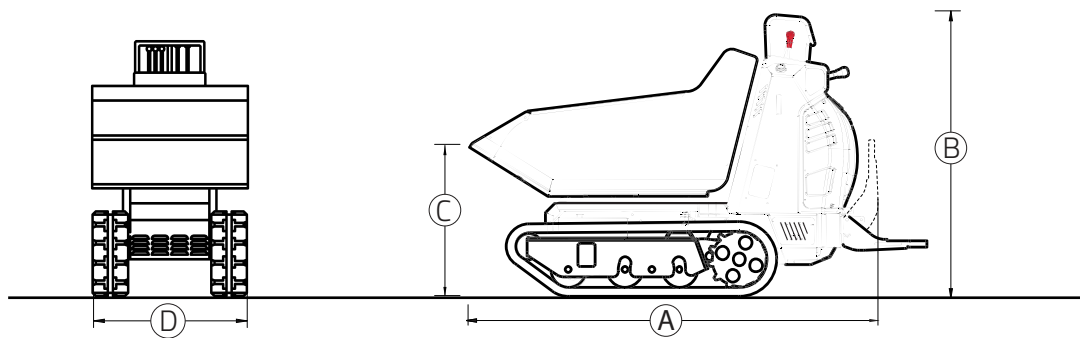
CORMIDI

CBS

MINI TRACK DUMPER



DUMPER (RI)



| | mm | inch. |
|---|------|--------|
| A | 1926 | A 75.8 |
| B | 1336 | B 52.6 |
| C | 739 | C 29.1 |
| D | 810 | D 31.9 |
| | | |
| | | |

| | C10.85 | C13.85 | C14.85 |
|--------------------|---|---|---|
| OPERATIVE CAPACITY | 800 kg 1764 Lb | 800 kg 1764 Lb | 800 kg 1764 Lb |
| TOTAL WEIGHT | 566 kg 1248 Lb | 541 kg 1193 Lb | 588 kg 1296 Lb |
| STRUCK | 0,28 m ³ 0.33 yd ³ | 0,28 m ³ 0.33 yd ³ | 0,28 m ³ 0.33 yd ³ |
| HEAPED SAE | 0,36 m ³ 0.45 yd ³ | 0,36 m ³ 0.45 yd ³ | 0,36 m ³ 0.45 yd ³ |

CORMIDI

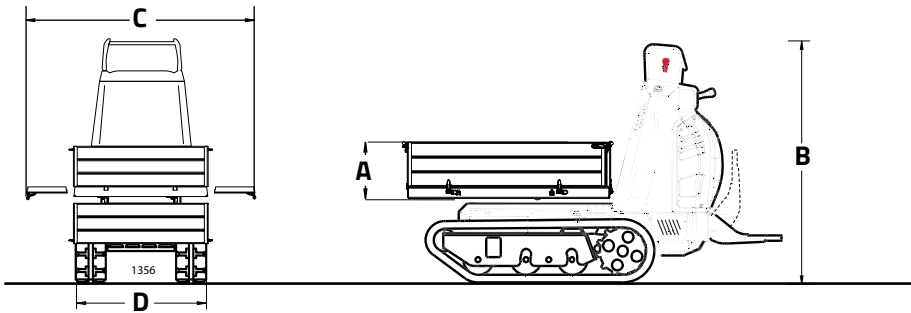
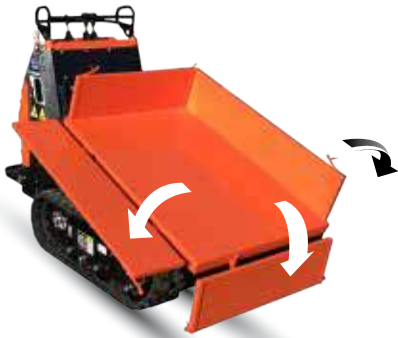
CBS

MINI TRACK DUMPER



DRIVE THE CHANGE

AGRI (RIA)



| | mm | inch. |
|---|------|-------|
| A | 305 | 12.0 |
| B | 1336 | 52.6 |
| C | 1356 | 53.4 |
| D | 810 | 31.9 |
| | | |
| | | |

| | C10.85 | C13.85 | C14.85 |
|--------------------|---|---|---|
| OPERATIVE CAPACITY | 800 kg 1764 Lb | 800 kg 1764 Lb | 800 kg 1764 Lb |
| TOTAL WEIGHT | -kg -Lb | -kg -Lb | -kg -Lb |
| STRUCK | 0,19 m ³ 0.25 yd ³ | 0,19 m ³ 0.25 yd ³ | 0,19 m ³ 0.25 yd ³ |
| HEAPED SAE | 0,31 m ³ 0,41 yd ³ | 0,31 m ³ 0,41 yd ³ | 0,31 m ³ 0,41 yd ³ |

CORMIDI

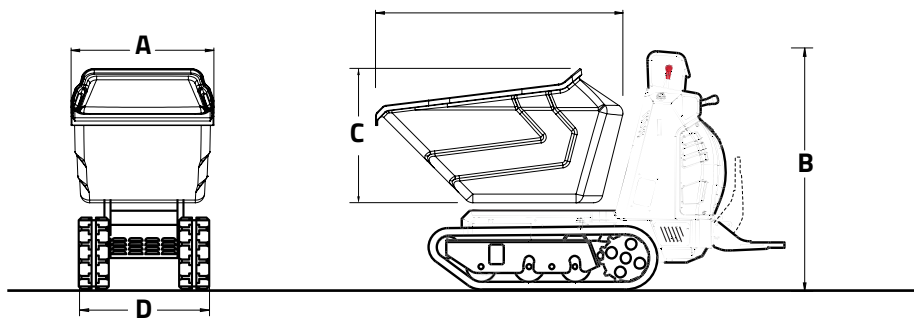
CBS

MINI TRACK DUMPER



DRIVE THE CHANGE

DUMPER (RI-Poly)



| | mm | inch. |
|---|------|-------|
| A | 777 | 28.8 |
| B | 1336 | 52.6 |
| C | 730 | 29.1 |
| D | 810 | 31.9 |
| F | 1347 | 53.0 |

| | C10.85 | C13.85 | C14.85 |
|--------------------|---|---|---|
| OPERATIVE CAPACITY | 800 kg 1764 Lb | 800 kg 1764 Lb | 800 kg 1764 Lb |
| TOTAL WEIGHT | -kg -Lb | -kg -Lb | -kg -Lb |
| STRUCK | 0,39 m ³ 0.51 yd ³ | 0,39 m ³ 0.51 yd ³ | 0,39 m ³ 0.51 yd ³ |
| HEAPED SAE | 0,53 m ³ 0.69 yd ³ | 0,53 m ³ 0.69 yd ³ | 0,53 m ³ 0.69 yd ³ |

CORMIDI

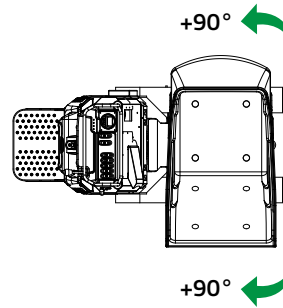
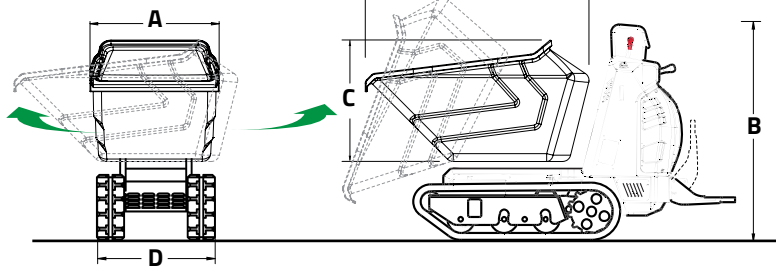
CBS

MINI TRACK DUMPER



DRIVE THE CHANGE

DUMPER (RIX-Poly)



| | mm | inch. |
|---|------|-------|
| A | 777 | 28.8 |
| B | 1336 | 52.6 |
| C | 730 | 29.1 |
| D | 810 | 31.9 |
| F | 1347 | 53.0 |

| | C10.85 | C13.85 | C14.85 |
|--------------------|---|---|---|
| OPERATIVE CAPACITY | 800 kg 1764 Lb | 800 kg 1764 Lb | 800 kg 1764 Lb |
| TOTAL WEIGHT | -kg -Lb | -kg -Lb | -kg -Lb |
| STRUCK | 0,39 m ³ 0.51 yd ³ | 0,39 m ³ 0.51 yd ³ | 0,39 m ³ 0.51 yd ³ |
| HEAPED SAE | 0,53 m ³ 0.69 yd ³ | 0,53 m ³ 0.69 yd ³ | 0,53 m ³ 0.69 yd ³ |

CORMIDI

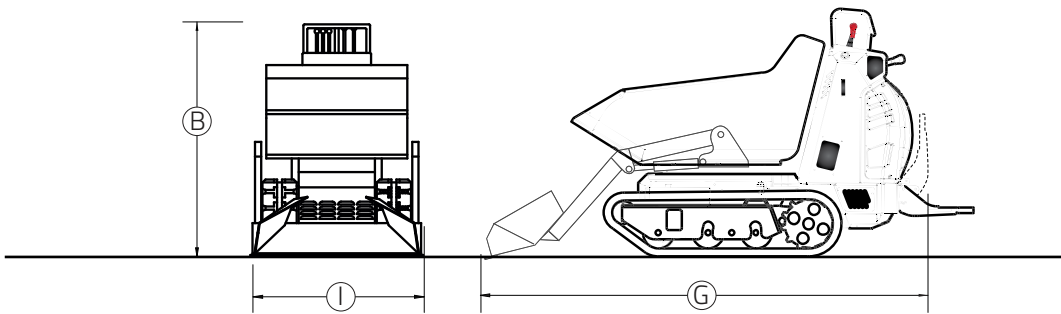
CBS

MINI TRACK DUMPER



DRIVE THE CHANGE

SELF LOADING (AC-ACW)



| | mm | inch. |
|---|------|---------|
| B | 1336 | B 52.6 |
| G | 2595 | G 102.2 |
| I | 835 | I 32.9 |
| H | 1500 | H 59.1 |
| | | |

| | C10.85 | C13.85 | C14.85 |
|--------------------|---|---|---|
| OPERATIVE CAPACITY | 800 kg 1764 Lb | 800 kg 1764 Lb | 800 kg 1764 Lb |
| TOTAL WEIGHT | 662 kg 1460 Lb | 637 kg 1404 Lb | 684 kg 1508 Lb |
| STRUCK | 0,25 m ³ 0.33 yd ³ | 0,25 m ³ 0.33 yd ³ | 0,25 m ³ 0.33 yd ³ |
| HEAPED SAE | 0,34 m ³ 0.45 yd ³ | 0,34 m ³ 0.45 yd ³ | 0,34 m ³ 0.45 yd ³ |

CORMIDI

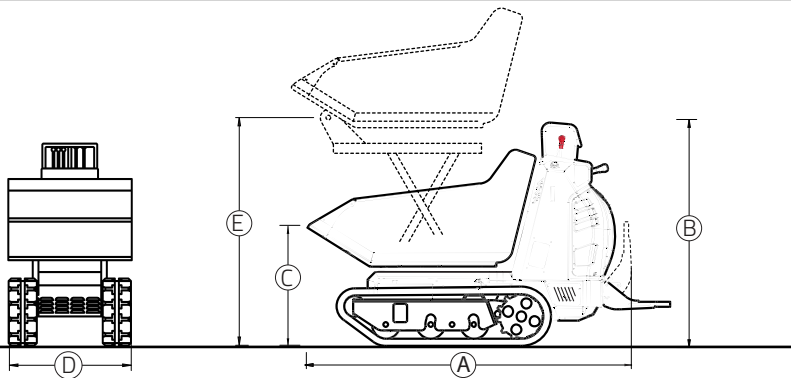
CBS

MINI TRACK DUMPER



DRIVE THE CHANGE

HI-TIP (HI)



| | mm | inch. |
|---|------|--------|
| A | 1926 | A 75.8 |
| B | 1336 | B 52.6 |
| C | 739 | C 29.1 |
| D | 810 | D 31.9 |
| E | 1500 | E 59.1 |

| | C10.85 | C13.85 | C14.85 |
|--------------------|---|---|---|
| OPERATIVE CAPACITY | 800 kg 1764 Lb | 800 kg 1764 Lb | 800 kg 1764 Lb |
| TOTAL WEIGHT | 668 kg 1472.7 Lb | 643 kg 1418 Lb | 690 kg 1521 Lb |
| STRUCK | 0,28 m ³ 0.33 yd ³ | 0,28 m ³ 0.33 yd ³ | 0,28 m ³ 0.33 yd ³ |
| HEAPED SAE | 0,36 m ³ 0.45 yd ³ | 0,36 m ³ 0.45 yd ³ | 0,36 m ³ 0.45 yd ³ |

CORMIDI

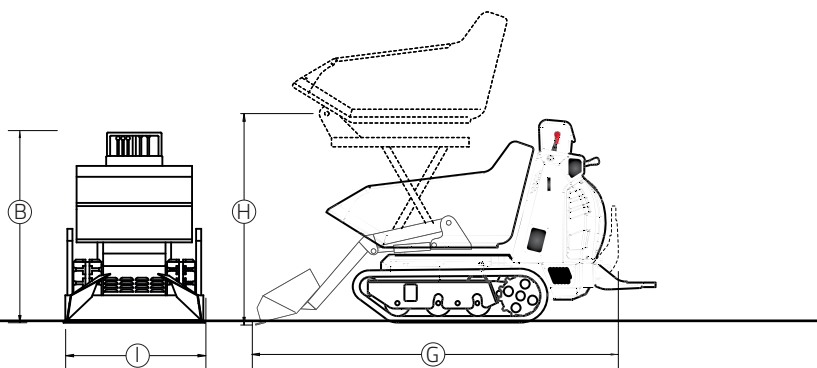
CBS

MINI TRACK DUMPER



DRIVE THE CHANGE

HI-TIP AND SELF LOADING (HIAC-HIACW)



| | mm | inch. |
|---|------|---------|
| B | 1336 | B 52.6 |
| G | 2595 | G 102.2 |
| I | 835 | I 32.9 |
| H | 1500 | H 59.1 |
| | | |
| | | |

| | C10.85 | C13.85 | C14.85 |
|--------------------|---|---|---|
| OPERATIVE CAPACITY | 800 kg 1764 Lb | 800 kg 1764 Lb | 800 kg 1764 Lb |
| TOTAL WEIGHT | 765 kg 1687 Lb | 740 kg 1631 Lb | 787 kg 1735 Lb |
| STRUCK | 0,25 m ³ 0.33 yd ³ | 0,25 m ³ 0.33 yd ³ | 0,25 m ³ 0.33 yd ³ |
| HEAPED SAE | 0,34 m ³ 0.45 yd ³ | 0,34 m ³ 0.45 yd ³ | 0,34 m ³ 0.45 yd ³ |

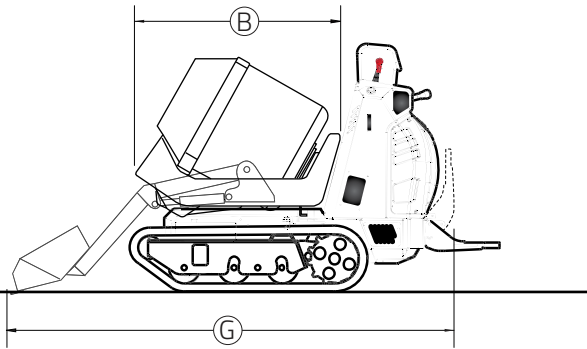
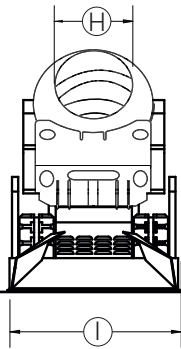
CORMIDI

CBS
MINI TRACK DUMPER



DRIVE THE CHANGE

CONCRETE MIXER (AC)



| | mm | inch. |
|---|------|---------|
| B | 1125 | B 44.3 |
| G | 2595 | G 102.2 |
| I | 835 | I 32.9 |
| H | 425 | H 16.7 |
| | | |

| | C10.85 | C13.85 | C14.85 |
|--------------------|-------------------|-------------------|-------------------|
| OPERATIVE CAPACITY | 800 kg 1764 Lb | 800 kg 1764 Lb | 800 kg 1764 Lb |
| TOTAL WEIGHT | | | |
| GROSS CAPACITY | 240 L 63.4 gal | 240 L 63.4 gal | 240 L 63.4 gal |
| NET CAPACITY | 130 L 34.3 gal | 130 L 34.3 gal | 130 L 34.3 gal |

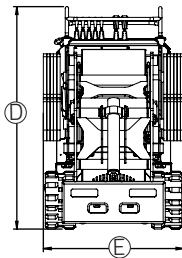
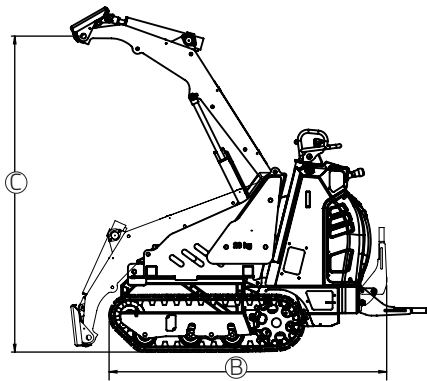
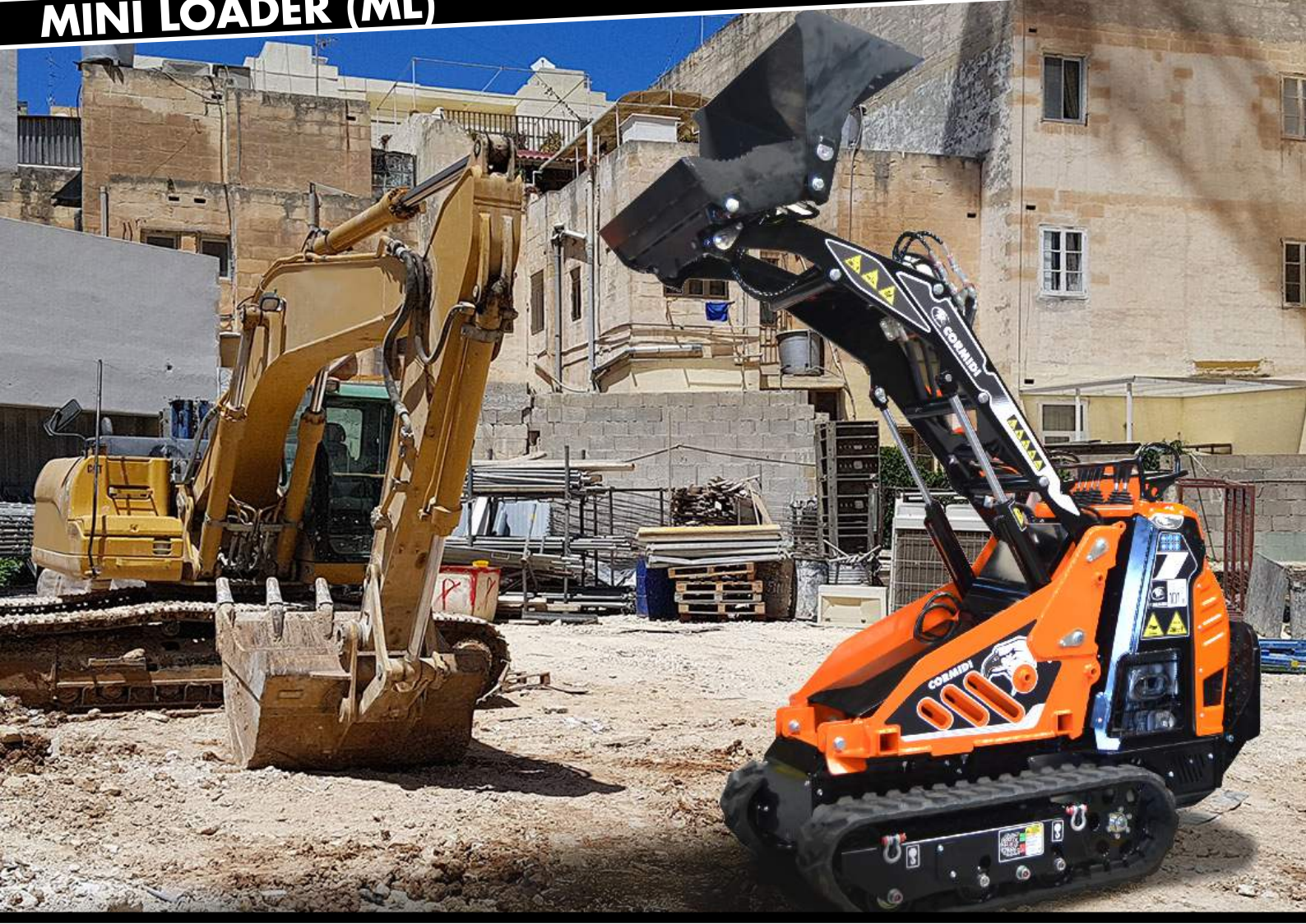
CORMIDI

CBS
MINI TRACK DUMPER



DRIVE THE CHANGE

MINI LOADER (ML)



| | mm | inch. |
|---|------|--------|
| B | 1654 | B 65.1 |
| C | 1884 | C 74.2 |
| D | 1326 | D 52.2 |
| E | 837 | E 33.0 |
| | | |
| | | |

| | C10.85 | C13.85 | C14.85 |
|---------------------------|--------------------|--------------------------------------|-------------------|
| TOTAL WEIGHT | | 775kg 1709 Lb | 821 kg 1810 Lb |
| TIPPING CAPACITY | | | |
| WITHOUT COUNTERWEIGHT | 461 kg 1.016 Lb | GROUND PRESSURE | |
| WITH COUNTERWEIGHT 120 KG | 643 kg 1418 Lb | 0,341 kg/cm ² 4.84 psi | |

CORMIDI

CBS

MINI TRACK DUMPER



DRIVE THE CHANGE

TECHNICAL DATA

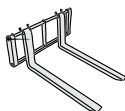
| | METRIC | U.S. | 13.85 | 10.85 | 14.85 |
|-----------------------------------|--|-------------------------|-------|-------|-------|
| ENGINE | | | | | |
| Petrol | Honda Gx 390 13 hp | | ● | | |
| Diesel | Yanmar LN 100 AE 10 hp | | | ● | |
| Diesel | Kubota Z 482 14 hp | | | | ● |
| Electric | 6 hp | | | | |
| TRANSMISSION | | | | | |
| Type | Hydrostatic | | ● | ● | ● |
| Hydraulic pump | Two full closed hydrostatic transmission | | ● | ● | ● |
| TRACKS | | | | | |
| Crawler width | 180 mm | (7.1 in) | | | |
| Rocking rollers | Yes | | ● | ● | ● |
| HYDRAULIC SYSTEM | | | | | |
| Hydraulic pump | Gear pump | | | | |
| Flow Std | 1x15,2 l/min | (1x4.0 gpm) | ● | | |
| | 1x13,4 l/min | (1x3.5 gpm) | | ● | ● |
| Hi-Flow | 1x20,8 l/min | (1x5.5 gpm) | ● | | |
| | 1x18,5 l/min | (1x4.8 gpm) | | ● | ● |
| Super Hi-Flow | 1x25,6 l/min | (1x6.7 gpm) | | | ● |
| max pressure | 150 bar | (2180 psi) | ● | ● | ● |
| PERFORMANCE AND DIMENSIONS | | | | | |
| Max. travel speed | (5 Kmh) | (3.1 mph) | ● | | |
| | (6 Kmh) | (3.7 mph) | | ● | |
| Operative weight | 800 kg | (1762 LB) | ● | ● | ● |
| Vessel contents | 0.28 m ³ | (0.37 yd ³) | ● | ● | ● |
| | 0.45 m ³ | (0.59 yd ³) | | | |
| Parking brake | Yes | | ● | ● | ● |

ACCESSORIES

remote control



Forks

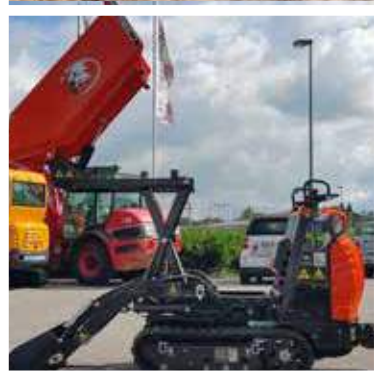


blade



mini excavator







DRIVE THE CHANGE

Please note: The machines and accessories depicted in brochures and catalogues can vary from version to version, therefore please consult your distributor for a description of standard accessories and options available for each model. Cormidi reserves the right to change or to modify the specification of the machines without warning. The photos in catalogues and brochures represent the Cormidi machines in production at time of printing. However, newer and upgraded models may look different to the photos shown in this catalogue or brochure.

 Via Fonte, 342 Roccadaspide
(SA) Italy
ph. +39 0828 943688
fax +39 0828 943963

CORMIDI

25 Broad St, Norwalk 
CT 06851, USA
ph. +1 203-846-6120
art@cormidiusa.com