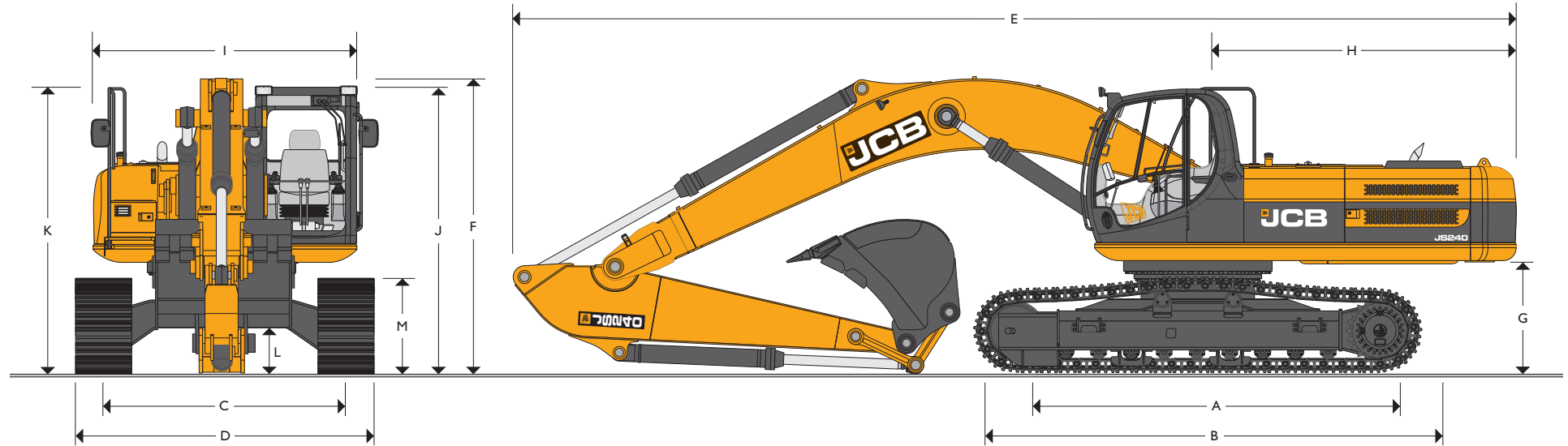




MAX. OPERATING WEIGHT: 25200 kg (55556 lb) ENGINE POWER: 147 kW (197 hp)



### STATIC DIMENSIONS

Dimensions in millimetres (ft-in)	NLC	SC	LC
A Track length on ground	3840 (12-7)	3460 (11-4)	3840 (12-7)
B Undercarriage overall length	4640 (15-3)	4260 (14-0)	4640 (15-3)
C Track gauge	2390 (7-10)	2390 (7-10)	2590 (8-6)
D Width over tracks (600 shoes)	2990 (9-10)	2990 (9-10)	3190 (10-6)
D Width over tracks (700 shoes)	3090 (10-2)	3090 (10-2)	3290 (10-9)
D Width over tracks (800 shoes)	3190 (10-6)	3190 (10-6)	3390 (11-1)
D Width over tracks (900 shoes)	3290 (10-9)	3290 (10-9)	3490 (11-5)

Dipper lengths	2.00m (6ft 7in)	2.44m (8ft 0in)	3.09m (10ft 2in)	3.53m (11ft 7in)
E Transport length with Monoboomb	10083 (33-0)	10060 (33-0)	9960 (32-8)	10010 (32-10)
F Transport height with Monoboomb	3173 (10-5)	3230 (10-7)	3050 (10-0)	3220 (10-7)

Dimensions in millimetres (ft-in)	
G Counterweight clearance	1125 (3-8)
H Tailswing radius	3000 (9-10)
I Width of superstructure	2500 (8-2)
J Height over cab	2980 (9-9)
K Height over grabrail	3059 (10-0)
L Ground clearance	486 (1-7)
M Track height	940 (3-1)



## ENGINE

<b>Model</b>	Isuzu 4HK1X European Tier 3 emissions compliant.
<b>Type</b>	Water cooled, 4-stroke, 4-cylinder in-line, direct injection, turbocharged diesel.
<b>Rated power (ISO 14899 (SAE J1995))</b>	147kW (197hp) at 2000rpm.
<b>Piston Displacement</b>	5.193 litres.
<b>Air Filtration</b>	Dry element with secondary safety element and in-cab warning indicator.
<b>Cooling</b>	Water cooled via large capacity radiator.
<b>Starting system</b>	24 volt.
<b>Batteries</b>	2 x 12 volt Heavy duty.
<b>Alternator</b>	24 volt 40 amp.
<b>Refuelling pump</b>	Electric type.

## SWING SYSTEM

<b>Swing motor</b>	Axial piston type.
<b>Swing brake</b>	Hydraulic braking plus automatic spring applied disc type parking brake.
<b>Final drive</b>	Planetary reduction.
<b>Swing speed</b>	10.6 rpm.
<b>Swing gear</b>	Large diameter, internally toothed fully sealed grease bath lubricated.
<b>Swing lock</b>	Multi position switchable brake.

## UNDERCARRIAGE

<b>Carriage options</b>	SC-Standard, LC-Long Carriage and NLC-Narrow Long Carriage.
<b>Construction</b>	Fully welded, 'X' frame type with central bellyguarding . and sloping sidemembers with dirt relief holes under top rollers.
<b>Recovery point</b>	Front and rear.
<b>Track type</b>	Sealed and lubricated.
<b>Track shoe options</b>	600mm (24in), 700mm (28in), 800mm (31in), 900mm (35in).
<b>Upper &amp; lower rollers</b>	Heat treated, sealed and lubricated.
<b>Track adjustment</b>	Grease cylinder type.
<b>Track idler</b>	Sealed and lubricated, with spring cushioned recoil.

	SC	NLC & LC
<b>No. of track guides</b>	2 per side	2 per side
<b>No. of lower rollers</b>	7 per side	9 per side
<b>No. of upper rollers</b>	2 per side	2 per side
<b>No. of track shoes</b>	47 per side	51 per side

## HYDRAULIC SYSTEM

A variable flow load sensing system with flow on demand, variable power output and servo operated, multi-function open centre control.

## Pumps

<b>Main pumps</b>	2 variable displacement axial piston type.
<b>Maximum flow</b>	2 x 226 L/min (2 x 49.7 UK GPM).
<b>Servo pump</b>	Gear type.
<b>Maximum flow</b>	21.5 L/min (4.7 UK GPM).

## Control valve

A combined four and five spool control valve with auxiliary service spool as standard. When required twin pump flow is combined to boom, dipper and bucket services for greater speed and efficiency.

## Relief valve settings

<b>Boom/Arm/Bucket</b>	343 bar (4975lbf/sq.in)
<b>With power boost</b>	373 bar (5410lbf/sq.in)
<b>Swing circuit</b>	289 bar (4192lbf/sq.in)
<b>Travel circuit</b>	343 bar (4975lbf/sq.in)
<b>Pilot control</b>	40 bar (569lbf/sq.in)

## Hydraulic cylinders

Double acting type, with bolt-up end caps and hardened steel bearing bushes. End cushioning is fitted as standard on boom, dipper and bucket rams.

## Filtration

The hydraulic components are protected by the highest standard of filtration to ensure long hydraulic fluid and component life.

<b>In tank</b>	150 micron, suction strainer.
<b>Main return line</b>	10 micron, fibreform element.
<b>Plexus bypass line</b>	1.5 micron, paper element.
<b>Pilot line</b>	10 micron, paper element.
<b>Hydraulic hammer return</b>	10 micron, reinforced microform element.

## Cooling

Worldwide cooling is provided via a full return line air blast cooler as part of a single face cooling pack, in conjunction with the engine water cooler.

## TRACK DRIVE

## Type

<b>Travel motors</b>	Fully hydrostatic, three speed with autoshift.
<b>Final drive</b>	Variable swash axial piston type, fully guarded within undercarriage frame.
<b>Service brake</b>	Planetary reduction, bolt-on sprockets.
<b>Park brake</b>	Hydraulic counter balance valve to prevent overspeeding on gradients.
<b>Gradeability</b>	Disc type, spring applied, automatic hydraulic release.
<b>Travel speed</b>	70% (35 deg) continuous.

	High – 5.6 km/h (3.4 mph).
	Mid – 3.3 km/h (2.0 mph).
	Low – 2.3 km/h (1.4 mph).
<b>Tractive effort</b>	197.1 kN (20098kgf, 44309lbf).



## EXCAVATOR END

Monoboom available along with a choice of dipper lengths to suit the requirements of reach, dig-depth, loadover height, tearout and site versatility. Reserve strength is built into the fully welded structures for hydraulic hammer and other arduous operations. Fabricated bucket tipping links are provided with a choice of lift points.

Strong, durable construction, large cross sections and multi plate fabrications to withstand high stress applications.

The 5.85m (19ft 2in) boom is designed to ensure the optimum digging envelope when matched with the three dipper lengths.

Low maintenance bronze alloy bushes with graphite plugs are fitted to boom base and boom to dipper pivots resulting in 1000 hour greasing intervals at these points.

## CAB

Excellent digging, loading and positioning visibility results from the careful design of front, side and roof lights. All screens are tinted to improve in cab conditions.

Fully opening front screen is very smooth to operate and as the lower screen is stored within the top screen frame it makes complete front screen opening easy, fast and convenient.

Fresh air ventilation available from opening door window, opening slot in front screen and fully opening front screen.

Parallelogram wash wiper for upper screen ensuring good wiped area for maximum visibility. Wiper motor is fitted in the left hand side of the roof screen so as not to affect bucket visibility when loading. Optional lower screen wiper available.

Fresh air ventilation and heater with windscreen demister. Infinitely variable blower speed, temperature and recirculation control.

Optional climate control. Fully adjustable deluxe suspension seat with arm rest adjustment and backrest recline. Optional radio with digital tuner fitted into the roof lining for maximum protection. Conveniently placed radio mute button incorporated into lower console. 12v power point and mobile phone holder built into the right hand console. Courtesy light can be operated from ground level and is illuminated for five minutes or until switched off improving operator access at night. Cab mounted roller blind protects operator from sun's glare through front or top screens.

## AMS – ADVANCED MANAGEMENT SYSTEM

Four selectable working modes link the operators control movements with the engine and hydraulic systems to maximise productivity and efficiency.

### A (Auto)

Up to 100% engine power and 100% flow. Gives variable power and speed depending on the operator's input, matching the demand for output and efficiency to the job. Power boost is automatically activated in this mode should hard conditions be encountered. Auto idle cuts in after a period of inactivity (between 5 and 30 seconds as set by the operator)

### E (Economy)

80% engine power: 95% of hydraulic flow maximises economy while maintaining excellent output.

### P (Precision)

55% engine power: 90% of hydraulic flow for fine control of grading operations.

### L (Lifting)

55% engine power: 63% of hydraulic flow with permanent power boost for maximum lifting power and control.

The Auto mode allows the AMS processor to select the optimum operational performance to match the demands of the job while the three alternative modes give precise matching of application when specific tasks are undertaken.

The adjustable position monitor mounted on the front right hand pillar of the cab gives the operator a constant read out of mode, tracking range, operating temperature and a host of other information, while retaining excellent visibility of the monitor and the job being carried out.

The required flow for hammer applications can be set and stored in the AMS memory and is automatically activated whenever the hammer pedal is depressed.

A maintenance indicator warns of imminent service needs, and all servicing and basic checks can be carried out using only the in cab display.

## CONTROLS

### Excavator

All servo lever operated to ISO control pattern, independently adjustable to the seat.

### Tracks

Individually servo operated by foot pedal or hand lever.

Speed selection via joystick button.

### Auxiliary

Via servo operated foot pedal.

### Control isolation

Via gate lock lever at cab entrance or panel switch.

### Engine speed

Dial type throttle control plus servo lever mounted one-touch idle control or separate selectable auto-idle with adjustable time delay using AMS.

### Engine stop

Ignition key operated and separate shut-down button.

### Horn

Operated via servo lever mounted button.



## SERVICE CAPACITIES

	Litres (UK gal)
Fuel tank	343 (75.5)
Engine coolant	26.8 (5.9)
Engine oil	21.5 (4.7)
Swing reduction gear	6.0 (1.3)
Track reduction gear (each side)	4.7 (1.0)
Hydraulic system	241 (53)
Hydraulic tank	120 (26.4)

## WEIGHTS AND GROUND BEARING PRESSURES

Figures include 1.14cu.m. bucket, operator and full fuel tank.

Undercarriage and shoe width mm (in)	Weight kg (lb)	Ground bearing pressure kg/cm <sup>2</sup> (lb/in <sup>2</sup> )
NLC 600mm (24)	24270 (53506)	0.49 (6.97)
SC 600mm (24)	23750 (52360)	0.53 (7.54)
LC 700mm (28)	24620 (54278)	0.43 (6.12)

## GENERAL PURPOSE EXCAVATOR BUCKETS

All buckets are JCB – Escó type fully welded steel, with sealed, hardened steel pivot pins and replaceable wear parts.

Max Width	Capacity (SAE heaped)	Weight
900mm (36in.)	0.77cu.m (1.0cu.yd.)	775kg (1709lb)
1100mm (43in.)	1.01cu.m (1.32cu.yd.)	857kg (1890lb)
1200mm (47in.)	1.13cu.m (1.49cu.yd.)	898kg (1980lb)
1500mm (59in.)	1.35cu.m (1.77cu.yd.)	936kg (2064lb)
1600mm (63in.)	1.46cu.m 1.91cu.yd.)	973kg (2145lb)

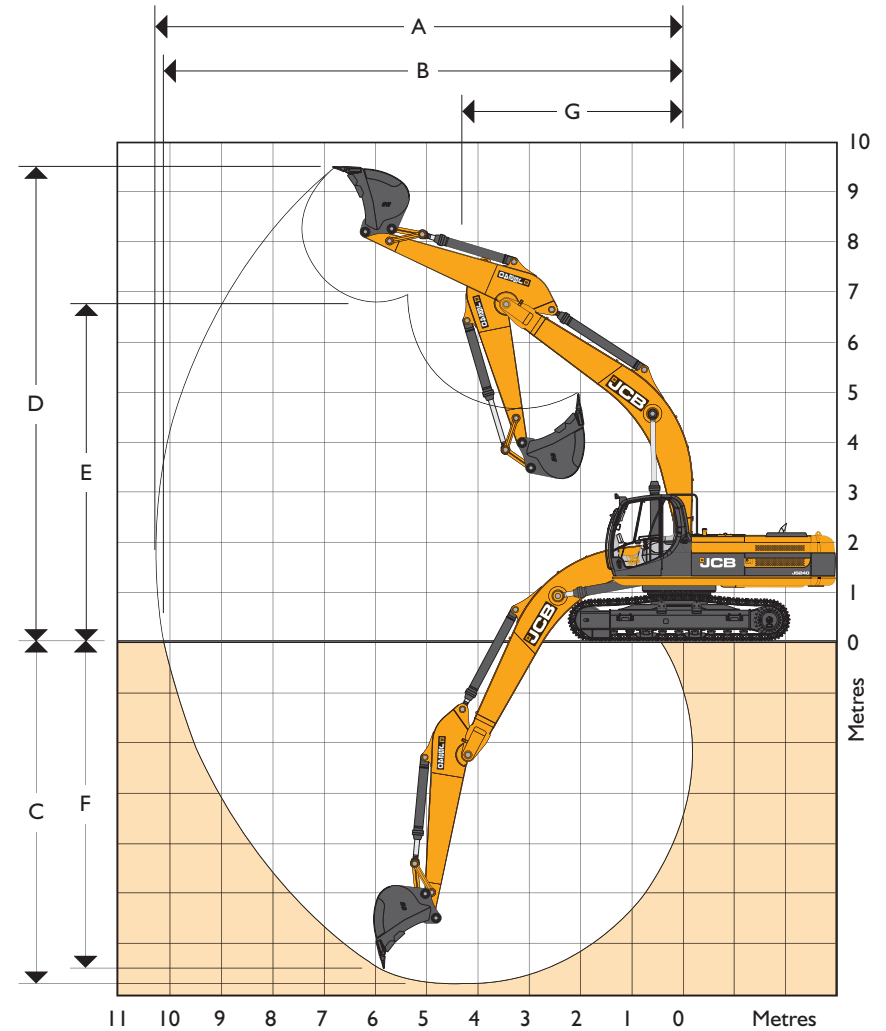
## STANDARD / OPTIONAL EQUIPMENT

**Standard Equipment:** Engine fan guard; Cold start pre-heat; Auto engine warm up; Double element air cleaner; Electric refuelling pump; Heavy-duty alternator; Electrics isolator; Heavy-duty batteries; Cab & engine soundproofing; Cab heater & screen demister; Tinted glass; Interior light; Coat hook; Cigarette lighter; Ashtray; Operator's storage shelf; Removable floor mat; Windscreen wash/wipe; Plug-in power socket; Automatic power boost; Auto-idle; One-touch engine speed control; Hydraulic cushion control; Boom/swing priority switch; Plexus hydraulic oil filtration; HSP pressure test points; Auxiliary pipework mounting brackets; Work lights – boom & mainframe mounted; Undercarriage belly guarding; Upper structure under covers; Swing system cover; Twin track guides; External mirrors; Handrail & non slip walk ways; Quick connect engine oil drain pipe; Front screen blind; Quick connect fuel tank drain pipe; Hinged engine under cover; Remote filter system.

**Optional Equipment:** Hose burst check valves & overload warning system; Tipping link mounted lift points; General purpose buckets; Ditch/grading buckets; Quickhitch buckets; Hydraulic hammers; Auxiliary pipework (full and low flow); Climate control; Cab mounted & rear work lights; Rotating beacon; Rain guard; Biodegradeable oil; Air suspension seat with heated pad and lumbar support adjustment; Lower screen wiper; Radio; High and low temperature hydraulic oil option.

## WORKING RANGE

Dimensions in m (ft-in)		5.85m (19ft 2in) Monoboomb			
Dipper length	m	2.00m (6ft 7in)	2.44m (8ft 0in)	3.09m (10ft 2in)	3.53m (11ft 7in)
A Maximum digging reach	m (ft-in)	9.19 (30-2)	9.64 (31-7)	10.27 (33-8)	10.69 (35-1)
B Maximum digging reach (on ground)	m (ft-in)	8.99 (29-6)	9.45 (31-0)	10.01 (32-10)	10.52 (34-6)
C Maximum digging depth	m (ft-in)	5.72 (18-9)	6.14 (20-2)	6.79 (22-3)	7.23 (23-8)
D Maximum digging height	m (ft-in)	8.84 (29-0)	9.23 (30-3)	9.62 (31-7)	9.85 (32-4)
E Maximum dumping height	m (ft-in)	6.15 (20-2)	6.47 (21-3)	6.83 (22-5)	7.05 (23-2)
F Maximum vertical wall cut depth	m (ft-in)	4.51 (14-9)	5.35 (17-7)	6.21 (20-4)	6.67 (21-10)
G Minimum swing radius	m (ft-in)	4.02 (13-2)	3.99 (13-1)	3.87 (12-8)	3.88 (12-9)
Bucket rotation	deg.	180°	180°	180°	180°
Max. Dipper tearout (ISO 6015)	kgf (lbf)	18272 (40285)	15484 (34136)	12248 (27002)	11198 (24685)
Max. Bucket tearout (ISO 6015)	kgf (lbf)	19574 (43154)	19574 (43154)	19574 (43154)	19574 (43154)



**LIFT CAPACITIES – Dipper length: 2.01m, 5.85m Monoboom, Trackshoes: 600mm, No bucket.**
**JS240 NLC MONO**

Reach	1.5m (4ft 11in)		3m (9ft 10in)		4.5m (14ft 9in)		6m (19ft 8in)		7.5m (24ft 7in)		9m (29ft 6in)		Capacity at Max. Reach			
															kg	kg
Load Point Ht.	kg	kg	kg	kg	kg	kg	kg	kg	kg	kg	kg	kg	kg	kg	kg	mm
6.0m (19.8ft)							6310*	6310*						6210*	5050	6947
4.5m (14.9ft)					8310*	8310*	6870*	6220	6230*	4390				6210*	4250	7655
3.0m (9.10ft)					10250*	8860	7720*	5910	6540*	4280				6170	3860	8021
1.5m (4.11ft)					11680*	8290	8490*	5620	6710	4140				6000	3720	8093
0m					12080*	8060	8890*	5450	6610	4060				6170	3800	7878
- 1.5m (- 4.11ft)			10820*	10820*	11580*	8070	8740*	5400						6800	4160	7351
- 3.0m (- 9.10ft)			13130*	13130*	10290*	8210	7720*	5500						6980*	5040	6434
- 4.5m (- 14.9ft)					7400*	7400*								6610*	6610*	4906

**LIFT CAPACITIES – Dipper length: 2.43m, 5.85m Monoboom, Trackshoes: 600mm, No bucket.**
**JS240 NLC MONO**

Reach	1.5m (4ft 11in)		3m (9ft 10in)		4.5m (14ft 9in)		6m (19ft 8in)		7.5m (24ft 7in)		9m (29ft 6in)		Capacity at Max. Reach			
															kg	kg
Load Point Ht.	kg	kg	kg	kg	kg	kg	kg	kg	kg	kg	kg	kg	kg	kg	kg	mm
6.0m (19.8ft)							5840*	5840*						5740*	4960	7489
4.5m (14.9ft)							6450*	6450*	5870*	4890				5680*	4270	8149
3.0m (9.10ft)					9590*	9590*	7340*	6550	6260*	4740				5830*	3930	8494
1.5m (4.11ft)					11290*	9250	8200*	6240	6670*	4590				6000	3800	8561
0m					11980*	8940	8730*	6020	6930*	4470				6150	3880	8358
- 1.5m (- 4.11ft)			9630*	9630*	11750*	8880	8750*	5940	6790*	4440				6350*	4190	7864
- 3.0m (- 9.10ft)			14370*	14370*	10720*	8970	8040*	5990						6470*	4920	7016
- 4.5m (- 14.9ft)			11130*	11130*	8420*	8420*								6300*	6300*	5652

Lift capacity front and rear.

Lift capacity full circle.

- Notes:**
1. For lifting capacity including bucket, subtract total weight of bucket or bucket and quickhitch from above values.
  2. Lifting capacities are based on ISO 10567, that is: 75% of minimum tipping load or 87% of hydraulic lift capacity, whichever is the less. Lifting capacities marked\* are based on hydraulic capacity.
  3. Lift capacities assume that the machine is on firm, level ground.
  4. Lift capacities may be limited by local regulations. Please refer to your dealer.

**LIFT CAPACITIES – Dipper length: 3.09m, 5.85m Monoboom, Trackshoes: 600mm, No bucket.**
**JS240 NLC MONO**

Reach	1.5m (4ft 11in)		3m (9ft 10in)		4.5m (14ft 9in)		6m (19ft 8in)		7.5m (24ft 7in)		9m (29ft 6in)		Capacity at Max. Reach			
															kg	kg
Load Point Ht.	kg	kg	kg	kg	kg	kg	kg	kg	kg	kg	kg	kg	kg	kg	kg	mm
6.0m (19.8ft)									5110*	4580				3450*	3450*	8224
4.5m (14.9ft)							5810*	5810*	5370*	4480				3400*	3390	8828
3.0m (9.10ft)			13550*	13550*	8620*	8620*	6770*	6030	5840*	4310	4350*	3220		3470*	3130	9147
1.5m (4.11ft)					10560*	8520	7760*	5670	6360*	4120	5020*	3140		3660*	3030	9209
0m			7270*	7270*	11700*	8070	8480*	5410	6540	3980	4180*	3080		3990*	3070	9022
- 1.5m (- 4.11ft)	5580*	5580*	9820*	9820*	11900*	7910	8740*	5270	6450	3900				4570*	3280	8566
- 3.0m (- 9.10ft)	10690*	10690*	15760*	15450	11270*	7930	8390*	5260	6360*	3920				5640*	3750	7796
- 4.5m (- 14.9ft)			13220*	13220*	9610*	8120	7010*	5410						5960*	4800	6600

**LIFT CAPACITIES – Dipper length: 3.52m, 5.85m Monoboom, Trackshoes: 600mm, No bucket.**
**JS240 NLC MONO**

Reach	1.5m (4ft 11in)		3m (9ft 10in)		4.5m (14ft 9in)		6m (19ft 8in)		7.5m (24ft 7in)		9m (29ft 6in)		Capacity at Max. Reach			
															kg	kg
Load Point Ht.	kg	kg	kg	kg	kg	kg	kg	kg	kg	kg	kg	kg	kg	kg	kg	mm
6.0m (19.8ft)									4990*	4490				3420*	3420*	8238
4.5m (14.9ft)							5690*	5690*	5250*	4380				3370*	3290	8842
3.0m (9.10ft)			13330*	13330*	8490*	8490*	6650*	5930	5730*	4210	4380	3120		3440*	3030	9160
1.5m (4.11ft)					10430*	8430	7640*	5580	6250*	4030	4990	3050		3620*	2930	9223
0m			7070*	7070*	11560*	7980	8360*	5320	6440	3880	4260*	2980		3960*	2970	9035
- 1.5m (- 4.11ft)	6530*	6530*	10740*	10740*	11790*	7800	8630*	5180	6350	3800				4540*	3170	8581
- 3.0m (- 9.10ft)	10790*	10790*	16030*	15260	11180*	7820	8290*	5170	6260*	3830				5620*	3640	7812
- 4.5m (- 14.9ft)			13340*	13340*	9530*	8010	6920*	5310						5830*	4680	6618

Lift capacity front and rear.

Lift capacity full circle.

- Notes:**
1. For lifting capacity including bucket, subtract total weight of bucket or bucket and quickhitch from above values.
  2. Lifting capacities are based on ISO 10567, that is: 75% of minimum tipping load or 87% of hydraulic lift capacity, whichever is the less. Lifting capacities marked\* are based on hydraulic capacity.
  3. Lift capacities assume that the machine is on firm, level ground.
  4. Lift capacities may be limited by local regulations. Please refer to your dealer.

**LIFT CAPACITIES – Dipper length: 2.01m, 5.85m Monoboom, Trackshoes: 600mm, No bucket.**
**JS240 SC MONO**

Reach	1.5m (4ft 11in)		3m (9ft 10in)		4.5m (14ft 9in)		6m (19ft 8in)		7.5m (24ft 7in)		9m (29ft 6in)		Capacity at Max. Reach			
															kg	kg
Load Point Ht.	kg	kg	kg	kg	kg	kg	kg	kg	kg	kg	kg	kg	kg	kg	kg	mm
6.0m (19.8ft)							6690*	6240						6630*	5450	6505
4.5m (14.9ft)					8860*	8860*	7180*	6050						6340	4490	7257
3.0m (9.10ft)					10780*	8610	7970*	5770	5920	4170				5740	4050	7643
1.5m (4.11ft)							8030	5520	5800	4060				5570	3900	7718
0m					12030*	8010	7880	5390						5750	4010	7492
- 1.5m (- 4.11ft)			13310*	13310*	11320*	8050	7870	5380						6420	4460	6935
- 3.0m (- 9.10ft)			12400*	12400*	9710*	8230								7140*	5590	5952
- 4.5m (- 14.9ft)																

**LIFT CAPACITIES – Dipper length: 2.43m, 5.85m Monoboom, Trackshoes: 600mm, No bucket.**
**JS240 SC MONO**

Reach	1.5m (4ft 11in)		3m (9ft 10in)		4.5m (14ft 9in)		6m (19ft 8in)		7.5m (24ft 7in)		9m (29ft 6in)		Capacity at Max. Reach			
															kg	kg
Load Point Ht.	kg	kg	kg	kg	kg	kg	kg	kg	kg	kg	kg	kg	kg	kg	kg	mm
6.0m (19.8ft)							5840*	5840*						5740*	4460	7489
4.5m (14.9ft)							6450*	6220	5870*	4390				5370	3820	8149
3.0m (9.10ft)					9590*	8920	7340*	5890	6000	4240				4940	3490	8494
1.5m (4.11ft)					11290*	8280	8090	5570	5830	4080				4800	3370	8561
0m					11980*	7970	7860	5360	5710	3970				4910	3430	8358
- 1.5m (- 4.11ft)			9630*	9630*	11750*	7910	7760	5280	5670	3940				5330	3710	7864
- 3.0m (- 9.10ft)			14370*	14370*	10720*	8000	7820	5330						6300	4370	7016
- 4.5m (- 14.9ft)			11130*	11130*	8420*	8270								6300*	6050	5652

Lift capacity front and rear.

Lift capacity full circle.

- Notes:**
- For lifting capacity including bucket, subtract total weight of bucket or bucket and quickhitch from above values.
  - Lifting capacities are based on ISO 10567, that is: 75% of minimum tipping load or 87% of hydraulic lift capacity, whichever is the less. Lifting capacities marked\* are based on hydraulic capacity.
  - Lift capacities assume that the machine is on firm, level ground.
  - Lift capacities may be limited by local regulations. Please refer to your dealer.



**LIFT CAPACITIES – Dipper length: 3.09m, 5.85m Monoboom, Trackshoes: 600mm, No bucket.**
**JS240 SC MONO**

Reach	1.5m (4ft 11in)		3m (9ft 10in)		4.5m (14ft 9in)		6m (19ft 8in)		7.5m (24ft 7in)		9m (29ft 6in)		Capacity at Max. Reach			
															kg	kg
Load Point Ht.	kg	kg	kg	kg	kg	kg	kg	kg	kg	kg	kg	kg	kg	kg	kg	mm
6.0m (19.8ft)									5110*	4550			3450*	3450*	8224	
4.5m (14.9ft)							5810*	5810*	5370*	4450			3400*	3370	8828	
3.0m (9.10ft)			13550*	13550*	8620*	8620*	6770*	5990	5840*	4280	4350*	3200	3470*	3110	9147	
1.5m (4.11ft)					10560*	8470	7760*	5640	5850	4100	4450	3120	3660*	3010	9209	
0m			7270*	7270*	11700*	8020	7880	5370	5690	3950	4180*	3060	3990*	3050	9022	
- 1.5m (- 4.11ft)	5580*	5580*	9820*	9820*	11900*	7860	7720	5240	5610	3870			4570*	3250	8566	
- 3.0m (- 9.10ft)	10690*	10690*	15760*	15360	11270*	7880	7710	5230	5630	3900			5360	3720	7796	
- 4.5m (- 14.9ft)			13220*	13220*	9610*	8060	7010*	5370					5960*	4770	6600	

**LIFT CAPACITIES – Dipper length: 3.52m, 5.85m Monoboom, Trackshoes: 600mm, No bucket.**
**JS240 SC MONO**

Reach	1.5m (4ft 11in)		3m (9ft 10in)		4.5m (14ft 9in)		6m (19ft 8in)		7.5m (24ft 7in)		9m (29ft 6in)		Capacity at Max. Reach			
															kg	kg
Load Point Ht.	kg	kg	kg	kg	kg	kg	kg	kg	kg	kg	kg	kg	kg	kg	kg	mm
7.5m (24.7ft)									4100*	4100*			3220*	3220*	7789	
6.0m (19.8ft)									4690*	4600			3050*	3050*	8693	
4.5m (14.9ft)									5000*	4480	4060*	3270	3000*	3000*	9267	
3.0m (9.10ft)					7870*	7870*	6320*	6040	5510*	4290	4530	3190	3060*	2860	9570	
1.5m (4.11ft)			8210*	8210*	9930*	8560	7370*	5660	5840	4080	4420	3090	3210*	2770	9630	
0m			6340*	6340*	11330*	8020	7860	5350	5660	3910	4330	3000	3480*	2800	9451	
- 1.5m (- 4.11ft)	5390*	5390*	9560*	9560*	11800*	7770	7660	5170	5540	3800	4080*	2970	3930*	2960	9018	
- 3.0m (- 9.10ft)	9520*	9520*	14330*	14330*	11440*	7740	7610	5120	5530	3790			4750*	3340	8290	
- 4.5m (- 14.9ft)	14470*	14470*	14290*	14290*	10140*	7880	7490*	5220					5680*	4150	7178	
- 6.0m (- 19.8ft)					7150*	7150*							5380*	5380*	5444	

Lift capacity front and rear.

Lift capacity full circle.

- Notes:**
1. For lifting capacity including bucket, subtract total weight of bucket or bucket and quickhitch from above values.
  2. Lifting capacities are based on ISO 10567, that is: 75% of minimum tipping load or 87% of hydraulic lift capacity, whichever is the less. Lifting capacities marked\* are based on hydraulic capacity.
  3. Lift capacities assume that the machine is on firm, level ground.
  4. Lift capacities may be limited by local regulations. Please refer to your dealer.

**LIFT CAPACITIES – Dipper length: 2.01m, 5.85m Monoboom, Trackshoes: 700mm, No bucket.**
**JS240 LC MONO**

Reach	1.5m (4ft 11in)		3m (9ft 10in)		4.5m (14ft 9in)		6m (19ft 8in)		7.5m (24ft 7in)		9m (29ft 6in)		Capacity at Max. Reach			
															kg	kg
Load Point Ht.	kg	kg	kg	kg	kg	kg	kg	kg	kg	kg	kg	kg	kg	kg	kg	mm
6.0m (19.8ft)							6310*	6310*						6210*	5570	6947
4.5m (14.9ft)					8310*	8310*	6870*	6870	6230*	4860				6210*	4690	7655
3.0m (9.10ft)					10250*	9900	7720*	6550	6540*	4740				6300*	4280	8021
1.5m (4.11ft)					11680*	9320	8490*	6260	6850	4600				6130	4130	8093
0m					12080*	9090	8890*	6080	6760	4510				6310	4230	7878
- 1.5m (- 4.11ft)			10820*	10820*	11580*	9090	8740*	6030						6860	4630	7351
- 3.0m (- 9.10ft)			13130*	13130*	10290*	9230	7720*	6130						6980*	5610	6434
- 4.5m (- 14.9ft)					7400*	7400*								6610*	6610*	4906

**LIFT CAPACITIES – Dipper length: 2.43m, 5.85m Monoboom, Trackshoes: 700mm, No bucket.**
**JS240 LC MONO**

Reach	1.5m (4ft 11in)		3m (9ft 10in)		4.5m (14ft 9in)		6m (19ft 8in)		7.5m (24ft 7in)		9m (29ft 6in)		Capacity at Max. Reach			
															kg	kg
Load Point Ht.	kg	kg	kg	kg	kg	kg	kg	kg	kg	kg	kg	kg	kg	kg	kg	mm
6.0m (19.8ft)							5840*	5840*						5740*	4950	7489
4.5m (14.9ft)							6450*	6450*	5870*	4880				5680*	4250	8149
3.0m (9.10ft)					9590*	9590*	7340*	6570	6260*	4730				5760	3900	8494
1.5m (4.11ft)					11290*	9360	8200*	6250	6670*	4570				5610	3780	8561
0m					11980*	9040	8730*	6030	6700	4450				5740	3850	8358
- 1.5m (- 4.11ft)			9630*	9630*	11750*	8980	8750*	5940	6660	4420				6250	4170	7864
- 3.0m (- 9.10ft)			14370*	14370*	10720*	9080	8040*	6000						6470*	4900	7016
- 4.5m (- 14.9ft)			11130*	11130*	8420*	8420*								6300*	6300*	5652

Lift capacity front and rear.

Lift capacity full circle.

- Notes:**
1. For lifting capacity including bucket, subtract total weight of bucket or bucket and quickhitch from above values.
  2. Lifting capacities are based on ISO 10567, that is: 75% of minimum tipping load or 87% of hydraulic lift capacity, whichever is the less. Lifting capacities marked\* are based on hydraulic capacity.
  3. Lift capacities assume that the machine is on firm, level ground.
  4. Lift capacities may be limited by local regulations. Please refer to your dealer.

**LIFT CAPACITIES – Dipper length: 3.09m, 5.85m Monoboom, Trackshoes: 700mm, No bucket.**
**JS240 LC MONO**

Reach	1.5m (4ft 11in)		3m (9ft 10in)		4.5m (14ft 9in)		6m (19ft 8in)		7.5m (24ft 7in)		9m (29ft 6in)		Capacity at Max. Reach			
															kg	kg
Load Point Ht.	kg	kg	kg	kg	kg	kg	kg	kg	kg	kg	kg	kg	kg	kg	kg	mm
6.0m (19.8ft)									5110*	5050			3450*	3450*	8224	
4.5m (14.9ft)							5810*	5810*	5370*	4940			3400*	3400*	8828	
3.0m (9.10ft)			13550*	13550*	8620*	8620*	6770*	6680	5840*	4770	4350*	3580	3470*	3470*	9147	
1.5m (4.11ft)					10560*	9560	7760*	6320	6360*	4580	5020*	3500	3660*	3380	9209	
0m			7270*	7270*	11700*	9100	8480*	6050	6680	4430	4180*	3440	3990*	3420	9022	
- 1.5m (- 4.11ft)	5580*	5580*	9820*	9820*	11900*	8930	8740*	5900	6600	4350			4570*	3660	8566	
- 3.0m (- 9.10ft)	10690*	10690*	15760*	15760*	11270*	8950	8390*	5890	6360*	4380			5640*	4180	7796	
- 4.5m (- 14.9ft)			13220*	13220*	9610*	9140	7010*	6050					5960*	5350	6600	

**LIFT CAPACITIES – Dipper length: 3.52m, 5.85m Monoboom, Trackshoes: 700mm, No bucket.**
**JS240 LC MONO**

Reach	1.5m (4ft 11in)		3m (9ft 10in)		4.5m (14ft 9in)		6m (19ft 8in)		7.5m (24ft 7in)		9m (29ft 6in)		Capacity at Max. Reach			
															kg	kg
Load Point Ht.	kg	kg	kg	kg	kg	kg	kg	kg	kg	kg	kg	kg	kg	kg	kg	mm
7.5m (24.7ft)									4100*	4100*			3220*	3220*	7789	
6.0m (19.8ft)									4690*	4690*			3050*	3050*	8693	
4.5m (14.9ft)									5000*	4970	4060*	3650	3000*	3000*	9267	
3.0m (9.10ft)					7870*	7870*	6320*	6320*	5510*	4780	5060*	3570	3060*	3060*	9570	
1.5m (4.11ft)			8210*	8210*	9930*	9660	7370*	6340	6080*	4570	5170	3470	3210*	3120	9630	
0m			6340*	6340*	11330*	9100	8200*	6020	6550*	4390	5080	3380	3480*	3150	9451	
- 1.5m (- 4.11ft)	5390*	5390*	9560*	9560*	11800*	8840	8610*	5840	6530	4290	4080*	3350	3930*	3340	9018	
- 3.0m (- 9.10ft)	9520*	9520*	14330*	14330*	11440*	8810	8460*	5790	6520	4270			4750*	3760	8290	
- 4.5m (- 14.9ft)	14470*	14470*	14290*	14290*	10140*	8960	7490*	5890					5680*	4660	7178	
- 6.0m (- 19.8ft)					7150*	7150*							5380*	5380*	5444	

Lift capacity front and rear.

Lift capacity full circle.

- Notes:**
- For lifting capacity including bucket, subtract total weight of bucket or bucket and quickhitch from above values.
  - Lifting capacities are based on ISO 10567, that is: 75% of minimum tipping load or 87% of hydraulic lift capacity, whichever is the less. Lifting capacities marked\* are based on hydraulic capacity.
  - Lift capacities assume that the machine is on firm, level ground.
  - Lift capacities may be limited by local regulations. Please refer to your dealer.

## A GLOBAL COMMITMENT TO QUALITY

JCB's total commitment to its products and customers has helped it grow from a one-man business into Britain's largest privately owned manufacturer of backhoe loaders, crawler excavators, wheeled excavators, telescopic handlers, wheeled loaders, dump trucks, rough terrain fork lifts, industrial fork lifts, mini/midi excavators, skid steer loaders and tractors.

By making constant and massive investments in the latest production technology, the JCB factories have become some of the most advanced in Europe.

By leading the field in innovative research and design, extensive testing and stringent quality control, JCB machines have become renowned all over the world for performance, value and reliability.

And with a global sales and service network of over 400 distributors and agents, the company exports over 70% of its production to all five continents.

Through setting the standards by which others are judged, JCB has become one of Britain's most impressive success stories.

