



mæstro
SERIES

ENGINE

Make	: Perkins
Type	: 1104C-44T
Number of Cylinders	: 4 in line
Bore & Stroke	: 105 x 127 mm
Displacement	: 4400 cm ³
Maximum Power	: 74.5 kW, 100 hp (2200 rpm)
Maximum Torque	: 415 Nm (1350 rpm)

High power and torque output, water cooled turbocharged diesel engine.

TRANSMISSION

- Full Powershift transmission for heavy duty service
- Torque converter 2.52:1 stall ratio
- 4 forward 4 reverse gears

AXLES

- Heavy duty service type
- "Max-Trac" automatically actuating, torque proportioning differentials for maximum traction
- Planetary outboard type reduction gears
- Total 16 degrees oscillation on the front axle

CAB

- Aesthetics
- Panoramic Visual Angle
- Spacious Interior
- Ergonomic & Esthetic Interior Design
- Ergonomic Controls and Hand Brake
- Improved Ventilating and Air-conditioning System
- Rops and Fobs Certified
- Multi-functional Seat
- Adjustable Steering Wheel
- Ergonomic & Elegant Hand Throttle
- Panoramic View by Large Glass Windows

HYDRAULIC SYSTEM

Simple, reliable and high-efficiency tandem gear pump	
Main Pump Flow	: 81 lt/min (2200 rpm)
Pressure	: 230 bar
Auxiliary Pump Flow	: 64 lt/min (2200 rpm)
Pressure	: 210 bar

DRIVING SPEEDS

At 2200 rpm engine speed	
1 st gear	: 5 km/h
2 nd gear	: 9 km/h
3 rd gear	: 21 km/h
4 th gear	: 40 km/h



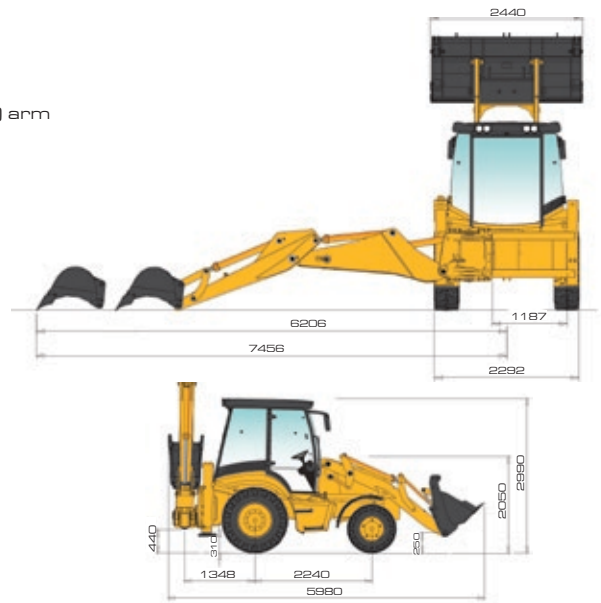
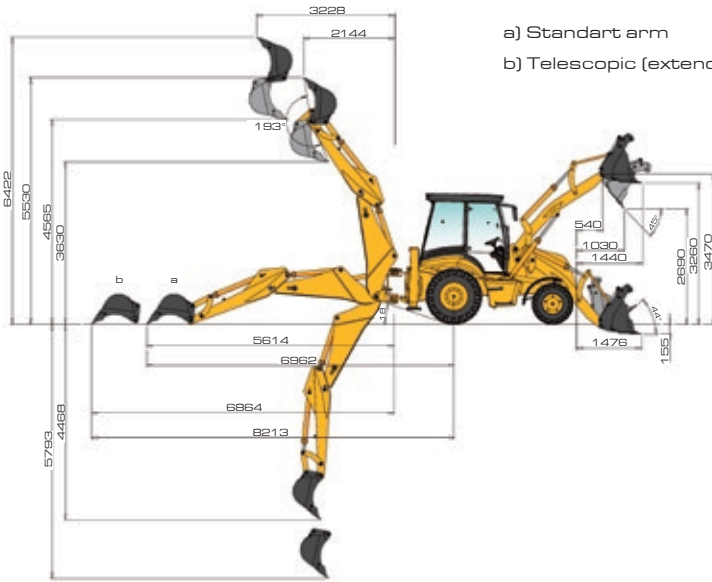
TIRES

Front	: 16 - 20 12 Ply Rating
Rear	: 16.9 - 28 12 Ply Rating

OPERATING WEIGHT

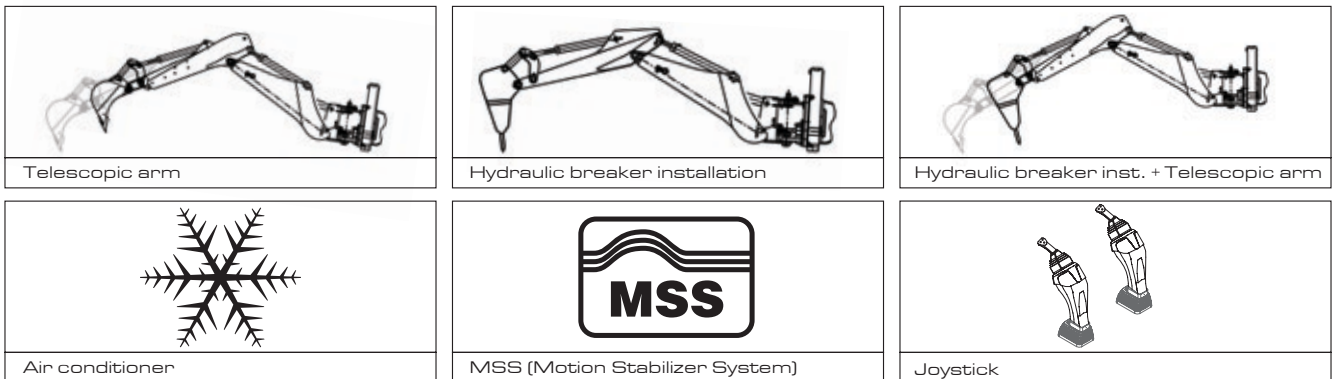
Operating weight (with standard equipment)	: 8900 kg
Operating weight (with telescopic boom)	: 9050 kg





LOADER PERFORMANCE		BACKHOE PERFORMANCE		
		Standard Arm	Telescopic Arm (extended)	Telescopic Arm (retracted)
4 in 1 bucket capacity	1.1 m ³	Max. bucket breakout force	6209 kgf	6358 kgf
Max. bucket breakout force	7890 kgf	Max. dipper breakout force	2983 kgf	2022 kgf
Max. loading arm breakout force	6780 kgf	Lifting capacity to maximum height (rear)	1608 kg	893 kg
Lifting capacity to maximum height	3300 kg	Lifting capacity to maximum height (side)	1608 kg	893 kg

Accessories



Attachments

