

# 95 TLF

Your full potential  
and beyond...



ENGLISH

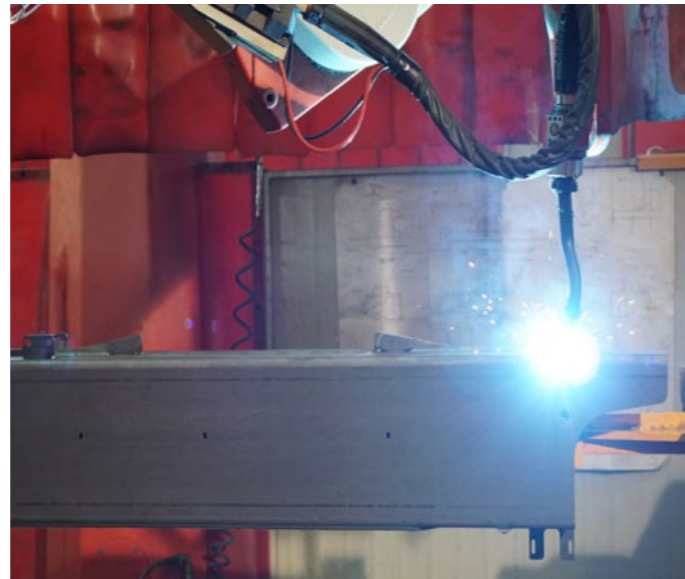
**EFFER**  
RAISE THE VALUE





**95 TLF** is an articulated crane designed to work with the maximum power and resistance to heavy work. It can be mounted on a 3 or 4 axle truck, and it's specifically designed for material handling, heavy lifting & precision jobs. In fact, 95 TLF combines the strength of a mobile crane **with the advantages of a truck crane with a jib**, and it guarantees the highest quality in design and materials.

With one crane, you can operate in many different applications, and with the fly-jib you can move and place expensive machinery, glass panes and steel construction parts on site in an easy, fast and safe way.



For more than 50 years, Effer's main goal has been to **create high-quality cranes in order to give the maximum value to lifting experts all over the world**. To get the most extreme performance and satisfy the most demanding needs, we can count on:

**Expertise:** the know-how of skilled professionals to find out the solution which fits best to the specific requirements of the market.

**Passion:** you can experience it at all levels, from R&D department to production plants, from customer service to commercial division.

**Reliability:** since 1965 we have been specialising in the production of knuckle-boom cranes from design to final tests. Moreover, Effer cranes are entirely made in our factories and plants. For this reason we are well known worldwide as one of the best loader and marine cranes manufacturers.





# construction sites



# materials handling & heavy lifting



95 TLF works at high speed when extending and retracting the boom cylinders, and the continuous rotation of its slewing ring requires just few seconds.

## TIME TO MONEY





# precision crane



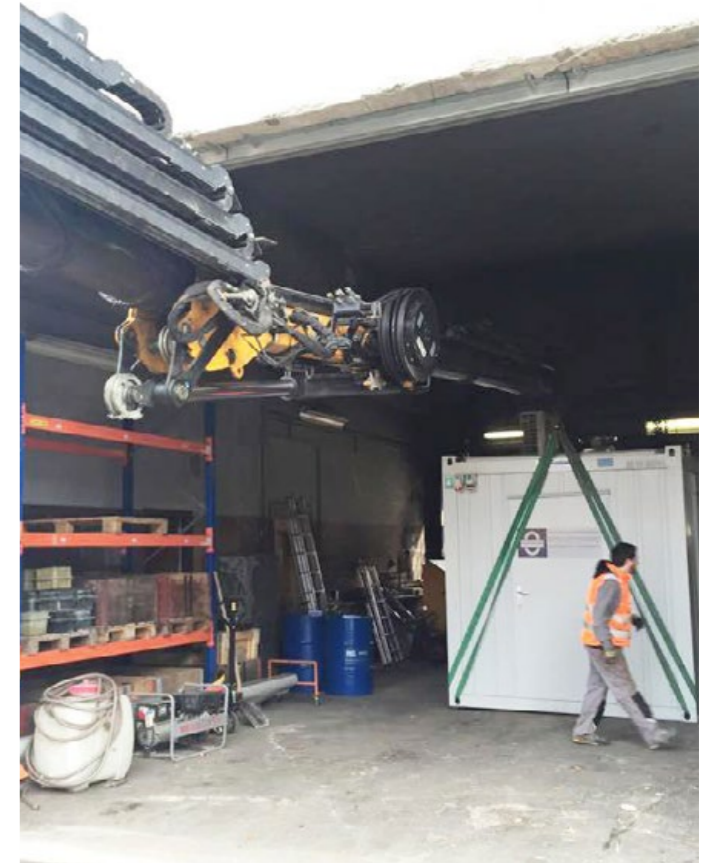
95 TLF is the perfect crane when lifting power and performance are required.

Easy and fast, it's the perfect tool for loading and unloading materials from and on the truck, and it guarantees high resistance and a long duration over time.

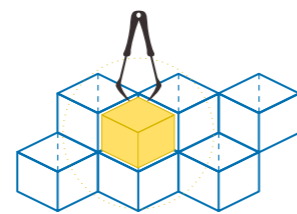
## LONG LASTING



**The HSS** function is born from the experience gained by Effer and can save up to 50% of the time in opening and retracting the extensions, thanks to the recovery of the oil otherwise destined to the tank.

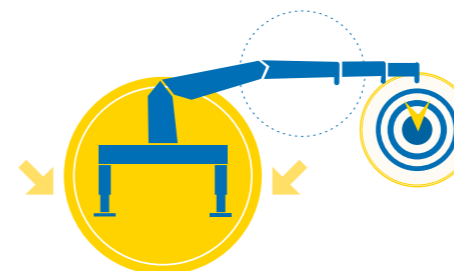


## SURGICAL PRECISION



Where the experience of the crane operator is not enough and you also need a machine capable of gentle movements and maximum precision.

## NO LIMITS



Up to 38 metres outreach





# Structure of the crane

## MADE WITH HIGH PERFORMANCE QUALITY STEEL

Effer chose to only use the best high-resistance steel on the market, that's why we build our cranes with Strenx™ steel, made by SSAB, the world's leading steel producer in the world.



## CONTINUOUS ROTATION

In rotation with slewing ring, the oil and electrical signals pass from the base to the top through a rotating distributor that does not limit the manoeuvres of the crane. The mechanical coupling of slewing ring and gear motor ensures the operator power, fast and precise movements of the load.



## PROPORTIONAL CONTROLBANK

Thanks to the use of latest-generation hydraulic valves, it is possible to handle all crane movements with gradual and progressive speed variations. The oil flow is optimized to ensure the right power and speed at all times.

## QUALITY PAINTING

Effer coating treatments guarantee a long duration and a complete protection from tear and wear due to heavy works. Geomet treatment on components ensures the maximum resistance to rust.



95 TLF

## DESIGN OF HYDRAULIC PIPES

The pipes of cylinders are designed as multi-bend to fit the movements of the crane, ensuring the maximum operating speed of the oil, even in harsh climates and prevents it from overheating.



## INTEGRATED SUBFRAME

A very compact counter frame, which guarantees more load capacity and an excellent weight/stiffness ratio.





# Load handling

**Effer cranes can work with hydraulic jib.** Thanks to its articulation, can get anywhere, for example it allows you to reach buildings roofs or other areas that you couldn't reach with a simple telescopic boom. Thanks to their design and high-resistance steel, Effer jibs are well known for their outstanding performance.

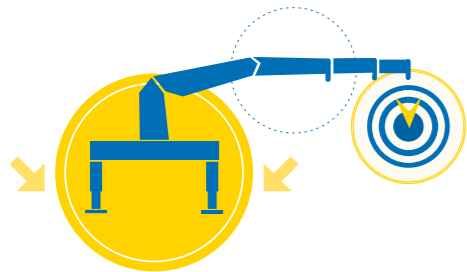


**Negative angle Jib at 17°**  
A great advantage for those who work inside buildings or at ground floors, for example to move glasses or other loads.



Only 55 sec for full opening, including jib

**NO LIMITS**



Thanks to the use of latest-generation hydraulic valves, it is possible to handle all crane movements with gradual and progressive speed variations. The oil flow is optimized to ensure the right power and speed.

**EFFER control and valve technology** makes the crane ideally suited for intensive handling of loads at construction sites

## BRONZE SIDE ADJUSTMENT PADS

Effer uses bronze adjustable pads to ensure maximum crane boom linearity over time.



## LONG LASTING



# Always straight



## SYMMETRICAL LAY-OUT OF EXTENSION CYLINDERS

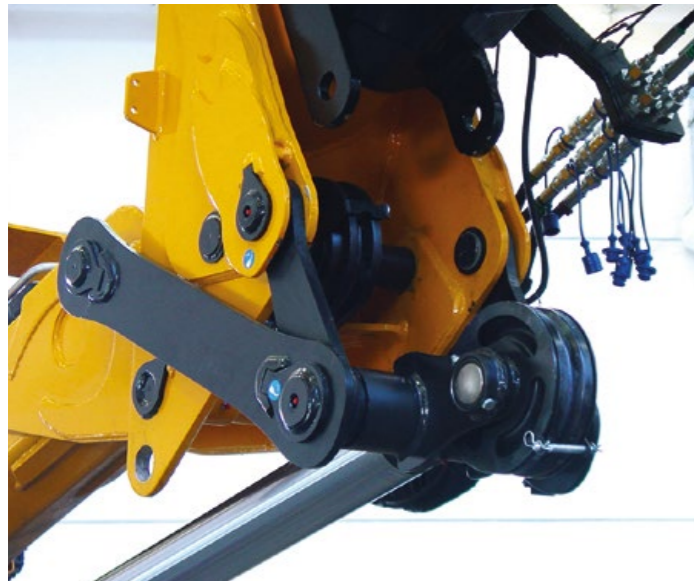
**Perfect balance.** The cylinders are arranged symmetrically in relation to the boom line. **Maximum balancing** and perfect balance of extensions during output and return maneuvers are thus attained.



# Work with the winch

## Optional winch with end stopper

Hydraulic and electronic systems controlling the winch enable the cable to reach a **high moving speed**, up to 58 metres/minute, without tangling.



The standard 2.500/1.900 daN winch can be activated via remote control. The base plate is designed for winches up to 3.500 daN.

## ELECTRONIC CONTROL SYSTEM

For this model, choose the best winch in accordance to your specific needs. You can activate it activated directly from your safe, tested and reliable SCANRECO remote control.



## CONTROL PANEL INSIDE THE CABIN

Showing all the information about crane activity.



## STABILISERS

Once the stabilizers are fully extended, the height adjustment of all stabilizers can be done from the level gauge side only.

## SAFE LOAD

### Pro.Dec

## Progressive Deceleration System

which consists of end of stroke hydraulic shock absorbers inside the extension cylinders. With the Pro.Dec system, the transfer from one extension cylinder to the next takes place at a reduced speed, for opening and closure both.

The system reduces load oscillation, making the work safer and more efficient.



## OIL COOLER WITH AUTOMATIC OR MANUAL ACTIVATION





# Optionals

## HOOKS



8/16/22 TON HOOK



Single fall, weighted 8 ton hook with single pulley



Three pulley/six falls tackle with 16 ton hook

## TOP SEAT



## CABIN WITH LIGHTS



## SWING UP STABILISERS



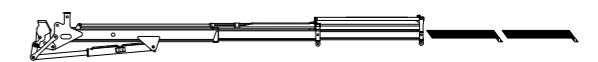
## EXTRA REAR STABILISERS



## TRUCK BODY



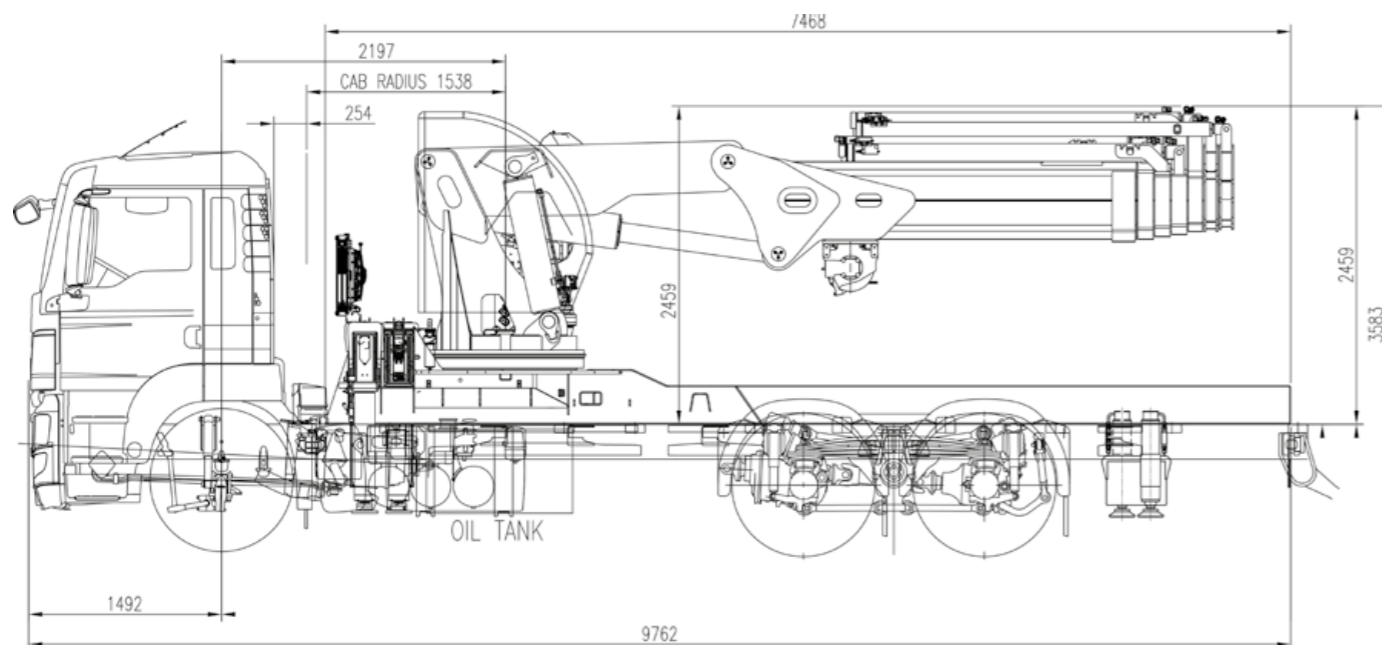
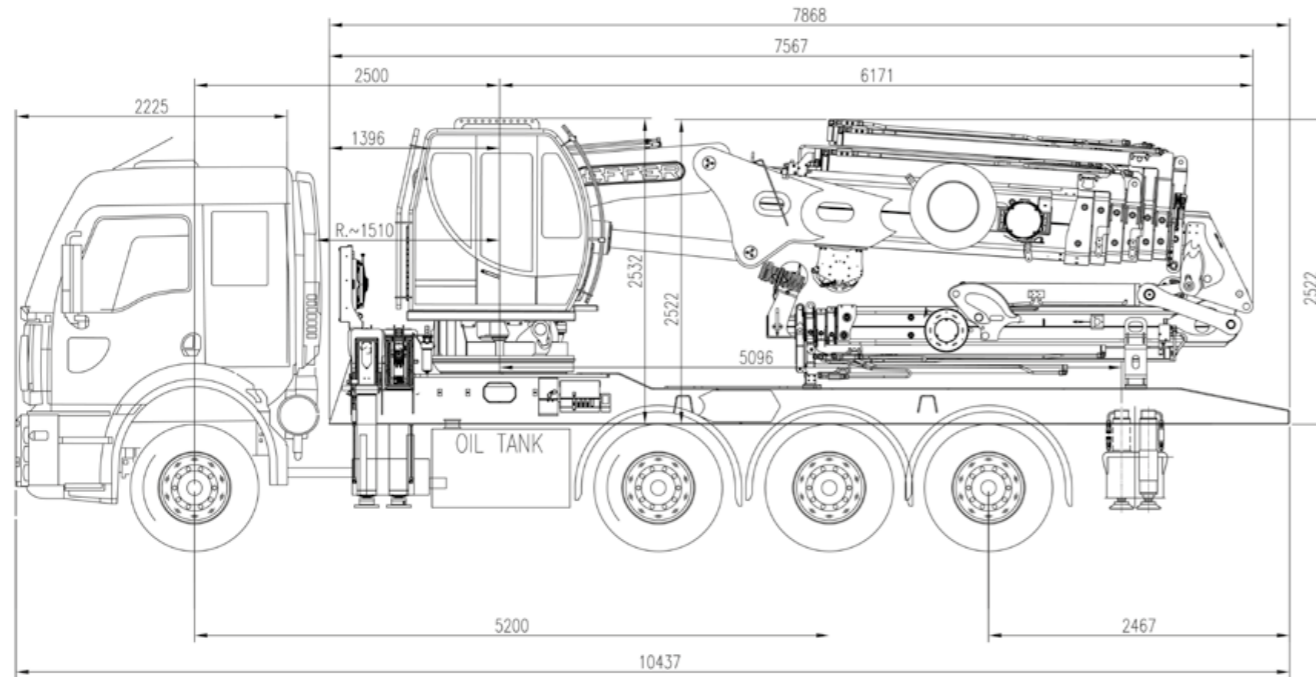
## 2 MANUAL EXTENSIONS both for boom and jib



- 1 2
- Boom manual extensions data:**
- 1 maximum lifting capacity = 2800 kg
- 2 maximum lifting capacity = 2100 kg
- Jib manual extensions data:**
- 1 maximum lifting capacity = 600 kg
- 2 maximum lifting capacity = 460 kg



# Installation studies



# Technical Data

DESCRIPTION	UNIT OF MEASURE	6S
Max. hydraulic outreach	m	19,1
Max. lifting moment (+20°)	kNm	821
Slewing arc	(°)	endless
Slewing Capacity - Max slope	%	8,7
Working pressure	bar	315
Max oil delivery to controlbank	l/m	90
Oil tank capacity	l	250/340
Weight of the standard crane (± 2%)	kg	11100

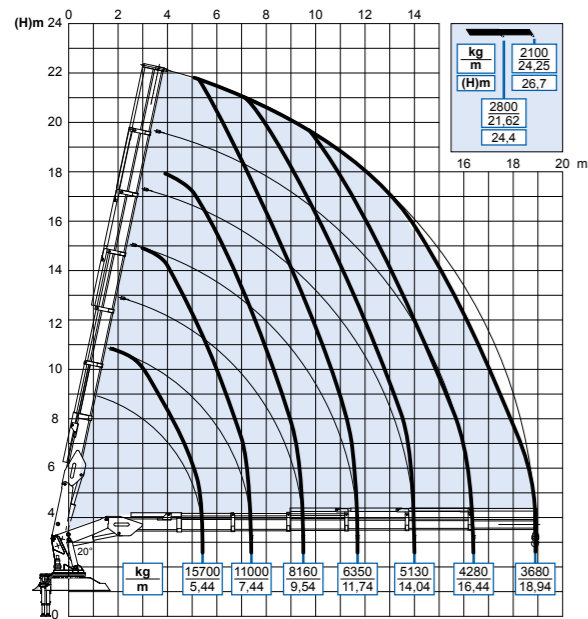
## CRANE DESIGNED ACCORDING TO STANDARDS UNI EN 12999 HC1 S1 HD4

The configurations and figures contained in the brochure are illustrative. For information on the complete offer and for more technical details, ask your Effer dealer or consult the website [www.effer.com](http://www.effer.com). The above data are subject to change. Lifting capacity is based on the maximum lifting power of the crane. The stability of the truck may require a reduction of lifting capacity.

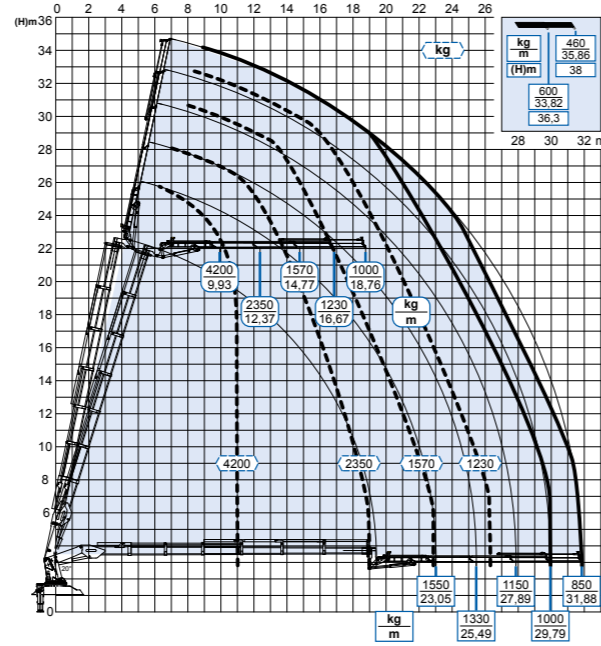


# Performance

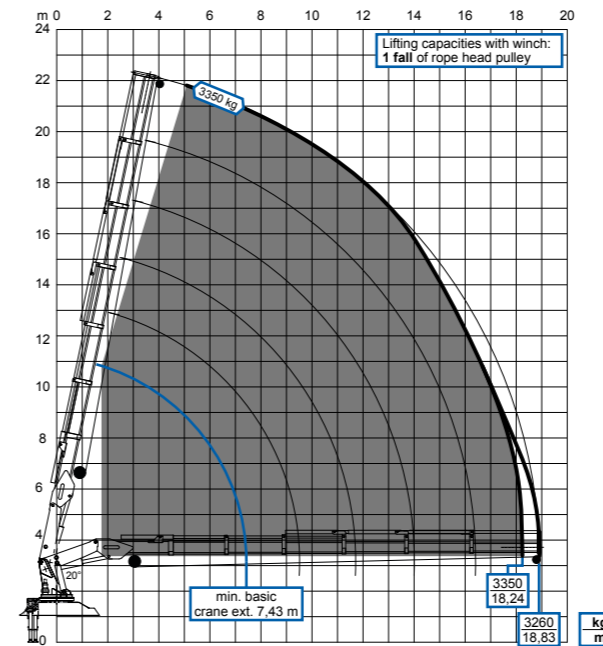
6S



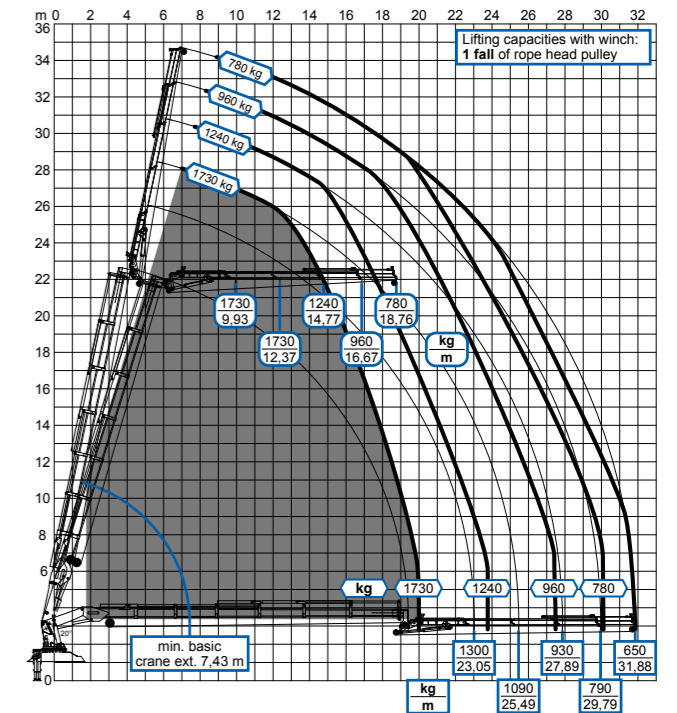
6S + JIB 4S



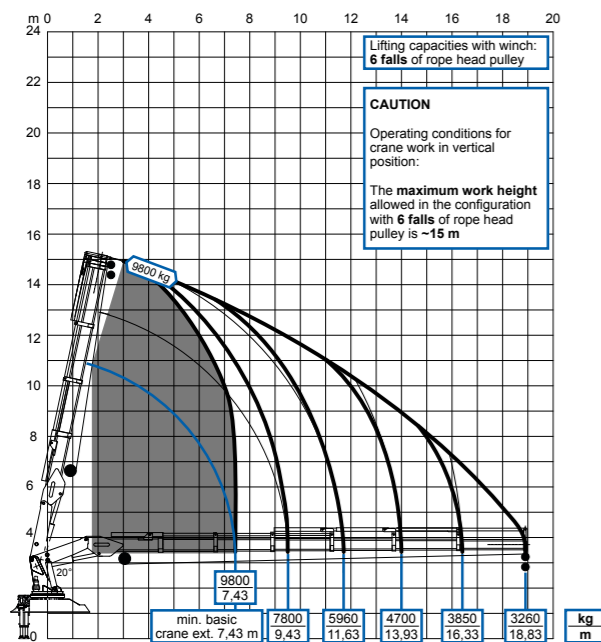
6S winch: 1900 daN



6S+ JIB 4S winch: 1900 daN



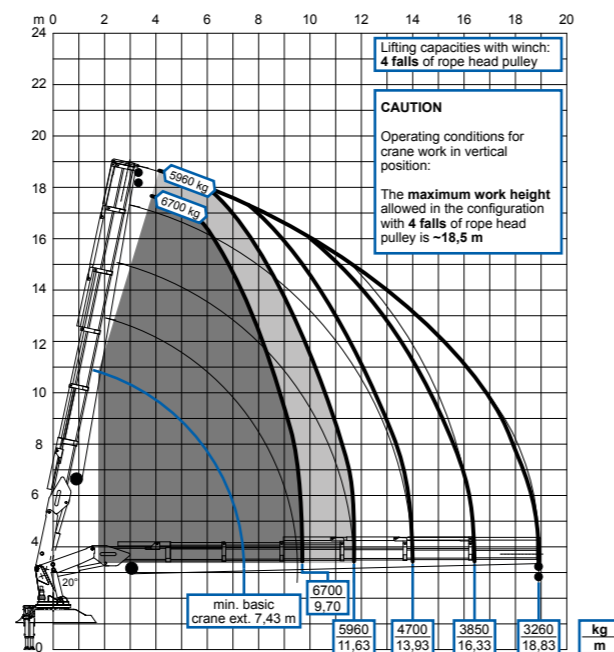
6S winch: 1900 daN



Lifting capacities with winch:  
6 falls of rope head pulley

**CAUTION**  
Operating conditions for crane work in vertical position:  
The maximum work height allowed in the configuration with 6 falls of rope head pulley is ~15 m

6S winch: 1900 daN



Lifting capacities with winch:  
4 falls of rope head pulley

**CAUTION**  
Operating conditions for crane work in vertical position:  
The maximum work height allowed in the configuration with 4 falls of rope head pulley is ~18,5 m





**TLF Makine**  
Sanayi ve Ticaret A.Ş.

**Marketing, sales and warranty**

Fevzi Çakmak Mah., 10730 Sok. No. 4/1, Karatay, TR-42050 Konya  
Mob.: +90 (532) 068 1853  
Tel.: +90 (332) 350 0 853  
Fax: +90 (332) 239 23 37

sales@tlf.com.tr



www.effer.com | www.effermarine.com | info@effer.it

Discover more about 95 TLF!

