

## 740AJ ARTICULATING BOOM LIFTS

### Platform

- 0.91m x 1.83m low mount fall arrest platform
- Rear entry with hinged mid rail
- Multiple function operation
- Full proportional drive joystick control with integral thumb steer switch
- Full proportional main boom and swing joystick control
- Multiple speed control for lower boom, telescope and platform rotate
- Selectable creep speed on drive, lift and swing functions
- 1.83 m articulating jib
- 180 degree powered platform rotator
- Platform console machine status light panel <sup>1</sup>
- Load sensing system
- AC power cable to platform

### Power & Transmission

- Deutz D2011L04 (46kw) diesel engine
- Engine distress warning / shut down system <sup>2</sup>
- Gull-wing turntable hoods
- Swing-out engine tray
- Spark arresting type muffler
- Control ADE® (Advanced Design Electronics) System
- Hydrostatic drive transmission
- Four wheel drive
- Four wheel steer / Two wheel steer / Crab steer
- Horn

### Functional Equipment & Accessories

- 144 km/h jet blast rating to ARP 1328 standard
- 3 degree tilt alarm and indicator light
- 18-625 foam filled lug tread tyres
- Fixed front axle
- Lifting / tie down lugs
- On-board 4,000W generator
- Hourmeter
- Ground control selector switch with key lock
- Platform tool tray
- 12v-DC auxilliary power



### Available Options

- 13 mm Air line to platform
- All motion alarm
- Alarm package <sup>3</sup>
- Light package <sup>4</sup>
- Head and tail lights
- Flashing amber beacon
- Plugs and Sockets
- Hostile Environment Kit <sup>5</sup>
- Hydraulic oil cooler
- Catalytic purifier muffler
- Soft Touch Platform Proximity System
- Corner storage tray

<sup>1</sup> Provides indicator lights at platform control console for system distress, low fuel, tilt light and foot switch status.

<sup>2</sup> Low oil pressure and high coolant temperature alarms with shut down enabled / disabled by analyser

<sup>3</sup> Includes all-motion alarm and flashing amber beacon.

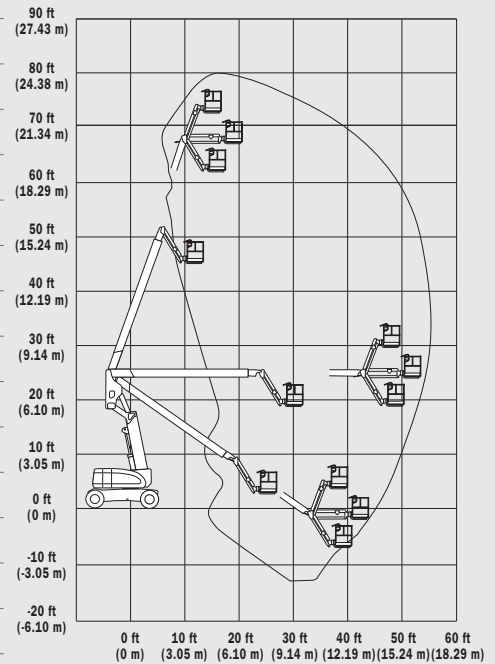
<sup>4</sup> Includes platform mounted work lights and head and tail lights

<sup>5</sup> Includes console cover, boom wipers and cylinder bellows

# 740AJ ARTICULATING BOOM LIFTS

Platform Height	22.55 m
Horizontal Outreach	15.80 m
Up and Over Height	7.64 m
Swing (continuous)	360°
Platform Capacity – Unrestricted	230 kg
Platform Rotator (Hydraulic)	180°
Jib – Overall Length	1.83 m
Jib - Range of articulation	130° (+70°/-60°)
A. Platform Size	0.91 m x 1.83 m
B. Overall Width	2.44 m
C. Tailswing (working condition)	0.76 m
D. Stowed Height	3.0 m
E. Stowed Length	11.13 m
F. Wheelbase	3.05 m
G. Ground Clearance	0.30 m
Machine weight	16,420 kg
Maximum Ground Bearing Pressure	5.9 kg/cm <sup>2</sup>
Drive Speed 4WD	4.8 km/h
Gradeability 4WD	45%
Tyres (Foam Filled)	18 - 625
Turning Radius – Inside	2.13 m
Turning Radius – Outside	4.42 m
Diesel Engine	Deutz D2011L04 46 kW *
Fuel Tank Capacity	151 L
Hydraulic System	151 L
Auxiliary Power	12V DC

\* With EGR.

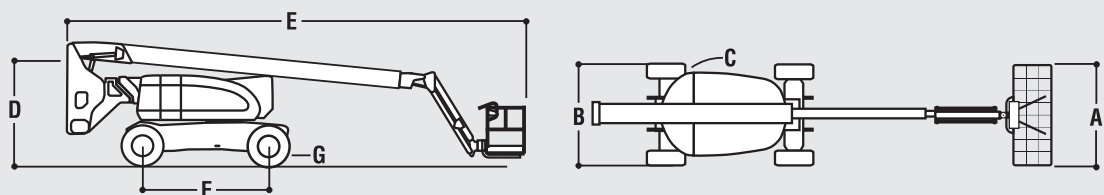


**JLG Industries, Inc. is a leading designer and manufacturer of access equipment and complementary services and attachments.**

JLG has manufacturing facilities in the United States, France, Romania, China and Belgium. Customers throughout Europe, Scandinavia, Africa and the Middle East benefit from a network of dedicated sales and service operations designed to deliver the highest levels of support.

**JLG is an Oshkosh Corporation company.**

[www.jlgeurope.com](http://www.jlgeurope.com)



JLG is continually researching and developing products and reserves the right to make modifications without prior notice. All data in this document is indicative. Certain options or country standards will increase weight. Specifications may change to meet country standards or with the addition of optional equipment.