

# SENEBOGEN



**119 kW**



**21.4 t**



**13 m**



**MAX CAB**

## 718E

Machine for fuel wood harvesting  
and landscape conservation

TIER IVf emission  
standards

# 718E Advanced. The E-Series.



1974: Timber handling machine with elevated cab

## What makes up the E-Series

- 60 years of experience in designing and constructing hydraulic material handling machines
- Uncompromisingly high performance in all areas: focus on material handling
- Technology that can be mastered: high-quality components without over-engineering
- Long product service life and high value retention

## Your top benefits:

- 1 Green Efficiency**  
Save fuel – reduce operating costs  
Work quietly – protect operator and environment
- 2 Peak performance**  
Durable mechanical systems – stressed parts optimized  
High speeds – high load capacities
- 3 Maximum operating comfort**  
Comfortable Maxcab operator cab – relaxed work  
SENCON – SENNEBOGEN Control System
- 4 Maximum safety**  
Safe entry and exit – no-slip steps  
State-of-the-art cameras – entire work area in view
- 5 Maintenance and service made easy**  
Easy fault diagnosis – central reading points  
Easy maintenance – clear labeling
- 6 Consultation and support**  
3 production sites – 2 subsidiaries  
120 sales partners – over 300 service stations







Cable yarding operation on the logging trail with harvester





# 718E The Allrounder



Cutting free of roads and forest paths, cutting gauges free



Safe and wide-reaching processing of road embankments



Gradual removal of problematic trees with low safety distances



Cable yarding operation with harvester

## The ideal solution for:

- » Landscape conservation, gardening and landscaping companies
- » Service providers for forestry and tree care
- » Producers of fuel wood, biomass, wood chips
- » Producers of mixed manure and compost
- » Municipal service provider, road construction offices
- » Water construction authorities
- » Municipal road maintenance offices
- » Sawmills, timber logistics



**1,7 t load at  
13 m reach**

Large working  
area thanks to  
telescopic boom  
with up to 13 m reach

Use in environmentally  
sensitive areas thanks  
to biodegradable oils  
and lubricants

Additional hydraulics  
for harvester attachments  
with extra high-performance  
filtration

Highest safety and ideal  
overview - elevating cab  
with 5.50 m eye-level,  
tiltable cab\*

Manifold  
attachments  
for various  
applications



High stability  
undercarriage  
with forestry  
tires, high ground  
clearance, road  
approval available

Fast loading - easy transportation, weight  
below 22 t, 3-axle flatbed trailer sufficient

\* Optional



# 718E The E-Series. At a glance.



Work	Idle		Stop
1800 ECO RPM	1400 RPM	800 RPM	0 RPM
0 s	5 s	8 s	5 min

## Four ways to save fuel

- Up to 20% savings: working in Eco Mode with reduced engine speed
- Idle automation reduces speed to 40% of operating speed
- Stop automation switches the engine off when not needed
- Optimized engine settings, reduced specific fuel consumption, state-of-the-art exhaust aftertreatment



## Quiet operation

- Consistently quiet operation thanks to decoupled engine mounts **3** and soundproofing in the doors
- Sound pressure level reduced by up to 4.5 dB; sound power level according to 2000/14/EC up to 2 dB lower than required

## High-capacity cooling

- Constant, reliable performance thanks to large-dimensioned and robust fans and coolers **4**
- Water and oil coolers with top-notch efficiency thanks to axial-piston pump and motor control and on-demand thermostatic control
- Charge-air cooler with mechanical drive





### Maximum safety

- Ideal overview thanks to elevating cab 1
- Peripheral railing\* 2
- 2 cameras to the right and rear
- Large single tires
- Emergency control (series)
- Manageable electronics - no Over-Engineering



### Smart cooler technology

- Standard features: automatic, fast and strong fan reversal for blowing out coolers and continuous cooling capacity 5
- Side-by-side coolers, easily accessible and clean cooling technology 6
- Fuel savings through optimized fan operation

### Powerful hydraulic system

- Strong pumps with power reserves
- Top efficiency thanks to large-dimensioned hydraulic valves and lines
- Extra-long change intervals of 4,000 operating hours through initial fill-up with special oil with extended service life when using SENNEBOGEN HydroClean

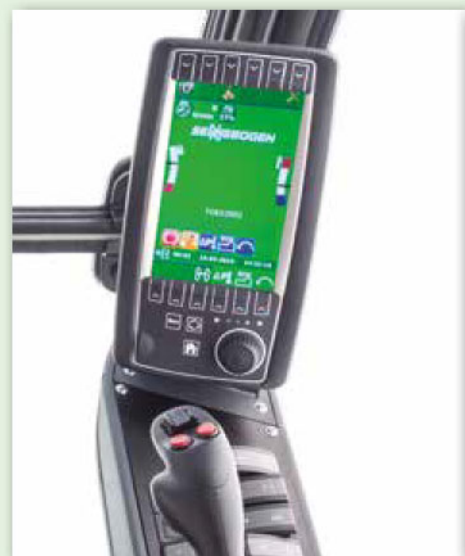
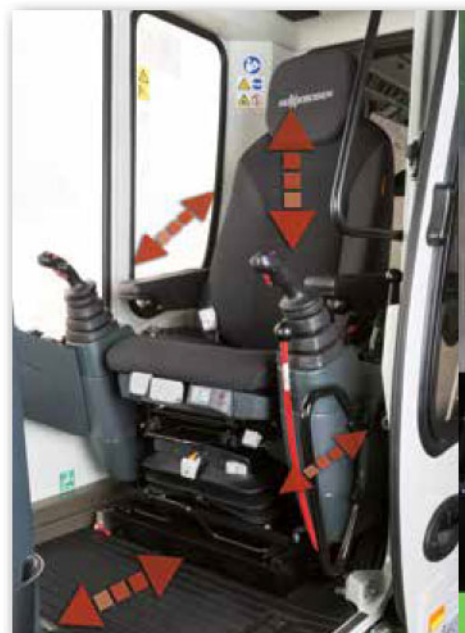
\* optional



# 718E The E-Series. Pure comfort.

## Maxcab comfort cab

- Air-suspension comfort seat with heater
- Convenient joystick control
- Joystick in seat bracket, moves with seat
- Sliding door, platform in front of cab
- Color monitor for right-side and rear-facing camera feeds
- SENNEBOGEN OptiMode: Various modes to optimize performance



## Driver comfort

- No-slip access ladders for safely accessing the machine
- Sliding door makes entering and exiting easy and safe
- Pleasant work environment thanks to low noise emissions

## Automatic climate control

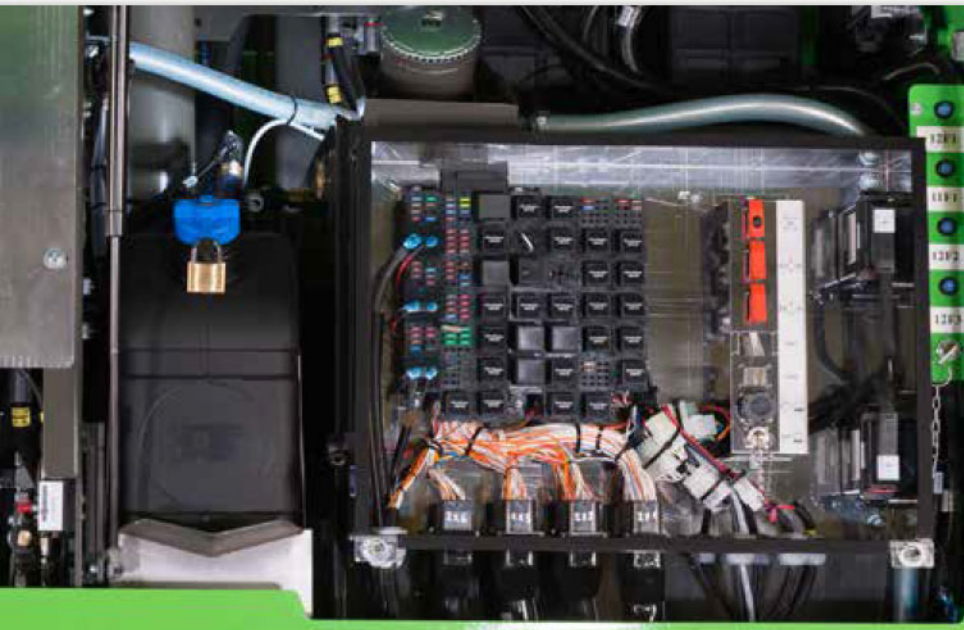
- Consistently pleasant cab climate thanks to 10 evenly distributed air vents
- Central controls make operation easy

## SENCON

- Clear menu
- Determine operating values without the need for additional instruments
- Fast troubleshooting thanks to detailed messages



# 718E Maintenance and service made easy



## Optimized for maintenance

- Fast and easy troubleshooting thanks to straightforward and clearly labeled electrical distributor
- Easy access to all service points on the machine
- Automatic central lubrication for equipment and slewing gear raceway



## HydroClean\*

- Optimal protection of hydraulic components thanks to 3 µm micro-filter
- Cleaner hydraulic oil, longer service life



## Central reading points

- Easily accessible, central reading points
- Quickly inspect entire hydraulic system



## Clear labeling

- All parts labeled with a unique part number
- Easy and reliable spare parts ordering

\* optional

# 718E Technical data, equipment

## MACHINE TYPE

Model (type) **718**

## ENGINE

Power	<b>119 kW / 160 hp at 2200 rpm</b>
Model	<b>Cummins QSB 4.5 TIER IIIa/IVf</b> Direct injection, turbo-charged, charge-air cooler, reduced emissions, EcoMode, idle automation
Cooling	Water-cooled
Air filter	Dry air filter with cyclonic pre-filter, safety element, contamination indicator
Fuel tank	<b>330 l</b>
DEF tank	<b>30 l</b>
Electr. system	<b>24 V</b>
Batteries	2 x cold-start high-performance batteries
Options	<ul style="list-style-type: none"> <li>■ Engine block heater</li> <li>■ Electric fuel pump</li> <li>■ Jump-start terminals</li> </ul>

## UPPERCARRIAGE

Design	Torsion-resistant upper frame with end shields all the way from boom linkage to counterweight for optimized force transmission, precision-crafted, steel bushings for boom bearings, lockable storage compartment, outstanding design, very low noise emissions
Central lubrication	Automatic central lubrication for equipment and slewing gear raceway
Electrical system	Central electrical distributor, battery disconnect switch
Kühlsystem	3-Kreis Kühlsystem mit großer Kühlleistung, thermostatisch geregelter Lüfterantrieb für Öl- und Wasserkühler, Lüfter-Revisierung für Reinigung
Safety	Right and rearview cameras, emergency control of main functions
Options	<ul style="list-style-type: none"> <li>■ Slewing gear brake via foot pedal</li> <li>■ Peripheral uppercarriage railing for additional safety</li> <li>■ LED lighting package</li> <li>■ Fire extinguisher</li> <li>■ Special paint finish</li> <li>■ Electric heater for hydraulic tank</li> <li>■ Low temperature package</li> <li>■ Platform with railing next to cab</li> </ul>

## HYDRAULIC SYSTEM

Load-sensing/LUDV hydraulic system for work and travel functions	
Pump type	Swashplate-type variable-displacement piston pump, load pressure-independent flow distribution for simultaneous, independent control of work functions
Pump control	Zero-stroke control, on-demand flow control – the pumps only pump as much oil as will actually be used, pressure purging, load limit sensing control
Supplemental hydraulic system	For independently driving different attachments
Operating pressure	<b>max. 350 bar</b>
Filtration	High-performance filtration with long change interval
Hydraulic tank	<b>350 l</b>
Control system	Proportional, precision hydraulic actuation of work movements, 2 hydraulic servo joysticks for the work functions, additional functions via switches and foot pedals
Safety	All hydraulic circuits secured with safety valves, hydraulic accumulator for emergency lowering of equipment and cab in the case of engine failure, pipe-fracture safety valves for stick cylinders and hoist cylinders
Options	<ul style="list-style-type: none"> <li>■ SENNEBOGEN HydroClean 3 µm hydraulic microfilter system</li> <li>■ Bio-oil – environmentally friendly</li> <li>■ ToolControl for programming the pressure/rate for up to 10 tools</li> <li>■ pressure filter for attachments</li> </ul>

## SLEWING DRIVE

Gearbox	Planetary gearbox with axial piston motor and integrated brake valves
Parking brake	Spring-loaded, hydraulically vented safety multi-disk brake
Slewing ring	Oversized slewing ring
Slewing speed	0-8 rpm, variable. Hydraulic brake valves integrated in motor ensure wear-free braking.



# 718E Technical data, equipment

## CAB **MAX** CAB

Cab type	Hydraulically elevating cab E270
Cab equipment	Sliding door, excellent ergonomics, automatic climate control, heated, air-suspension comfort seat, fresh/circulating air filter, 12 V/24 V connections, SENCON
Options	<ul style="list-style-type: none"> <li>■ Tilttable cab, 30°</li> <li>■ Auxiliary heating system with timer</li> <li>■ Active seat climatisation</li> <li>■ Joystick control</li> <li>■ Sliding window in operator door</li> <li>■ Armored-glass sunroof</li> <li>■ Polycarbonate safety side and rear panels</li> <li>■ Windshield wiper with washer for bottom windshield / glass roof panel</li> <li>■ Rolling shade for roof window and windshield</li> <li>■ Protective roof grating</li> <li>■ FOPS protective roof grating</li> <li>■ Protective front grating</li> <li>■ Radio with speakers</li> </ul>

## ATTACHMENTS

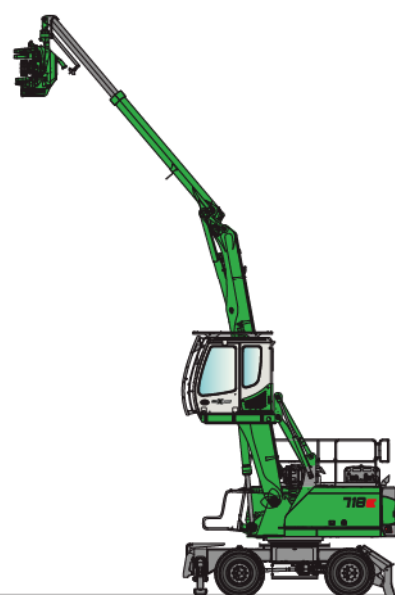
Design	Sealed and soiling-protected box design with oversized bearing points for long service life. Oversized bearing points with low-maintenance, sealed special bushings, precision-crafted
Cylinders	Special hydraulic cylinder with hydraulic end position damping, optimized kinematics for high lifting power. The material handling attachment is specifically designed for high-performance applications.
Central lubrication	Automatic central lubrication system

## UNDERCARRIAGE

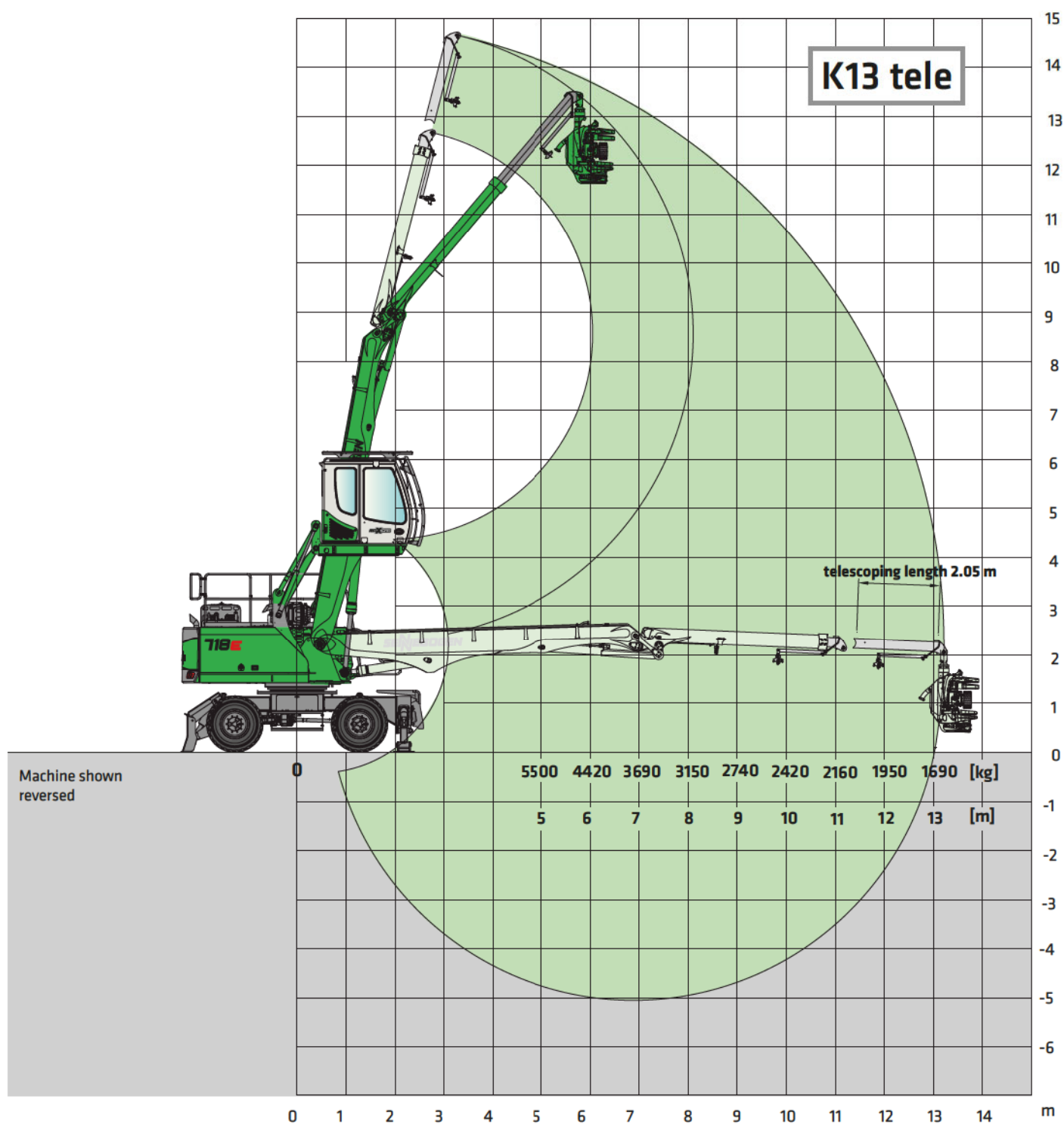
Design	Strong mobile undercarriage with 4-point outrigger or combination of stabilizer blade and outrigger (option), hydraulically locking pendulum steering axle. Pendulum axle cylinder with pipe-fracture safety valves, Individual outrigger actuation
Drive	All-wheel drive powered by a variable-displacement hydraulic motor with direct-mounted, automatically actuated brake valve and 2-stage power shift transmission. Strong planetary axles with integrated steering cylinder, 2-circuit multi-disk service brake. Automatic switch of travel direction
Parking brake	Spring-loaded multi-disk brake
Tires	600/50 - 22.5 single pneumatic tires
Speed	Stage I: <b>0-5.5 km/h</b> ; Stage II: <b>0-20 km/h</b>
Options	<ul style="list-style-type: none"> <li>■ 4-point outriggers</li> <li>■ travel drive protection</li> <li>■ preparation for trailer hitch</li> <li>■ road approval</li> </ul>

## OPERATING WEIGHT

Mass	718 M with 2-point outrigger and stabilizer blade, equipped with telescopic stick K13T <b>approx. 21,400 kg</b>
Notice	Operating weight varies by model and equipment.



# 718E Load ratings



Undercarriage MP21

Compact boom  
Dipper stick

6.5 m  
4.2 m + 2.05 tele

Cab

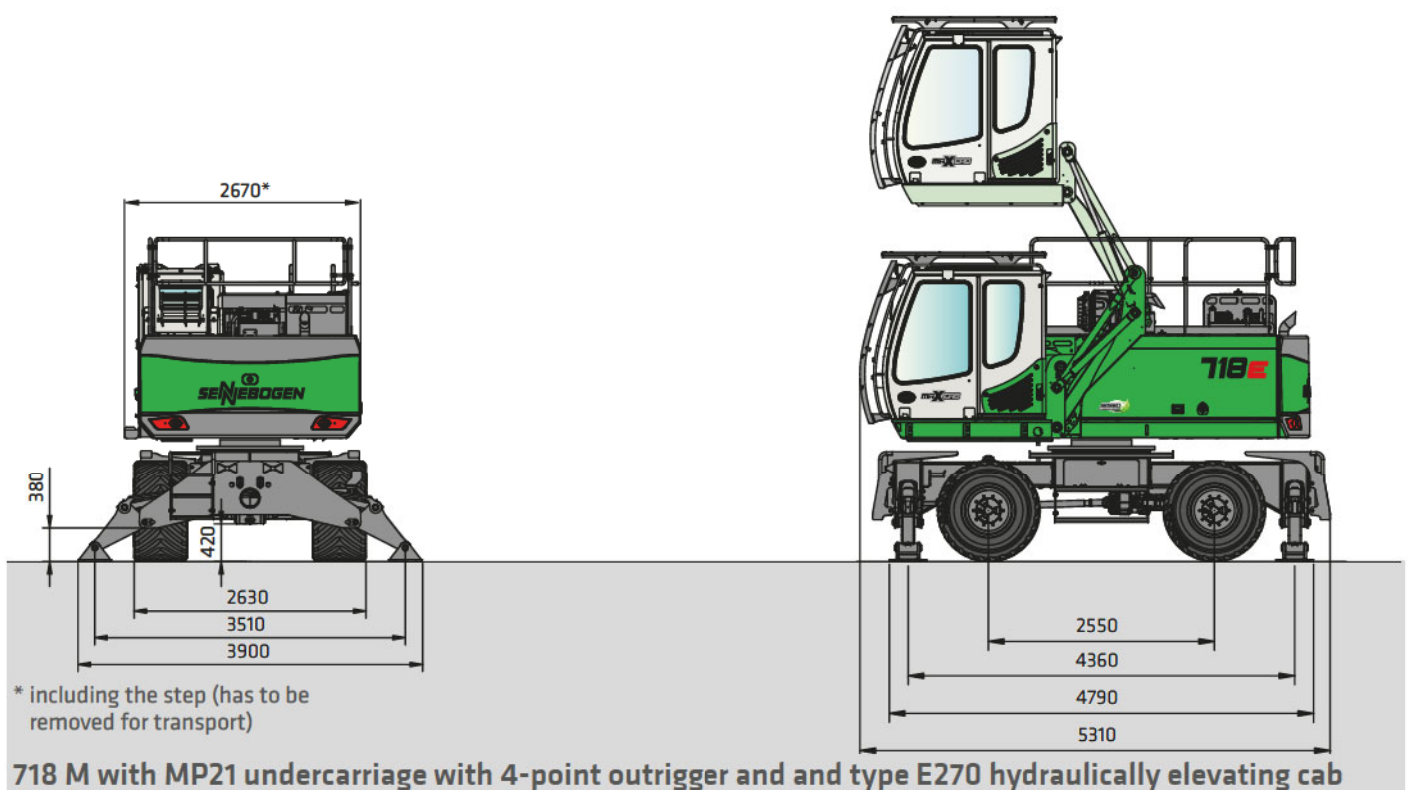
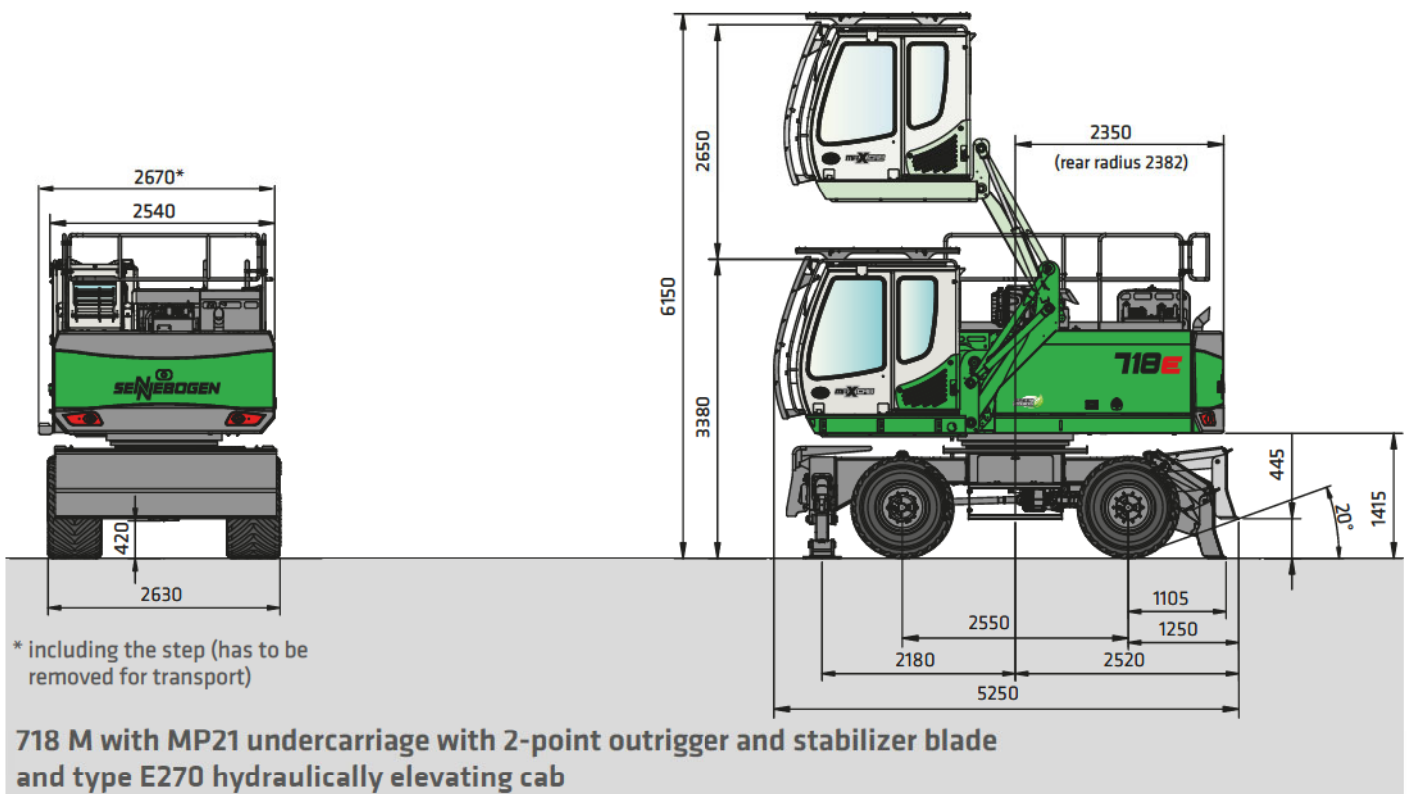
Maxcab E270,  
hydraulically elevating

All load ratings are in kilograms (kg) and apply at the end of the stick, without attachment, on solid, level ground. The specified values are 75% of the static tipping load or 87% of the hydraulic lifting force in accordance with ISO 10567. In accordance with EU standard EN 474/5, material handlers used for hoisting must be equipped with pipe fracture safety devices on the hoist cylinders and an overload warning device. Load ratings apply to a machine with outrigger and for 360° slewing.

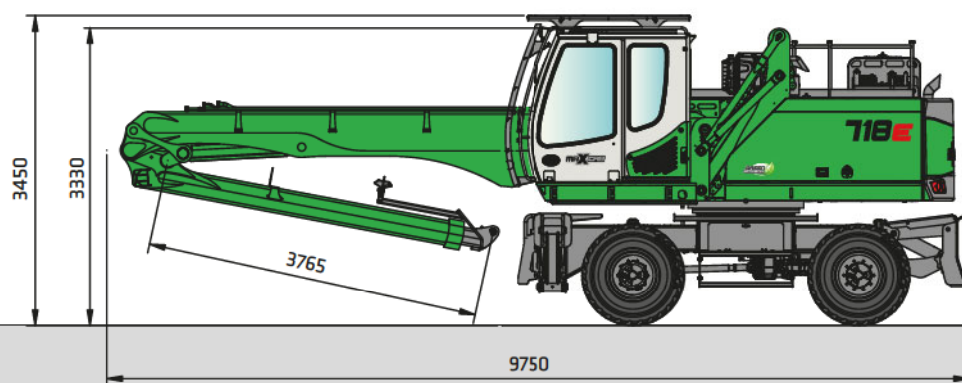


# 718E Transport dimensions

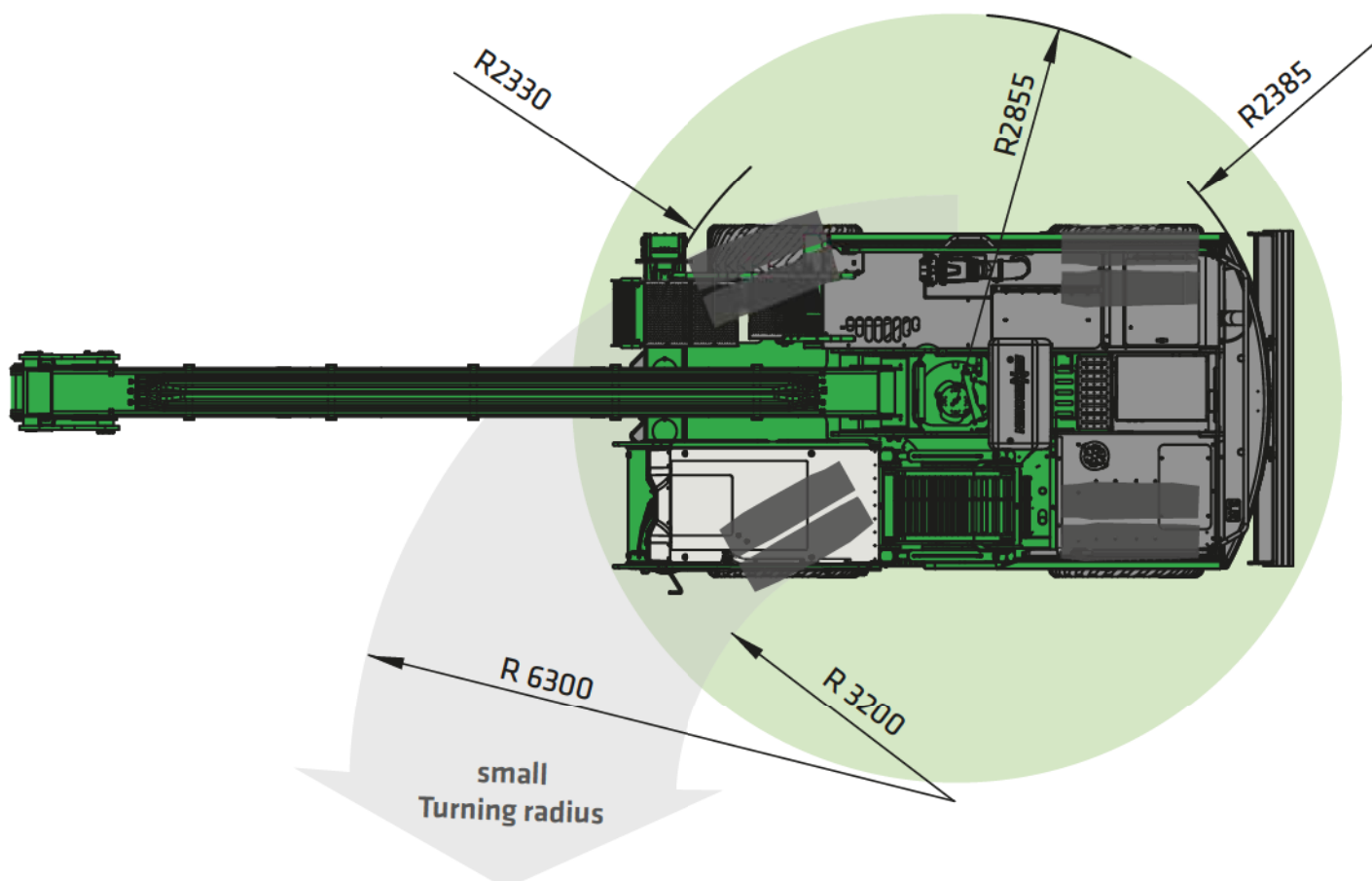
Transport width 2.630 mm



# 718E Dimensions



718 M with 6.5 m K13 compact boom and 4.2 m dipper stick + 2.05 m telescope



718 M Slewing radius / Turning radius



# 718E One machine - manifold applications



Loading of round timber with timber grab



Problematic tree felling with grab saw in Singapore



Problematic tree felling with grab saw in Singapore

Note: Those pictures show job applications with different attachments. Those attachments and their controls are not included in the scope of supply. On request, the SENNEBOGEN Vertriebs GmbH & Co KG offers a project-related implementation.



# 718E One machine - manifold applications



Embankment care with mulching attachment



Container loading with orange peel grab



Embankment care with cutting head



Embankment care with cutting head



Embankment care with grab saw

16 Note: Those pictures show job applications with different attachments. Those attachments and their controls are not included in the scope of supply. On request, the SENNEBOGEN Vertriebs GmbH & Co KG offers a project-related implementation.



# 718E One machine - manifold applications



Problematic tree felling with grab saw



Embankment care with mulching attachment



Embankment care along the autobahn

Note: Those pictures show job applications with different attachments. Those attachments and their controls are not included in the scope of supply. On request, the SENNEBOGEN Vertriebs GmbH & Co KG offers a project-related implementation.



# 718E One machine - manifold applications



Embankment care with mulching attachment



Cable yarding operation with harvester

18 Note: Those pictures show job applications with different attachments. Those attachments and their controls are not included in the scope of supply. On request, the SENNEBOGEN Vertriebs GmbH & Co KG offers a project-related implementation.



# 718E One machine - manifold applications



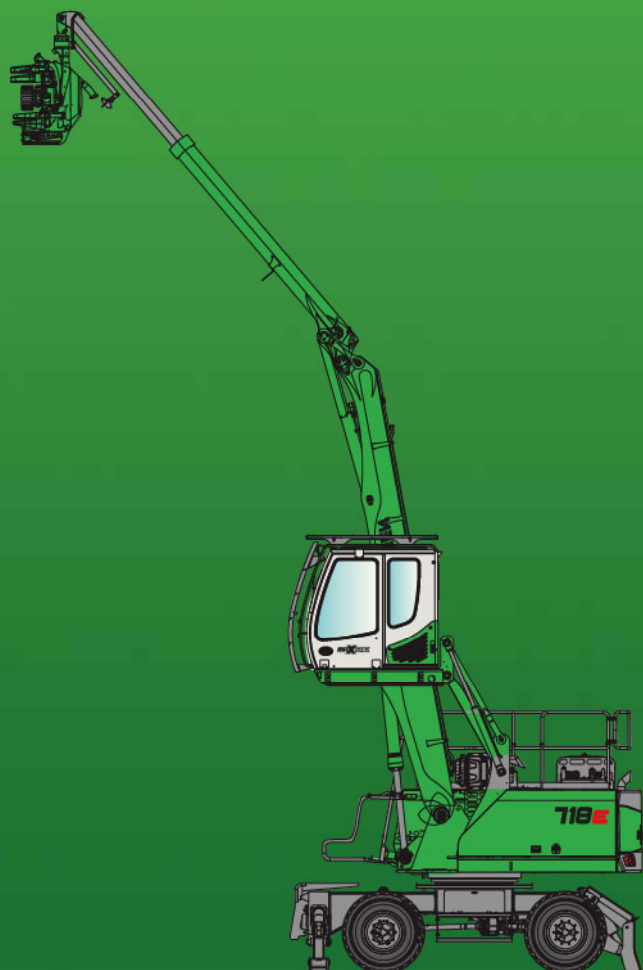
Transportation with Unimog and flatbed trailer



Transport via truck

Note: Those pictures show job applications with different attachments. Those attachments and their controls are not included in the scope of supply. On request, the SENNEBOGEN Vertriebs GmbH & Co KG offers a project-related implementation.

# 718E



This catalog describes machine models, scopes of equipment of individual models, and configuration options (standard equipment and optional equipment) of the machines supplied by SENNEBOGEN Maschinenfabrik. Machine illustrations can contain optional equipment and supplemental equipment. Actual equipment may vary depending on the country to which the machines are delivered, especially in regard to standard and optional equipment.

All product designations used may be trademarks of SENNEBOGEN Maschinenfabrik GmbH or other supplying companies, and any use by third parties for their own purposes may violate the rights of the owners.

Please contact your local SENNEBOGEN sales partner for information concerning the equipment variants offered. Requested performance characteristics are only binding if they are expressly stipulated upon conclusion of the contract. Delivery options and technical features are subject to change. Errors and omissions excepted. Equipment is subject to change, and rights of advancement are reserved.

© SENNEBOGEN Maschinenfabrik GmbH, Straubing/Germany. Reproduction in whole or in part only with written consent of SENNEBOGEN Maschinenfabrik GmbH, Straubing, Germany.


## SENNEBOGEN

**SENNEBOGEN**  
**Maschinenfabrik GmbH**  
Sennebogenstrasse 10  
94315 Straubing, Germany

Tel. +49 9421 540-144/146  
Fax +49 9421 43 882  
[marketing@sennebogen.de](mailto:marketing@sennebogen.de)

Order no. / Item no. 195281  
718M-E-041615-051720

GO FOR GREEN

 [www.sennebogen.com](http://www.sennebogen.com)