

# ***SPECIALTY SERIES***

75 – 155 HORSEPOWER UTILITY TRACTORS



**JOHN DEERE**

An aerial photograph of a John Deere tractor driving through a vast orchard with rows of trees. The tractor is green and yellow, and a person is visible in the driver's seat. The orchard is dense with green trees, and the rows stretch far into the distance under a hazy sky.

*A perfect fit for  
the work you do.*



*SPECIALTY SERIES 75 – 155 HORSEPOWER UTILITY TRACTORS*



5100MH  
Hi-Crop Tractor  
P. 16

***JOHN DEERE SPECIALTY TRACTORS:***  
*MADE TO FIT YOUR OPERATIONS NEEDS*





**5090GN**  
Narrow Tractor  
P. 4



**5090EL**  
Low Tractor  
P. 10

### Whether you ...

- Work with sensitive fruit and vegetable crops
- Dodge poultry house feeders or low-hanging branches
- Squeeze between rows in the orchard.

**You likely need a nimble yet powerful tractor to be productive from day to day.**

That's why farmers from coast to coast rely on Specialty Tractors from John Deere. From width and height to horsepower and features, every specialty model is designed to accommodate unique agricultural operations – including the one you manage.

As you go through this brochure, you'll quickly discover how John Deere specialty tractors answer the call of farmers across the country.

### NARROW TRACTORS

5GV, 5GN Narrow ..... 4

### LOW-PROFILE TRACTORS

5GL ..... 8

5EL ..... 10

5ML ..... 14

### HI-CROP TRACTORS

5MH ..... 16

6RH ..... 18

Specifications ..... 20

Frontier / Loaders / Attachments ..... 24

Dealership / PowerGard™ ..... 27

## THE 5GV AND 5GN ... NARROW, NIMBLE AND READY TO GET IT DONE

- 75, 90 and 100 horsepower engines
- Working widths as narrow as 39 inches (0.3048 m)
- Turning radius of 11.9 feet (3.6 m)
- 24F/12R PowrReverser™
- Open station or cab; MFWD

5GV and 5GN Series are a natural fit for narrow rows implemented to conserve acreage. In addition, they are a force around the farm for the most demanding work. The 5GV features an ultra narrow design to get you into the tightest spaces. Having the narrowest tire configuration means working narrow row widths is no problem for the 5GV. It is available with 70 or 90 horsepower.

The 5GN is wider but still narrow and nimble and ranges from 75-100 horsepower.







## *BRING THE PRODUCTIVITY ... AND THE ECONOMY*

The 5G Series features engines that deliver excellent fuel efficiency and overall fluid economy while still providing plenty of power, torque and lugging ability for tougher jobs.

The 90 and 100 hp engines feature an optional Intelligent Power Management System (IPM) that provides the punch you need for challenging PTO and transport applications. Get a 5.5% power boost on the 90hp 5G's or 5GN/GV and a 9.9% power boost on the 100 hp 5G.

The 24F/12R PowrReverser™ offers variable working speeds – as well as a creeper transmission – and is suited for work requiring frequent directional changes. It also includes a hi-lo and de-clutch button for quick, efficient transmission and shifting management.

**Slip into rows** as narrow as 39 inches  
(0.9906 m) with the 5GV.



## SQUEEZE THROUGH NARROW ROWS WITHOUT FEELING THE SQUEEZE YOURSELF

First-time and experienced operators alike will appreciate the cab on the 5GN, which provides an efficient workspace along with intuitive, easy-to-reach controls. Doors on both sides coincides with impressive all-around visibility. And with a climate control system designed for weather extremes, you'll remain comfortable regardless of the conditions at hand.



**The climate control system** provides slight pressurization to the cab to limit intake of dust and other elements.



**Intuitive and convenient controls** can help reduce fatigue and operator errors while improving efficiency.





## SHOW YOUR OPERATION WHO'S BOSS

You ready to put some power down? With the 5G Series, it's a done deal.

Both the 5GV and 5GN's come with an open-center hydraulic system that delivers a chore-mastering 25.5 gpm (96 l/min) of hydraulic power to your workday. That means you can handle heavy drawbar or 3-point mounted implements, as well as tough terrain, without slowing down.

Need even more muscle? No problem. Equip the 5GN with an optional external hydraulic lift cylinder to boost rear lift to 4,400 pounds (1995 kg).



**Economy meets performance:** The economy PTO reduces engine RPM by 15 percent, cutting fuel consumption and wear and tear on your engine when doing chores such as rotary cutting and rotary tilling.

**Go the distance:** With an oil change interval of 500 hours and a fuel tank capacity of 19.3 gallons (73 L), you'll stay on the job longer. An optional 7.4 gallon (28 L) external tank is also available on the 5090GN and 5100GN models so you can maximize your workday.



5GL LOW-PROFILE SPECIALTY SERIES

# CLEAR THE CANOPY

STANDING 53.5-IN. TALL AND 53-IN. WIDE, THIS HIGH PERFORMER KEEPS A LOW PROFILE WHILE PROTECTING YOUR HIGH VALUE FRUIT.

- 75 Engine HP, 61 PTO HP
- 24F/12R PowrReverser™ transmission
- Standard MFWD
- DeClutch and Hi-Lo selector

5075GL Low-Profile







The 5075GL hydraulic system offers outstanding performance with standard pump rated output of 25.5 gpm (96.5 L/min) or 33.4 gpm (126.4 L/min) with optional third pump. Includes two rear selective control valves with choice to add two more SCVs.

The 5075GL is proof that good things do, in fact, come in small packages. Its narrow, low-profile combined with a powerful 75 HP engine and 61 HP PTO make this machine the perfect fit for the grueling demands of orchards, vineyards and other operations that demand height and width requirements.

With its impressively small stature of 53.5-in. (1.3589 m) tall and less than 53-in. (1.3462 m) wide - the 5075GL has excellent maneuverability and hydraulic power and this machine easily navigates rows and clears those small, tight spaces when trees are loaded with fruit, protecting the crop from potential damage.

But don't let the small size fool you: the 5075GL was built for power. Whether you're flail mowing, spraying, pushing harvest bins or trailering, this machine provides the engine and PTO horsepower you need to get the job done.





**5EL** LOW-PROFILE SPECIALTY SERIES

## JOHN DEERE 5090EL LOW-PROFILE SPECIALTY TRACTOR

John Deere is raising the bar on low-profile performance with the 5090EL Specialty Tractor. Coming in at a productively low 72 inches (1.8288 m) of overall tractor height – and packing 90 engine horsepower – the 5090EL can even knock tall jobs down to size. And it's just the right fit for the poultry farmer – low enough to glide under tree limbs or raised poultry feeders and powerful enough to drive heavy-duty implements like poultry house cleaners.

Outstanding features are what really make the 5090EL shine. The bright-view control panel offers superior clarity, while PowrReverser™ transmission allows you to change direction with a stroke of a finger. But what truly defines this machine is versatility, meaning you can count on the 5090EL – beyond poultry operations – to tackle all kinds of chores around the farm.











SEL LOW-PROFILE SPECIALTY SERIES

## POWERFUL YET EFFICIENT

No matter the requirements, the John Deere PowerTech™ 90 horsepower (75 PTO) engine on the 5090EL lets you manage a wide range of implements without compromising efficiency by offering needed torque with an additional 2% power bulge. The 5090EL also features an open center hydraulic system with a rated pump output of 22.5 gpm (85.1 L/min) along with two standard rear selective control valves (SCV's). You can increase your capabilities by optioning up to three rear SCV's and up to three mid SCVs with joystick control. A factory-installed horizontal side exhaust is also included.





A

#### **A. THE CHOICE IS YOURS**

The 5090EL offers you the power of choice on several features. When it comes to seats, you can choose either the standard 15-degree swivel mechanical seat or the low-profile seat. As for tires, your options include standard industrial R4 or agricultural R1 – both of which can be configured to provide an additional 3 inches of tractor height and ground clearance.

#### **B. GREATER COMMAND**

Equipped with a right-hand console, you will comfortably sit in command with advanced, user-friendly controls. Additionally, optional front and rear LED work lights enhance productivity and reduce operator fatigue in low-light conditions.

#### **C. COST OF OWNERSHIP**

Manufactured to protect your wallet for the long term, the 5090EL offers engineering excellence that provides superior durability and functionality along with legendary design and performance.



B



C



5ML LOW-PROFILE SPECIALTY SERIES

# SPECIAL IS OUR SPECIALTY ... THE 5ML

What makes 5ML Specialty Tractors so special? For starters, they're designed to handle all your low-clearance applications. And even better is the reduced crop damage you'll experience thanks to the 5MLs low profile and superior maneuverability that enable you to operate below produce, between trees, and in tight spots. Of course you'll also have plenty of horsepower on hand along with a comfortable, ergonomic operator's station to work from.





#### A. TRANSMISSIONS

The 5ML offers you not one but three transmission choices – the PowrReverser™, PowrQuad™ or the Power8. All options enable you to do heavy loader work and operate at lower speeds. PowrQuad features a left-hand reverser for clutch-free forward and reverse directional changes; plus a convenient, right-hand declutch button that lets you easily change ranges.

#### B. HORSEPOWER

With horsepower ranging from 100-125, John Deere PowerTech™ engines provide plenty of brawn to operate larger-sized implements to help you accomplish more in less time.

#### C. INCREASED HITCH CAPACITY

Along with greater horsepower, the increased hitch capacity of the 5ML (optional on 100 and 115 horsepower models) helps maintain the load of your bigger implements. A larger hitch cylinder (up to 80mm) elevates your total capacity to 7,868 pounds – making this tractor even more capable around the farm.

#### D. HYDRAULIC SYSTEMS

The 5ML Series features open center hydraulics on the 5100ML and 5115ML with a standard pump rated output of 24.7 gpm (93.5 L/min), while the 5125ML comes equipped with a standard pressure flow compensated closed center hydraulic system with 31gpm (117 L/min) rated output. Closed center is optional on 5100ML/5115ML. All models provide three selective control valves.

#### E. COOLING PACKAGE

John Deere designed the 5ML with superior cooling packages to minimize engine heat. In addition to reducing heat and keeping the tractor cooler, it also extends the life of your components and reduces fluid consumption – keeping your machine in tip-top shape for years to come.

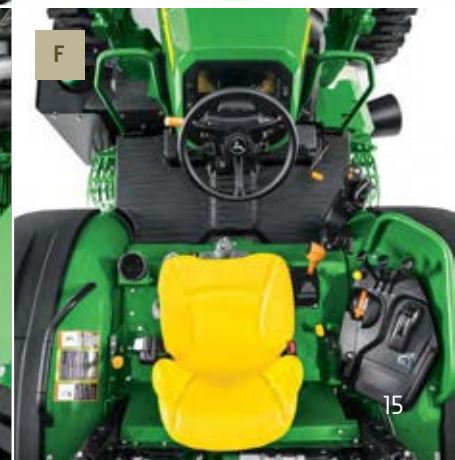
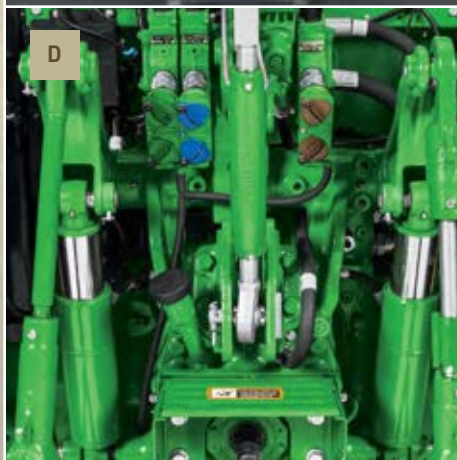
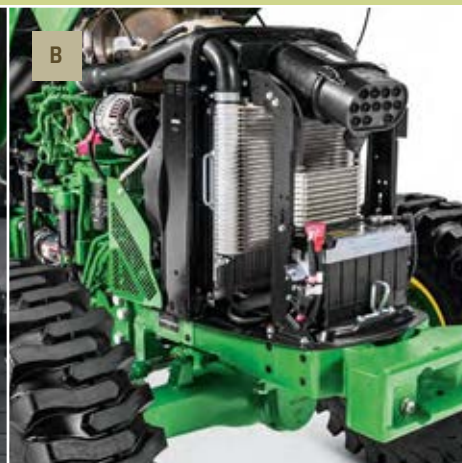
#### F. UPGRADED OPERATOR STATION

Performance is important, but so is comfort. That's where the isolated operator station comes in with its relaxing, low-profile seat to help ease you into the workday. Complemented by a sloping hood, you'll also realize the benefit of superior visibility. And let's not overlook improved floor mats that reduce engine vibration for a quieter ride.

## TAKE IT TO THE NEXT LEVEL WITH THE 5ML

What really stand out on the 5ML's are highest-in-class horsepower, optional pressure flow compensated (PFC) hydraulic system and advanced cooling package. Of course, you benefit from other improvements too, like the larger fuel tank to limit trips to the pump, and the field-installed JDLink™\* for remote monitoring to enhance performance and productivity. Take a good, long look at the 5ML from John Deere for a special tractor experience that's well suited for your nut, tree fruit or other specialty crop operation.

\* Activation/subscription required. Some additional accessories and/or components may be required. JDLink requires a cellular data connection to transfer information from machine to JDLink website. Consult your local John Deere Dealer for coverage availability.





## GETTING THE JOB DONE RIGHT IS ALL IN A DAY'S WORK

- 100 engine horsepower
- Over 24.8 inches (629 mm) of front-axle clearance
- Open station or cab
- Cooling system designed for adverse conditions

Success starts with a high-crop tractor that delivers top performance. And with the 5MH, that's what you'll get. With the ability to have 3 rear and 3 mid SCVs a total of 18.4 gpm (69.6 l/pm) of hydraulic flow and up to 5,954 pounds (2700 kg) of hitch lift capacity with the heavy duty hitch lift cylinders is delivered. For the working speeds you need, the 5MH comes with 16F/16R PowrReverser with creeper – featuring speeds as low as .17 mph (.27 km/h) in low – and synchronized shifting between B, C and D ranges.



Drop axle helps put you  
above sensitive crops.







## *ELEVATE COMFORT*

The premium cab option available on the 5MH offers you a fully enclosed operator-friendly environment along with a host of creature comforts. For your listening pleasure, you'll enjoy a Bluetooth®/ Satellite ready factory-installed Bosch® deluxe radio that features an impressive sound package with two 4" x 6" coaxial speakers and sub-woofer. Also included are a USB port and auxiliary cord connection for personal electronic devices. Other nice touches to the premium cab are a rear windshield wiper, loader view window, multiple heating/cooling vents, and a rear floor mat.

**Working front axle clearance**  
over 24.8 inches (629 mm)



6RH Specialty SERIES

## THE ULTIMATE LEVEL OF HIGH-CROP COMFORT AND PERFORMANCE

- 155 engine horsepower Final Tier 4 engine
- Over 25 inches (635 mm) of front axle clearance
- Premium ComfortView™ Cab
- 30 gpm (113 l/pm) of hydraulic flow

If your high-value crops require long days in the field, the 6RH provides both muscle and comfort. Along with the 6-cylinder, John Deere Power-Tech engine, the 6RH features common rail fuel injection and variable geometry turbochargers to provide nearly instant throttle response. The engine control unit checks power demands 100 times each second, adjusting automatically to your conditions. And a power boost system is on standby, ready to give you a boost of 40 horsepower when you need it.





# START AND END YOUR DAY IN COMPLETE COMFORT

## HOT AND HUMID SUGAR CANE FIELDS? COLD MORNINGS WORKING OVER STRAWBERRIES?

Don't worry ... the 6RH has everything you need to go the distance.

Not only will you have the performance to handle big days, you'll be riding high in corner office comfort. Slim corner posts, panorama roof, lower rear fenders and a redesigned hydraulic stack mean great visibility, too. See even more behind you with the CommandARM™ option, which offers 30 degrees of right hand seat swivel.

Plus, with the user-friendly controls and features like tilt and telescoping wheel, fully-adjustable air ride seat and automotive gauges, you'll be in prime position ... one you can comfortably stay in until the job is done.

Several transmission options help you gear up for maximizing productivity, including a PowrQuad PLUS™ transmission that combines the control of the IVT with the economy of an all-mechanical transmission.

Working front axle height  
over 25 inches (635) mm

Turn up the comfort with Hydraulic Cab Suspension Plus – with adjustable settings using the CommandCenter – which automatically levels with load changes and braking forces.



A. Big days? No problem ... the 6RH will rise to the challenge no matter the weather or the chore.

B. Greater than two feet of front axle clearance is more than enough for raised beds or hills.

C. Rear drop axles make the 6155RH a true Hi-Crop tractor. Drop axles can accommodate tread settings from 60 to 88 inches (152 to 224 cm).



JOHN DEERE Specialty SERIES

## NARROW TRACTORS

MODELS	5075GV	5090GV	5075GN	5090GN	5100GN
<b>ENGINE</b>					
Aspiration	Turbocharged	Turbocharged	Turbocharged	Turbocharged	Turbocharged
Cylinders/Displacement, cu. in. (L)	4/206.7 (3.4)	4/206.7 (3.4)	4/206.7 (3.4)	4/206.7 (3.4)	4/206.7 (3.4)
<b>FUEL TANK CAPACITY, US GAL. (L) (OPEN; CAB)</b>					
Standard	22.7 (86)	19.3 (73)	22.7 (86)	19.3 (73)	19.3 (73)
Optional	N/A	N/A	30.1 (114)	26.7 (101)	26.7 (101)
<b>TRANSMISSION</b>					
Opt. Transmission; Forward/Reverse	24F/12R PowrReverser	24F/12R PowrReverser	24F/12R PowrReverser	24F/12R PowrReverser	24F/12R PowrReverser
Clutch; Wet/Dry	wet (24F/12R PowrReverser)	wet (24F/12R PowrReverser)	wet (24F/12R PowrReverser)	wet (24F/12R PowrReverser)	wet (24F/12R PowrReverser)
<b>PTO (POWER TAKE-OFF)</b>					
Standard (shiftable)	Independent 540/ 540 Economy	Independent 540/ 540 Economy	Independent 540/ 540 Economy	Independent 540/ 540 Economy	Independent 540/ 540 Economy
PTO Actuation - Standard/Optn	Mechanical/Electrohydraulic	Mechanical/Electrohydraulic	Mechanical/Electrohydraulic	Mechanical/Electrohydraulic	Mechanical/Electrohydraulic
<b>HYDRAULICS</b>					
Type	Open Center	Open Center	Open Center	Open Center	Open Center
Pump Rated Output, GPM (L/min.) Standard/Optional	25.6 (97)/33.3 (126)	25.6 (97)/33.3 (126)	25.6 (97)/33.3 (126)	25.6 (97)/33.3 (126)	25.6 (97)/33.3 (126)
Rated Flow @ One SCV, GPM (L/min.)	11.6 (43.9) 17.6gpm	11.6 (43.9) 17.6gpm	11.6 (43.9) 17.6gpm	11.6 (43.9) 17.6gpm	11.6 (43.9) 17.6gpm
Remote Control Valves Available	2 std. (up to 4 opt.)	2 std. (up to 4 opt.)	2 std. (up to 4 opt.)	2 std. (up to 4 opt.)	2 std. (up to 4 opt.)
Hitch Category (SAE Designation)	1/1N	1/1N	2/1	2/1	2/1
Hitch Lift Cap. lb (kg) @24 in. Bhnd Lift Pt. (ASAE)	3,593 (1630)	3,593 (1630)	3,593 (1630)	3,593 (1630)	3,593 (1630)
<b>OPEN OPERATOR STATION (Rollover Protective Structure, OOS)</b>					
Rigid - Foldable - Telescopic	Foldable, 2-Post	Foldable, 2-Post	Foldable, 2-Post	Foldable, 2-Post	Foldable, 2-Post
<b>CAB</b>					
Seat Suspension System	Mechanical (Opt. Air Ride)	Mechanical (Opt. Air Ride)	Mechanical (Opt. Air Ride)	Mechanical (Opt. Air Ride)	Mechanical (Opt. Air Ride)
<b>MFWD DIMENSIONS</b>					
Wheelbase, in. (mm)	82.6 (2,098)	82.6 (2,098)	82.6 (2,098)	82.6 (2,098)	82.6 (2,098)
Minimum Rear Working Width, in. (mm)	39 (991)	39 (991)	49.5 (1,257)	49.5 (1,257)	49.5 (1,257)
Front Axle Clearance, in. (mm) min - max	8.9 - 10.5 (227 - 267)	8.9 - 10.5 (227 - 267)	10 - 11.4 (254 - 289)	10 - 11.4 (254 - 289)	10 - 11.4 (254 - 289)
Approx. Ship Wgt, lb (kg) Open; Cab	5,578 (2,530); 6,052 (2,745)	5,578 (2,530); 6,052 (2,745)	5,864 (2,660); 6,559 (2,975)	5,864 (2,660); 6,559 (2,975)	5,864 (2,660); 6,559 (2,975)

\*Product features are based on published information at the time of publication and are subject to change without notice. All trademarked terms, including John Deere, the leaping deer symbol and the colors green and yellow used herein are the property of Deere & Company, unless otherwise noted. Availability of products, product features, and other content on this site may vary by model and geographic region. Engine horsepower and torque information for non-Deere engines are provided by the engine manufacturer for comparison purposes only. Actual operating horsepower and torque will be less. Refer to the engine manufacturer's Web site for additional information. Copyright © 1994-2018 Deere & Company. All Rights Reserved.





# LOW-PROFILE TRACTORS

MODELS	5090EL	5075GL	5100ML	5115ML	5125ML
<b>CONFIGURATIONS AVAILABLE</b> Key: Standard = ●   Option = ■					
Low Profile Open Station	●	●	●	●	●
<b>ENGINE</b>					
Type	4 cylinder: 4.5L 276 cu in.	4-cylinder, turbocharged	4-cylinder turbocharged	4-cylinder turbocharged	4-cylinder turbocharged
Rated Engine Power HP (kW)*	90 (67.1) @ 2,400 rpm	75 (56) @ 2,300 rpm	99 (73) @ 2,200 rpm**	99 (73) @ 2,200 rpm**	123.2 (91.9) @ 2,200 rpm
Rated PTO power HP (kW)	75 (52.2) @ 2,400 rpm	61 (45.5) @ 2,300 rpm	85 (63) @ 2,100 rpm**†	114 (85) @ 2,200 rpm**†	115 (85.7) @ 2,100 rpm
Fuel capacity, US gal (L)	29.7 (112.6)	19.3 (73.1)	30 (113.5)	30 (113.5)	38 (143.8)
<b>TRANSMISSION</b>					
Base equipment	12F/12R PowrReverser	24F/12R PowrReverser	16F/16R PowrReverser	16F/16R PowrReverser	16F/16R PowrQuad
Optional transmissions	24F/12R PowrReverser	--	16F/16R PowrQuad	16F/16R PowrQuad	16F/16R PowrQuad with creeper
Optional transmissions	---	--	32F/16R Power8 Transmission	32F/16R Power8 Transmission	32F/16R Power8 Transmission
Creeper option available	No	Yes	Yes	Yes	Yes
Drive	MFWD	MFWD	MFWD	MFWD	MFWD
On-the-go shift	Partial	Partial	Optional	Optional	Yes
Clutch type	Wet	Wet	Wet	Wet	Wet
<b>PTO</b>					
Type	Standard: 540/540E Optional: 540/1000	Independent 540/540E	Standard: 540/540E Optional: 540/540E/1000	Standard: 540/540E Optional: 540/540E/1000	Independent 540/540E/1000
Actuation	Electrohydraulic	Mechanical/Electrohydraulic	Electrohydraulic	Electrohydraulic	Electrohydraulic
<b>HYDRAULICS</b>					
Type: Base/Option	Open Center	Open Center	Open Center/PFC HYD system	Open Center/PFC HYD system	Pressure and Flow Compensated (PFC) Closed Center
Pump rated output GPM (L/min) Base/Option	22.5 (85.1 GPM)	25.6 (97)/33.3 (126)	24.7 (94)/31 (117)	24.7 (94)/31 (117)	31 (117)
SCVs, Base/Option	2 up to 3	2 up to 3	3	3	3
Hitch category, SAE	2	1/2	2	2	2
Lift capacity 24" bhnd lift lb. (kg)	3,213 (1,457)	5,620 (2,549)	5,159 (2,340)	5,159 (2,340)	6,975 (3,164)
Opt. Lift capacity 24" bhnd lift lb. (kg)	NA	NA	5,954 (2,700)	5,954 (2,700)	7,868 (3,569)
<b>DIMENSIONS</b>					
Wheelbase, in (mm)	92.5 (2,350)	91.6 (2,074)	92.5 (2,350)	92.5 (2,350)	92.5 (2,350)
Minimum width (mm)	83.6 (2,123)	53 (1,346)	51.9 (1,319)	51.9 (1,319)	51.9 (1,319)
Height to top of ROPS, in. (mm)	90 (2,286)	96.73 (2,457)	89 (2,260)	89 (2,260)	89 (2,260)
Height when ROPS are folded (mm)	68 (1,727)	53.5 (1,359)	68 (1,727)	68 (1,727)	68 (1,727)
MFWD front axle grd clearance (in)	12.6 (320)	7 (180)	NA	NA	NA
Turning radius (ft)	12.1 (3.68)	11.25 ft. (3.43)	11 ft. (3.35)	11 ft. (3.35)	11 ft. (3.35)
Average standard weight, MFWD	7,055 lb (3,200 kg)	5,886 lb (2,670 kg)	8,300 lb (3,764 kg)	8,300 lb (3,764 kg)	8740 lb (3,975kg)

\*Manufacturer's estimate of power (ISO) per 97/68/EC. Power output is within + or - 5% at standard SAE J 1995 and ISO3046. \*\*Horsepower at rated speed effective Spring 2012. †PTO horsepower will vary based on tractor configuration.  
 - All specifications subject to change. See dealer for details. ‡The 16/16 PowrQuad is the only transmission available on the 6M Low Profile Orchard configuration.



JOHN DEERE Specialty SERIES

## HIGH-CROP TRACTORS

MODELS	5100MH	6155RH HI-CROP
<b>CONFIGURATIONS AVAILABLE</b> Key: Standard = ●   Option = ■		
Cab	■	●
Open Station	●	NA
<b>ENGINE</b>		
Type	4-cyl turbocharged	6-cylinder turbocharged
Rated Engine Power HP (kw)*	100 (74) @ 2,200 rpm**	155 (114) @ 2,100 rpm**
Rated PTO Power HP (Kw)	85 (63) @ 2,100 rpm**†	120 (90) @ 2,100 rpm**†
Fuel capacity, US gal (L), OOS; cab	37 (140); 37 (140) cab	94 (355)
<b>TRANSMISSION</b>		
Base equipment	16/16 PowReverser w/creeper	PowrQuad Plus 16/16 (19 MPH/30 KMH)
Drive	MFWD	MFWD
On-the-go shift	Partial	Yes
Clutch type	Wet	Wet
<b>PTO</b>		
Type	Independent 540/540E	Reversible 540/1000 (540E optional)
Actuation	Electrohydraulic	Electrohydraulic
<b>HYDRAULICS</b>		
Type	Open center	Closed center, press/flow compensated
Pump, rated gpm (L/min) std/opt	24.7 (94)	30.1 (114)
Rated flow at one SCV, gpm (L/min)	18.4 (70)	26.4
SCVs, base (optional)	2 (up to 6)	3 mech (3-4 E/H SCV; 2Mech SCVs Mech)
Hitch category, SAE	2	3/3N
Lift capacity, 24" bhnd lift, lb (kg)	5,159 (2340) Standard 5,954 (2700) Optional	9,193 lb (4,170)
<b>DIMENSIONS</b>		
Wheelbase, in. (mm)	90.6 (2300)	108.9 (2,765)
Front axle clearance, in. (mm)	24.8 inches (630)	25.5 (648)
Height to top of ROPS, in. (mm)	110 (2,796)	NA
Height to top of cab, in. (mm)	110.7 (2,812)	125 (3,175) w/320/90R46 tires
Height to steering wheel, in., OOS	77 (1,955)	NA
Height to top of hood, in. (mm)	75 (1,905)	NA
Average weight MFWD lb. (kg)	OOS 8,300 (3,760) - Cab 9,300 (4,220)	15,150 (6872)

\* Manufacturer's estimate of power (ISO) per 97/68/EC. \*\* Horsepower at rated speed effective Spring 2012. † PTO horsepower will vary based on tractor configuration. - All specifications subject to change. See dealer for details. Power output is within + or - 5% at standard SAE J1995 and ISO3046.







## HIGH CLEARANCE CONFIGURATIONS AVAILABLE

If you need just a bit more clearance from your standard 6M or 6R Series Tractor, talk to your John Deere dealer about high-clearance wheel and tire combinations. A variety of options are available to help get you over taller crops, or through deeper beds.



**JOHN DEERE SPECIALTY TRACTORS  
FRONTIER IMPLEMENTS**

## JOHN DEERE AND FRONTIER EQUIPMENT: JUST THE RIGHT FIT

From disk harrows to wood chippers to rotary cutters to land planes, John Deere and Frontier Equipment offer a wide variety of front and rear attachments designed specifically for your tractor. Your John Deere dealer is the exclusive source for the full line of Frontier implements and attachments.

See your John Deere dealer, or visit us online to find out more about our complete line of implements:

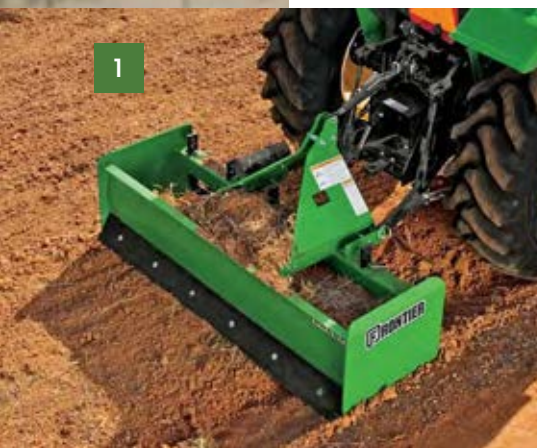
*Rotary tillers  
Rotary cutters  
Debris grapples  
Wood chippers  
Disks  
Pallet forks  
Rear blades  
Box blades  
Land planes  
Debris blowers  
Snowblowers  
Power rakes*

*Food plot seeders  
No-till drills  
Wheel rakes  
Bale wrappers  
Grinder-mixer  
Manure spreaders  
Rotary brooms  
Buckets  
Free-Stall scrapers  
Bale carriers  
Rotary rakes  
Seed spreaders*

In the U.S., visit us online at [www.BuyFrontier.com](http://www.BuyFrontier.com) and in Canada at [www.BuyFrontier.ca](http://www.BuyFrontier.ca) to get specifications and application information.







**Frontier Equipment** will make your specialty tractor even more useful. From box blades (1), rotary cutters (2), aerators (3), grapples (4), to rotary rakes (5), snow blowers (6) and finishing mowers (7), you can find what you need to take on a huge variety of chores.

This literature has been compiled for worldwide circulation. While general information, pictures, and descriptions are provided, some product options and accessories are NOT AVAILABLE in all regions. PLEASE CONTACT YOUR LOCAL DEALER FOR DETAILS. Frontier Equipment reserves the right to change specifications, design, and price of products described in this literature without notice. Optional features available for additional cost.



## SPECIALTY SERIES ATTACHMENTS

Set your tractor up just the way you want by adding quality John Deere attachments and accessories. Plus, when it comes time to trade or sell, your investment could be worth more. This is just a sampling of the attachments available for the 5 and 6 Family Specialty Tractors. See your John Deere dealer for all your parts and attachments needs.

### A. Front quick-tatch weights

Add front-end ballast with individual weights that feature molded-in handles for easy installation and removal.

### B. Rear wheel weights

Properly ballast your tractor with rear wheel weights to get greater traction in treacherous ground conditions.

### C. FieldOffice™

The FieldOffice has a place for everything – and all within reach. Plus, it's removable so you can take valuables with you wherever you go.

### D. Instructional seat

Retractable seat belt bolts securely to the cab. Seat features rear netting for additional cab storage.

### E. JD Link

From planning to harvest, only John Deere seamlessly connects machines, people, technology, and insights to give you an advantage. John Deere develops precision technology specifically for the tractors, combines, sprayers, planters, hay, and tillage products you own.

### F. Hood guards

Protect your investment – and your pocket book – from potentially costly repairs by installing a John Deere hood guard. It offers protection from rough conditions and potential operational mishaps.

### G. Electrical cooling compartment

No matter how long you're in the field, this refrigerator – with a 5 liter capacity – will keep your food and drinks cool. It comes with an on-off switch, but only operates if the tractor is on.

### H. Beacon lights

John Deere beacon light kits increase on-road visibility. For convenience, a cab-mounted rocker switch turns the light on and off.

### I. Front fenders

Made from durable rubber, front fenders protect your tractor and keep it clean. The John Deere logo adds a touch of style.

### J. AM/FM CD radio

Stay current on crop prices or enjoy your favorite CD or radio show with enhanced frequency reception. These high-quality radios are built to handle the grit and grime of life in the field.

### K. Multi-power outlet strips

Operate up to six 12-volt accessories simultaneously! Electrical outlets give either "always on" or "ignition-key" controlled power to your crucial accessories. Up to 30 amps of total output.

### L. Lockable fuel cap

Protect your tractor from fuel theft with our lockable fuel cap. Designed to fit on current and previous tractor models.

### M. Engine coolant heater kit

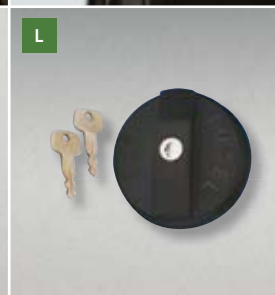
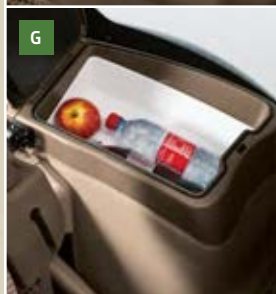
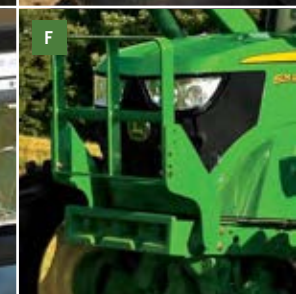
Get faster, smoother, easier starts during cold winter months to save time and money, and to reduce engine wear (4 & 6 cylinder).

### N. Toolboxes

Make sure you're equipped with all the tools you'll need in the field. Heavy-duty, metal and plastic toolboxes can be mounted in several convenient locations on your tractor.



ADD MORE COMFORT,  
CONVENIENCE, SECURITY,  
PRODUCTIVITY





## *THERE'S NO PROTECTION LIKE POWERGARD™ PROTECTION*

Protect your equipment and your investment with the John Deere PowerGard™ Programs.

The PowerGard Maintenance Program allows you to purchase scheduled maintenance with your tractor . . . you pick the program that's right for your operation (e.g.: high-hour applications or lower-hour equine use) and your equipment will get routine inspection and service by your John Deere dealer.

The PowerGard Protection Program allows you to purchase extended engine and powertrain warranty coverage for up to an additional three years or 3,000 hours over the normal warranty period. You get flexible coverage, low deductibles and high peace of mind. Ask your dealer for details, or visit us online at [www.powergard.com](http://www.powergard.com) | [www.powergard.ca](http://www.powergard.ca).



## *WE CARE ABOUT YOU AND YOUR EQUIPMENT.*

Keeping your equipment in solid working order is a priority for your John Deere dealer. With a complete inventory of genuine John Deere parts, highly trained service technicians, and a thorough understanding of your business, your John Deere dealer knows how to keep you and your equipment up and running.

PowerGard Protection Plan extended warranty covers failures due to defective materials or original workmanship of covered components. In Canada, customers have a choice between either the Limited (engine & powertrain) coverage form or the Comprehensive (full-machine) coverage form. See your dealer or [www.deere.ca](http://www.deere.ca) for details





You have a loyal sidekick. So should your operation.



As you face the demands of your day, it's good to have company you can count on. You can rely on us when you need financing for your operation. With John Deere Financial, you have a resource that gives you many options to choose from.

At the end of the day — and every day forward — we'll be there at your side.



U.S.A. [www.JohnDeereFinancial.com](http://www.JohnDeereFinancial.com) | Canada [www.JohnDeereFinancial.ca](http://www.JohnDeereFinancial.ca)



This literature has been compiled for worldwide circulation. While general information, pictures, and descriptions are provided, some illustrations and text may include finance, insurance, product options and accessories NOT AVAILABLE in all regions. PLEASE CONTACT YOUR LOCAL DEALER FOR DETAILS. John Deere reserves the right to change specification, design and price of products described in this literature without notice. John Deere, the leaping deer symbol, and John Deere's green and yellow trade dress are the trademarks of Deere & Company.

DSAA78109 Litho in U.S.A. (19-11)

[JohnDeere.com/Ag](http://JohnDeere.com/Ag) | [JohnDeere.ca/Ag](http://JohnDeere.ca/Ag)

