



Some of the photos may include optional equipment.

HYUNDAI LPG FORKLIFT TRUCKS Applied Tier 4 Engine

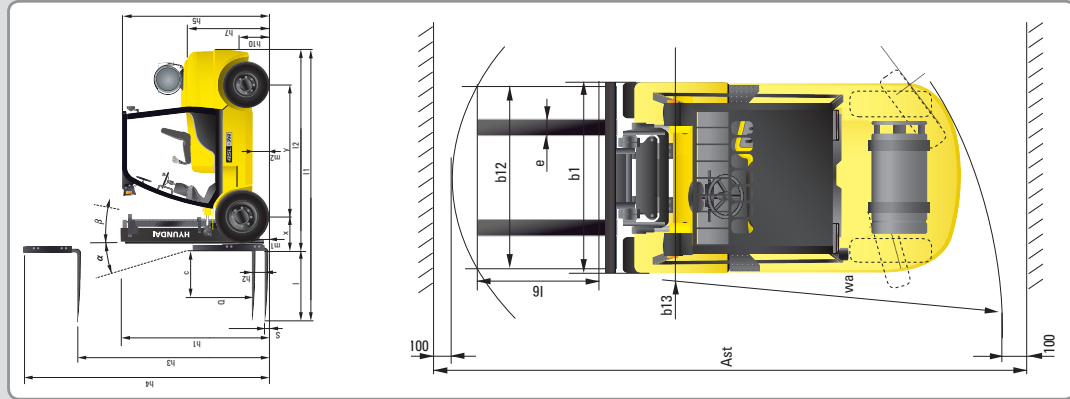
35L/40L/45L/50L-7A



Specification

Identification	Hyundai	Hyundai	Hyundai
1.1 Manufacturer	35L/7A	40L/7A	45L/7A
1.2 Manufacturer's type designation	LP	LP	LP
1.3 Drive electric (battery or mineral diesel) petrol, fuel gas, mineral LP	LP	LP	LP
1.4 Type of operation (hand/pedals/steering/steering/pedal/pickup)	steered	steered	steered
1.5 Load capacity / rated load (kg)	3300	4000	5000
1.6 Load center distance (mm)	600	600	600
1.8 Load clearance, center of drive axle to fork x (mm)	56	56	56
1.9 Wheelbase y (mm)	2000	2000	2000
Weights			
2.1 Service weight (kg)	5348	6165	6939
2.2 Axle loading, loaded front/rear (kg)	8300/488	9380/1089	9980/1188
2.3 Axle loading, unloaded front/rear (kg)	2738/2350	2722/2330	2770/2300
Wheels, Chassis			
3.1 Tires size (other, super-tyres, pneumatics, polyurethane)	Front/rear (Std./opt)	Front/rear (Std./opt)	Front/rear (Std./opt)
3.2 Tires size, front width x φ	8.25 R 14.5P	7.50 R 16.2P	7.50 R 16.2P
3.3 Tires size, rear width x φ	7.00 R 12.5P	7.00 R 12.5P	7.00 R 12.5P
3.5 Wheels, number front/rear (solid/vent wheels)	2/2	4/2	4/2
3.6 Track width, front b0 (mm)	1132	1282	1282
3.7 Track width, rear b1 (mm)	1140	1140	1140
Basic Dimensions			
4.1 Mast fork carriage tilt forward/backward (α / β) - degrees	8/10	8/10	8/10
4.2 Lower mast height b1 (mm)	2226	2220	2220
4.3 Free lift h0 (mm)	110	110	110
4.4 Lift height h1 (mm)	3300	3300	3300
4.5 Extended mast height h4 (mm)	4224	4224	4147
4.7 Overhead load point height h5 (mm)	2400	2400	2400
4.8 Stem height / standing height h7 (mm)	1100	1100	1100
4.12 Coupler height h10 (mm)	388	388	385
4.19 Overall length l1 (mm)	4145	4205	4135
4.20 Length to face of forks l2 (mm)	3075	3135	3135
4.21 Overall width b1 (mm)	1300	1300	1300
4.22 Fork dimensions s1 e / (mm)	50 x 120 / 1070	50 x 120 / 1220	50 x 120 / 1220
4.23 Fork carriage ISO 2208, class / type / AB	H1 / A	H1 / A	H1 / A
4.31 Ground clearance, loaded, under mast b12 (mm)	1300	1600	1600
4.32 Ground clearance, loaded, under mast m1 (mm)	110	15	15
4.33 Ground clearance, center of wheelbase m2 (mm)	200	200	200
4.34 Axle width for pallets 1000 x 1200 crossways Ast (mm)	4367	4360	4368
4.35 Turning radius W6 (mm)	4767	4320	4368
4.36 Swales / pivot point distance b13 (mm)	2066	2069	2305
Performance Data			
5.1 Travel speed, Unloaded (km/h)	23.8	22.9	22.8
5.2 Lift speed, Loaded / Unloaded (mm/s)	510 / 530	510 / 530	440 / 460
5.3 Lowering speed, Loaded / Unloaded (mm/s)	500 / 450	500 / 450	500 / 450
5.5 Drawbar pull, Loaded (kg)	4002	4005	3330
5.7 Gradient performance, Loaded (%)	40.5	38.2	37.7
5.10 Service brake	Hydraulic	Hydraulic	Hydraulic
Engine			
6.1 Engine manufacturer / type	GM/4.3L	GM/4.3L	GM/4.3L
6.2 Engine power acc. to ISO 1585 (Kw)	70	70	70
6.3 Rated speed (r/min)	2300	2300	2300
6.4 No. of Cylinder / cubic capacity (l/cyl)	6 / 4.294	6 / 4.294	6 / 4.294
Other Details			
8.2 Type of drive control	Power Shift	Power Shift	Power Shift
8.3 Operating pressure (bar)	225 / 188	225 / 188	225 / 188
8.4 Oil volume (l/min)	30	30	30
8.5 Noise db(A)	80	80	80

Dimension



PLEASE CONTACT

HYUNDAI | FORKLIFT
HEAVY INDUSTRIES CO., LTD.

Head Office (in Office)
141, Ulsan-daero, Ulsan, Korea
Tel (82) (2) 746-4526; 4529 Fax (82) (2) 745-7444-7445
Americas Operation: Hyundai Construction Equipment Americas, Inc.
955 ESTES AVENUE, ELK GROVE VILLAGE, IL, 60007 Tel (1) 847-437-3333 Fax (1) 847-437-3574
Europe Operation: Hyundai Heavy Industries Europe NV
VOSSENDAAL 11, 2440 GEEB, BEELGIUM Tel (32) 145-56-2200 Fax (32) 145-59-3405

www.hyundai-ce.com

2010.09 Rev.0

NEW criteria of Forklift Trucks

Hyundai introduces a new line of 7A series
LPG forklift trucks.
Excellent power and performance make your
business more profitable.



OPSS (Operator Presence Sensing System)

Control of mast tilting, lifting and lowering is not possible through operation of the appropriate control when the operator is not in the seated position.

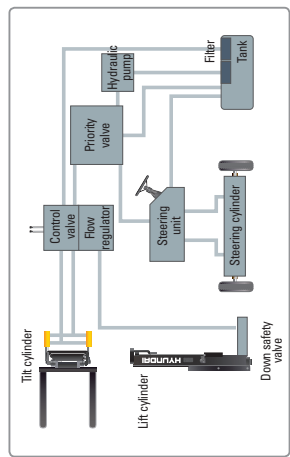
■ Some of the photos may include optional equipment.

The new master on the job-site!

Smooth running, efficient and ergonomically designed, 35/40/45/50L-7A series are made to meet your needs.



■ Some of the photos may include optional equipment.



State-of-the-art Hydraulic System

The latest large-capacity hydraulic system reacts quickly during operation, and a low-noise control valve increases both efficiency and durability.



Fully Hydrostatic Power Steering

A hydraulic steering system always guarantees smooth and flexible steering, preventing overrun and kick-back.



Increased Mast Tilting Angle

Utilizing the mast tilting angle of 8 degrees forward and 10 degrees backward, the operator can safely and rapidly perform loading and unloading jobs.

Faster Travel Speed & Better Gradability

The powerful high-output engine provides greater acceleration, better gradability and faster travel speed on any tough terrains or slopes.



Gradability(Loaded)

35L-7A : 40.5% 45L-7A : 31.6%
40L-7A : 36.2% 50L-7A : 28.7%

Travel Speed(Unloaded)

35L-7A : 23.8 km/h
40L-7A : 22.9 km/h
45L-7A : 22.9 km/h
50L-7A : 22.8 km/h

ERROR: ioerror
OFFENDING COMMAND: image

STACK:

-mark-
-savelevel-
-mark-
-savelevel-