

130 X₂

specifications

Operating Weight: 28,440 lbs (12,900 kg)

SAE Net Horsepower: 95 HP (71 kW)

Bucket Range: .42 - .98 yd³ (.32 - .75 m³)

Engine

Isuzu AJ-4JJ1X Tier 3 turbocharged diesel engine with electronic fuel control, 4-cylinder, water-cooled, EGR with cooler, air-to-air intercooler, fuel cooler, auto idle-start, neutral safety start, glow plugs, auto warm-up, EPF engine protection, dual stage fuel filtration, remote oil filter, green plug oil drain.

SAE net horsepower	95 HP (71 kW) @ 2,000 rpm
Displacement	3.0 L
Maximum torque	265 lbf-ft (359 N-m) @ 1,600 rpm
Starter	24V-4.0kW
Alternator	50 amp
Battery	72 amp hours

Cab and Controls

Pressurized cab with climate control a/c and heat with defroster, LCD monitor, illuminated soft-touch switches, low-effort controls pre-wired for auxiliary hydraulics, control pattern changer, sliding LEXAN® MARGARD® windows, safety glass front window with automatic locking system and vandal cover, intermittent windshield wiper with washer, emergency rear window exit, polycarbonate roof hatch with sunshade, shockless cab suspension with four fluid mountings, KAB® reclining suspension seat, sliding 4-position tilting control consoles, AM/FM radio, digital clock, dome light, seat belt, coat hook, cup holder, storage compartments, floor mat, footrests, ashtray, 24-volt cigarette lighter, 12-volt outlet, travel alarm, handrail, mirrors.

Four selectable working modes, anti-theft password protection system, on-board self-diagnostic system with memory, auto-idling system, one-touch decelerator, auto power boost, gate lock safety shutoff.

A/C output	18,100 BTU/hr
Heater output	20,150 BTU/hr
Sound level (inside cab)	68.5 dB(A)
Sound level (exterior)	96.5 dB(A)

Hydraulic System

Open-center system, two variable displacement axial piston pumps and one gear pump for pilot controls, main control valve with one 4-spool valve and one 5-spool valve with auxiliary spool - stackable, oil cooler, auto power boost, boom and arm holding valves, o-ring face seals, 6 micron return filter, firewall.

Hydraulic Pumps

Maximum flow	2 x 34.1 gpm (2 x 129 l/min)
Pilot pump maximum flow	5.8 gpm (22 l/min)
Blade pump maximum flow	14.2 gpm (5.4 l/min)

Relief Valve Settings

Boom/arm/bucket	4,970 psi (343 bar)
in Power-Boost Mode	5,260 psi (363 bar)
Swing circuit	4,260 psi (294 bar)
Travel	4,970 psi (343 bar)
Blade	2,988 psi (206 bar)

Hydraulic Cylinders

	number of cylinders – bore x rod x stroke.
Boom	2 – 4.1" x 2.8" x 37.8" (105 mm x 70 mm x 961 mm)
Arm	1 – 4.5" x 3.1" x 43.6" (115 mm x 80 mm x 1 108 mm)
Bucket	1 – 3.7" x 2.6" x 34.7" (95 mm x 65 mm x 881 mm)
Blade	2 – 3.9" x 2.8" x 8.0" (100 mm x 70 mm x 203 mm)

Hydraulic Oil Filtration

Return filter	6 micron
Pilot filter	8 micron
Suction screen	105 micron



Swing

Planetary reduction powered by axial piston motor. Internal ring gear with grease cavity for swing pinion. Swing bearing is single-row shear type ball bearing. Mechanical disc swing brake. Auto power swing.

Swing speed	0 – 14 rpm
Tail swing	7' 0" (2.13 m)
Swing torque	24,340 lbf-ft. (33.0 kN·m)

Undercarriage

X Pattern carbody with sealed and strutted track chain, sealed rollers and idlers, two-speed independent hydrostatic travel with compact planetary final drive, disc type brakes, adjustable track tension, swivel guard.

Carrier rollers

Regular undercarriage	1 per side
Long undercarriage	2 per side
Track rollers	7 per side
Track link pitch	6.75" (172 mm)

Shoes

Regular undercarriage	43 per side
Long undercarriage	46 per side
Shoe width	23.6" (600 mm)

Ground pressure

Regular undercarriage	4.93 psi (0.34 bar)
Long undercarriage	4.64 psi (0.32 bar)

Lubricant and Coolant Capacity

Fuel tank	68.68 gal. (260 liters)
Hydraulic tank	21.66 gal. (82 liters)
Hydraulic system	41.48 gal. (157 liters)
Final drive (per side)	.55 gal. (2.1 liters)
Swing drive	.58 gal. (2.2 liters)
Engine oil	4.49 gal. (17 liters)
Cooling system	3.86 gal. (14.6 liters)

Travel System

Two-speed independent hydrostatic travel with compact axial piston motors. Hydraulic motor powered output shaft coupled to a planetary reduction unit and track sprocket. All hydraulic components mounted within the width of side frame.

Automatic downshift. Spring applied, hydraulically released disc parking brake built into each motor. Each travel motor equipped with counterbalance valve to prevent overspeeding down an incline.

Max. travel speed	2.1 - 3.5 mph (3.4 - 5.6 km/h)
Drawbar pull	25,853 lbf (115 kN)
Gradeability	70% (35°)

Attachment

Boom	15' 2" (4.63 m)
------	-----------------

Available Arms

	Digging Force*
• 8' 2" (2.50 m)	13,940 lbf (62 kN)
with Auto Power-Boost applied	14,840 lbf (66 kN)
• 9' 10" (3.01 m)	12,590 lbf (56 kN)
with Auto Power-Boost applied	13,490 lbf (60 kN)

Bucket Digging Force	20,230 lbf (90 kN)
with Auto Power-Boost applied	21,360 lbf (95 kN)

*Digging force ratings are based on ISO 6015, "Earthmoving Machinery – Hydraulic Excavators – Tool Forces."

Fuel Usage*

Heavy	2.94 gal / hr (11.14 liter / hr)
Average	2.50 gal / hr (9.46 liter / hr)
Light	2.00 gal / hr (7.57 liter / hr)

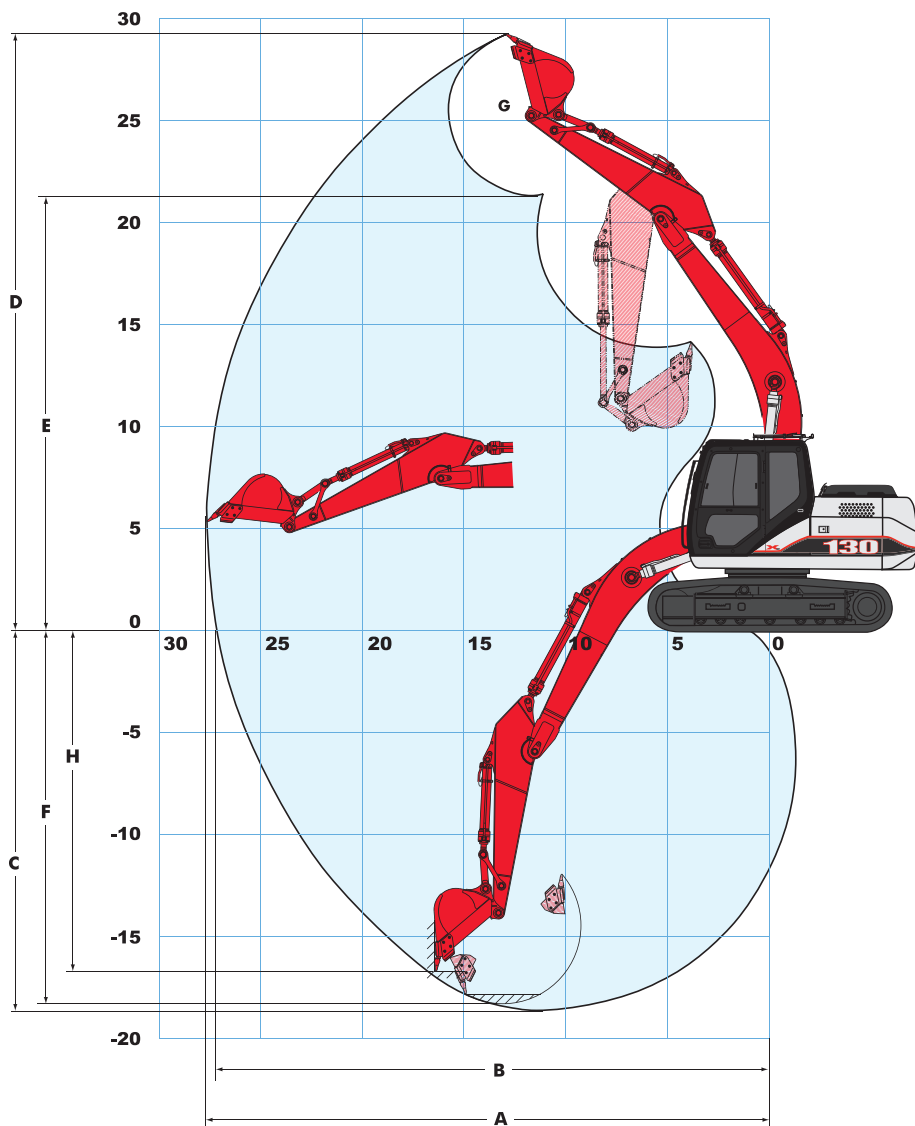
*Fuel economy varies widely depending on application. "Heavy" represents nearly continuous operation in tough digging applications in SP Mode. "Light" represents easy digging applications utilizing the machine about 50% of the time in SP Mode.

Operating Weight

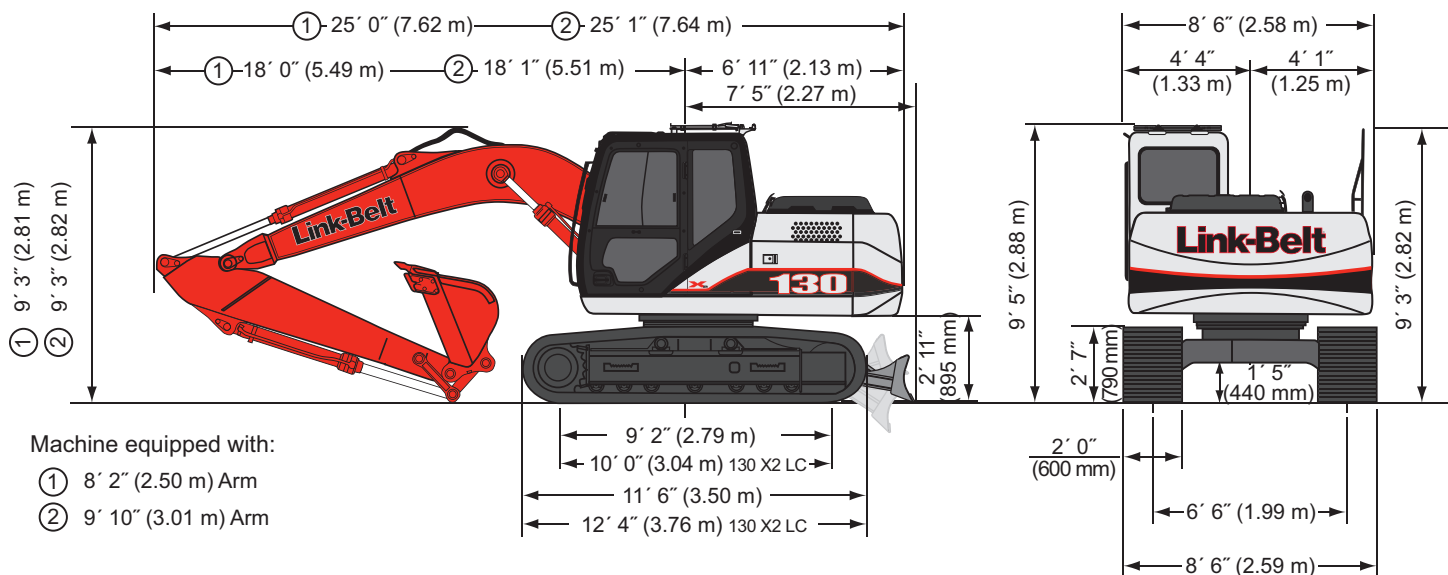
Working weight with 23.6" (600 mm) shoes, 15' 2" (4.63 m) boom, 8' 2" (2.50 m) arm 880 lb. (400 kg) bucket, LC undercarriage	28,440 lbs (12,900 kg)
--	------------------------

130 X2 Specifications

Working Ranges



Machine equipped with 15' 2" (4.63 m) boom	8' 2" Arm (2.50 m)	9' 10" Arm (3.01 m)
A. Maximum reach	27' 3" (8.31 m)	28' 9" (8.77 m)
B. Maximum reach @ ground level	26' 10" (8.17 m)	28' 4" (8.64 m)
C. Maximum dig depth	18' 2" (5.54 m)	19' 10" (6.05 m)
D. Maximum dig height	28' 9" (8.77 m)	29' 8" (9.05 m)
E. Maximum dump height	21' 0" (6.39 m)	21' 11" (6.68 m)
F. Digging depth - 8' level bottom	17' 6" (5.33 m)	19' 3" (5.87 m)
G. Bucket rotation	178°	178°
H. Maximum vertical wall depth	16' 3" (4.95 m)	17' 7" (5.35 m)



130 X2 Specifications

Lifting Capacities

8' 2" (2.50 m) Arm with 15' 2" (4.63 m) Boom and 880 lb. (399 kg) Bucket with Power-Boost Applied

Radius of Load - Regular Undercarriage without Blade											
		5' 0" (1.52 m)		10' 0" (3.05 m)		15' 0" (4.57 m)		20' 0" (6.10 m)		Cap. at Max. Reach	
		End	Side	End	Side	End	Side	End	Side	End	Side
+25' 0"	lbs / (kg)									3,450* / (1 564*)	3,450* / (1 565*)
+20' 0"	lbs / (kg)									2,950* / (1 338*)	2,950* / (1 338*)
+15' 0"	lbs / (kg)					6,200* / (2 812*)	6,200* / (2 812*)	6,050 / (2 744)	4,300 / (1 950)	2,750* / (1 247*)	2,750* / (1 247*)
+10' 0"	lbs / (kg)			10,150* / (4 604*)	10,150* / (4 604*)	8,000* / (3 628*)	6,850 / (3 107)	5,900 / (2 676)	4,200 / (1 905)	2,750* / (1 247*)	2,500 / (1 134)
+5' 0"	lbs / (kg)			16,650* / (7 552*)	11,900 / (5 398)	9,050 / (4 105)	6,300 / (2 858)	5,650 / (2 563)	3,950 / (1 792)	2,900* / (1 315*)	2,400 / (1 089)
Ground	lbs / (kg)	5,900* / (2 676*)	5,900* / (2 676*)	17,100 / (7 757)	10,900 / (4 944)	8,550 / (3 878)	5,850 / (2 654)	5,400 / (2 449)	3,750 / (1 701)	3,250* / (1 474*)	2,500 / (1 134)
-5' 0"	lbs / (kg)	11,350* / (5 148*)	11,350* / (5 148*)	17,000 / (7 711)	10,800 / (4 899)	8,350 / (3 788)	5,650 / (2 563)	5,300 / (2 404)	3,600 / (1 633)	3,900* / (1 769*)	2,850 / (1 293)
-10' 0"	lbs / (kg)	18,050* / (8 187*)	18,050* / (8 187*)	17,200 / (7 802)	11,000 / (4 990)	8,350 / (3 788)	5,650 / (2 563)	5,350 / (2 427)	3,700 / (1 678)	5,300* / (2 404*)	3,950 / (1 792)
-15' 0"	lbs / (kg)			13,700* / (6 214*)	11,450 / (5 194)	8,200* / (3 719*)	6,000 / (2 722)				

8' 2" (2.50 m) Arm with 15' 2" (4.63 m) Boom and 880 lb. (399 kg) Bucket with Power-Boost Applied

Radius of Load - Regular Undercarriage with Blade on Ground											
		10' 0" (3.05 m)		15' 0" (4.57 m)		20' 0" (6.10 m)				Cap. at Max. Reach	
		End	Side	End	Side	End	Side	End	Side	End	Side
+25' 0"	lbs / (kg)									3,450* / (1 564*)	3,450* / (1 565*)
+20' 0"	lbs / (kg)									2,950* / (1 338*)	2,950* / (1 338*)
+15' 0"	lbs / (kg)					6,200* / (2 812*)	6,200* / (2 812*)	6,300* / (2 858*)	4,600 / (2 087)	2,750* / (1 247*)	2,750* / (1 247*)
+10' 0"	lbs / (kg)	10,150* / (4 604*)	10,150* / (4 604*)	8,000* / (3 629*)	7,250 / (3 289)	7,100* / (3 221*)	4,450 / (2 019)			2,750* / (1 247*)	2,700* / (1 226*)
+5' 0"	lbs / (kg)	16,650* / (7 552*)	12,650 / (5 738)	10,300* / (4 672*)	6,700 / (3 039)	8,100* / (3 674*)	4,200 / (1 905)			2,900* / (1 315*)	2,600 / (1 179)
Ground	lbs / (kg)	19,200* / (8 709*)	11,650 / (5 284)	12,300* / (5 579*)	6,250 / (2 835)	8,950* / (4 060*)	4,000 / (1 814)			3,250* / (1 474*)	2,700 / (1 225)
-5' 0"	lbs / (kg)	20,100* / (9 117*)	11,500 / (5 216)	12,850* / (5 829*)	6,050 / (2 744)	9,250* / (4 196*)	3,900 / (1 769)			3,900* / (1 769*)	3,100 / (1 406)
-10' 0"	lbs / (kg)	18,400* / (8 346*)	11,700 / (5 307)	12,100* / (5 489*)	6,100 / (2 767)	7,750* / (3 515*)	3,950 / (1 792)			5,300* / (2 404*)	4,250 / (1 928)
-15' 0"	lbs / (kg)	13,700* / (6 214*)	12,100 / (5 489)	8,200* / (3 720*)	6,400 / (2 903)						

8' 2" (2.50 m) Arm with 15' 2" (4.63 m) Boom and 880 lb. (399 kg) Bucket with Power-Boost Applied

Radius of Load - Regular Undercarriage with Blade Off Ground											
		5' 0" (1.52 m)		10' 0" (3.05 m)		15' 0" (4.57 m)		20' 0" (6.10 m)		Cap. at Max. Reach	
		End	Side	End	Side	End	Side	End	Side	End	Side
+25' 0"	lbs / (kg)									3,450* / (1 564*)	3,450* / (1 565*)
+20' 0"	lbs / (kg)									2,950* / (1 338*)	2,950* / (1 338*)
+15' 0"	lbs / (kg)					6,200* / (2 812*)	6,200* / (2 812*)	6,150 / (2 790)	4,600 / (2 087)	2,750* / (1 247*)	2,750* / (1 247*)
+10' 0"	lbs / (kg)			10,150* / (4 604*)	10,150* / (4 604*)	8,000* / (3 629*)	7,250 / (3 289)	6,000 / (2 722)	4,450 / (2 019)	2,750* / (1 247*)	2,700* / (1 226*)
+5' 0"	lbs / (kg)			16,650* / (7 552*)	12,650 / (5 738)	9,200 / (4 173)	6,700 / (3 039)	5,750 / (2 608)	4,200 / (1 905)	2,900* / (1 315*)	2,600 / (1 179)
Ground	lbs / (kg)	5,900* / (2 676*)	5,900* / (2 676*)	17,300 / (7 847)	11,650 / (5 284)	8,700 / (3 946)	6,250 / (2 835)	5,500 / (2 495)	4,000 / (1 814)	3,250* / (1 474*)	2,700 / (1 225)
-5' 0"	lbs / (kg)	11,350* / (5 148*)	11,350* / (5 148*)	17,250 / (7 825)	11,500 / (5 216)	8,450 / (3 833)	6,050 / (2 744)	5,400 / (2 449)	3,900 / (1 769)	3,900* / (1 769*)	3,100 / (1 406)
-10' 0"	lbs / (kg)	18,050* / (8 187*)	18,050* / (8 187*)	17,450 / (7 915)	11,700 / (5 307)	8,500 / (3 856)	6,100 / (2 767)	5,450 / (2 472)	3,950 / (1 792)	5,300* / (2 404*)	4,250 / (1 928)
-15' 0"	lbs / (kg)			13,700* / (6 214*)	12,100 / (5 489)	8,200* / (3 720*)	6,400 / (2 903)				

130 X2 Specifications

Lifting Capacities

9' 10" (3.01 m) Arm with 15' 2" (4.63 m) Boom and 745 lb. (339 kg) Bucket with Power-Boost Applied

Radius of Load - Regular Undercarriage without Blade													
		5' 0" (1.52 m)		10' 0" (3.05 m)		15' 0" (4.57 m)		20' 0" (6.10 m)		25' 0" (7.62 m)		Cap. at Max. Reach	
		End	Side	End	Side	End	Side	End	Side	End	Side	End	Side
+25' 0"	lbs / (kg)											3,300* / (1 497*)	3,300* / (1 497*)
+20' 0"	lbs / (kg)											2,900* / (1 315*)	2,900* / (1 315*)
+15' 0"	lbs / (kg)							5,700* / (2 585*)	4,500 / (2 041)			2,750* / (1 247*)	2,600 / (1 179)
+10' 0"	lbs / (kg)					7,000* / (3 175*)	6,950 / (3 153)	6,050 / (2 744)	4,300 / (1 950)	4,000 / (1 814)	2,800 / (1 270)	2,750* / (1 247*)	2,300 / (1 043)
+5' 0"	lbs / (kg)			14,300* / (6 486*)	12,400 / (5 625)	9,250 / (4 196)	6,450 / (2 926)	5,750 / (2 608)	4,050 / (1 837)	3,900 / (1 769)	2,700 / (1 225)	2,900* / (1 315*)	2,200 / (998)
Ground	lbs / (kg)	6,100* / (2 766*)	6,100* / (2 766*)	17,300 / (7 847)	11,050 / (5 012)	8,650 / (3 924)	5,900 / (2 676)	5,450 / (2 472)	3,750 / (1 701)	3,800 / (1 724)	2,600 / (1 179)	3,250* / (1 474*)	2,250 / (1 021)
-5' 0"	lbs / (kg)	10,650* / (4 830*)	10,650* / (4 830*)	16,850 / (7 643)	10,700 / (4 854)	8,300 / (3 765)	5,650 / (2 563)	5,300 / (2 404)	3,600 / (1 633)			3,750 / (1 701)	2,550 / (1 157)
-10' 0"	lbs / (kg)	15,400* / (6 985*)	15,400* / (6 985*)	17,000 / (7 711)	10,800 / (4 899)	8,300 / (3 765)	5,600 / (2 540)	5,300 / (2 404)	3,600 / (1 633)			4,800 / (2 177)	3,300 / (1 497)
-15' 0"	lbs / (kg)	24,300* / (11 022*)	24,300* / (11 022*)	15,750* / (7 144*)	11,150 / (5 058)	8,500 / (3 856)	5,800 / (2 631)						

9' 10" (3.01 m) Arm with 15' 2" (4.63 m) Boom and 745 lb. (339 kg) Bucket with Power-Boost Applied

Radius of Load - Regular Undercarriage with Blade on Ground												
		10' 0" (3.05 m)		15' 0" (4.57 m)		20' 0" (6.10 m)		25' 0" (7.62 m)		Cap. at Max. Reach		
		End	Side	End	Side	End	Side	End	Side	End	Side	
+25' 0"	lbs / (kg)									3,300* / (1 497*)	3,300* / (1 497*)	
+20' 0"	lbs / (kg)									2,900* / (1 315*)	2,900* / (1 315*)	
+15' 0"	lbs / (kg)					5,700* / (2 586*)	4,750 / (2 155)			2,750* / (1 247*)	2,750* / (1 247*)	
+10' 0"	lbs / (kg)			7,000* / (3 175*)	7,000* / (3 175*)	6,450* / (2 926*)	4,600 / (2 087)	4,350 / (1 973)	3,000 / (1 361)	2,750* / (1 247*)	2,500 / (1 134)	
+5' 0"	lbs / (kg)	14,300* / (6 486*)	13,100 / (5 942)	9,450* / (4 287*)	6,850 / (3 107)	7,600* / (3 447*)	4,300 / (1 950)	5,950 / (2 699)	2,900 / (1 315)	2,900* / (1 315*)	2,350 / (1 066)	
Ground	lbs / (kg)	18,650* / (8 460*)	11,800 / (5 352)	11,750* / (5 330*)	6,350 / (2 880)	8,650* / (3 924*)	4,050 / (1 837)	6,350 / (2 880)	2,800 / (1 270)	3,250* / (1 474*)	2,450 / (1 111)	
-5' 0"	lbs / (kg)	20,100* / (9 117*)	11,400 / (5 171)	12,800* / (5 806*)	6,050 / (2 744)	9,200* / (4 173*)	3,900 / (1 769)			3,800* / (1 724*)	2,750 / (1 247)	
-10' 0"	lbs / (kg)	19,250* / (8 732*)	11,500 / (5 216)	12,500* / (5 670*)	6,000 / (2 722)	8,850* / (4 014)	3,900 / (1 769)			4,900 / (2 268*)	3,550 / (1 610)	
-15' 0"	lbs / (kg)	15,750 / (7 144)	11,900 / (5 398)	10,200* / (4 627*)	6,200 / (2 812)							

9' 10" (3.01 m) Arm with 15' 2" (4.63 m) Boom and 745 lb. (339 kg) Bucket with Power-Boost Applied

Radius of Load - Regular Undercarriage with Blade Off Ground													
		5' 0" (1.52 m)		10' 0" (3.05 m)		15' 0" (4.57 m)		20' 0" (6.10 m)		25' 0" (7.62 m)		Cap. at Max. Reach	
		End	Side	End	Side	End	Side	End	Side	End	Side	End	Side
+25' 0"	lbs / (kg)											3,300* / (1 497*)	3,300* / (1 497*)
+20' 0"	lbs / (kg)											2,900* / (1 315*)	2,900* / (1 315*)
+15' 0"	lbs / (kg)							5,700* / (2 586*)	4,750 / (2 155)			2,750* / (1 247*)	2,750* / (1 247*)
+10' 0"	lbs / (kg)					7,000* / (3 175*)	7,000* / (3 175*)	6,150 / (2 790)	4,600 / (2 087)	4,100 / (1 860)	3,000 / (1 361)	2,750* / (1 247*)	2,500 / (1 134)
+5' 0"	lbs / (kg)			14,300* / (6 486*)	13,100 / (5 942)	9,350 / (4 241)	6,850 / (3 107)	5,850 / (2 654)	4,300 / (1 950)	4,000 / (1 814)	2,900 / (1 315)	2,900* / (1 315*)	2,350 / (1 066)
Ground	lbs / (kg)	6,100* / (2 767*)	6,100* / (2 767*)	17,600 / (7 983)	11,800 / (5 352)	8,800 / (3 992)	6,350 / (2 880)	5,550 / (2 517)	4,050 / (1 837)	3,850 / (1 746)	2,800 / (1 270)	3,250* / (1 474*)	2,450 / (1 111)
-5' 0"	lbs / (kg)	10,650* / (4 831*)	10,650* / (4 831*)	17,150 / (7 779)	11,400 / (5 171)	8,450 / (3 833)	6,050 / (2 744)	5,400 / (2 449)	3,900 / (1 769)			3,800* / (1 724*)	2,750 / (1 247)
-10' 0"	lbs / (kg)	15,400* / (6 985*)	15,400* / (6 985*)	17,250 / (7 825)	11,500 / (5 216)	8,450 / (3 833)	6,000 / (2 722)	5,400 / (2 449)	3,900 / (1 769)			4,900 / (2 268*)	3,550 / (1 610)
-15' 0"	lbs / (kg)	24,300* / (11 022*)	24,300* / (11 022*)	15,750* / (7 144*)	11,900 / (5 398)	8,650 / (3 924)	6,200 / (2 812)						

130 X2 Specifications

Lifting Capacities

8' 2" (2.50 m) Arm with 15' 2" (4.63 m) Boom and 880 lb. (399 kg) Bucket with Power-Boost Applied

Radius of Load - Long Undercarriage											
		5' 0" (1.52 m)		10' 0" (3.05 m)		15' 0" (4.57 m)		20' 0" (6.10 m)		Cap. at Max. Reach	
		End	Side	End	Side	End	Side	End	Side	End	Side
+25' 0"	lbs / (kg)									3,450* / (1 565*)	3,450* / (1 565*)
+20' 0"	lbs / (kg)									2,950* / (1 338*)	2,950* / (1 338*)
+15' 0"	lbs / (kg)					6,200* / (2 812)	6,200* / (2 812)	6,300* / (2 858*)	4,450 / (2 019)	2,750* / (1 247*)	2,750* / (1 247*)
+10' 0"	lbs / (kg)			10,150* / (4 604*)	10,150* / (4 604*)	8,000* / (3 629*)	7,000 / (3 175)	6,800 / (3 084)	4,300 / (1 950)	2,750* / (1 247*)	2,600 / (1 179)
+5' 0"	lbs / (kg)			16,650* / (7 552*)	12,200 / (5 534)	10,300* / (4 672*)	6,450 / (2 926)	6,550 / (2 971)	4,050 / (1 837)	2,900* / (1 315*)	2,450 / (1 111)
Ground	lbs / (kg)	5,900* / (2 676*)	5,900* / (2 676*)	19,200* / (8 709*)	11,200 / (5 080)	10,050 / (4 559)	6,000 / (2 722)	6,300 / (2 858)	3,850 / (1 746)	3,250* / (1 474*)	2,550 / (1 157)
-5' 0"	lbs / (kg)	11,350* / (5 148*)	11,350* / (5 148*)	20,100* / (9 117*)	11,100 / (5 035)	9,800 / (4 445)	5,800 / (2 631)	6,200 / (2 812)	3,750 / (1 701)	3,900* / (1 769*)	2,950 / (1 338)
-10' 0"	lbs / (kg)	18,050* / (8 187*)	18,050* / (8 187*)	18,400* / (8 346*)	11,300 / (5 126)	9,850 / (4 468)	5,850 / (2 654)	6,250 / (2 835)	3,800 / (1 724)	5,300* / (2 404*)	4,050 / (1 837)
-15' 0"	lbs / (kg)			13,700* / (6 214*)	11,750 / (5 330)	8,200* / (3 720*)	6,200 / (2 812)				

9' 11" (3.01 m) Arm with 15' 2" (4.63 m) Boom and 745 lb. (338 kg) Bucket with Power-Boost Applied

Radius of Load - Long Undercarriage													
		5' 0" (1.52 m)		10' 0" (3.05 m)		15' 0" (4.57 m)		20' 0" (6.10 m)		25' 0" (7.62 m)		Cap. at Max. Reach	
		End	Side	End	Side	End	Side	End	Side	End	Side	End	Side
+25' 0"	lbs / (kg)											3,300* / (1 497*)	3,300* / (1 497*)
+20' 0"	lbs / (kg)											2,900* / (1 315*)	2,900* / (1 315*)
+15' 0"	lbs / (kg)							5,700* / (2 586*)	4,600 / (2 087)			2,750* / (1 247*)	2,700 / (1 225)
+10' 0"	lbs / (kg)					7,000* / (3 175*)	7,000* / (3 175*)	6,450* / (2 926*)	4,400 / (1 996)	4,350* / (1 973*)	2,900 / (1 315)	2,750* / (1 247*)	2,400 / (1 089)
+5' 0"	lbs / (kg)			14,300* / (6 486*)	12,700 / (5 761)	9,450* / (4 287*)	6,650 / (3 016)	6,650 / (3 016)	4,150 / (1 882)	4,550 / (2 064)	2,800 / (1 270)	2,900* / (1 315*)	2,250 / (1 021)
Ground	lbs / (kg)	6,100* / (2 767*)	6,100* / (2 767*)	18,650* / (8 460*)	11,350 / (5 148)	10,150 / (4 604)	6,100 / (2 767)	6,400 / (2 903)	3,900 / (1 769)	4,450 / (2 019)	2,650 / (1 202)	3,250* / (1 474*)	2,350 / (1 066)
-5' 0"	lbs / (kg)	10,650* / (4 831*)	10,650* / (4 831*)	20,100* / (9 117*)	10,950 / (4 967)	9,800 / (4 445)	5,800 / (2 631)	6,200 / (2 812)	3,750 / (1 701)			3,800* / (1 724*)	2,650 / (1 656)
-10' 0"	lbs / (kg)	15,400* / (6 985*)	15,400* / (6 985*)	19,250* / (8 732*)	11,100 / (5 035)	9,750 / (4 423)	5,750 / (2 608)	6,200 / (2 812)	3,700 / (1 678)			5,000* / (2 268*)	3,400 / (1 542)
-15' 0"	lbs / (kg)	24,300* / (11 022*)	24,300* / (11 022*)	15,750* / (7 144*)	11,450 / (5 194)	9,950 / (4 513)	5,950 / (2 699)						

Notes: Excavator lifting capacities

- Lifting capacities shown should not be exceeded. Weight of all lifting accessories must be deducted from the above lifting capacities.
- Lifting capacities are based on machine standing on firm, uniform supporting surface. User must make allowances for job conditions such as soft or uneven ground.
- Lifting capacities shown do not exceed 75% of minimum tipping loads or 87% of hydraulic capacities. **Capacities marked with an asterisk (*) are limited by hydraulic capacities.**
- Least stable position is over the side.
- Operator should be fully acquainted with the Operator's Manual & Operating Safety Booklet, furnished by LBX before operating the machine.
- Capacities apply only to the machine as originally manufactured and normally equipped by LBX Company LLC.
- Lift capacity ratings are based on SAE J/ISO 10567, "Earthmoving Machinery – Hydraulic Excavators – Lift Capacity".

130 X2 Specifications

Bucket Sizes

Bucket Type	SAE Heaped Capacity		Width Outside Lip		Bucket Weight		Number of Teeth	Arm Length	
	(yd ³)	(m ³)	(in)	(mm)	(lbs)	(kg)		8'-2" 2.50 m	9'-10" 3.01 m
STDP	0.50	0.38	24	610	791	359	4	H	M
	0.66	0.50	30	762	889	403	4	M	L
	0.82	0.63	36	914	1007	457	5	L	L
	0.98	0.75	42	1067	1110	503	6	L	N/A
HDP	0.50	0.38	24	610	1064	483	4	H	M
	0.65	0.50	30	762	1183	537	4	M	L
	0.81	0.62	36	914	1331	604	5	L	N/A
	0.97	0.74	42	1067	1450	658	5	N/A	N/A
POWER	0.42	0.32	24	610	1225	556	4	H	H
	0.55	0.42	30	762	1314	596	4	M	L
	0.68	0.52	36	914	1431	649	5	L	L
DITCH	0.86	0.66	60	1524	970	440	0	L	N/A
	0.96	0.73	66	1676	1040	472	0	L	N/A

STDP - Standard duty plate
HDP - Heavy duty plate
XDP - Extreme duty plate
POWER - HDP for use with ESCO multi-pin grabber only

Approval Code For Arm/Bucket Combinations

H..... Heavy material
(up to 3,370 lbs./yd³)
M..... Medium material
(up to 2,700 lbs./yd³)
L..... Light material
(up to 2,020 lbs./yd³)
N/A..... Not applicable

Standard Equipment

- KAB 815 sliding/reclining suspension seat with adjustable 4-inch armrests, lumbar support and retractable seat belt
- Safety glass front window with auto lock, windshield wiper and washer with intermittent speeds, Lexan® side and rear tinted windows
- 4-position tilting consoles with memory position and hydraulic lock-out
- Auto climate control a/c and heat
- AM/FM stereo with mute button, horn, interior light, digital clock, hour meter, floor mat, cup holder, sun shade, storage, LH and RH rear view mirrors
- Travel alarm with cancel switch
- Vandal guarding with bolt-on FOG capability
- EPA Tier III Isuzu diesel engine
- Common rail fuel injection
- Turbocharger with intercooler
- Neutral safety start
- Idle start
- Glow plug pre-heat
- Auto engine warm-up
- Auto idling system
- One-touch idle
- Dual remote fuel filters with water separation
- Double element air filter with in-cab restriction indicator
- External fuel gauge
- Remote, full-flow engine oil filter
- Green plug engine oil drain
- EPF Engine Protection
- Emergency engine stop
- Open-center hydraulic system
- Four selectable work modes including attachment mode
- Auto power boost
- Auto swing priority
- Pre-set auxiliary pump settings - 10
- Auxiliary valve
- Stackable main control valve
- Auxiliary pipe brackets
- Control levers pre-wired for auxiliary
- Control pattern changer
- Long undercarriage
- Sealed and lubricated track chain
- Two-speed with auto shift and straight travel
- Planetary drive
- Spring-applied, hydraulic release brake
- Hydraulic track adjust
- Swivel guard belly pan
- Track guides
- Vandal locks with common key
- 4,825 lb (2,188 kg) counterweight with lifting eyes
- Hand rail
- Tool box
- 15-ft 2-in boom
- EMS (Extended Maintenance System) 1,000 hour service interval throughout entire attachment except bucket
- Attachment cushion valve
- Arm and boom speed assistance
- Arm and boom regeneration
- Arm and boom holding valves
- Cylinder cushion
- Centralized lube bank
- Bucket anti-clatter device
- Illuminated LCD service monitor
- On-board diagnostic system
- Anti-theft device
- 12-volt accessory outlet
- 70-watt work lights on boom and upper

Options

- Arms
 - 8-ft 2-in (2.50 m)
 - 9-ft 10-in (3.01 m)
- Tracks
 - 23.6-in (600 mm) 3-bar grouser
 - 27.5-in (700 mm) 3-bar grouser
 - 19.7-in (500 mm) Rubber
- Hydraulics
 - Single-acting with switch or pedal activation
 - Multi-function with switch or pedal activation and in-cab flow direction control
 - Thumb hydraulics with switch activation
 - 2nd and 3rd auxiliary with pedal activation
- Couplers
 - ESCO multi-pin grabber
- Thumbs
 - Universal rigid
 - Hydraulic non-link
 - Hydraulic non-link for coupler
 - Hydraulic link
 - Hydraulic link for coupler
- Cab lights - exterior
- Air-suspension seat
- Free Swing
- FOG guard
- Front guard - mesh or bars
- HD bucket linkage



EXCAVATORS • FORESTRY
DEMOLITION • MATERIAL HANDLING

LBX Company is the proud maker of quality Link-Belt excavators and is located in Lexington, KY.



"Different by Design"

www.lbxco.com

Litho in USA 2/08 #LBX2133

© LBX and © Link-Belt are registered trademarks. Copyright 2008. All rights reserved. We are constantly improving our products and therefore reserve the right to change designs and specifications.